

Disease situation in Jalozai IDP's camp, Khyber Pakhtunkhwa Week 37 (September 9th to 15th, 2012)

Highlights:

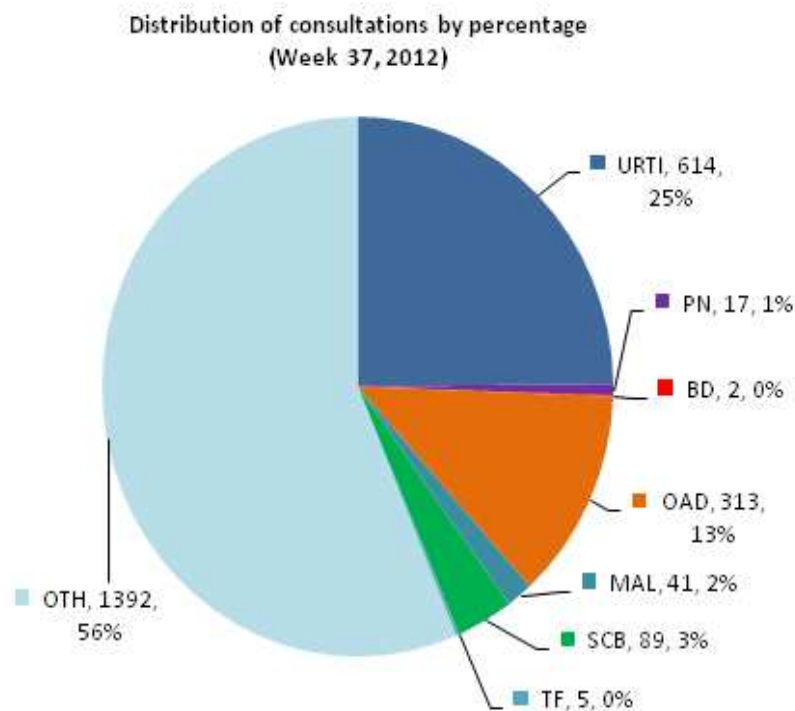
- ❖ **Acute Respiratory tract infections (ARI)** accounted for **26% or 631 cases** of the total patients (2,473 consultations) in all age groups and is showing 6% increase in percentage of ARI patient visits as compared to week 36, 2012.
- ❖ **Other Acute Diarrhea (OAD)** accounted for **13% or 313 cases** of the total patient consultations in all age groups by showing 3% increase in percentage as compared to OAD patient visits in previous week.
- ❖ **Bloody Diarrhea (BD)** shared **0.1% or 2 cases** and also confirmed **Malaria (MAL)** shared **1.2% or 29 cases** of all patient visits in current week.
- ❖ **Skin Infections (SCB)** reported as **3.6% or 89 cases** of the total patient consultations.
- ❖ No alert was reported in this week.



Weekly disease consultations in Jalozai IDPs camp:-

Figure 1: Distribution of consultations by percentage

Table 1: Cases reported from Jalozai IDPs camp



Disease name	Week-37	
	Cases	%
Upper Respiratory Tract Infection (URTI)	614	25
Pneumonia (PN)	17	1
Bloody Diarrhea (BD)	2	0.1
Other Acute Diarrhea (OAD)	313	13
Acute Watery Diarrhea (AWD)	-	-
Confirmed Malaria (MAL)	29	1.2
Scabies (SCB)	89	3.6
Acute Viral Hepatitis (AVH)	-	-
Suspected Measles (Meas)	-	-
Acute Flaccid Paralysis	-	-
Cutaneous Leishmaniasis (CL)	-	-
Suspected Typhoid Fever (TF)	5	0.2
Other diseases (OTH)	1,404	56.3
Total consultations	2,473	

A total **2,473** consultations have been reported through DEWS during week 37 (September 9 to 15, 2012) (table 1). **Five (5) health static units** (Merlin International 4 and CAMP Organization 1) from Jalozai IDPs camp shared daily/weekly disease surveillance data through DEWS.

Major causes for seeking health care percentage trend in Jalozai IDPs camp:-

Figure 2: Weekly disease percentage trend in Jalozai IDPs camp (Week 14 to 37, 2012):

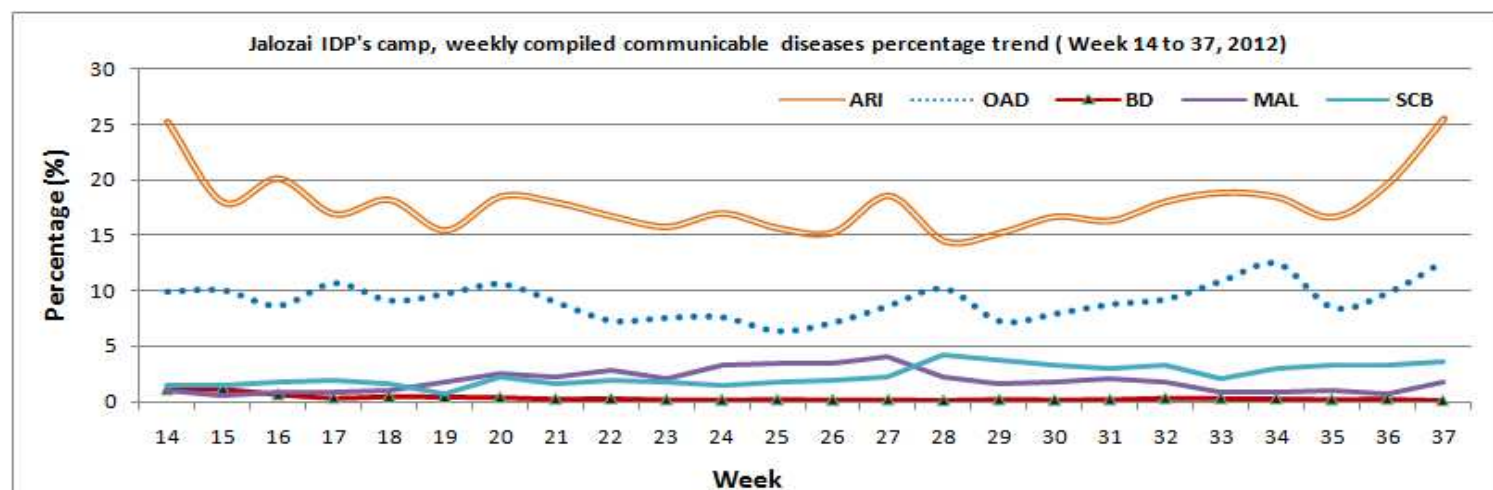


Figure 2 shows percentage trend of major communicable diseases in Jalozai IDPs camp. In this week ARI shared 26% or 631 cases is showing 6% increase and OAD shared 13% or 313 cases is showing 3% increase in percentage.

Total consultations reported from all health units in Jalozai IDPs camp:-

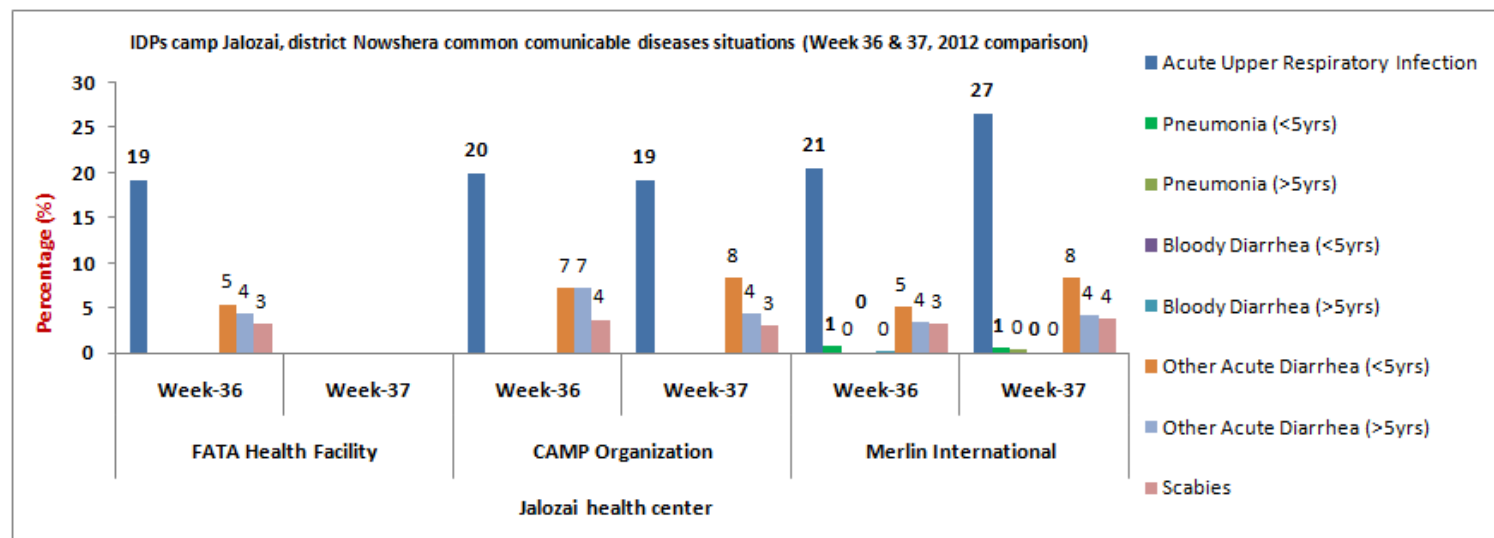
Communicable diseases	CAMP (2 units)				Merlin (4 units)				FATA Health facility (1 unit)			
	Wk-36 (Cases)	%	Wk-37 (Cases)	%	Wk-36	%	Wk-37	%	Wk-36 (Cases)	%	Wk-37 (Cases)	%
Acute Upper Respiratory Infection	160	18	113	19.2	431	20.6	501	26.6	60	14.6	-	-
Pneumonia (<5yrs)	-	-	-	-	16	0.8	10	0.5	-	-	-	-
Pneumonia (>5yrs)	-	-	-	-	3	0.1	7	0.4	-	-	-	-
Bloody Diarrhea (<5yrs)	-	-	-	-	3	0.1	1	0.1	-	-	-	-
Bloody Diarrhea (>5yrs)	-	-	-	-	4	0.2	1	0.1	-	-	-	-
Other Acute Diarrhea (<5yrs)	64	7.2	49	8.3	106	5.1	159	8.4	14	3.4	-	-
Other Acute Diarrhea (>5yrs)	64	7.2	25	4.3	74	3.5	80	4.2	12	3	-	-
Acute Watery Diarrhea (>5yrs)	-	-	-	-	-	-	-	-	-	-	-	-
Confirmed Malaria	13	1.5	15	2.6	9	0.4	14	0.7	-	-	-	-
Suspected Measles (Meas)	-	-	-	-	1	<1	-	-	-	-	-	-
Acute Flaccid Paralysis (AFP)	-	-	-	-	-	-	-	-	-	-	-	-
Scabies (SCB)	33	3.7	18	3	68	3.2	71	4	12	3	-	-
Suspected Typhoid Fever (TF)	1	0.1	5	1	-	-	-	-	-	-	-	-
Acute Viral Hepatitis (AVH)	-	-	-	-	1	<1	-	-	-	-	-	-
Cutaneous Leishmaniasis (CL)	-	-	-	-	1	<1	-	-	-	-	-	-
Other diseases	560	62.6	363	62	1,376	65.7	1,041	55.2	313	76.2	-	-
Total Consultations	895		588		2,093		1,885		411		-	

A comparison of the ARI consultations by health units in Jalozai camp on week 37 (September 9 to 15) shows that high proportion of ARI cases are reported accounted for 26% (URTI 25% and Pneumonia 1%), or 631 cases

followed by Other Acute Diarrhea 13% or 313 cases. Bloody diarrhea comprised 0.1% or 2 cases in consolidated data out of total consultations.

Disease trends by percentage in IDPs Jalojai camp:-

Figure 3: Most common communicable diseases situation in Jalojai IDPs camp as percentage of consultations (Week 36 and 37 comparison)



The above figure 3 shows major health causes percentage situation in Jalojai IDPs camp. During week 37 high percentages of OAD and ARI consultations were reported from Merlin health units as compared to CAMP health facility. In this week OAD 12.7% and ARI 27% were shared from Merlin health facilities, also OAD 12.6% and ARI 19.2% were from CAMP health center. No alert was reported in this week.

Distribution of consultations percentage by age and gender

Figure 4: Age and gender wise segregated disease situation in Jalojai IDPs camp, week 37

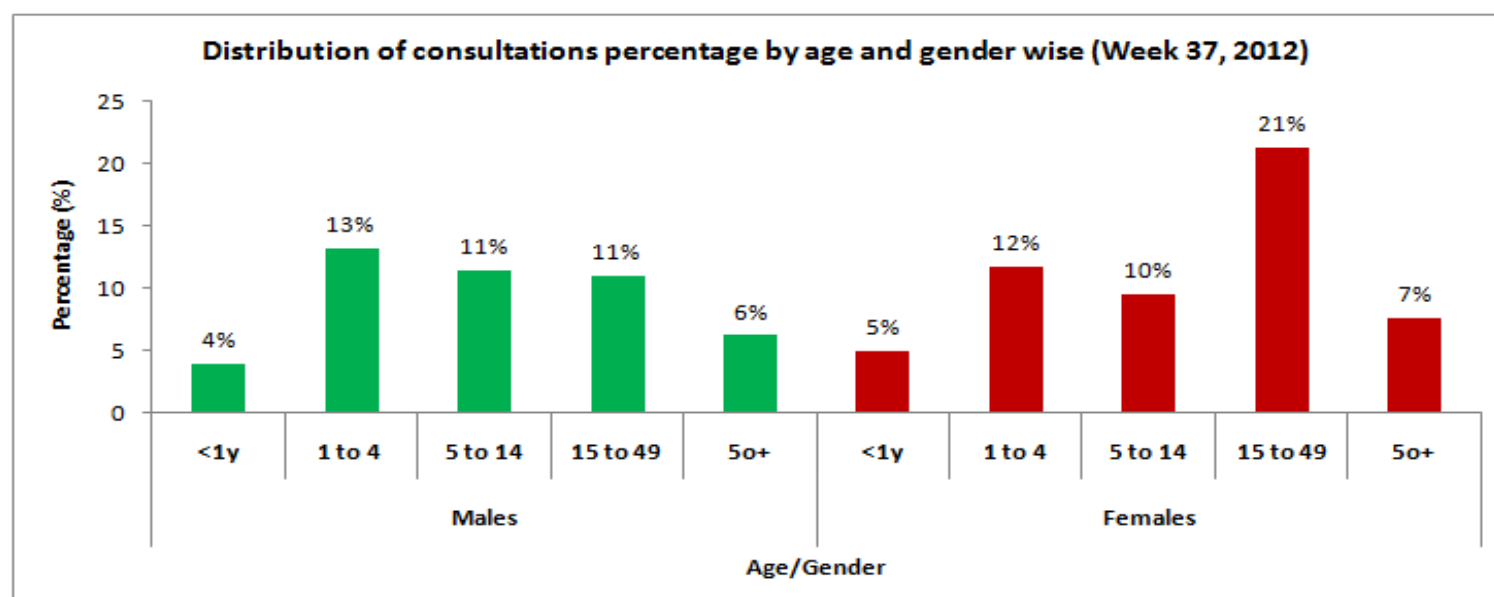


Figure 4 shows comparison of the consultations by gender and age wise in health events in over all diseases, male to female patients' ratio reported was **45% or 1,118 cases** and **55% or 1,355 cases** respectively.

Immunization in Jalozai IDPs camp:-

Table 3 (a & b): Immunization (Jalozai IDP's Camp, Nowshera) from 09th to 15th September, 2012

a) Routine vaccination of Jalozai IDPs camp (Week 37):

EPI	Routine Vaccination										OPV U5 yrs	Women	TT1	TT2	TT3	TT4	TT5	Total
	Children	BCG	Polio			PENTA			Measles	Fully Immunized								
			Birth	1	2	3	1	2										
<1 year	52	44	97	60	58	103	61	62	76	53	69	Pregnant	81	35	10	2	1	3,776
>=1 year	2	0	24	10	8	24	10	8	57	8	2,420	Non-Pregnant (15-49y)	288	31	28	17	3	
Total	54	44	109	61	61	127	71	70	133	61	2,489	-	369	66	38	19	4	

b) Routine vaccination of Jalozai IDPs camp (Consolidated data of all vaccination points in Jalozai IDP camp):

EPI	Routine Vaccination										OPV U5 yrs	Women	TT1	TT2	TT3	TT4	TT5	Total
	Children	BCG	Polio			PENTA			Measles	Fully Immunized								
			Birth	1	2	3	1	2										
<1 year	1,714	1,093	1,953	1,446	1,327	1,992	1,468	1,330	1,638	1,024	2,888	Pregnant	2,066	1,086	147	43	6	97,652
>=1 year	1,337	0	1,362	709	664	1,364	711	665	2,776	588	57,991	Non-Pregnant (15-49y)	6,051	869	870	426	74	
Total	3,051	1,093	3,303	2,146	1,986	3,356	2,179	1,995	4,414	1,612	60,879	-	8,117	1,955	1,017	469	80	

Laboratory test conducted in Jalozai IDPs camp:-

Table 4 (a & b): Laboratory test situation in IDPs Jalozai Camp, Nowshera

a) laboratory test situation data in Jalozai IDPs camp (September 9 to 15, 2012):

Test Name	MP (microscopy)	MP (RDT)*	HB%	HBS	HCV	B.GROUP	B.SUGAR	ESR	LEISHMANIASIS	PREGNENCIES	URINE ALBUMIN	URINE SUGAR	URINE R/E	STOOL R/E	BILIRUBIN	Syphilis	SPUTUM FOR AFB	TOTAL
+Ve	26	15	9	4	2	-	3	-	0	19	0	0	2	0	0	0	0	-
-Ve	84	67	61	66	68	-	63	-	2	26	1	1	3	0	0	69	1	-
Total	110	82	70	70	70	65	66	1	2	45	1	1	5	0	0	69	1	658

* Malaria slides /RDT examined report

Health Centers	Slides/RDT examined	P. Falciparum	P. Vivax	Mixed	Total +ve	Falciparum + Mixed	Slide Positivity Rate (SPR)	Falciparum Rate
Merlin	82	1	14	0	15	1	18.3	6.7
CAMP	28	0	11	0	11	0	39.3	0.0
Total	110	1	25	0	26	1	23.6	3.8

A total of 110 slides were examined for Malaria in this week. Out of total slides examined 26 (23.6%) were positive; out of which P. Falciparum 1 (4%), P. Vivax 25 (96.2%) and Mixed 0 (0%) were shared.

b) laboratory test situation data in Jalozai IDPs camp (Consolidated):

Test Name	MP (microscopy)	MP (RDT)*	HB% ++	HBS	HCV	B.GROUP	B.SUGAR	ESR	LEISHMANIASIS	PREGNENCIES	URINE ALBUMIN	URINE SUGAR	URINE R/E	STOOL R/E	BILIRUBIN	Syphilis	SPUTUM FOR AFB	TOTAL
+Ve	446	504	364	47	39	-	116	-	0	595	79	15	268	73	1	6	0	-
-Ve	785	848	1072	1200	1132	-	907	-	32	462	818	891	759	91	690	1052	2	-
Total	1,231	1,352	1,436	1,247	1,171	1,081	1,023	17	32	1,057	897	906	1,027	164	691	1,058	2	14,392

Nutrition situation in Jalozai IDPs camp:-

Table 5: Nutrition situation in IDPs Jalozai camp Nowshera

➤ Nutrition situation data (Week 37):

CMAM Finding	No of Children screened (6-59 months)		MAM MUAC < 12.5-11.5 cm		SAM MUAC < 11.5cm		Malnutrition at Risk Borderline MUAC ≤13.5-12.5 cm		No Of PLW Screened		Malnourish PLW	
	M	F	M	F	M	F	M	F	P	L	P. MUAC<21	L. MUAC<21
Number of screened	139	124	9	15	1	3	29	36	72	51	6	0
Total	263		24		4		65		123		6	

➤ Nutrition situation data (Consolidated):

CMAM Finding	No of Children screened (6-59 months)		MAM MUAC < 12.5-11.5 cm		SAM MUAC < 11.5cm		Malnutrition at Risk Borderline MUAC ≤13.5-12.5 cm		No Of PLW Screened		Malnourish PLW	
	M	F	M	F	M	F	M	F	P	L	P. MUAC<21	L. MUAC<21
Number of screened	4,527	4,688	380	531	92	126	505	652	1,764	3,201	227	222
Total	9,215		911		218		1,157		4,965		449	

Health Education situation in Jalozai IDPs camp:-

Table 6: Health education situation in IDP's Jalozai camp Nowshera

Data of health education situation (Week 37, 2012)					Data of health education situation (Consolidated)				
Sessions	Number of Sessions	Total participants			Sessions	Number of Sessions	Total participants		
		Males	Females	Total			Males	Females	Total
Total Sessions	610	2,282	2,474	4,756	Total Sessions	11,975	32,661	61,231	93,892

MCH in Jalozai IDPs camp:-

Figure 5: MCH situation in IDP's Jalozai camp Nowshera (September 9 to 15, 2012)

