

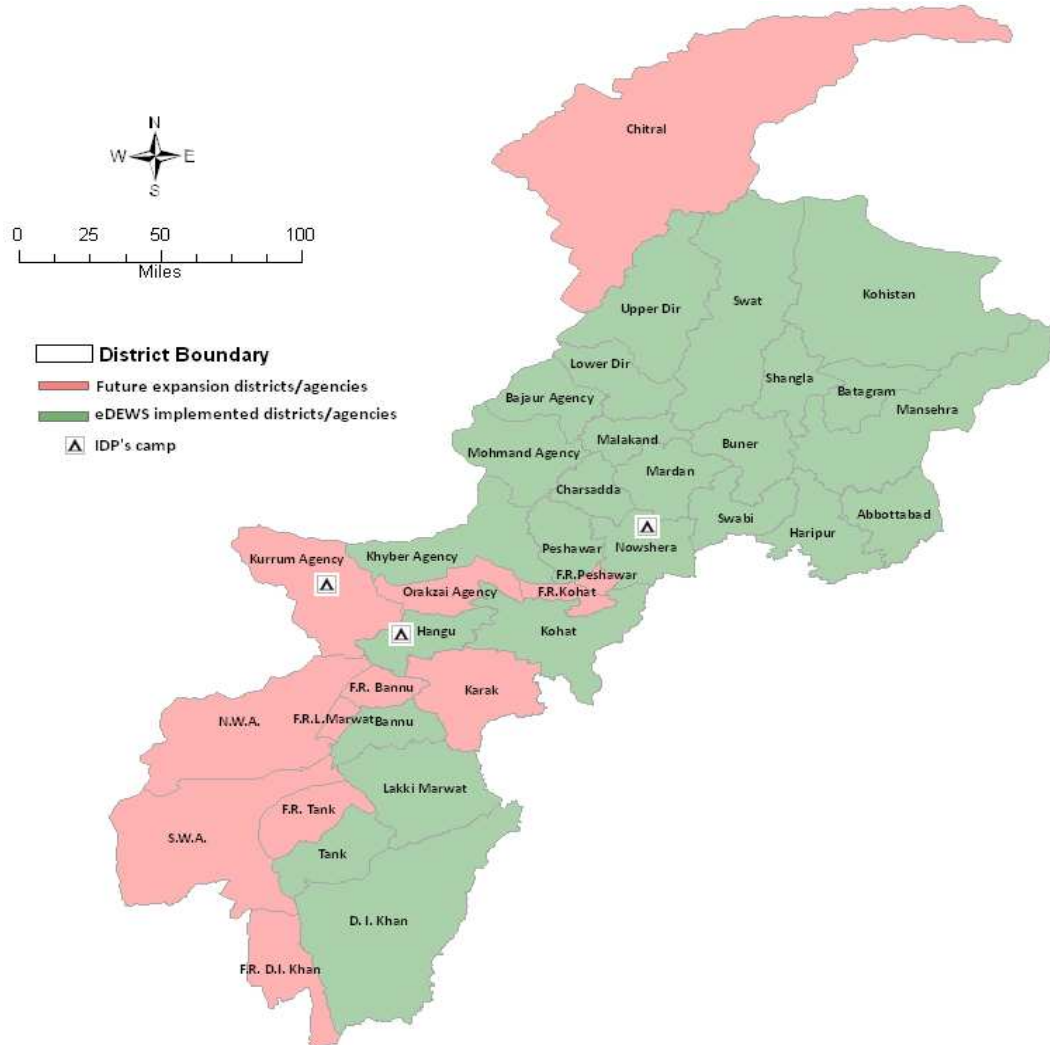


Weekly **Epidemiological** Bulletin

Electronic Disease Early Warning System & Response (eDEWS)

in Khyber Pakhtunkhwa and FATA

Epidemiological Week-12 (18th March to 24th March, 2012)



Priority diseases under surveillance in eDEWS

Respiratory Diseases

Acute (upper) respiratory infections
Pneumonia <5 years
Pneumonia > 5 years
Suspected Diphtheria
Suspected Pertussis

Gastro Intestinal Diseases

Acute Watery Diarrhea <5 year
Acute Watery Diarrhea > 5 year
Bloody Diarrhea <5 years
Bloody Diarrhea > 5 years
Other Acute Diarrhea < 5 years
Other Acute Diarrhea > 5 years
Suspected Enteric/Typhoid Fever

Other Communicable

Suspected Malaria
Suspected Meningitis
Suspected Dengue Fever
Suspected Viral Hemorrhagic Fever
Pyrexia Of Unknown Origin

Vaccine Preventable

Suspected Measles
Suspected Acute Viral Hepatitis
Chronic Viral Hepatitis
Neonatal Tetanus
Acute Flaccid Paralysis

Skin Disease

Scabies
Cutaneous Leishmaniasis

Injuries /Poisoning

Injuries
Snake bite

Other unusual diseases

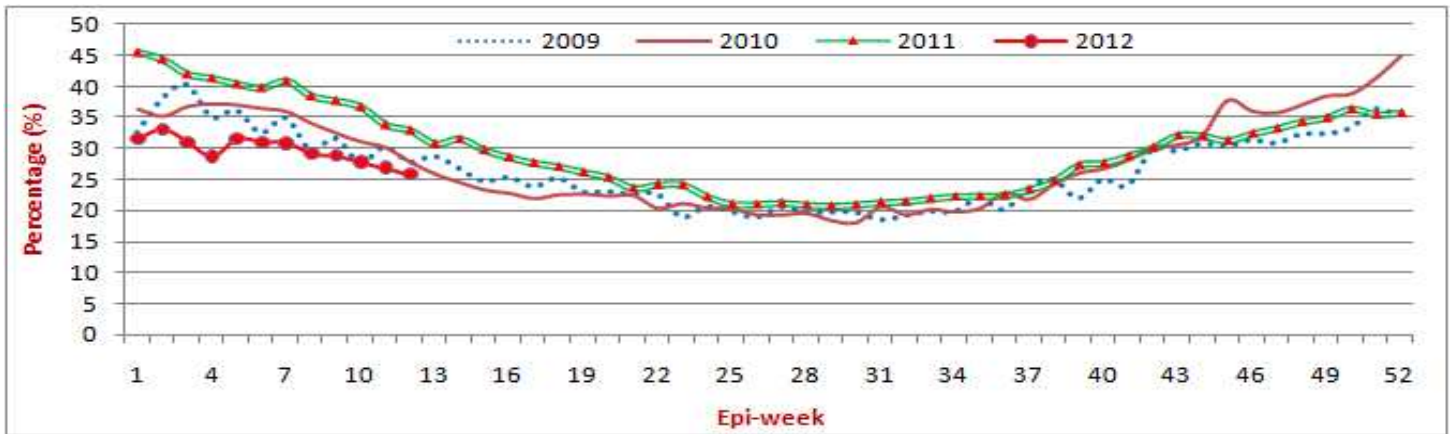
Other unusual diseases

HIGHLIGHTS

- ❖ 18 districts and 3 agencies provided surveillance data to the eDEWS this week from 504 health facilities on time.
- ❖ A total of 125,044 consultations were reported through eDEWS of which 26% or 32,360 cases were Acute Upper Respiratory Infection, is still the highest cause of morbidity of total consultations were showing 1% decrease in percentage as compared to week 11.
- ❖ Other Acute Diarrhoea shared 6% or 6,895 cases of the total consultations showing 1% increase in percentage as compared to previous week.
- ❖ Pyrexia of Unknown Origin accounted for 5% or 6,057 cases out of total consultations.
- ❖ Skin Infection (Skin Inf.) reported at 3% or 3,536 cases and Typhoid Fever comprised only 0.3% or 336 cases out of total consultations.
- ❖ A total of 44 alerts including 3 measles and 1 AWD outbreaks were reported in this week. 41 alerts for suspected Measles while 1 each for Cutaneous Leishmaniasis, Acute Watery Diarrhoea and Enteric Fever.

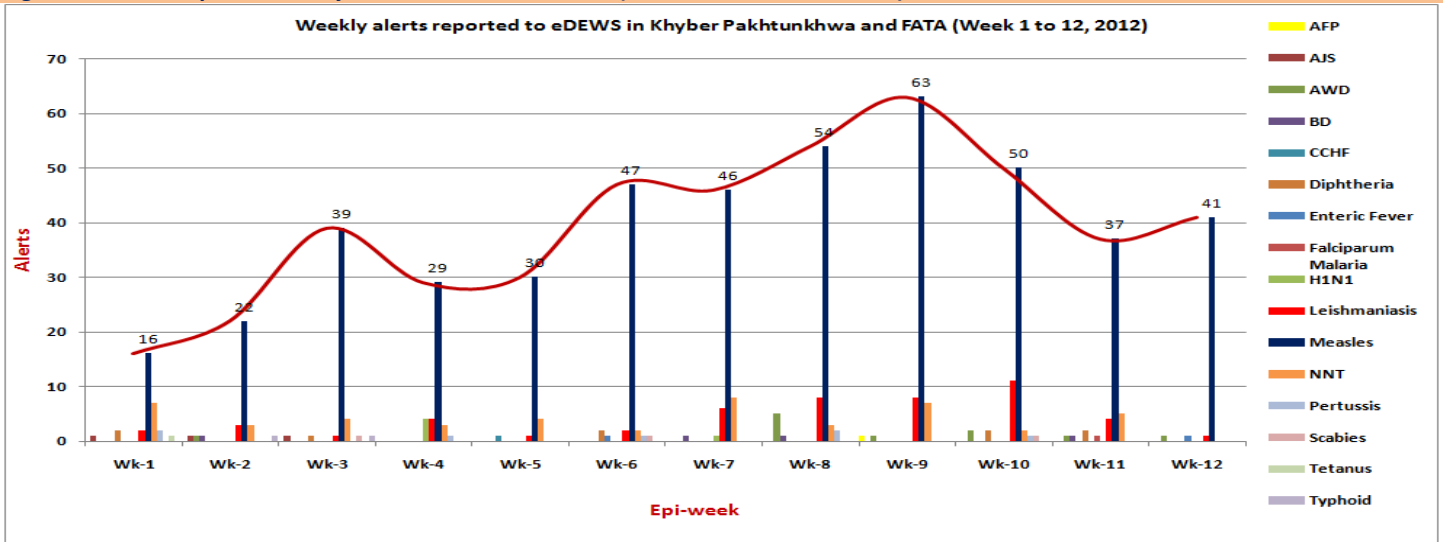
Compiled situation in Khyber Pakhtunkhwa & FATA

Figure-1: Four years trend of Acute Respiratory Tract Infection in Khyber Pakhtunkhwa/FATA (2009, 2010, 2011 and 2012)



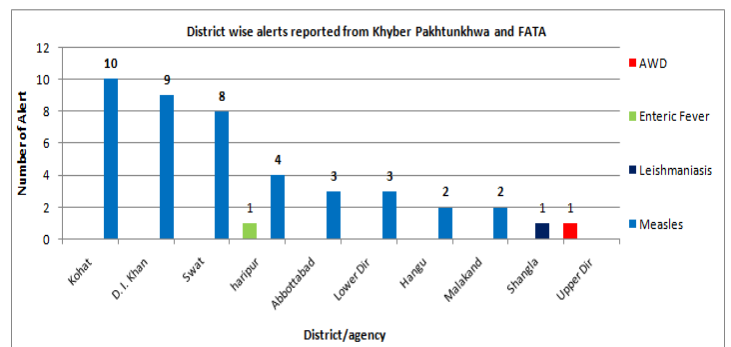
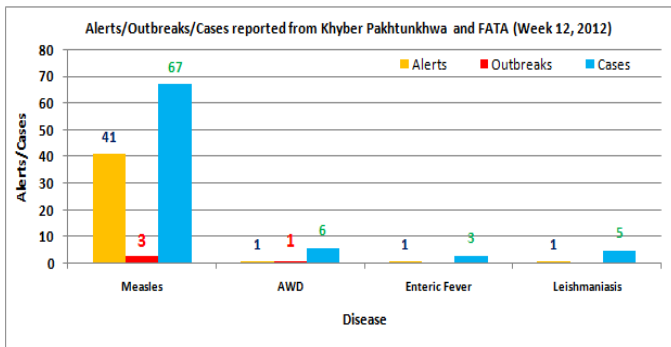
The above graph shows the trend of Acute Respiratory Tract Infection cases out of total consultations reported to DEWS in 2009, 2010, 2011 and 2012 up until now. ARI percentage trend in year 2012 is showing low than previous three years due to intervention of ARI centres in Khyber Pakhtunkhwa. In this week 12, 2012 ARI consultations shows 26% or 32,360 cases of total cases which shows 1% decrease in percentage as compared to week 11.

Figure-2: Alerts reported in Khyber Pakhtunkhwa/FATA (From week 1 to 12, 2012)



The above graph shows the different reported alerts to DEWS from week 1 to 12, 2012. A cumulative figure for the current year is **623 alerts (1,411 cases)** including of **47 outbreaks** were reported. Measles alerts are leading in Khyber Pakhtunkhwa and FATA with **474 alerts (864 cases)** including **34 outbreaks**. Followed by Leishmaniasis **51 alerts (167 cases)** including **3 outbreaks**, Neonatal Tetanus **48 alerts (50 cases)**, AWD **11 alerts (24 cases)** including **1 outbreak**, Diphtheria **9 alerts (9 cases)**, Pertussis **7 alerts (11 cases)**, H1N1 **5 alerts (11 cases)** including **1 outbreak**, Typhoid **4 alerts (45 cases)** including **3 outbreaks**, Bloody Diarrhoea **4 alerts (19 cases)** including **2 outbreaks**, AJS **3 alerts (28 cases)** including **1 outbreak**, Scabies **3 alerts (179 cases)** including **2 outbreaks**, AFP **1 alert (1 case)**, CCHF **1 alert (1 case)**, Tetanus **1 alert (1 case)** and Falciparum Malaria **1 alert (1 case)** were shared.

Figure-3: Number of alerts and alert cases reported in Khyber Pakhtunkhwa/FATA (Week 12, 2012)



The above left side graph shows different alerts and their cases reported in KP/FATA and right side graph shows different alerts

shared by district wise in week 12, 2012. In this week a total of **44** alerts (81 cases) including **3** measles and **1** AWD outbreaks were reported. High number of alerts reported from district Kohat **10** measles alerts (10 cases) were shared, followed by D.I.Khan **9** measles alerts (9 cases), Swat **8** measles alerts (18 cases) including 1 outbreak, Haripur **5** alerts (18 cases) including 1 Enteric Fever alert (3 cases) and 2 measles outbreaks (15 cases), Abbottabad **3** measles alerts (3 cases), Lower Dir **3** measles alerts (4 cases), Hangu measles **2** alerts (5 cases), Malakand **2** measles alerts (3 cases), Shangla **1** Leishmaniasis alert (5 cases) and Upper Dir **1** AWD alert (6 cases which declared outbreak by EDO-H) were reported and responded.

✓ **A total of 4 outbreaks including 3 measles and 1 AWD were shared...**

❖ 2 measles outbreaks from district Haripur...

- An alert of suspected measles case was generated by BHU Sikandarpur. Active surveillance was carried out in the area. 7 more cases were identified who had developed measles. 2 children had active measles. Children were given Vit A. Vaccination status was assessed in the surrounding out of seven houses that were assessed, we found 15 children with no vaccination history of any sort. No BCG scar was seen in any of the children. 3 children were even unvaccinated for polio during the recent SNID round. SO PEI was informed. EPI coordinator and EDO Health were informed. Immediate mop up campaign was launched in the area for measles, Pentavalent and OPV. Blood sample were taken and set to NIH. Follow-up is planned for tomorrow. Health session was conducted on prevention and spread for the affected families
- Other measles outbreak of 5 cases was reported from Khalabat Township, UC Khalabat. An alert of measles cases were generated simultaneously from CD KTS3 and CH Khalabat. 3 suspected cases reported to these health facilities. During the last month 5 cases have been reported from Khalabat fulfilling outbreak criteria. Apart from 2 cases the rest of the cases are Afghan Refugees. During vaccination assessment, 31 houses were assessed in 2 different location 37 children between 9 months and 5 years were assessed. 16 children had measles 1 and 25 children with measles 2 vaccine. 9 children were below 9 months. Other VPD coverage was also satisfactory with clear BCG marks. EPI coordinator and EDO Health were informed of the outbreak. Because of measles outbreak in the Khalabat, Sikandarpur and Afghan Refugee camp, measles campaign is planned in 5 UC of District Haripur adjoining Afghan Refugee camp. Health session was conducted on prevention and spread for the affected families.

- ❖ A total of 11 measles cases were reported in this week. During routine visit to SGTH WHO Swat team found three cases of Suspected Measles belonging to the same village, detailed histories were taken from the patients and Blood Samples were collected and Vitamin A doses provided. Next day WHO team along with a team from DoH went to Sra Sardarey, Active Surveillance was done in the area and eight more cases were found in the village. Outreach vaccination was conducted in the area in which 347 children were vaccinated. Health education session was conducted with the community regarding the importance of routine immunization.

- ❖ 6 suspected AWD cases of the same family resident of Village Jattgram, Tehsil Wari, Dir Upper were brought to RHC Wari on 19th March, 2012. According to the mother of the patients, 14 months old boy developed vomiting. On 18th March 2 more cases developed diarrhoea and on 19th March, 2012 6 AWD cases were brought to RHC Wari for treatment. EHA team collected stools swab from 9 years old on the same day 19th March, 2012 and sent to NIH Islamabad for lab confirmation. The main source of water was unprotected water spring. Stool swab collected and sent to NIH. Line list of suspected cases was maintained and EHA team shared the line list with EDO-H, Incharge RHC Wari and health authorities. EHA-WHO team informed EDO-H, Incharge RHC Wari, district AWD response team and LHW coordinator about AWD Outbreak from village Jattgram, Tehsil Wari, Dir Upper. WHO-EHA team provided 1430 Aqua tabs, 100 ORS, 7 Hygiene kits, 10 jerry cans, 144 soaps and 2 straw filters were provided to the affected families. EHE chlorinated the main source i.e. unprotected spring. Shock chlorination of springs, water storage tanks, utensils and clothes. On job training of community on disinfection of water sources, clothes and utensils and emphasis was given on boiling of drinking water. IEC material provided to the villagers.

Table-1: Leading causes of seeking health care in flood affected districts, compiled weekly reports

Disease name	Week-9	Week-10	Week-11	Week-12	Total Consultations (1 st Jan to 24 th Mar, 2012)
Acute Diarrhoea	7,356 (6%)	7,203 (6%)	7,343 (5%)	6,895 (6%)	70,308 (5.3%)
Bloody Diarrhoea	976 (1%)	1,047 (1%)	963 (1%)	849 (1%)	9,413 (1%)
Suspected Malaria	1,872 (1%)	1,981 (2%)	1,373 (1%)	1,617 (1%)	14,867 (1%)
Skin Diseases	3,745 (3%)	3,748 (3%)	3,818 (3%)	3,536 (3%)	35,004 (3%)
Pyrexia of Unknown Origin	6,791 (5%)	6,269 (5%)	6,907 (5%)	6,057 (5%)	59,727 (5%)
Acute Respiratory Infection	38,299 (29%)	35,525 (28%)	36,036 (27%)	32,360 (26%)	389,014 (29%)
Total Consultations	128,128	132,831	134,363	125,044	1,321,078

The above table shows compiled communicable diseases cases from weekly reports and proportional morbidity through eDEWS reported.

Since January 1, 2012, approximately **1,321,078** patient consultations have been reported to the eDEWS from Khyber Pukhtunkhwa province and Federal Administered Treaty Agency (FATA).

In this week 12, 2012 (18th March to 24th March, 2012) reports were received from 504 health centres and the major causes for seeking health care by the communities in almost all of the regions were diarrhoeal diseases 6,895 cases or 6%, acute respiratory infections 32,360 cases or 26%, skin diseases 3,536 cases or 3% and suspected malaria 1,617 cases or 1%.

Figure-4: Total number of HF# reported and consultations (Week no.1 to 12, 2012)

Figure-5: Leading communicable diseases percentage trend in Khyber Pakhtunkhwa/FATA (Week no.1 to 12, 2012)

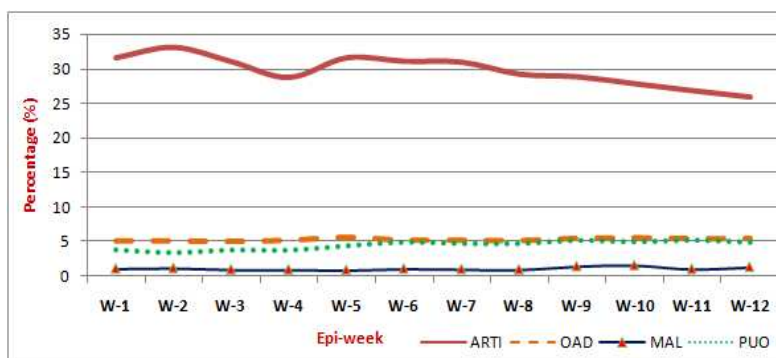
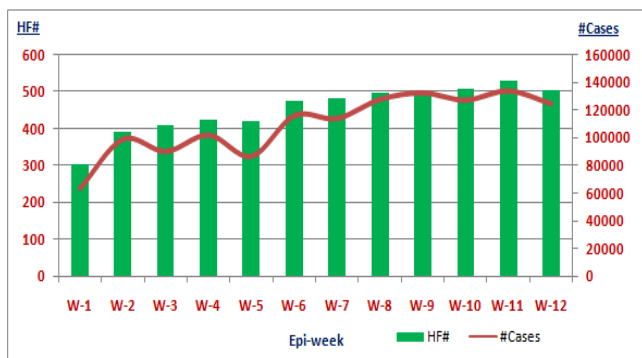


Figure 4 shows the number of health facilities and total number of consultations reported. Decrease in consultations shows low reports were received from districts as compared to last week.

Figure 5 shows the weekly percentage trend of ARI, Other Acute Diarrhoea, suspected Malaria and Pyrexia of Unknown Origin in Khyber Pakhtunkhwa/FATA from week 1 to 12, 2012.

Table-2: Respiratory Diseases situation in Khyber Pakhtunkhwa and FATA

Respiratory Diseases	Week-11	Week-12
Upper Respiratory Infection	33,470	30,069
Pneumonia <5	1,492	1,241
Pneumonia >5	1,074	1,050

Figure-6:

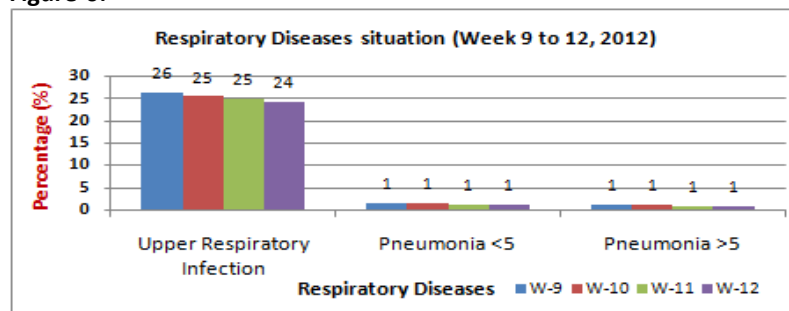


Table 2 shows the last two weeks Acute Respiratory Tract Infection (Upper Respiratory Tract Infection and Lower Respiratory Tract Infection (Pneumonia)) consultations comparison and figure 5 shows the last four weeks percentage situation of ARI.

Table-3: Gastro Intestinal Diseases situation in Khyber Pakhtunkhwa and FATA

Gastro Intestinal Diseases	Week-11	Week-12
Bloody Diarrhea <5	426	340
Bloody Diarrhea >5	537	509
Other Acute Diarrhea <5	3,903	3,700
Other Acute Diarrhea >5	3,440	3,195
Typhoid Fever	346	336

Figure-7:

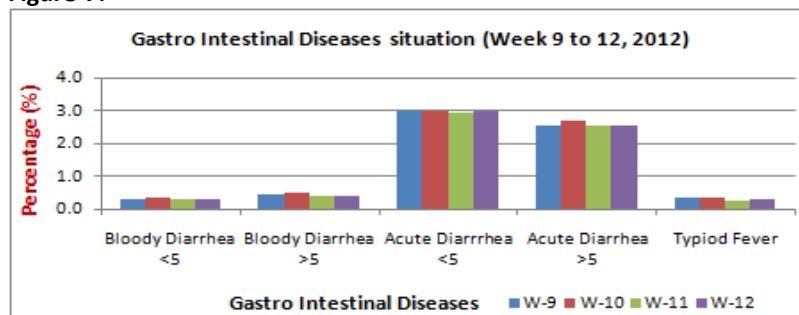


Table 3 shows the last two weeks cases of Gastro Intestinal Diseases and figure 6 shows the percentage of last four weeks.

Province Khyber Pakhtunkhwa:

Figure-8: Distribution of consultations by communicable diseases

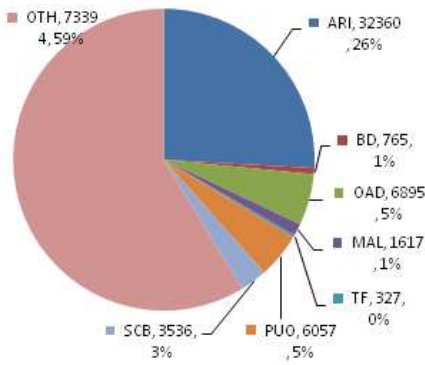
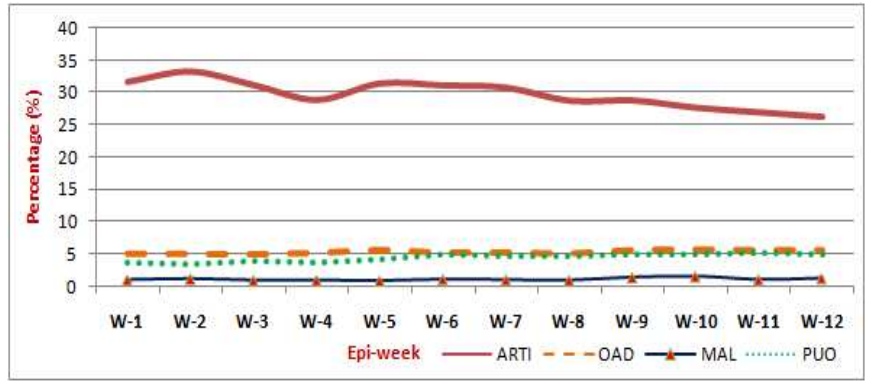
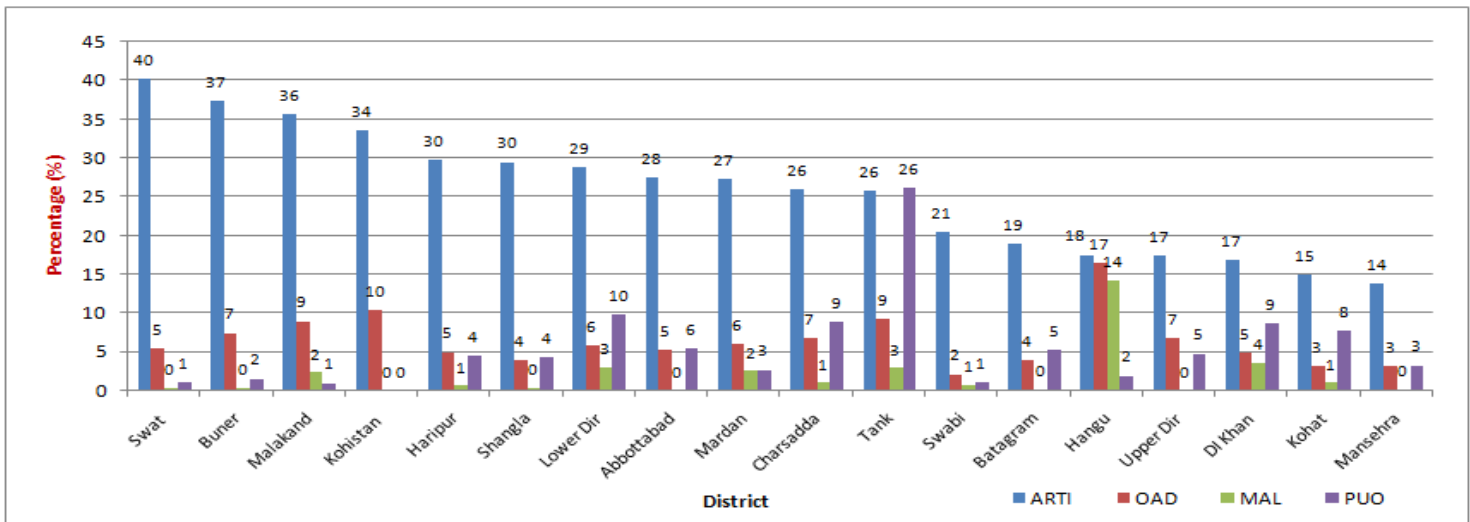


Figure-9: Weekly diseases (ARI, OAD, MAL and PUO) percentage trend



- Figure 8 shows distribution of consultations by communicable diseases in week 12, 2012 and figure 9 shows weekly percentage trend of ARI, OAD, MAL and PUO from week 1 to 12, 2012.
- This week 18 districts reported to eDEWS from 464 health facilities with a total of 115,324 patients' consultations.
- Acute Respiratory Tract Infection 30,163 cases reported were showing 1% decrease in percentage as compared to week 11 patients' visits and accounted for 26% of the total consultations.
- Other Acute Diarrhea cases 6,332 or 5% showing no change in percentage as compared to previous week and suspected Malaria 1,363 cases or 1% were reported.
- While Pyrexia of Unknown Origin cases 5,654 or 5% showing no change in percentage as compared to previous week 11.
- Typhoid Fever (TF) cases 327 (<1%) and Scabies cases 3,267 or 3% were reported.

Figure-10: ARI, OAD, MAL and PUO percentage situation of Khyber Pakhtunkhwa district wise in week 12, 2012



The above figure shows ARI, OAD, MAL and PUO percentage situation district wise in week 12, 2012. During this week high percentage of ARI consultations were reported from district Swat 40% (5,967 cases), followed by district Buner 37% (2,338 cases), Malakand 36% (2,147 cases), Kohistan 34% (778 cases), Haripur 30% (2,782 cases) and Shangla 30% (1,537 cases). Similarly high percentage of OAD cases were reported from district Hangu 17% (306 cases), Kohistan 10% (241 cases), Tank 9% (113 cases) and Malakand 9% (542 cases). High percentages of suspected Malaria were reported from district Hangu 14% (264 cases), D.I. Khan 4% (267 cases), Lower Dir 3% (240 cases) and Tank 3% (35 cases). High percentage of Pyrexia of Unknown Origin (PUO) consultations were reported from district Tank 26% (322 cases), Lower Dir 10% (808 cases), Charsadda 9% (1,019 cases), D.I. Khan 8% (663 cases), Kohat 8% (641 cases) and Abottabad 6% (196 cases).

Current week's Alert/Outbreak in Khyber Pakhtunkhwa:

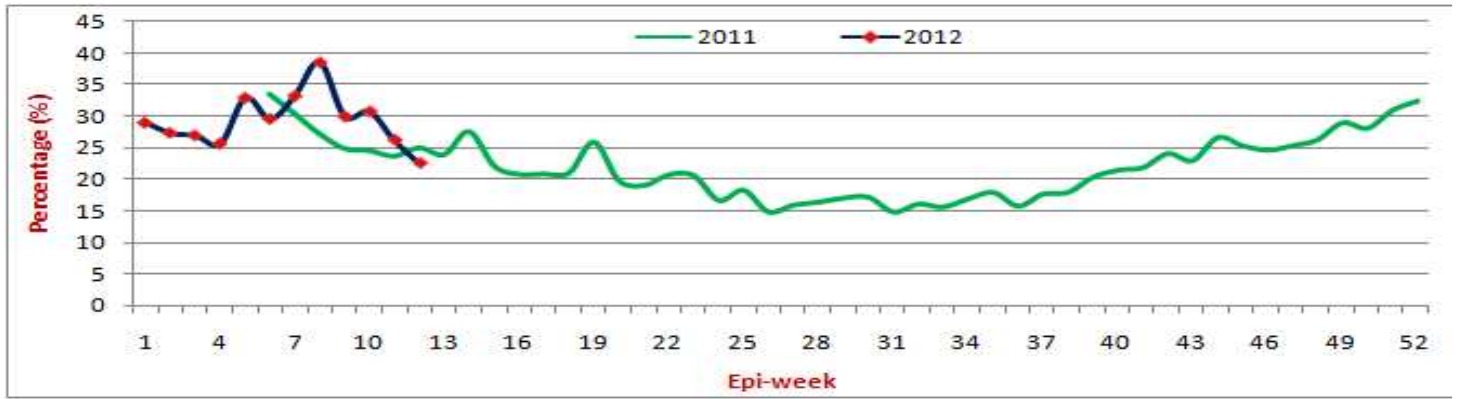
❖ A total of 44 alerts including 3 measles and 1 AWD outbreaks were reported in this week. 41 alerts for suspected Measles while 1 each for Cutaneous Leishmaniasis, Acute Watery Diarrhoea and Enteric Fever.

S. No.	Date Investigated	Suspected Disease	District	Location	<5 M	>5 M	<5 F	>5 F	Sample	Positive	Cases	Death
1	19-Mar-12	Measles	Abbottabad	Harno, Sarpana	1	0	0	0	1	r	1	0
2	19-Mar-12	Measles	Abbottabad	Kasel, Banda Atti Khan	1	0	0	0	1	r	1	0
3	20-Mar-12	Measles	Abbottabad	Banda Sahib Khan, Havallian	1	0	0	0	1	r	1	0
4	19-Mar-12	Measles	D. I. Khan	Mallana, Multan Road	1	0	0	0	1	r	1	0
5	19-Mar-12	Measles	D. I. Khan	Pusha Pul, Bannu Road	1	0	0	0	1	r	1	0
6	19-Mar-12	Measles	D. I. Khan	Village Roda, Tehsil Kulachi	0	1	0	0	1	r	1	0
7	19-Mar-12	Measles	D. I. Khan	Awan Abad, Bannu, Road	0	0	1	0	1	r	1	0
8	19-Mar-12	Measles	D. I. Khan	Village Dahotar, Chashma Road,	0	1	0	0	1	r	1	0
9	20-Mar-12	Measles	D. I. Khan	Eid Gah Road	1	0	0	0	1	r	1	0
10	20-Mar-12	Measles	D. I. Khan	Awan Abad, Bannu, Road	1	0	0	0	1	r	1	0
11	20-Mar-12	Measles	D. I. Khan	Kulachi	1	0	0	0	1	r	1	0
12	22-Mar-12	Measles	D. I. Khan	Village Chooraa, UC Bilot, Tehsil Pahar pur	0	0	1	0	1	r	1	0
13	19-Mar-12	Measles	Haripur	Makhan Colony UC Sikandarpur	1	2	2	3	2	r	8	0
14	19-Mar-12	Measles	Haripur	Khalabut Township UC Khalabut	2	1	1	1	1	r	5	0
15	20-Mar-12	Measles	Haripur	Noor Colony Haripur	0	1	0	0	1	r	1	0
16	20-Mar-12	Measles	Haripur	Muhallah Eid Gah	1	0	0	0	1	r	1	0
17	19-Mar-12	Enteric Fever	Haripur	Khalabut Township UC Khalabut	0	1	0	2	2	r	3	0
18	19-Mar-12	Measles	Lower Dir	Village Qalagai, UC Koto Tehsil Balmabat	0	1	1	0	1	r	2	0
29	20-Mar-12	Measles	Lower Dir	Village Ranredaly, UC Miskanay, Tehsil Samar Bagh	1	0	0	0	1	r	1	0
20	20-Mar-12	Measles	Malakand	Alladand	2	0	0	0	1	r	2	0
21	21-Mar-12	Measles	Malakand	Alladand	0	0	1	0	1	r	1	0
22	21-Mar-12	Measles	Lower Dir	Katyandi	1	0	0	0	1	r	1	0
23	20-Mar-12	Leishmaniasis	Shangla	Village Munz Kele Shokar/Martung	3	2	0	0	0	r	5	0
24	18-Mar-12	Measles	Swat	Village Sar Sardarey Bar Jabar, UC Aka Maruf Bamikhel, Tehsil Babuzai	8	1	0	1	3	r	11	1
25	19-Mar-12	Measles	Swat	Village and UC Odigram, Tehsil Babuzai	1	0	0	0	1	r	1	0

26	19-Mar-12	Measles	Swat	Village and UC Manglore, Tehsil Babuzai	1	0	0	0	1	r	1	0
27	19-Mar-12	Measles	Swat	Village Kadow khas shengrai, UC Aka Maruf Mabikel, Tehsil Babuzai	1	0	0	0	1	r	1	0
28	21-Mar-12	Measles	Swat	Village Dangram, UC Sangota, Tehsil Babuzai	1	0	0	0	1	r	1	0
29	21-Mar-12	Measles	Swat	Village Magowar murad Abad, UC Aka Maruf Bami khel, Tehsil Babuzai	1	0	0	0	1	r	1	0
30	21-Mar-12	Measles	Swat	Village Odigarm Hafiz Abad, UC Odigram, Tehsil Babuzai	0	1	0	0	1	r	1	0
31	22-Mar-12	Measles	Swat	Village Sher Atrah, UC Islampur, Tehsil Babuzai	1	0	0	0	1	r	1	0
32	19-Mar-12	AWD	Upper Dir	Village Jattgram, UC Nihagdarra, Tehsil Wari	2	2	1	1	1	r	6	0
33	19-Mar-12	Measles	Kohat	UC Mohammad Zai	0	0	1	0	1	r	1	0
34	19-Mar-12	Measles	Kohat	UC Jarma	0	0	0	1	1	r	1	0
35	19-Mar-12	Measles	Kohat	UC Sheikhaan	0	0	1	0	1	r	1	0
36	20-Mar-12	Measles	Kohat	UC Mohammad Zai	0	0	1	0	1	r	1	0
37	20-Mar-12	Measles	Kohat	UC Mohammad Zai	1	0	0	0	1	r	1	0
38	20-Mar-12	Measles	Kohat	UC Sheikhaan	1	0	0	0	1	r	1	0
39	20-Mar-12	Measles	Kohat	UC jarma	1	0	0	0	1	r	1	0
40	23-Mar-12	Measles	Kohat	Village Dawood Khel	0	1	0	0	1	r	1	0
41	23-Mar-12	Measles	Kohat	College town area	0	0	1	0	1	r	1	0
42	23-Mar-12	Measles	Kohat	UC Sheikhaan	0	0	0	1	1	r	1	0
43	24-Mar-12	Measles	Hangu	Jawar Ghundi, UC Doaba	0	0	1	0	1	r	1	0
44	24-Mar-12	Measles	Hangu	UC Togh Saray, IDP Camp	0	1	1	2	1	r	4	0

Federal Administrated Tribal Agency (FATA):

Figure-11: Two years trend of ARI in FATA



DEWS was started in FATA three agencies (Bajaur, Khyber, Mohmand) since February, 2011 during FATA IDPs crisis. Figure 11 shows 2 years weekly percentage trend of Acute Respiratory Tract Infection (ARI) percentage trend. In week 12, 2012 ARI 2,197 cases or 23% were shared showing 3% decrease as compared to previous week. Year 2012 ARI percentage trend is showing decrease since week 10, 2012.

Figure-12: Distribution of consultations by communicable diseases

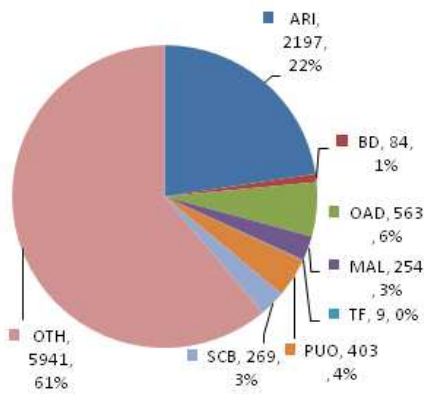
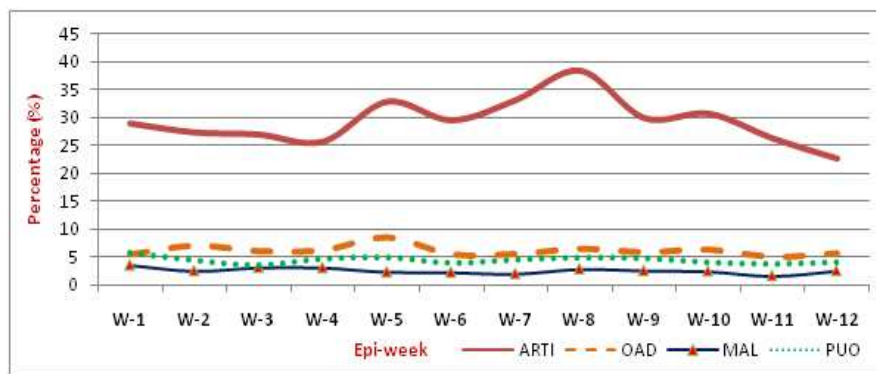
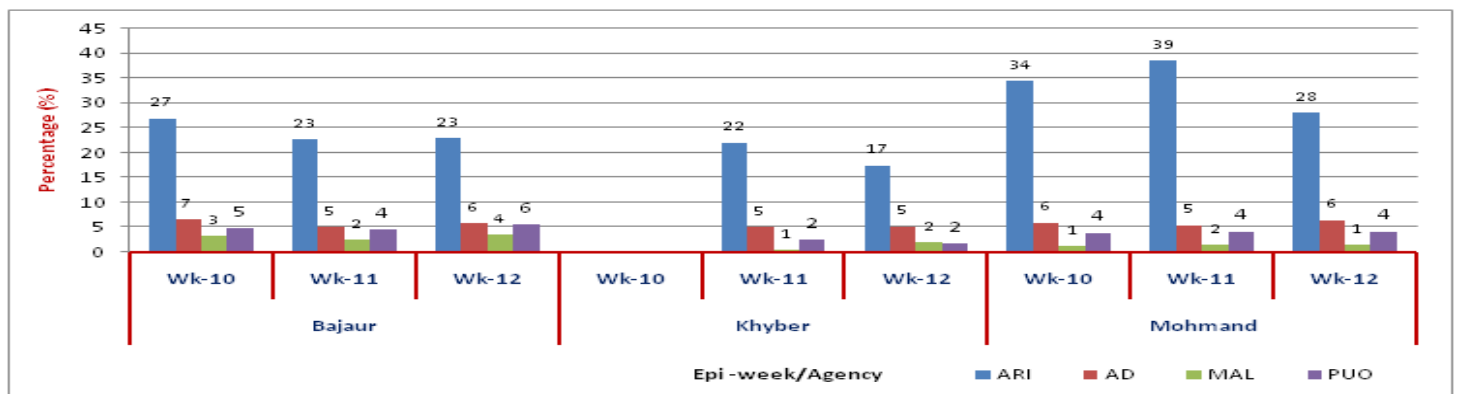


Figure-13: Weekly diseases (ARTI, OAD, MAL and PUO) percentage trend



- Figure 12 shows distribution of consultations by communicable diseases in week 12, 2012 and figure 13 shows weekly percentage trend of ARI, OAD, MAL and PUO from week 1 to 12, 2012.
- This week, 40 health facilities reported from 3 agencies to eDEWS with a total of 9,720 patients' consultations.
- Acute Respiratory Tract Infection (ARI) 2,197 cases reported were showing 3% decrease in percentage as compared to week 11 patients' visits and accounted for 23% of the total consultations.
- Other Acute Diarrhea (OAD) 563 cases or 6% were showing 1% increase in percentage as compared to week 11 and suspected Malaria (Mal) 254 cases or 3% were shared.
- While Pyrexia of Unknown Origin (PUO) shared 403 cases or 4% which shows no change in percentage as compared to previous two weeks, Typhoid Fever (TF) 9 cases or <1% and Scabies 269 cases or 3% were reported.

Figure-14: ARI,OAD, MAL and PUO percentage situation of Federal Administered Treaty Agency (FATA) in last four weeks



The above figure 14 shows ARI, OAD, MAL and PUO percentage situation in FATA three agencies. During week 12, 2012 high percentage of ARI consultations were reported as compared to other diseases. In this week high percentage of ARI consultations were reported from Mohmand agency. In this week ARI 28% or 642 cases, 23% or 1,069 cases and 17% or 486 cases were shared respectively from Mohmand, Bajaur and Khyber agencies. Similarly Other Acute Diarrhoea 6% or 270 cases, 6% or 148 cases and 5% or 145 cases respectively from Bajaur, Mohmand and Khyber agencies. Pyrexia Unknown Origin (PUO) high percentage were reported 6% or 260 cases and suspected Malaria 4% or 165 cases from Bajaur agency as compared to other agencies.

Current week's Alert/Outbreak in FATA:

No alert case was reported in this week

S. No.	Date Investigated	Suspected Disease	Agency	Location	<5 M	>5 M	<5 F	>5 F	Sample	Positive	Cases	Death
1												

Figure-15: Total number of alerts/outbreak situation in Khyber Pakhtunkhwa & FATA through eDEWS System (Week 12, 2012)

