

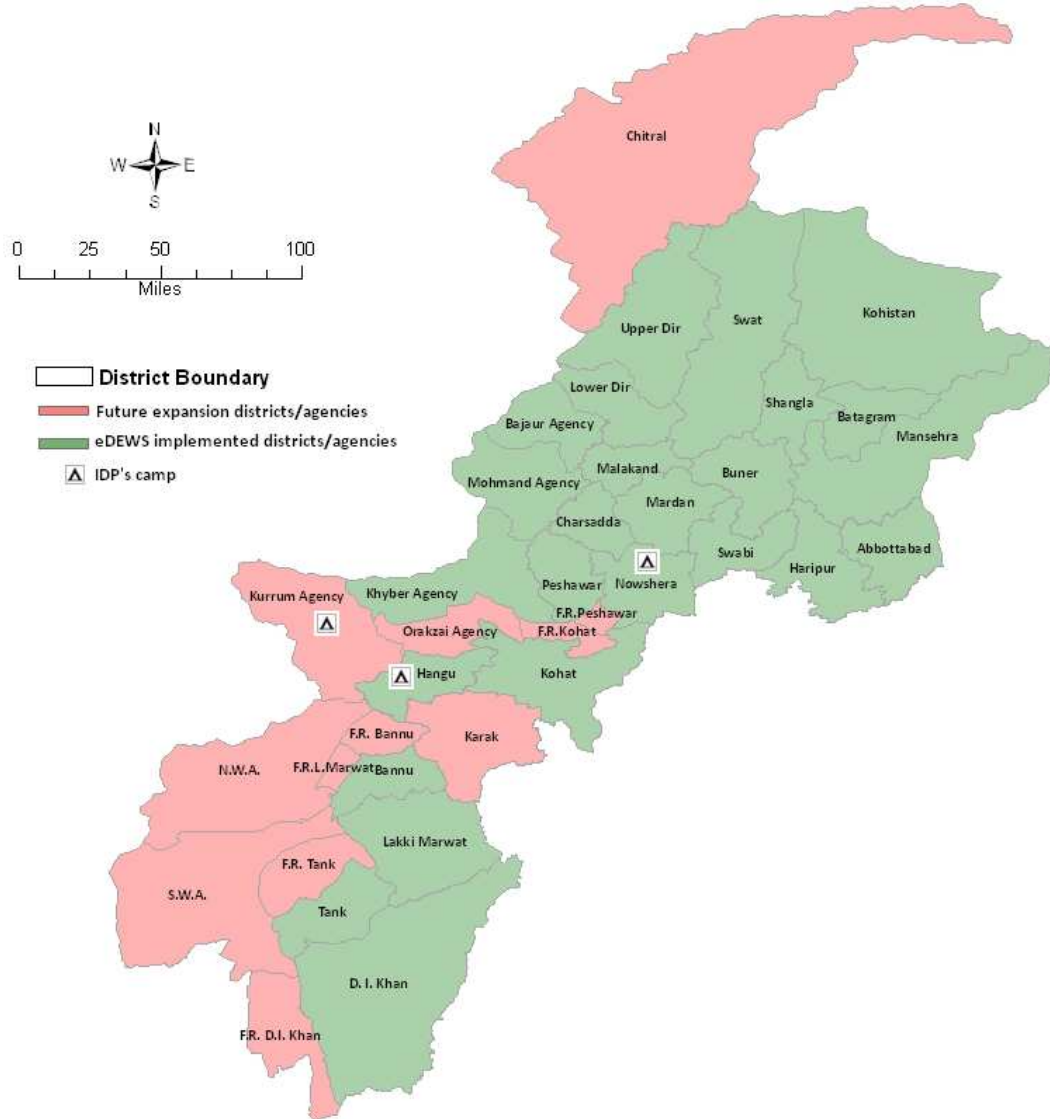


# Weekly Epidemiological Bulletin

## Electronic Disease Early Warning System & Response (eDEWS)

in Khyber Pakhtunkhwa and FATA

Epidemiological Week no. 43 (October 21 to 27, 2012)



### Priority diseases under surveillance in eDEWS

#### Respiratory Diseases

Acute (upper) respiratory infections

Pneumonia <5 years

Pneumonia > 5 years

Suspected Diphtheria

Suspected Pertussis

#### Gastro Intestinal Diseases

Acute Watery Diarrhea <5 year

Acute Watery Diarrhea > 5 year

Bloody Diarrhea <5 years

Bloody Diarrhea > 5 years

Other Acute Diarrhea < 5 years

Other Acute Diarrhea > 5 years

Suspected Enteric/Typhoid Fever

#### Other Communicable

Suspected Malaria

Suspected Meningitis

Suspected Dengue Fever

Suspected Viral Hemorrhagic Fever

Pyrexia Of Unknown Origin

#### Vaccine Preventable

Suspected Measles

Suspected Acute Viral Hepatitis

Chronic Viral Hepatitis

Neonatal Tetanus

Acute Flaccid Paralysis

#### Skin Disease

Scabies

Cutaneous Leishmaniasis

#### Injuries /Poisoning

Injuries

Snake bite

#### Other unusual diseases

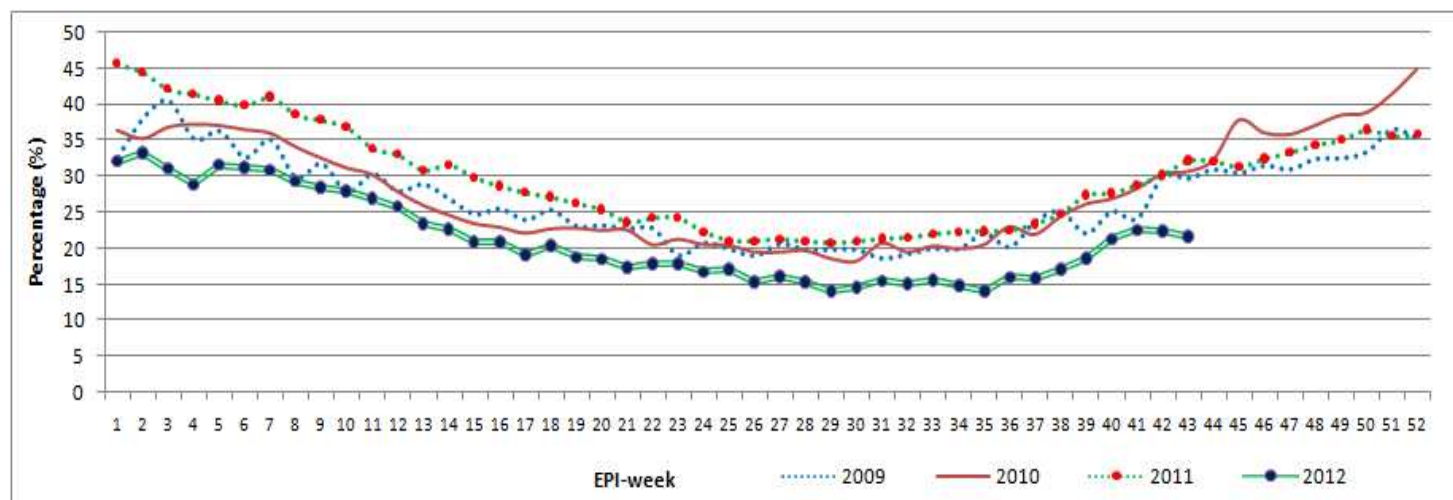
Other unusual diseases

## HIGHLIGHTS

- **17 districts and 2 agencies** provided surveillance data to the eDEWS this week from **464** health facilities.
- A total of **110,838 consultations** were reported through eDEWS of which 21.6% or 23,986 cases were Acute Upper Respiratory Infection, is still the highest cause of morbidity of total consultations were showing 0.8% decrease in percentage as compared to week 42.
- Other Acute Diarrhoea shared 8% or 8,898 cases of the total consultations showing 0.1% decrease in percentage as compared to previous week.
- Pyrexia of Unknown Origin accounted for 5% or 5,164 cases out of total consultations.
- Skin Infection (Skin Inf.) reported at 2.2% or 2,452 cases and suspected Typhoid Fever comprised only 0.2% or 267 cases out of total consultations.
- A total of **35 alerts** including **1** for Cutaneous Leishmaniasis (CL) outbreak were received. 20 alerts for suspected Measles, 7 for CL, 3 for Dengue Fever (DF), 2 for Diphtheria while 1 each for Acute Watery Diarrhoea (AWD), Bloody Diarrhoea (BD) and Pertussis were shared and responded.

## Compiled situation in Khyber Pakhtunkhwa & FATA

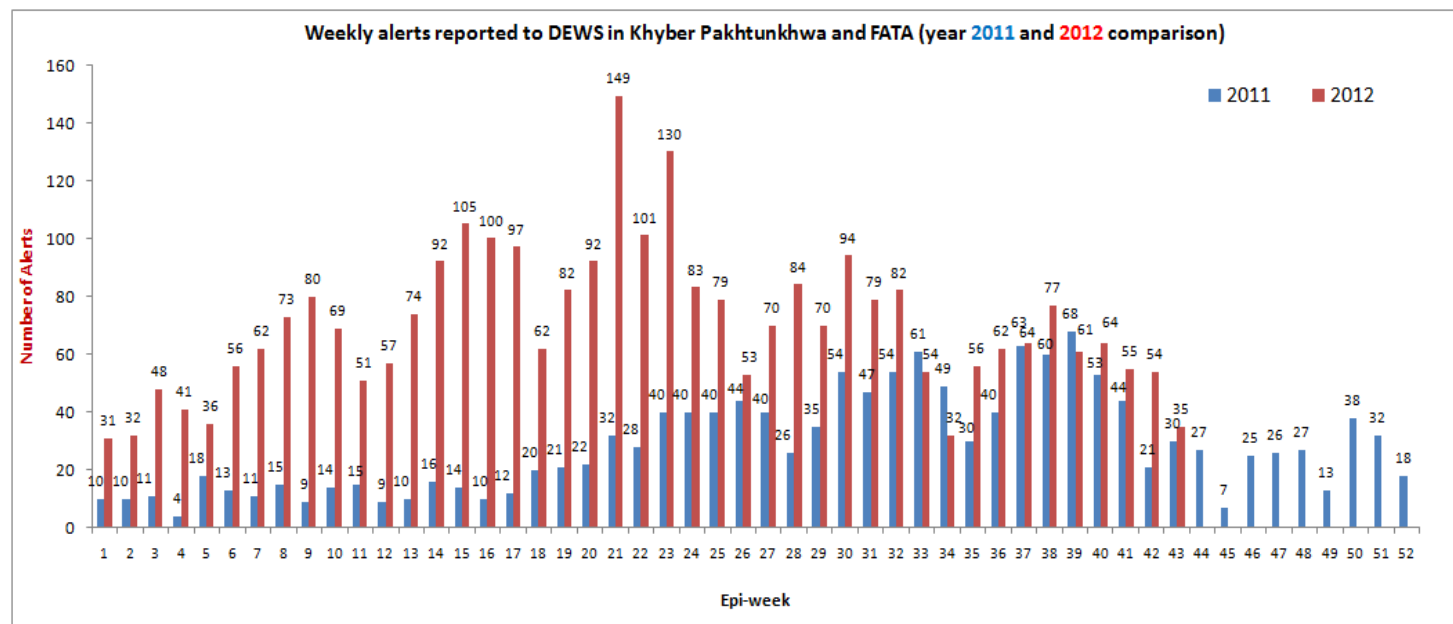
Figure-1: Four years trend of Acute Respiratory Infection (ARI) in Khyber Pakhtunkhwa/FATA (2009, 2010, 2011 and 2012)



The above graph shows the trend of Acute Respiratory Infection (ARI) cases out of total consultations reported to DEWS in 2009, 2010, 2011 and 2012 up until now. In this week 43, 2012 ARI consultations reported 21.6% or 23,986 cases of total cases and show 0.8% decrease in percentage as compared to week 42.

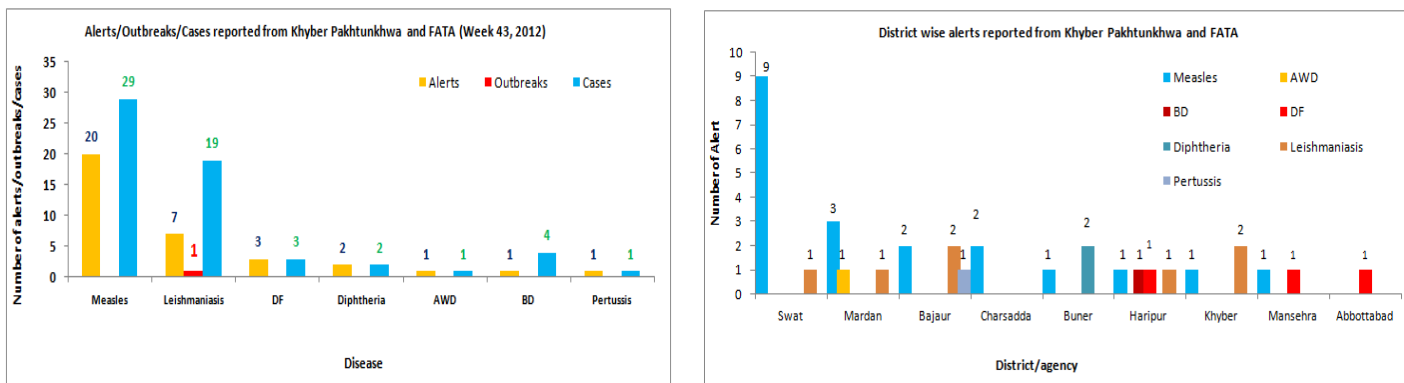
During this week high percentage of ARI consultations were reported from district Peshawar 33% followed by district Dir Lower 32.5%, Nowshera 27%, Haripur 27%, Buner 27%, Kohat 26%, Malakand 25%, Swat 25%, Hangu 25%, Shangla 23%, Mardan 23% and Charsadda 21%.

Figure-2: Alerts reported in Khyber Pakhtunkhwa/FATA (year 2011 and 2012 comparison)



The above graph shows the different reported alerts to DEWS from year 2011 and 2012. High number of alerts reported in year 2012 due to more active surveillance and response. A cumulative figure for the current year is **3,033** alerts (**7,579** cases) including of **246** outbreaks were reported. Measles alerts are leading in Khyber Pakhtunkhwa and FATA with **2,226** alerts (**3,844** cases) including **147** outbreaks. Followed by *C. Leishmaniasis* **329** alerts (**1,114** cases) including **35** outbreaks, Neonatal Tetanus **118** alerts (**120** cases), AWD **115** alerts (**813** cases) including **15** outbreaks, Typhoid Fever **47** alerts (**158** cases) including **12** outbreaks, Dengue Fever **31** alerts (**32** cases) including **4** outbreak, Diphtheria **28** alerts (**28** cases) including **1** outbreak, Bloody diarrhoea **27** alerts (**161** cases) including **6** outbreaks, Pertussis **19** alerts (**35** cases) including **2** outbreaks, Acute Viral Hepatitis **17** alerts (**195** cases) including **8** outbreaks, suspected AFP **15** alerts (**15** cases), Dog Bite **9** alerts (**9** cases), Scabies **7** alerts (**320** cases) including **5** outbreaks, H1N1 **7** alerts (**20** cases) including **2** outbreaks, Falciparum Malaria **6** alerts (**10** cases) including **3** outbreaks, CCHF **6** alerts (**8** cases) including **1** outbreak, Tetanus **6** alerts (**6** cases), Other Acute Diarrhoea **4** alerts (**194** cases) including **1** outbreak, Chickenpox **3** alerts (**8** cases), Viral Hemorrhagic Fever **3** alerts (**3** cases), Mumps **2** alert (**3** cases), Acute Respiratory Infection **1** outbreak (283 cases), Dengue Fever/Malaria **1** outbreak (158 cases), Dengue Hemorrhagic Fever **1** alert (**4** cases), Pneumonia **1** alert (**26** cases), Rabies **1** alerts (**9** cases) including **1** outbreak, suspected DHF/CCHF **1** alert (**1** case), Unexplained Fever **1** alert (**1** case), Viral Hemorrhagic Fever **1** alert (**1** case) and Viral Encephalitis **1** alert (**1** case) were shared.

**Figure-3: Number of alerts and alert cases reported in Khyber Pakhtunkhwa/FATA (Week 43, 2012)**



The above left side graph shows different alerts and their cases reported in KP/FATA and right side graph shows different alerts shared by district wise in week 43, 2012. In this week a total of 35 alerts (59 cases) including 1 outbreak were reported and responded.

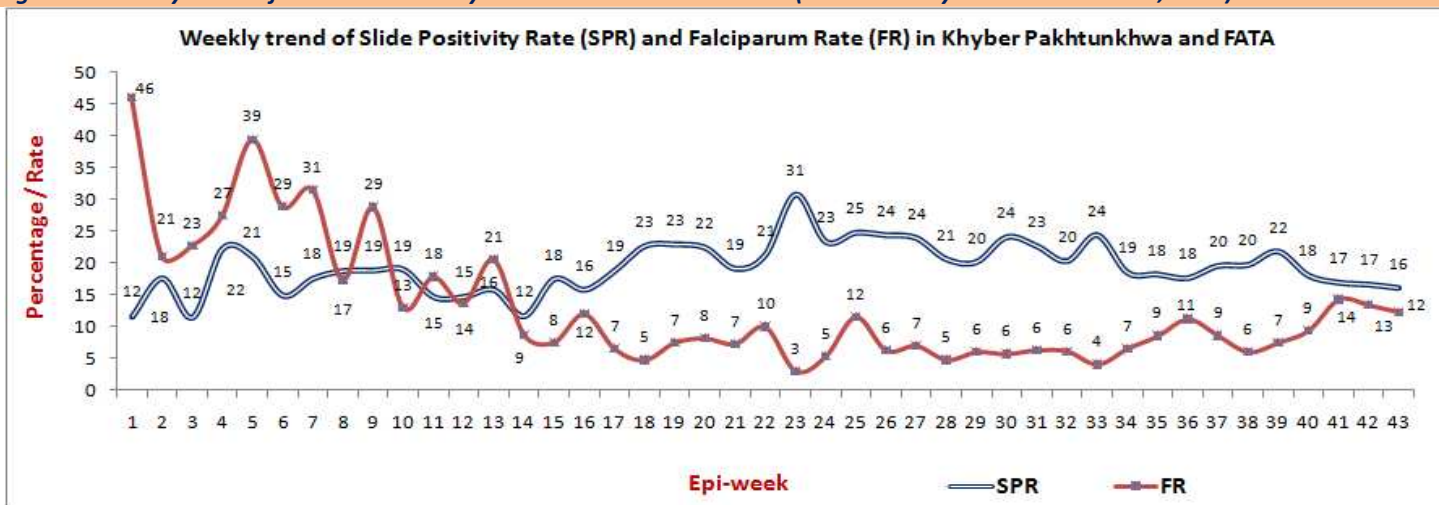
- Highest number of alerts reported from Swat 10 alerts including 9 for suspected Measles and 1 for CL followed by
- Bajaur 5 alerts including 2 each for CL and suspected Measles and 1 for Pertussis
- Mardan 5 alerts including 3 for suspected Measles while 1 each for AWD and CL
- Haripur 4 alerts including 1 each for suspected Measles, BD, CL and DF
- Khyber 3 alerts including 2 for CL and 1 for suspected Measles
- Charsadda 2 for suspected Measles
- Mansehra 2 alerts including 1 each for DF and suspected Measles
- Abottabad 1 for DF

❖ **1 Cutaneous Leishmanias (CL) was reported in this week.**

✓ 1 CL outbreak was shared from district Mardan

- Total of 9 CL cases outbreak was reported from UC Baizo Kharki. An alert of CL was reported from 3 small adjacent villages of UC Qasemi. Outbreak was already declared in the UC. In response active surveillance was conducted and 23 more clinical cases were identified in the area and surrounding, line list was maintained. UNHCR was requested through FPHC Mardan Office and they supplied 200 vials of required treatment for CL cases. On job training of health staff was conducted for Intralesional administration of Inj Glucantine. RBM focal person was informed and requested for vector control measures in the areas. FPHC and Relief Int. will also provide support in vector control interventions in the area with RBM & PPHI. EDO Health and focal person were informed.

**Figure-4: Weekly trend of SPR and FR in Khyber Pakhtunkhwa and FATA (From January 1<sup>st</sup> to October 27<sup>th</sup>, 2012):-**



A cumulative figure of RDT examined for the current year is 102,936 slides including 20,838 slides positive i.e. 20.2% accounted for Slide Positivity Rate (SPR). Out of total positive, Falciparum Rate (FR) was accounted 9.4% (1,966 slides). Similarly Vivax 90.5% (18,872 slides) and Mixed 3% (652 slides) were reported.

For the current week total 1,764 slides were tested for Malaria. Out of which SPR is accounted 16.2% (285 slides) including FR 12% (35 slides), Vivax 88% (250 slides) and Mixed 3% (8 slides).

**Table-1: Leading causes of seeking health care in flood affected districts, compiled weekly reports**

Disease name	Week-40	Week-41	Week-42	Week-43	Total Consultations (1 <sup>st</sup> Jan to 27 <sup>th</sup> Oct, 2012)
Acute Diarrhoea	15,046 (10.3%)	14,324 (9.5%)	10,764 (8.1%)	8,898 (8%)	549,248 (9.3%)
Bloody Diarrhoea	939 (0.6%)	771 (0.5%)	761 (0.5%)	503 (0.5%)	43,576 (1%)
Suspected Malaria	3,795 (3%)	3,397 (2.3%)	3,164 (2.2%)	2,041 (2%)	119,799 (2%)
Skin Diseases	3,981 (3%)	3,961 (2.6%)	3,372 (2.3%)	2,452 (2.2%)	158,399 (3%)
Pyrexia of Unknown Origin	8,904 (6%)	8,484 (5.6%)	7,514 (5.2%)	5,166 (5%)	301,388 (5%)
Acute Respiratory Infection	31,133 (21.2%)	33,873 (22.5%)	32,476 (22.4%)	23,476 (21.6%)	1,224,094 (21%)
<b>Total Consultations</b>	<b>146,563</b>	<b>150,402</b>	<b>144,840</b>	<b>110,838</b>	<b>5,914,481</b>

The above table shows compiled communicable diseases cases from weekly reports and proportional morbidity through eDEWS reported. Since January 1, 2012, approximately 5,914,481 patient consultations have been reported to the eDEWS from Khyber Pukhtunkhwa province and Federal Administered Tribal Areas (FATA).

In this week 43, 2012 (October 21 to 27, 2012) reports were received from 464 health centres and the major causes for seeking health care by the communities in almost all of the regions were diarrhoeal diseases 8,898 cases or 8%, acute respiratory infections 23,476 cases or 21.6%, skin diseases 2,452 cases or 2.2% and suspected malaria 2,041 cases or 2%.

**Figure-5: Total number of HFs reported and consultations (Week no.1 to 43, 2012)**      **Figure-6: Leading communicable diseases percentage trend in Khyber Pakhtunkhwa and FATA (Week no.1 to 43, 2012)**

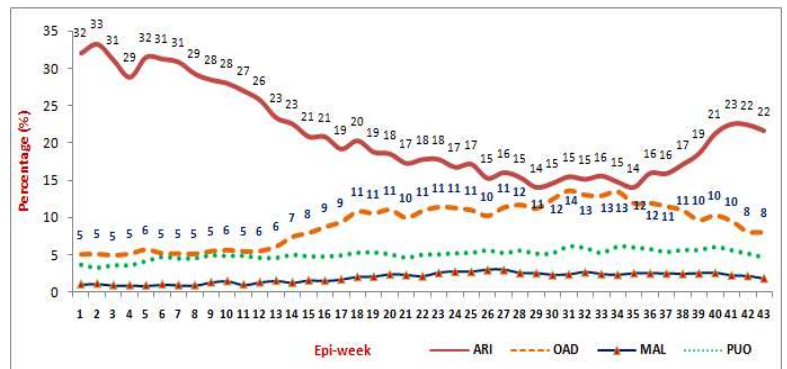
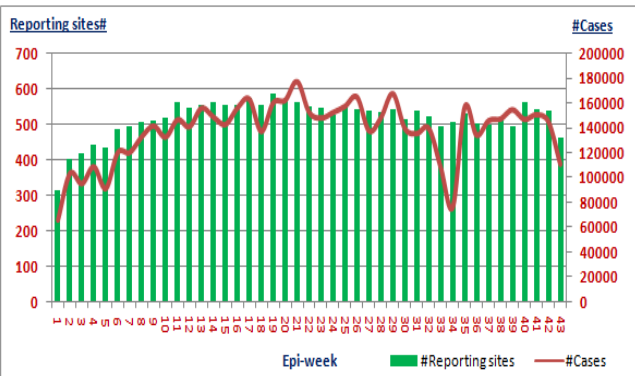


Figure 4 shows the number of health facilities and total number of consultations reported. Figure 5 shows the weekly percentage trend of ARI, Other Acute Diarrhoea, suspected Malaria and Pyrexia of Unknown Origin in Khyber Pakhtunkhwa and FATA from week 1 to 43, 2012. ARI percentage is showing slight decrease in week 43 and OAD showing 0.1% decrease in percentage in week 43 as compared to previous week.

**Table-2: Respiratory Diseases situation in Khyber Pakhtunkhwa and FATA**

Respiratory Diseases	Week-42	Week-43
Upper Respiratory Infection	31,274	23,397
Pneumonia <5	701	348
Pneumonia >5	501	241

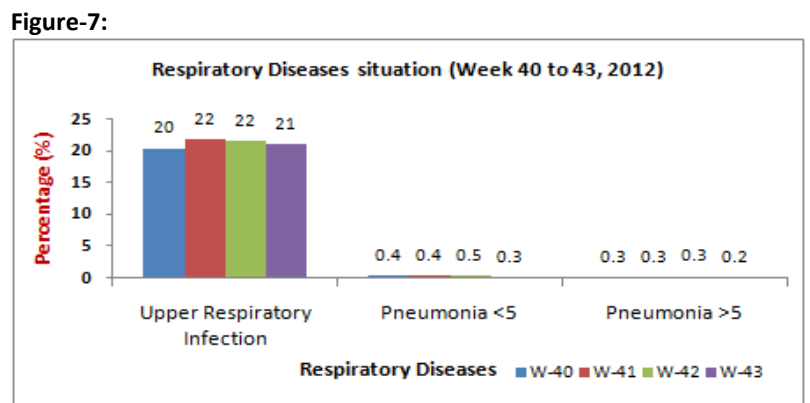


Table 2 shows the last two weeks Acute Respiratory Tract Infection (Upper Respiratory Tract Infection and Lower Respiratory Tract Infection (Pneumonia)) consultations comparison and figure 5 shows the last four weeks percentage situation of ARI.



**Table-3: Gastro Intestinal Diseases situation in Khyber Pakhtunkhwa and FATA**

Gastro Intestinal Diseases	Week-42	Week-43
Bloody Diarrhea <5	327	233
Bloody Diarrhea >5	434	270
Other Acute Diarrhea <5	6,180	4,909
Other Acute Diarrhea >5	5,584	3,989
Suspected Typhoid Fever	426	267

**Figure-8:**

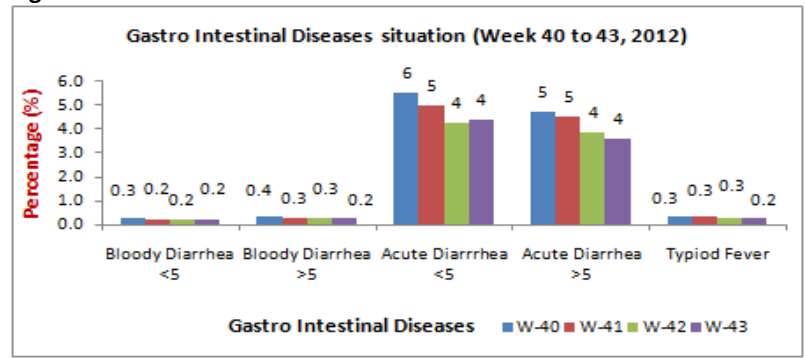
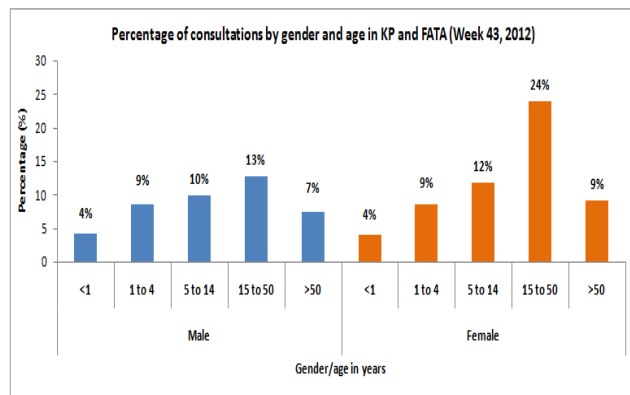


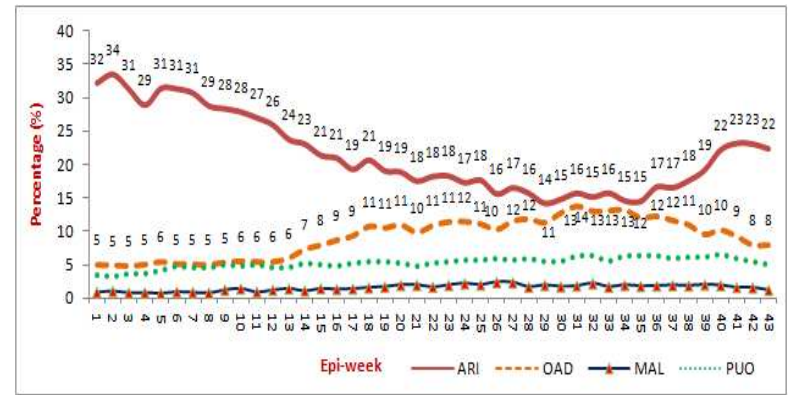
Table 3 shows the last two weeks cases of Gastro Intestinal Diseases and figure 6 shows the Gastro Intestinal Diseases percentage of last four weeks.

**Province Khyber Pakhtunkhwa:**

**Figure-9: Percentage of consultations by gender and age wise**

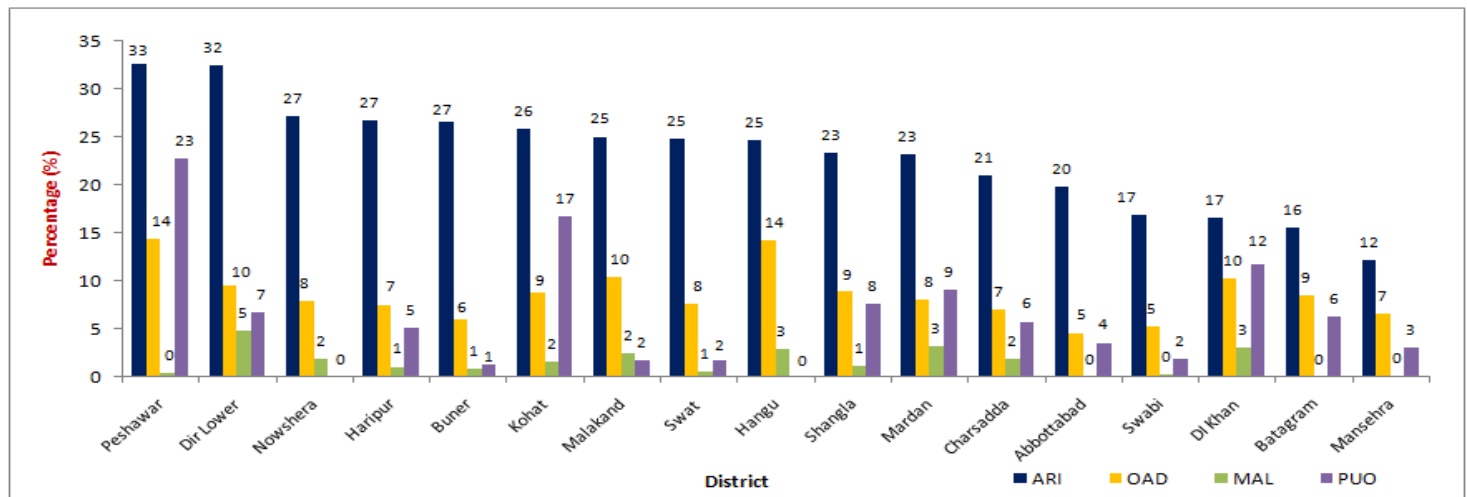


**Figure-10: Weekly diseases (ARI, OAD, MAL and PUO) percentage trend**



- Figure 8 shows percentage of consultations by gender and age wise in health events in over all diseases, male to female patients’ ratio reported was **43%** or **42,921** cases and **57%** or **57,261** cases respectively.
- Figure 9 shows weekly percentage trend of ARI, OAD, MAL and PUO from week 1 to 43, 2012.
- This week 17 districts reported to eDEWS from 434 health facilities with a total of **100,182** patients’ consultations.
- Acute Respiratory Tract Infection 22,465 cases reported were showing 1% decrease in percentage as compared to week 42 patients’ visits and accounted for 22.4% of the total consultations.
- Other Acute Diarrhea cases 8,063 or 8% showing no change in percentage as compared to previous week and suspected Malaria 1,258 cases or 1.3% were reported.
- Pyrexia of Unknown Origin cases were shared 4,935 or 5%.
- Suspected Typhoid Fever (TF) cases 244 or 0.2% and Scabies cases 2,243 or 2.2% were reported.

**Figure-11: ARI, OAD, MAL and PUO percentage situation of Khyber Pakhtunkhwa district wise in week 43, 2012**



The above figure shows ARI, OAD, MAL and PUO percentage situation district wise in week 43, 2012. During this week high percentage of ARI consultations were reported from district Peshawar 33% (1,044 cases) followed by district Dir Lower 32.5% (533 cases), Nowshera 27% (763 cases), Haripur 27% (1,895 cases), Buner 27% (1,790 cases), Kohat 26% (343 cases), Malakand 25% (1,940 cases), Swat 25% (5,685 cases), Hangu 25% (176 cases), Shangla 23% (824 cases), Mardan 23% (1,401 cases) and Charsadda 21% (1,846 cases). Similarly high percentage of OAD cases were reported from district Peshawar 14% (463 cases), Hangu 14% (102 cases), Malakand 10% (811 cases), D.I. Khan 10% (596 cases) and Dir Lower 10% (157 cases). High percentages of suspected Malaria were reported from district Dir Lower 5% (79 cases), Mardan 3% (192 cases), D.I. Khan 3% (183 cases) and Hangu 3% (21 cases). High percentage of Pyrexia of Unknown Origin (PUO) consultations were reported from district Peshawar 23% (731 cases), Kohat 17% (221 cases), D.I. Khan 12% (686 cases), Mardan 9% (550 cases), Shangla 8% (271 cases), Dir Lower 7% (110 cases), Battagram 6% (400 cases) and Charsadda 6% (508 cases).

**Table-4: Malaria Slides/RDT examination report of Khyber Pakhtunkhwa district wise in week 43, 2012**

District	Slides / RDT examined	P. Falciparum	P. Vivax	P. Mixed	Total +Ve	Slide Positivity Rate (SPR)	Falciparum Rate (FR)	Vivax Rate	Mixed Rate
Charsadda	112	1	23	0	24	21.4	4.2	95.8	0.0
DI Khan	105	4	5	2	11	10.5	54.5	45.5	18.2
Dir Lower	51	0	11	0	11	21.6	0.0	100.0	0.0
Kohat	36	2	14	0	16	44.4	12.5	87.5	0.0
Malakand	98	0	5	0	5	5.1	0.0	100.0	0.0
Mansehra	6	0	3	0	3	50.0	0.0	100.0	0.0
Mardan	397	0	35	3	38	9.6	7.9	92.1	7.9
Nowshera	95	0	31	0	31	32.6	0.0	100.0	0.0
Shangla	32	0	7	0	7	21.9	0.0	100.0	0.0
Swat	135	0	4	0	4	3.0	0.0	100.0	0.0
<b>Total</b>	<b>1,067</b>	<b>7</b>	<b>138</b>	<b>5</b>	<b>150</b>	<b>14.1</b>	<b>8.0</b>	<b>92.0</b>	<b>3.3</b>

A total of **1,067** slides were tested for Malaria in this week. Out of which **150** slides were positive and accounted for SPR is **14%** including **8%** (12 slides) for Falciparum Ratio, **92%** (138 slides) for Vivax ratio and **3.3%** (5 cases) for Mixed ratio.

### Current week's Alert/Outbreak in Khyber Pakhtunkhwa:

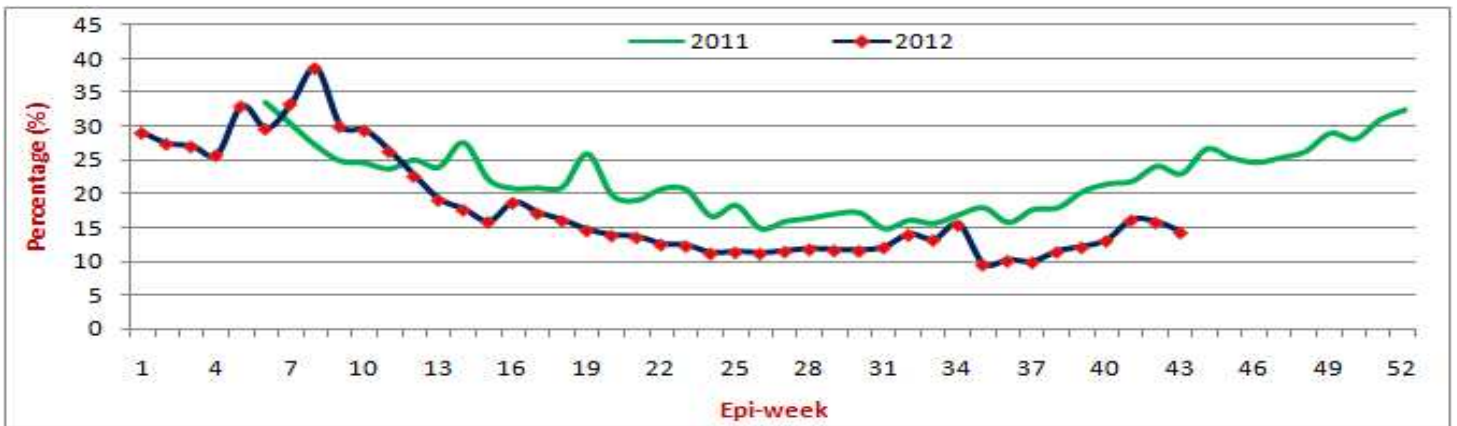
- A total of **27 alerts** including **1** for Cutaneous Leishmaniasis (CL) outbreak were received. 17 alerts for suspected Measles, 3 each for CL and Dengue Fever (DF), 2 for Diphtheria while 1 each for Acute Watery Diarrhoea (AWD) and Bloody Diarrhoea (BD) Pertussis were shared and responded.

S. No	Date Investigated	Suspected Disease	District	Location	<5 M	>5 M	<5 F	>5 F	Sample	Positive	Cases	Death
1	23-Oct-12	Measles	Mansehra	Phulra	0	0	1	0	0	r	1	0
2	24-Oct-12	DF	Mansehra	Kukko mera Sher Garh Oghi	0	0	0	1	1	r	1	0
3	22-Oct-12	Measles	Mardan	Village Gulshan Abad, UC Par Hott	1	1	0	0	0	r	2	0
4	22-Oct-12	Measles	Mardan	Near Neher Chowk, UC Par Hotti	1	0	0	0	1	r	1	0
5	23-Oct-12	AWD	Mardan	Fazal Haq College, Ghareeb Abad, UC Chamtar	0	0	0	1	1	r	1	0
6	23-Oct-12	Measles	Mardan	Village Dobiyan, UC Ghari	0	0	1	0	0	r	1	0
7	24-Oct-12	C. Leishmaniasis	Mardan	Village Surey Khowa & Alam Khan Kally, UC Baizo Kharki, Tehsil Takht Bhai	0	4	0	5	0	r	9	0
8	25-Oct-12	DF	Abbottabad	Mohalla Shekhan, Mirpur	0	1	0	0	0	r	1	0
9	22-Oct-12	Measles	Haripur	Village Panian, UC Panian	1	0	0	0	0	r	1	0
10	25-Oct-12	C. Leishmaniasis	Haripur	Afghan Refugee camp Dheenda	0	1	0	0	0	r	1	0
11	24-Oct-12	DF	Haripur	Village Hattar, UC Hattar	0	0	0	1	1	r	1	0

12	22-Oct-12	BD	Haripur	Village Mang,	2	1	0	1	0	r	4	0
13	22-Oct-12	Measles	Charsadda	Main Shabqadar	0	0	1	0	1	r	1	0
14	23-Oct-12	Measles	Charsadda	Miangaan Kallay	0	0	1	0	1	r	1	0
15	22-Oct-12	Measles	Swat	village mangore kass & uc akamruf bamekhail tehsi baboza	1	0	0	0	1	r	1	0
16	22-Oct-12	Measles	Swat	village malamjaba uc kishawara tehsi charbagh	0	0	1	0	1	r	1	0
17	23-Oct-12	Measles	Swat	village garasa kokari & uc sangohta tehsi baboza	1	0	0	0	1	r	1	0
18	23-Oct-12	Measles	Swat	village & uc odigram mohala mohd umer malik tehsil baboza	1	0	2	0	0	r	3	0
19	24-Oct-12	Measles	Swat	village akoon kaly near road uc koz abakhel tehsil kabal	1	0	2	0	2	r	3	0
20	24-Oct-12	Measles	Swat	village teaghak chinobaba uc totanobandi tehsil kabal	0	0	3	0	1	r	3	0
21	24-Oct-12	Measles	Swat	village tanckay near hospital uc bar abakhel tehsi kabal	0	1	0	0	1	r	1	0
22	25-Oct-12	Measles	Swat	village sumbat cham uc baidara tehsi matta	1	0	0	0	1	r	1	0
23	25-Oct-12	Measles	Swat	village sinpora uc barthana tehsi matta	1	0	0	0	1	r	1	0
24	24-Oct-12	C. Leishmaniasis	Swat	Village & UC Charbagh, Tehsil Charbagh	0	1	0	0	0	r	1	0
25	23-Oct-12	Diphtheria	Buner	village matwanai u c dewana baba tehsil gagra	0	1	0	0	2	r	1	1
26	23-Oct-12	Diphtheria	Buner	village delay near riyal u/c battara	0	0	1	0	2	r	1	1
27	23-Oct-12	Measles	Buner	village matwanai u c dewana baba tehsil gagra	1	0	2	0	3	r	3	0

### Federal Administered Tribal Areas (FATA):

Figure-12: Two years trend of Acute Respiratory Tract Infection (ARI) in FATA



DEWS was started in FATA three agencies (Bajaur, Khyber, Mohmand) since February, 2011 during FATA IDPs crisis. Figure 11 shows 2 years weekly percentage trend of ARI percentage trend. In week 43 ARI 1,521 cases or 14.3% were shared showing 1.5% decrease in percentage as compared to previous week.

Figure-13: Percentage of consultations by gender and age wise

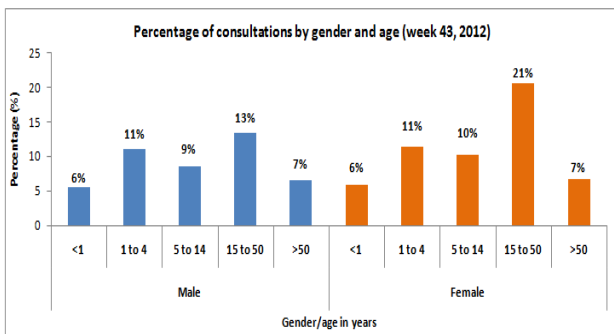
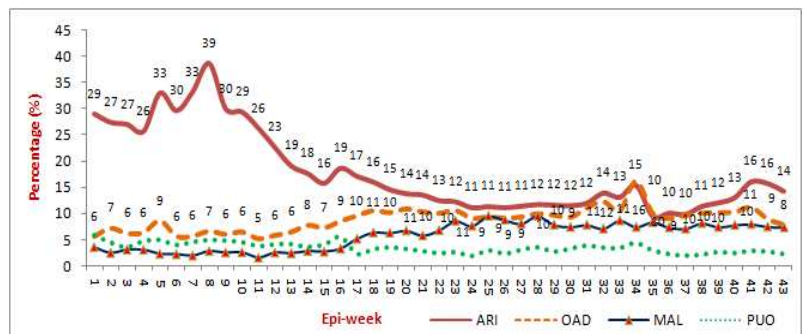
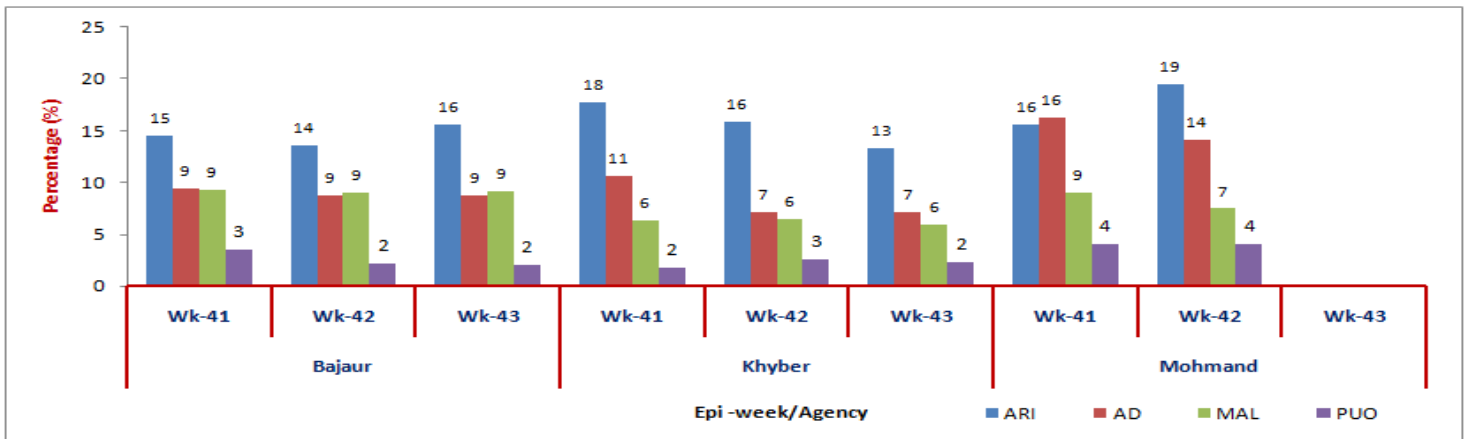


Figure-14: Weekly diseases (ARI, OAD, MAL and PUO) percentage trend



- Figure 12 shows percentage of consultations by gender and age wise in health events in over all diseases, male to female patients' ratio reported was **45%** or **4,822** cases and **55%** or **5,834** cases respectively
- Figure 13 shows weekly percentage trend of ARI, OAD, MAL and PUO from week 1 to 43, 2012.
- This week, 30 health facilities reported from 2 agencies to eDEWS with a total of **10,656** patients' consultations.
- Acute Respiratory Tract Infection (ARI) 1,521 cases reported were showing 1.5% decrease in percentage as compared to week 42 patients' visits and accounted for 14.3% of the total consultations.
- Other Acute Diarrhea (OAD) 835 cases or 8% were showing 1% decrease in percentage as compared to week 42 and suspected Malaria (Mal) 783 cases or 7.3% were shared.
- Pyrexia of Unknown Origin (PUO) shared 231 cases or 2.2% which shows 0.5% decrease in percentage as compared to previous week, suspected Typhoid Fever (TF) 23 cases or 0.2% and Scabies 209 cases or 2% were reported.

**Figure-15: ARI,OAD, MAL and PUO percentage situation of Federal Administered Treaty Agency (FATA) in last three weeks**



The above figure 14 shows ARI, OAD, MAL and PUO percentage situation in FATA three agencies. During week 43, 2012 high percentage of ARI consultations were reported as compared to other diseases. In this week high percentage of ARI and Other Acute Diarrhoea consultations were reported from Bajaur as compared to Khyber agency. In this week ARI 16% or 719 cases and 13% or 802 cases were shared respectively from Bajaur and Khyber agencies. Similarly OAD 9% or 402 cases and 7% or 429 cases were shared respectively from Bajaur and Khyber agencies. Pyrexia Unknown Origin (PUO) cases percentage were reported 2.3% or 140 cases and 2% or 91 cases respectively from Khyber and Bajaur agencies. Suspected Malaria were shared 9% or 424 cases from Bajaur and 6% or 359 cases from from Khyber agency.

**Table-5: Malaria Slides/RDT examination report of FATA agency wise in week 43, 2012**

Agency	Slides / RDT examined	P. Falciparum	P. Vivax	P. Mixed	Total +Ve	Slide Positivity Rate (SPR)	Falciparum Rate (FR)	Vivax Rate	Mixed Rate
Bajaur	391	19	54	3	76	19.4	28.9	71.1	3.9
Khyber	306	1	58	0	59	19.3	1.7	98.3	0.0
<b>Total</b>	<b>697</b>	<b>20</b>	<b>112</b>	<b>3</b>	<b>135</b>	<b>19.4</b>	<b>17.0</b>	<b>83.0</b>	<b>2.2</b>

A total of **697** slides were examined for Malaria in this week. Out of which **135** slides were positive and accounted for SPR is **19.4%** including **17%** (23 slides) for Falciparum Ratio, **83%** (112 slides) for Vivax and **2.2%** (3 slides) for Mixed.

### Current week's Alert/Outbreak in FATA:

- A total of 8 alerts (4 for Cutaneous Leishmaniasis (CL), 3 for suspected Measles and 1 for Pertussis) were reported and responded in this week.

S. No.	Date Investigated	Suspected Disease	Agency	Location	<5 M	>5 M	<5 F	>5 F	Sample	Positive	Cases	Death
1	22-Oct-12	C. Leishmaniasis	Khyber Agency	Village Kajoki, UC Janbaz killi, Tehsil Bara	1	0	0	0	0	r	1	0
2	23-Oct-12	Measles	Khyber Agency	Village Khandan, UC Sheikhmal khel, Tehsil Landikotal	1	0	0	0	0	r	1	0
3	24-Oct-12	C Leishmaniasis	Khyber Agency	Village Hussain, UC Pindi Lalma, Tehsil Mulagori	0	1	0	2	0	r	3	0
4	24-Oct-12	C. Leishmaniasis	Bajaur Agency	village Malasaid of Tehsil Salarzai	0	3	0	0	0	r	3	0



5	25-Oct-12	C. Leishmaniasis	Bajaur Agency	village Lara Banda, Tehsil Khar	0	1	0	0	0	r	1	0
6	22-Oct-12	Measles	Bajaur Agency	village Lara Banda, Tehsil Khar	0	0	1	0	0	r	1	0
7	22-Oct-12	Measles	Bajaur Agency	village Zaray, Tehsil Mamound	0	0	1	0	0	r	1	0
8	22-Oct-12	Pertussis	Bajaur Agency	village Kambelai-Batwar, Tehsil Salarzai	0	0	1	0	1	r	1	0

Figure 16: Total number of alerts including outbreaks situation in KP and FATA through eDEWS System (Week 43, 2012)

