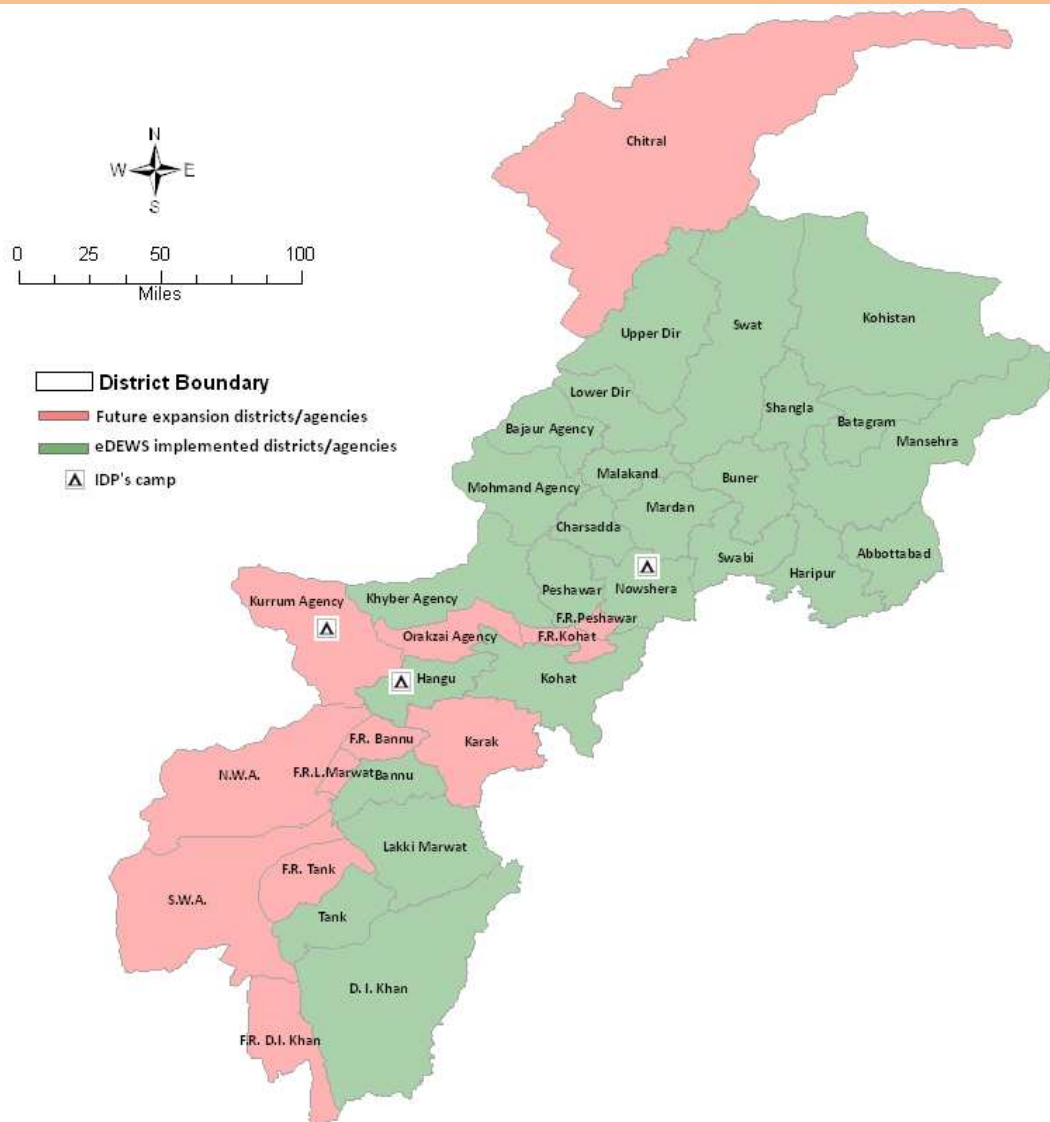


Weekly **Epidemiological** Bulletin

Electronic Disease Early Warning System & Response (eDEWS)

in Khyber Pakhtunkhwa and FATA

Epidemiological Week no. 40 (September 30 to October 6, 2012)



Priority diseases under surveillance in eDEWS

Respiratory Diseases

Acute (upper) respiratory infections

Pneumonia <5 years

Pneumonia > 5 years

Suspected Diphtheria

Suspected Pertussis

Gastro Intestinal Diseases

Acute Watery Diarrhea <5 year

Acute Watery Diarrhea > 5 year

Bloody Diarrhea <5 years

Bloody Diarrhea > 5 years

Other Acute Diarrhea < 5 years

Other Acute Diarrhea > 5 years

Suspected Enteric/Typhoid Fever

Other Communicable

Suspected Malaria

Suspected Meningitis

Suspected Dengue Fever

Suspected Viral Hemorrhagic Fever

Pyrexia Of Unknown Origin

Vaccine Preventable

Suspected Measles

Suspected Acute Viral Hepatitis

Chronic Viral Hepatitis

Neonatal Tetanus

Acute Flaccid Paralysis

Skin Disease

Scabies

Cutaneous Leishmaniasis

Injuries /Poisoning

Injuries

Snake bite

Other unusual diseases

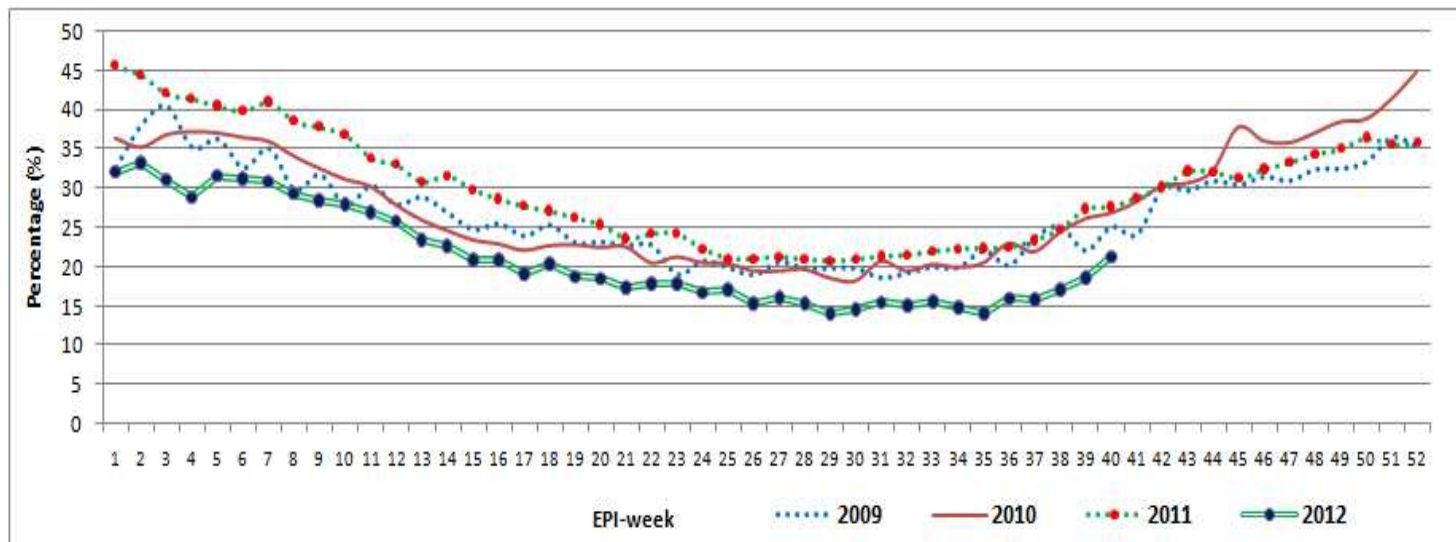
Other unusual diseases

HIGHLIGHTS

- **18 districts and 3 agencies** provided surveillance data to the eDEWS this week from **554** health facilities.
- A total of **126,122 consultations** were reported through eDEWS of which 21.2% or 30,248 cases were Acute Upper Respiratory Infection, is still the highest cause of morbidity of total consultations were showing 3% increase in percentage as compared to week 39.
- Other Acute Diarrhoea shared 10.3% or 14,608 cases of the total consultations showing 0.6% increase in percentage as compared to previous week.
- Pyrexia of Unknown Origin accounted for 6% or 8,485 cases out of total consultations.
- Skin Infection (Skin Inf.) reported at 3% or 3,813 cases and suspected Typhoid Fever comprised only 0.3% or 426 cases out of total consultations.
- A total of **58 alerts** including **6 outbreaks** (6 for Measles and 1 for Malaria) were received. 37 alerts for suspected Measles, 6 each for Cutaneous Leishmaniasis (CL) and Acute Watery Diarrhea (AWD), 4 for Dengue Fever (DF) while 1 each for Diphtheria, Falciparum Malaria, Mumps, Neonatal Tetanus (NNT) and Tetanus were shared and responded.

Compiled situation in Khyber Pakhtunkhwa & FATA

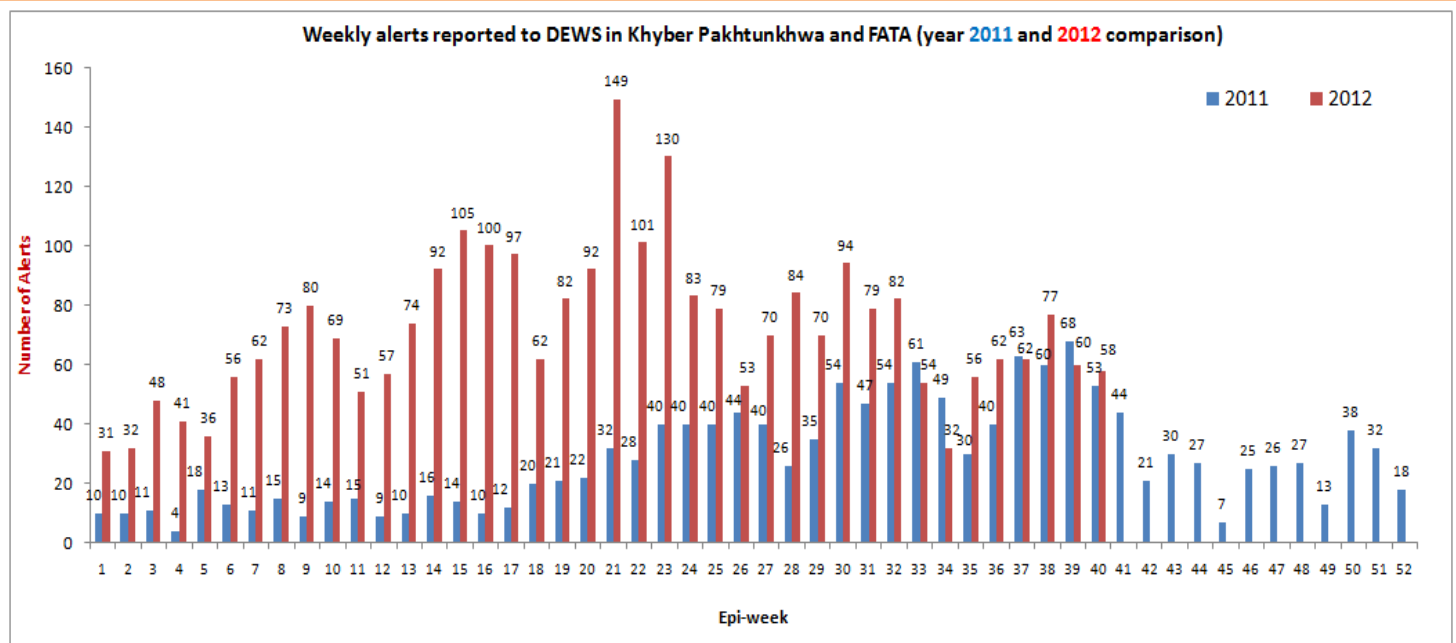
Figure-1: Four years trend of Acute Respiratory Infection (ARI) in Khyber Pakhtunkhwa/FATA (2009, 2010, 2011 and 2012)



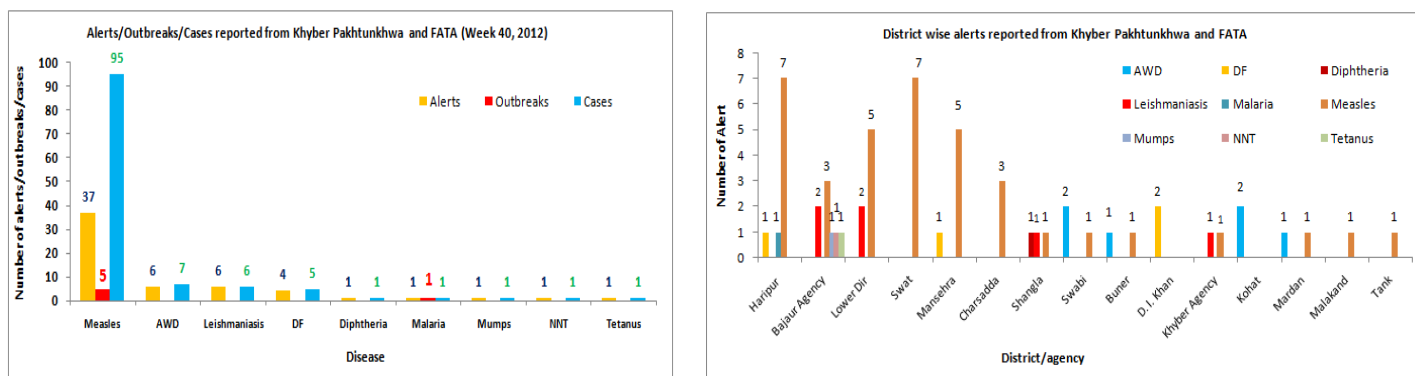
The above graph shows the trend of Acute Respiratory Infection (ARI) cases out of total consultations reported to DEWS in 2009, 2010, 2011 and 2012 up until now. In this week 40, 2012 ARI consultations reported 21.2% or 30,248 cases of total cases and show 3% increase in percentage as compared to week 39.

During this week high percentage of ARI consultations were reported from district Swat 35% followed by district Peshawar 33%, Dir Lower 30%, Malakand 27%, Shangla 26%, Haripur 26%, Nowshera 26% and Abbottabad 24%.

Figure-2: Alerts reported in Khyber Pakhtunkhwa/FATA (year 2011 and 2012 comparison)



The above graph shows the different reported alerts to DEWS from year 2011 and 2012. High number of alerts reported in year 2012 due to more active surveillance and response. A cumulative figure for the current year is **2,880 alerts (6,846 cases)** including of **231 outbreaks** were reported. Measles alerts are leading in Khyber Pakhtunkhwa and FATA with **2,139 alerts (3,709 cases)** including **141 outbreaks**. Followed by *C. Leishmaniasis* **301 alerts (1,043 cases)** including **32 outbreaks**, Neonatal Tetanus **114 alerts (116 cases)**, AWD **109 alerts (807 cases)** including **15 outbreaks**, Typhoid Fever **44 alerts (153 cases)** including **12 outbreaks**, Diphtheria **25 alerts (25 cases)** including **1 outbreak**, Bloody diarrhoea **23 alerts (136 cases)** including **5 outbreaks**, Dengue Fever **23 alerts (24 cases)** including **2 outbreak**, Acute Viral Hepatitis **17 alerts (195 cases)** including **8 outbreaks**, Pertussis **17 alerts (33 cases)** including **2 outbreaks**, suspected AFP **12 alerts (12 cases)**, Dog Bite **9 alerts (9 cases)**, Scabies **7 alerts (320 cases)** including **5 outbreaks**, H1N1 **7 alerts (20 cases)** including **2 outbreaks**, Falciparum Malaria **6 alerts (10 cases)** including **3 outbreaks**, Tetanus **6 alerts (6 cases)**, CCHF **5 alerts (5 cases)** including **1 outbreak**, Other Acute Diarrhoea **4 alerts (194 cases)** including **1 outbreak**, Chickenpox **3 alerts (8 cases)**, Viral Hemorrhagic Fever **2 alerts (2 cases)**, Mumps **2 alert (3 cases)**, Dengue Hemorrhagic Fever **1 alert (4 cases)**, Rabies **1 alerts (9 cases)** including **1 outbreak**, suspected DHF/CCHF **1 alert (1 case)**, Unexplained Fever **1 alert (1 case)**, Viral Hemorrhagic Fever **1 alert (1 case)** and Viral Encephalitis **1 alert (1 case)** were shared.

Figure-3: Number of alerts and alert cases reported in Khyber Pakhtunkhwa/FATA (Week 40, 2012)

The above left side graph shows different alerts and their cases reported in KP/FATA and right side graph shows different alerts shared by district wise in week 40, 2012. In this week a total of 58 alerts (118 cases) including 6 outbreaks were reported and responded.

- Highest number of alerts reported from Haripur 9 alerts including 7 for suspected Measles while 1 each for DF and Falciparum Malaria followed by
- Bajaur 8 alerts including 3 for suspected Measles, 2 for CL while 1 each for Mumps, NNT and Tetanus
- Lower Dir 7 alerts including 5 for suspected Measles and 2 for CL
- Swat 7 for suspected Measles
- Mansehra 6 alerts including 5 for suspected Measles and 1 for DF
- Charsadda 3 for suspected Measles
- Shangla 3 alerts including 1 each for CL, Diphtheria and suspected Measles
- Swabi 3 alerts including 2 for AWD and 1 for suspected Measles
- D.I. Khan 2 for Dengue Fever
- Khyber 2 alerts including 1 each for CL and suspected Measles
- Kohat 2 for AWD
- Mardan 2 alerts including 1 each for AWD and suspected Measles
- Buner 2 alerts including 1 each for AWD and suspected Measles
- Malakand 1 for suspected Measles
- Tank 1 for suspected Measles

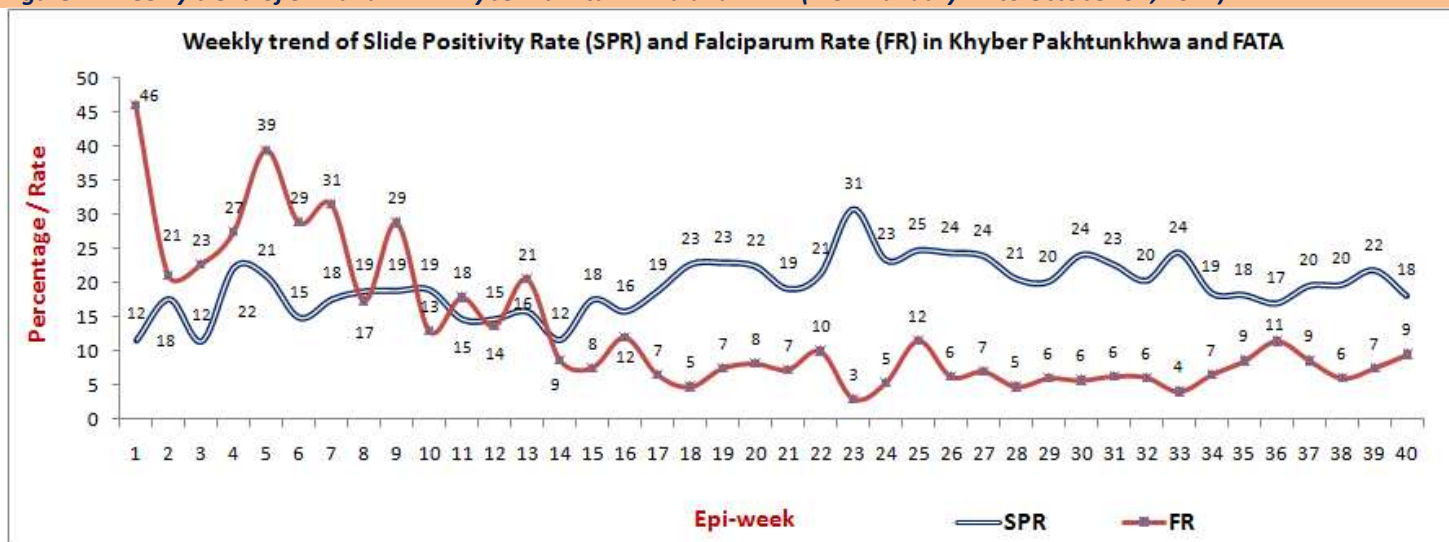
❖ **6 outbreaks (Measles 5 and Malaria 1) were reported in this week.**

- ✓ 4 Measles outbreaks were shared from district Lower Dir
 - Total of 9 suspected measles cases were reported from DHQ Hospital Dir Lower. WHO investigated the case, detailed history was taken from the patient and blood sample was collected and sent to NIH Islamabad. Suspected case was partially immunized and BCG Scar was present. Health education session was conducted with the community and Vit. Drops given to the contacts and child. Alert was shared with EDO-H, Coordinator LHWs and Coordinator EPI to intensify Mop up campaign in village Godar.
 - Total of 8 suspected measles cases were reported from DHQ Hospital Dir Lower. WHO investigated the case, detailed history was taken from the patient and blood sample was collected and sent to NIH Islamabad. Suspected case was partially immunized and BCG Scar was present. 1 out of 8 children was found fully vaccinated. Health education session was conducted with the community and Vit.A drops given to the contacts and child. Alert was shared with EDO-H, Coordinator LHWs and Coordinator EPI to intensify Mop up campaign in village Muslim Bagh.
 - Total of 7 suspected measles case was reported from DHQ Hospital Dir Lower. WHO investigated the case, detailed history was taken from the patient and blood sample was collected and sent to NIH Islamabad. Suspected case was partially immunized and BCG Scar was present. Health education session was conducted with the community and Vit.A drops given to the contacts and child. Alert was shared with EDO-H, Coordinator LHWs and Coordinator EPI to intensify Mop up campaign in village.
 - Total of 10 suspected measles cases were reported from DHQ Hospital Dir Lower. WHO investigated the cases, detailed

history was taken from the patients and blood sample was collected and sent to NIH Islamabad. Suspected case was partially immunized and BCG Scar was present. Health education session was conducted with the community and Vit.A drops given to the contacts and child. Alert was shared with EDO-H, Coordinator LHWs and Coordinator EPI to intensify Mop up campaign in village. 110 children in total, 66 children (under 5 years), and 44 children (over 5 years) were vaccinated during campaign by EPI vaccinator of CD Koto. 12 vials were used.

- ✓ 1 Falciparum Malaria outbreak was shared from district Haripur
 - 1 cases of Falciparum malaria confirmed by both RDT and microscopy. Patient developed high grade fever with chills and body aches. No travel history to malaria endemic area. Active surveillance conducted in area. 4 cases with fever were identified. Slides were taken for examination. Health session conducted for the affected family. Bed nets distributed by LHWs. Larvicidal activity and fog spray is planned for coming week.
- ✓ 1 Measles outbreak was shared from district Swat
 - Total of 17 suspected measles cases were reported from village and UC Kalam. Initially 10 suspected cases were reported. During Mop-up and surveillance activities seven more cases were reported. No blood sample was taken as these are epidemiological related cases.

Figure-4: Weekly trend of SPR and FR in Khyber Pakhtunkhwa and FATA (From January 1st to October 6th, 2012):-



A cumulative figure of RDT examined for the current year is **95,803** slides including **19,628** slides positive i.e. **20.5%** accounted for Slide Positivity Rate (SPR). Out of total positive, Falciparum Rate (FR) was accounted **9.2%** (1,806 slides). Similarly Vivax **91%** (17,822 slides) and Mixed **3%** (616 slides) were reported.

For the current week total **2,909** slides were tested for Malaria. Out of which SPR is accounted **18%** (528 slides) including FR **9.4%** (50 slides), Vivax **90.5%** (478 slides) and Mixed **2%** (9 slides).

Table-1: Leading causes of seeking health care in flood affected districts, compiled weekly reports

Disease name	Week-37	Week-38	Week-39	Week-40	Total Consultations (1 st Jan to 6 th Oct, 2012)
Acute Diarrhoea	16,508 (11.5%)	16,097 (11%)	14,882 (10%)	14,608 (10.3%)	513,589 (9.3%)
Bloody Diarrhoea	1,013 (1%)	1,041 (1%)	1,074 (1%)	886 (0.6%)	41,483 (1%)
Suspected Malaria	3,642 (2.5%)	3,613 (2.5%)	3,914 (2.5%)	3,704 (3%)	111,093 (2%)
Skin Diseases	4,113 (3%)	3,707 (2.5%)	3,844 (2.5%)	3,813 (3%)	148,401 (3%)
Pyrexia of Unknown Origin	7,885 (5.5%)	8,329 (6%)	8,745 (5.6%)	8,485 (6%)	279,800 (5%)
Acute Respiratory Infection	22,793 (16%)	25,108 (17.1%)	28,582 (18.6%)	30,248 (21.2%)	1,132,538 (21%)
Total Consultations	143,940	146,932	153,928	142,389	5,502,188

The above table shows compiled communicable diseases cases from weekly reports and proportional morbidity through eDEWS reported. Since January 1, 2012, approximately 5,502,188 patient consultations have been reported to the eDEWS

from Khyber Pakhtunkhwa province and Federal Administered Tribal Areas (FATA).

In this week 40, 2012 (September 30 to October 6, 2012) reports were received from 554 health centres and the major causes for seeking health care by the communities in almost all of the regions were diarrhoeal diseases 14,608 cases or 10.3%, acute respiratory infections 30,248 cases or 21.2%, skin diseases 3,813 cases or 3% and suspected malaria 3,704 cases or 3%.

Figure-5: Total number of HFs reported and consultations (Week no.1 to 40, 2012)

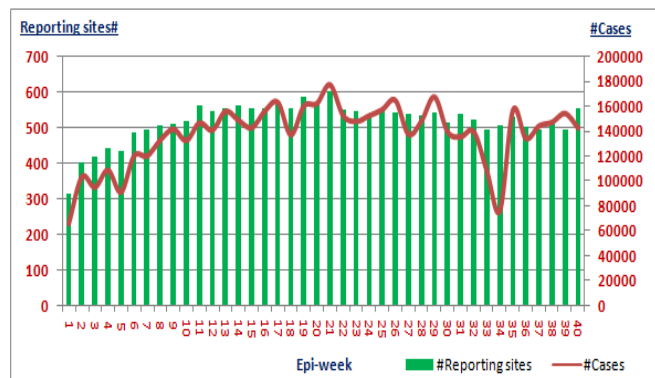


Figure-6: Leading communicable diseases percentage trend in Khyber Pakhtunkhwa and FATA (Week no.1 to 40, 2012)

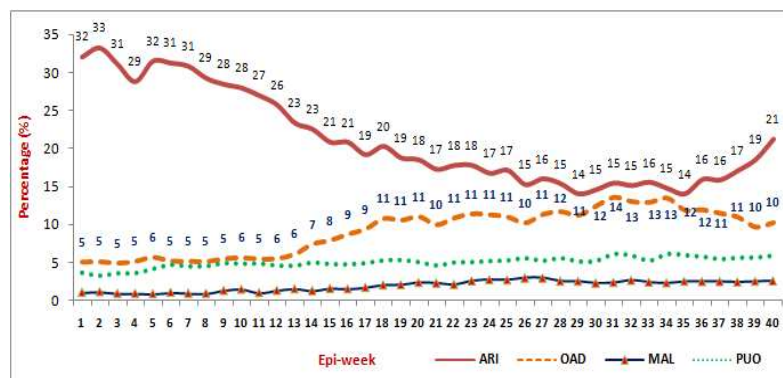


Figure 4 shows the number of health facilities and total number of consultations reported. Figure 5 shows the weekly percentage trend of ARI, Other Acute Diarrhoea, suspected Malaria and Pyrexia of Unknown Origin in Khyber Pakhtunkhwa and FATA from week 1 to 40, 2012. ARI percentage is showing increase since week 36 due to seasonal disease and OAD showing 0.6% increase in percentage in week 40 as compared to previous week.

Table-2: Respiratory Diseases situation in Khyber Pakhtunkhwa and FATA

Respiratory Diseases	Week-39	Week-40
Upper Respiratory Infection	27,459	29,155
Pneumonia <5	581	619
Pneumonia >5	542	474

Figure-7:

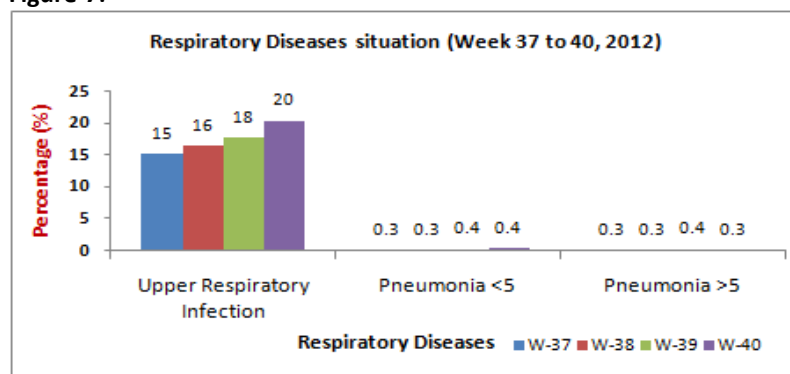


Table 2 shows the last two weeks Acute Respiratory Tract Infection (Upper Respiratory Tract Infection and Lower Respiratory Tract Infection (Pneumonia)) consultations comparison and figure 5 shows the last four weeks percentage situation of ARI.

Table-3: Gastro Intestinal Diseases situation in Khyber Pakhtunkhwa and FATA

Gastro Intestinal Diseases	Week-39	Week-40
Bloody Diarrhea <5	436	380
Bloody Diarrhea >5	638	506
Other Acute Diarrhea <5	7,865	7,844
Other Acute Diarrhea >5	7,017	6,764
Suspected Typhoid Fever	688	426

Figure-8:

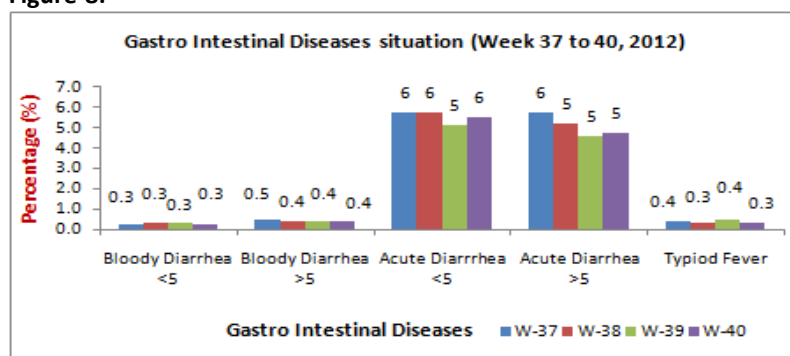


Table 3 shows the last two weeks cases of Gastro Intestinal Diseases and figure 6 shows the Gastro Intestinal Diseases percentage of last four weeks.

Province Khyber Pakhtunkhwa:

Figure-9: Percentage of consultations by gender and age wise

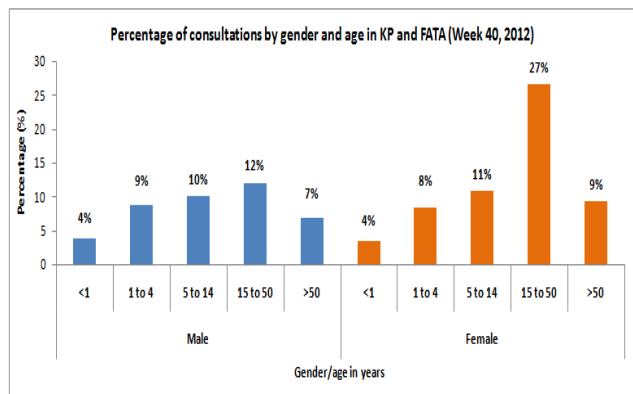
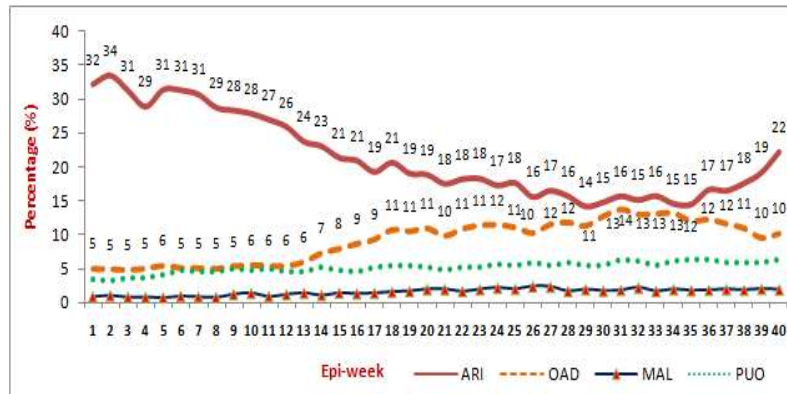
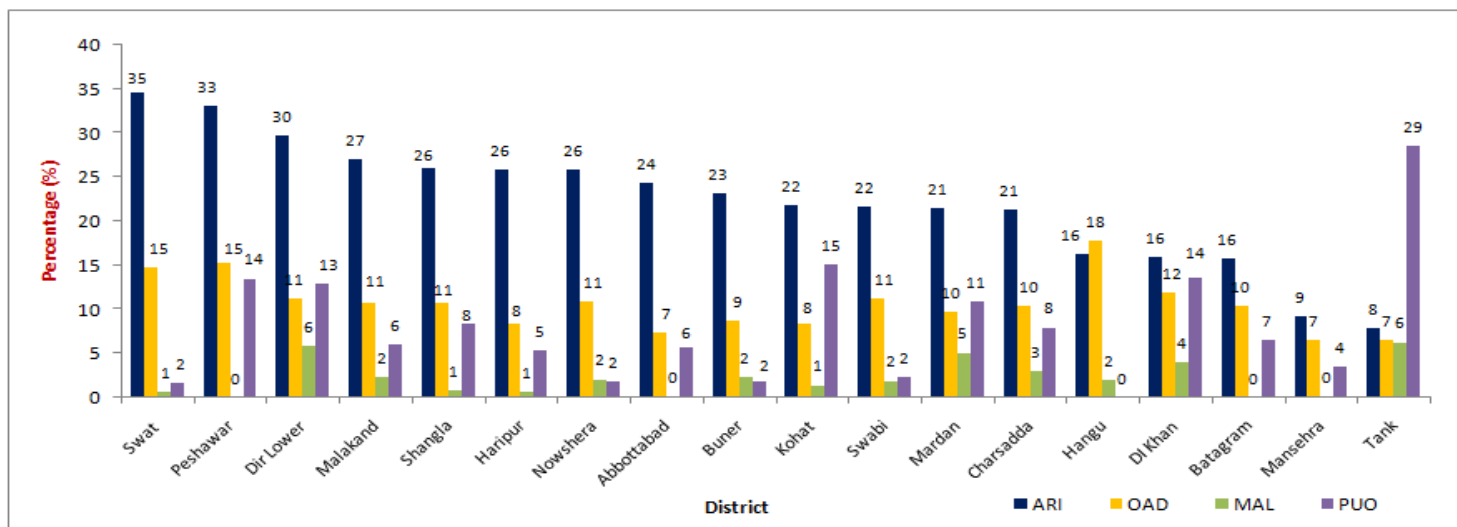


Figure-10: Weekly diseases (ARI, OAD, MAL and PUO) percentage trend



- Figure 8 shows percentage of consultations by gender and age wise in health events in over all diseases, male to female patients’ ratio reported was **41.6%** or **52,451** cases and **58.4%** or **73,671** cases respectively.
- Figure 9 shows weekly percentage trend of ARI, OAD, MAL and PUO from week 1 to 40, 2012.
- This week 18 districts reported to eDEWS from 500 health facilities with a total of **126,122** patients’ consultations.
- Acute Respiratory Tract Infection 28,121 cases reported were showing 3% increase in percentage as compared to week 39 patients’ visits and accounted for 22.3% of the total consultations.
- Other Acute Diarrhea cases 12,939 or 10.3% showing 0.6% increase in percentage as compared to previous week and suspected Malaria 2,432 cases or 2% were reported.
- Pyrexia of Unknown Origin cases were shared 8,099 or 6.4%.
- Suspected Typhoid Fever (TF) cases 333 or 0.3% and Scabies cases 3,455 or 3% were reported.

Figure-11: ARI, OAD, MAL and PUO percentage situation of Khyber Pakhtunkhwa district wise in week 40, 2012



The above figure shows ARI, OAD, MAL and PUO percentage situation district wise in week 40, 2012. During this week high percentage of ARI consultations were reported from district Swat 35% (4,136 cases) followed by district Peshawar 33% (1,190 cases), Dir Lower 30% (1,552 cases), Malakand 27% (1,923 cases), Shangla 26% (1,255 cases), Haripur 26% (2,624 cases), Nowshera 26% (3,197 cases) and Abottabad 24% (823 cases). Similarly high percentage of OAD cases were reported from district Hangu 18% (120 cases), Peshawar 15% (547 cases), Swat 15% (1,774 cases), D.I. Khan 12% (920 cases), Swabi 11% (388 cases), Dir Lower 11% (584 cases), Nowshera 11% (1,361 cases), Shangla 11% (520 cases) and Malakand 11% (767 cases). High percentages of suspected Malaria were reported from district Tank 6% (57 cases), Dir Lower 6% (310 cases), Mardan 5% (468 cases), D.I. Khan 4% (310 cases) and Charsadda 3% (346 cases). High percentage of Pyrexia of Unknown Origin (PUO) consultations were reported from district Tank 29% (256 cases), Kohat 15% (449 cases), D.I. Khan 14% (1,054 cases), Peshawar 14% (485 cases), Dir Lower 13% (674 cases), Mardan 11% (995 cases), Shangla 8% (401 cases), Charsadda 8% (895 cases), Battagram 7% (461 cases), Malakand 6% (427 cases) and Abottabad 6% (190 cases).

Table-4: Malaria Slides/RDT examination report of Khyber Pakhtunkhwa district wise in week 40, 2012

District	Slides / RDT examined	P. Falciparum	P. Vivax	P. Mixed	Total +Ve	Slide Positivity Rate (SPR)	Falciparum Rate (FR)	Vivax Rate	Mixed Rate
Charsadda	25	0	9	0	9	36.0	0.0	100.0	0.0
DI Khan	103	2	26	0	28	27.2	7.1	92.9	0.0
Dir Lower	154	0	26	0	26	16.9	0.0	100.0	0.0
Haripur	1	0	0	0	0	0.0	0.0	0.0	0.0
Kohat	218	2	23	0	25	11.5	8.0	92.0	0.0
Malakand	80	0	4	0	4	5.0	0.0	100.0	0.0
Mansehra	24	0	10	0	10	41.7	0.0	100.0	0.0
Mardan	769	0	58	4	62	8.1	6.5	93.5	6.5
Nowshera	257	2	53	0	55	21.4	3.6	96.4	0.0
Shangla	13	0	0	0	0	0.0	0.0	0.0	0.0
Swabi	4	0	0	0	0	0.0	0.0	0.0	0.0
Swat	83	0	4	0	4	4.8	0.0	100.0	0.0
Total	1,731	6	213	4	223	12.9	4.5	95.5	1.8

A total of **1,731** slides were tested for Malaria in this week. Out of which **223** slides were positive and accounted for SPR is **13%** including **4.5%** (10 slides) for Falciparum Ratio, **95.5%** (213 slides) for Vivax ratio and **2%** (4 cases) for Mixed ratio.

Current week's Alert/Outbreak in Khyber Pakhtunkhwa:

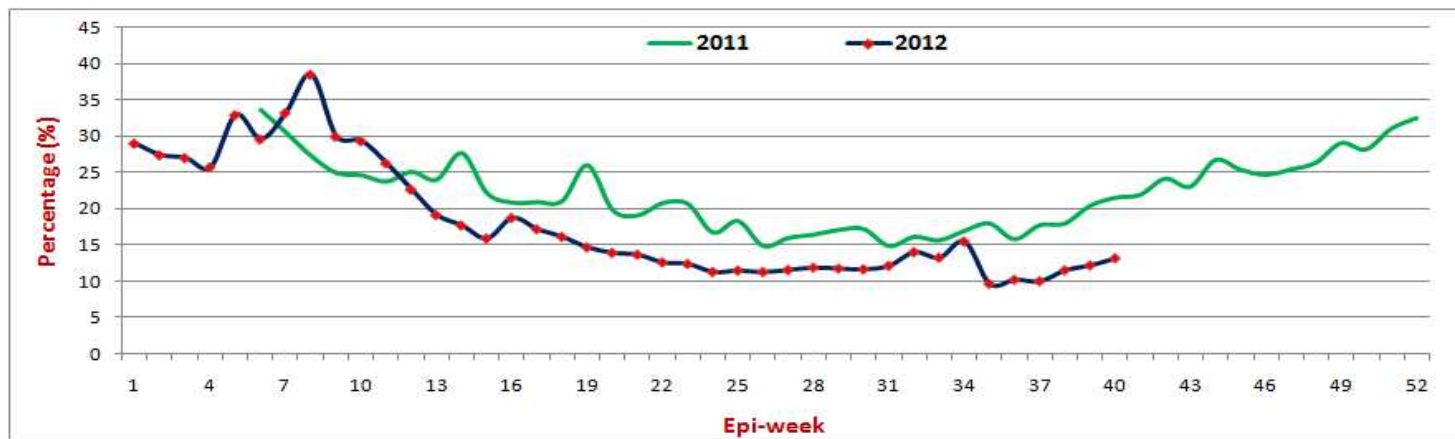
- A total of **48 alerts** including **6 outbreaks** (6 for Measles and 1 for Malaria) were received. 33 alerts for suspected Measles, 6 for Acute Watery Diarrhea (AWD), 3 for Cutaneous Leishmaniasis (CL), 4 for Dengue Fever (DF) while 1 each for Diphtheria and Falciparum Malaria were shared and responded.

S. No	Date Investigated	Suspected Disease	District	Location	<5 M	>5 M	<5 F	>5 F	Sample	Positive	Cases	Death
1	02-Oct-12	Measles	Charsadda	Khan Sahib Kallay	0	0	1	0	1	r	1	0
2	02-Oct-12	Measles	Charsadda	Nemoray Baba	0	0	1	0	1	r	1	0
3	02-Oct-12	Measles	Charsadda	Ghurambak Kallay	1	0	0	0	1	r	1	0
4	02-Oct-12	AWD	Kohat	Village Usterzai, UC Alizai, Tehsil Kohat	0	0	0	1	1	r	1	0
5	03-Oct-12	AWD	Kohat	Village Jungle Khel, UC Urban III, Tehsil Kohat	0	0	1	0	1	r	1	0
6	01-Oct-12	Measles	Lower Dir	Vilage Godar, UC Shalkandai, Tehsil Munda, Dir Lower	4	3	1	1	1	r	9	0
7	01-Oct-12	Measles	Lower Dir	Vilage Muslim Bagh, UC Kharkai, Tehsil Samarbagh, Dir Lower	3	1	2	2	1	r	8	0
8	01-Oct-12	Measles	Lower Dir	Vilage Dinjari, Kambat Tehsil Samarbagh Dir lower	1	2	1	3	1	r	7	0
9	03-Oct-12	Measles	Lower Dir	Vilage Hajiabad High School, UC Koto, Dir Lower	4	4	1	1	1	r	10	0
10	04-Oct-12	Measles	Lower Dir	Village Balambat Colony Near National Bank, UC and Tehsil Balamabat	0	0	1	4	1	r	5	0
11	05-Oct-12	C. Leishmaniasis	Lower Dir	UC Chukyatan, Dir Upper	0	0	0	1	1	r	1	0
12	05-Oct-12	C. Leishmaniasis	Lower Dir	UC Akhagram, Dir Lower	0	1	0	0	1	r	1	0
13	04-Oct-12	Measles	Malakand	Batkhela	3	0	0	0	1	r	3	0
14	01-Oct-12	Measles	Mardan	Village Jan Khan, Tehsil Takht Bhai, Mardan	1	0	1	0	0	r	2	0
15	04-Oct-12	AWD	Mardan	Village Azeem Baba, UC Shergarh, Tehsil Takht Bhai	0	1	1	0	1	r	2	0
16	29-Sep-12	Diphtheria	Shangla	Village Shalwo Dherai	0	1	0	0	1	r	1	0
17	01-Oct-12	Measles	Shangla	Village Shangla Top/Alpurai	1	0	0	0	1	r	1	0

18	05-Oct-12	C. Leishmaniasis	Shangla	Village Kabalgram	0	1	0	0	0	r	1	0
19	02-Oct-12	Measles	Mansehra	Bedadi UC Shinkari	1	0	0	0	0	r	1	0
20	03-Oct-12	Measles	Mansehra	Mandi Battal UC Battal	0	1	0	0	0	r	1	0
21	03-Oct-12	Measles	Mansehra	Mandi Battal UC Battal	1	0	0	0	0	r	1	0
22	04-Oct-12	Measles	Mansehra	Noghazi Mansehra City	0	0	1	1	1	r	2	0
23	04-Oct-12	Dengue Fever	Mansehra	Noghazi Mansehra City	0	1	0	0	1	r	2	0
24	06-Oct-12	Measles	Mansehra	Upper Mandiar UC Attershisha	0	0	0	1	0	r	1	0
25	02-Oct-12	AWD	Swabi	Yar Hussain	0	1	0	0	1	r	1	0
26	04-Oct-12	Measles	Swabi	BHU Saleem khan	1	0	0	0	1	r	1	0
27	04-Oct-12	AWD	Swabi	Yar Hussain	0	0	0	1	1	r	1	0
28	01-Oct-12	Measles	Haripur	Afghan Refugee camp 11	0	0	0	0	0	r	1	0
29	04-Oct-12	Measles	Haripur	Afghan Refugee camp 15	1	0	0	0	0	r	1	0
30	30-Sep-12	Measles	Haripur	Village Kotla, UC Muslimabad	0	0	1	0	0	r	1	0
31	02-Oct-12	Measles	Haripur	Village Kohala	1	0	0	0	0	r	1	0
32	02-Oct-12	Measles	Haripur	Muhallah Azizabad, Haripur city	1	0	0	0	0	r	1	0
33	06-Oct-12	Measles	Haripur	Village Nertopa	0	1	0	0	0	r	1	0
34	06-Oct-12	Measles	Haripur	Village Sarai, UC Gudwalian	1	0	0	0	0	r	1	0
35	03-Oct-12	Falciparum Malaria	Haripur	Village Rehana, UC Rehana	0	1	0	0	1	r	1	0
36	01-Oct-12	Dengue Fever	Haripur	Village Khoi Nara	0	1	0	0	0	r	1	1
37	13-Sep-12	Measles	Swat	Village & UC Kalam	7	5	4	1	0	r	17	0
38	02-Oct-12	Measles	Swat	village raang bangla, near Tankay, UC Kota, Tehsil Barikot	0	0	1	0	1	r	1	0
39	02-Oct-12	Measles	Swat	Village Talang, UC Kota. Tehsil Barikot	1	0	1	0	2	r	2	0
40	02-Oct-12	Measles	Swat	village amlookdara sirai ghkhay uc ghalegay tehsil barikot	1	0	0	0	1	r	1	0
41	03-Oct-12	Measles	Swat	Village Kolakaray, UC Kishawra. Tehsil Charbagh.	0	0	1	0	1	r	1	0
42	04-Oct-12	Measles	Swat	village khatakhelo, UC Hazara. Tehsil Kabul.	0	0	1	0	1	r	1	0
43	05-Oct-12	Measles	Swat	Watkay, UC Shahdara, Mingora city, Tehsil Babuzai	0	1	0	0	1	r	1	0
44	05-Oct-12	Dengue Fever	D. I. Khan	Abdul Khail, Tehsil Pahar Pur	0	1	0	0	1	r	1	0
45	05-Oct-12	Dengue Fever	D. I. Khan	Amma Khel, Tank	0	1	0	0	1	r	1	0
46	05-Oct-12	Measles	Tank	Kiri Haider	0	0	1	0	1	r	1	0
47	02-Oct-12	AWD	Buner	village dagar	0	1	0	0	0	r	1	0
48	03-Oct-12	Measles	Buner	village budal tehsil gagra	0	1	0	0	0	r	1	0

Federal Administered Tribal Areas (FATA):

Figure-12: Two years trend of Acute Respiratory Tract Infection (ARI) in FATA



DEWS was started in FATA three agencies (Bajaur, Khyber, Mohmand) since February, 2011 during FATA IDPs crisis. Figure 11 shows 2 years weekly percentage trend of ARI percentage trend. In week 40 ARI 2,127 cases or 12.1% were shared showing 1% increase in percentage as compared to previous week.

Figure-13: Percentage of consultations by gender and age wise

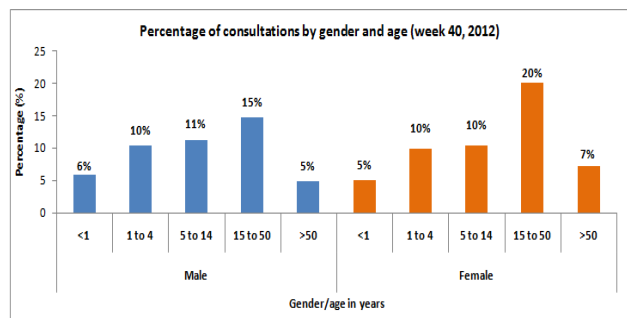
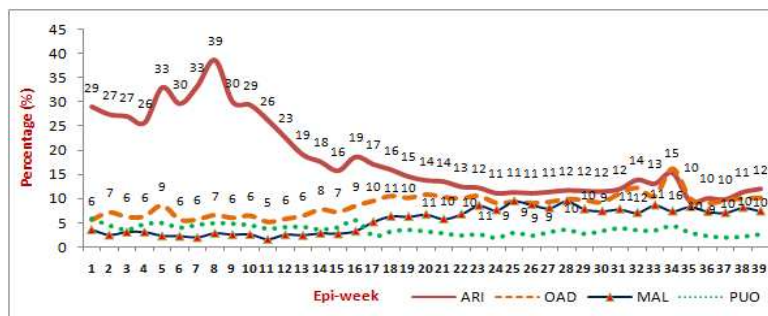
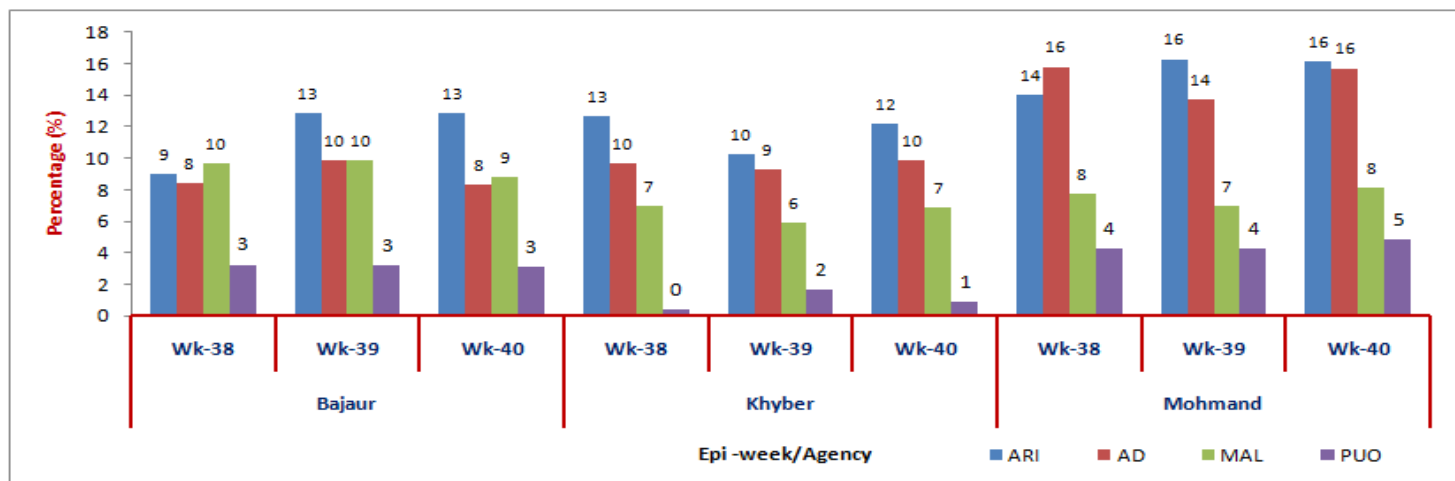


Figure-14: Weekly diseases (ARI, OAD, MAL and PUO) percentage trend



- Figure 12 shows percentage of consultations by gender and age wise in health events in over all diseases, male to female patients’ ratio reported was **47.4%** or **7,704** cases and **52.6%** or **8,563** cases respectively
- Figure 13 shows weekly percentage trend of ARI, OAD, MAL and PUO from week 1 to 40, 2012.
- This week, 54 health facilities reported from 3 agencies to eDEWS with a total of **16,267** patients’ consultations.
- Acute Respiratory Tract Infection (ARI) 2,127 cases reported were showing 1% increase in percentage as compared to week 39 patients’ visits and accounted for 13.1% of the total consultations.
- Other Acute Diarrhea (OAD) 1,669 cases or 10.3% were showing 0.1% increase in percentage as compared to week 39 and suspected Malaria (Mal) 1,272 cases or 8% were shared.
- Pyrexia of Unknown Origin (PUO) shared 386 cases or 2.4% which shows 0.2% decrease in percentage as compared to previous week, suspected Typhoid Fever (TF) 93 cases or 0.6% and Scabies 358 cases or 2.2% were reported.

Figure-15: ARI,OAD, MAL and PUO percentage situation of Federal Administered Treaty Agency (FATA) in last three weeks



The above figure 14 shows ARI, OAD, MAL and PUO percentage situation in FATA three agencies. During week 40, 2012 high percentage of ARI consultations were reported as compared to other diseases. In this week high percentage of ARI and Other Acute Diarrhoea consultations were reported from Mohmand as compared to Khyber and Bajaur agency. In this week ARI 16% or 436 cases, 13% or 778 cases and 12% or 913 cases were shared respectively from Mohmand, Bajaur and Khyber agencies. Similarly OAD 16% or 425 cases, 10% or 741 cases and 8% or 503 cases were shared respectively from Mohmand, Khyber and Bajaur agencies. Pyrexia Unknown Origin (PUO) cases percentage were reported 5% or 131 cases, 3% or 190 cases and 1% or 65 cases respectively from Mohmand, Bajaur and Khyber agencies. Suspected Malaria were shared 9% or 536 cases from Bajaur, 8% or 219 cases from Mohmand and 7% or 517 cases from Khyber agency.

Table-5: Malaria Slides/RDT examination report of FATA agency wise in week 40, 2012

Agency	Slides / RDT examined	P. Falciparum	P. Vivax	P. Mixed	Total +Ve	Slide Positivity Rate (SPR)	Falciparum Rate (FR)	Vivax Rate	Mixed Rate
Bajaur	458	8	79	1	88	19.2	10.2	89.8	1.1
Khyber	487	2	100	0	102	20.9	2.0	98.0	0.0
Mohmand	233	25	86	4	115	49.4	25.2	74.8	3.5
Total	1,178	35	265	5	305	25.9	13.1	86.9	1.6

A total of **1,178** slides were examined for Malaria in this week. Out of which **305** slides were positive and accounted for SPR is **26%** including **13.1%** (40 slides) for Falciparum Ratio, **87%** (265 slides) for Vivax and **1.6%** (5 slides) for Mixed.

Current week's Alert/Outbreak in FATA:

➤ A total of 10 alerts (4 for suspected Measles, 3 for Cutaneous Leishmaniasis (CL) while 1 each for Mumps, Neonatal Tetanus (NNT) and Tetanus) were reported and responded in this week.

S. No.	Date Investigated	Suspected Disease	Agency	Location	<5 M	>5 M	<5 F	>5 F	Sample	Positive	Cases	Death
1	04-Oct-12	C. Leishmaniasis	Khyber Agency	Village Sheen Koh, UC Kajori, Tehsil Bara	1	0	0	0	0	r	1	0
2	06-Oct-12	Measles	Khyber Agency	Village Zarmadar, UC Gagra, Tehsil Landikotal	1	0	3	0	0	r	4	0
3	04-Oct-12	C. Leishmaniasis	Bajaur Agency	village Lara Banda, Tehsil Khar	0	1	0	0	0	r	1	0
4	04-Oct-12	C. Leishmaniasis	Bajaur Agency	village Lara Banda, Tehsil Khar	0	1	0	0	0	r	1	0
5	01-Oct-12	Mumps	Bajaur Agency	village lagharai, Tehsil Mamoond	1	0	0	0	0	r	1	0
6	01-Oct-12	NNT	Bajaur Agency	village Dabar of Tehsil Mamoond	0	0	1	0	0	r	1	0
7	01-Oct-12	Tetanus	Bajaur Agency	village Dherakai of Tehsil Salarzai	0	0	1	0	0	r	1	0
8	02-Oct-12	Measles	Bajaur Agency	village Pathak of Tehsil Khar	1	0	0	0	1	r	1	0
9	03-Oct-12	Measles	Bajaur Agency	village Dag qala of Tehsil Khar	0	0	1	0	1	r	1	0
10	03-Oct-12	Measles	Bajaur Agency	village Hasham-Charmang, Tehsil Nawagai	0	0	1	0	1	r	1	0

Figure 16: Total number of alerts including outbreaks situation in KP and FATA through eDEWS System (Week 40, 2012)

