

Disease situation in Jalozai IDP's camp, Khyber Pakhtunkhwa Week 52 (December 23rd to 29th, 2012)

Highlights:

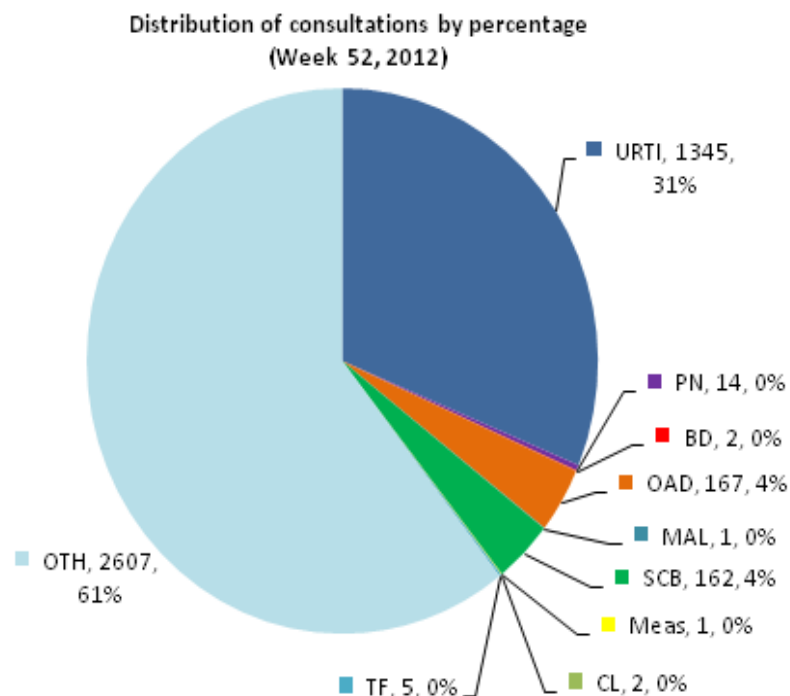
- ❖ **Acute Respiratory tract infections (ARI)** accounted for **32% or 1,359 cases** of the total patients (**4,306** consultations) in all age groups and is showing 0.2% decrease in percentage of ARI patient visits as compared to week 51, 2012.
- ❖ **Other Acute Diarrhea (OAD)** accounted for **4% or 167 cases** of the total patient consultations in all age groups by showing 0.2% increase in percentage as compared to OAD patient visits in previous week.
- ❖ Confirmed **Malaria (MAL)** shared **<1% or 1 case** of all patient visits in current week.
- ❖ **Skin Infections (SCB)** reported as **4% or 162 cases** of the total patient consultations.
- ❖ Total of **3 alerts' cases** including 2 for Cutaneous Leishmaniasis and 1 for suspected Measles were reported in this week.



Weekly disease consultations in Jalozai IDPs camp:-

Figure 1: Distribution of consultations by percentage

Table 1: Cases reported from Jalozai IDPs camp



Disease name	Week-52	
	Cases	%
Upper Respiratory Tract Infection (URTI)	1,345	31.2
Pneumonia (PN)	14	0.3
Bloody Diarrhea (BD)	2	<1
Other Acute Diarrhea (OAD)	167	4
Acute Watery Diarrhea (AWD)	-	-
Confirmed Malaria (MAL)	1	<1
Scabies (SCB)	162	4
Chronic Viral Hepatitis (CVH)	-	-
Suspected Measles (Meas)	1	<1
Pyrexia Unknown Origin (PUO)	-	-
Cutaneous Leishmaniasis (CL)	2	<1
Suspected Typhoid Fever (TF)	5	0.1
Other diseases (OTH)	2,607	61
Total consultations	4,306	

A total **4,306** consultations have been reported through DEWS during week 52 (December 23 to 29, 2012) (table 1). **Seven (7) health static units** (Merlin International 4, CAMP Organization 2 and FATA health facility 1) from Jalozai IDPs camp shared daily/weekly disease surveillance data through DEWS.

Major causes for seeking health care percentage trend in Jalozai IDPs camp:-

Figure 2: Weekly disease percentage trend in Jalozai IDPs camp (Week 14 to 52, 2012):

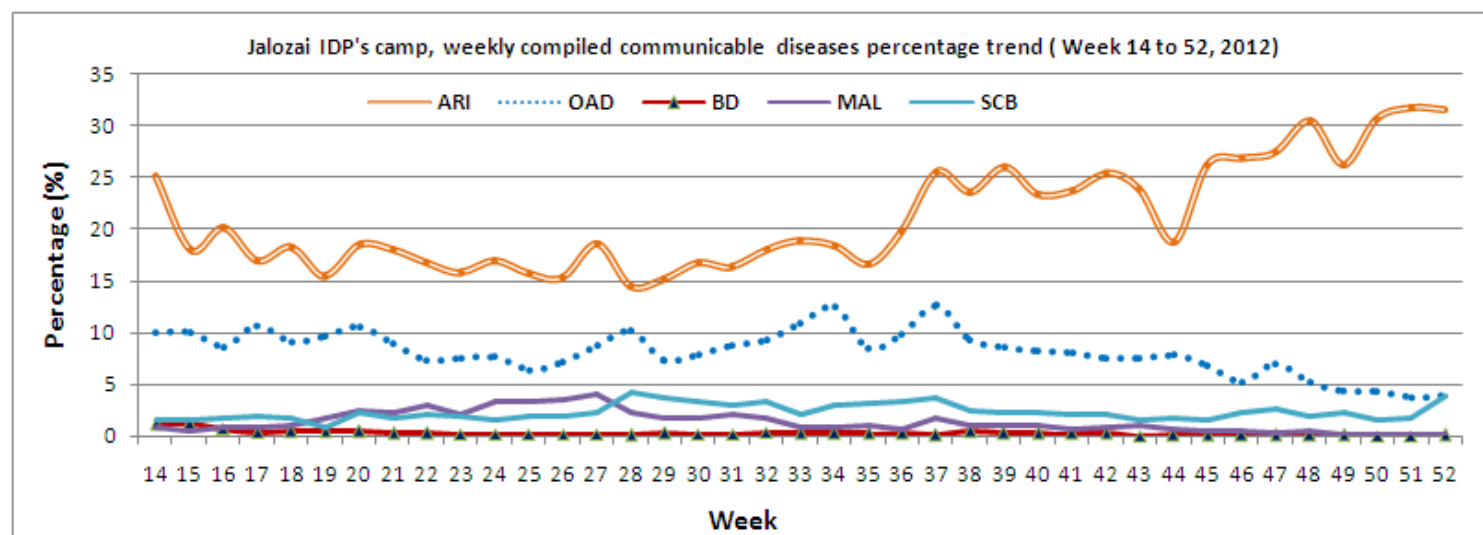


Figure 2 shows percentage trend of major communicable diseases in Jalozai IDPs camp. In this week ARI shared 32% or 1,359 cases is showing 0.2% decrease and OAD shared 4% or 167 cases is showing 0.2% increase in percentage.

Total consultations reported from all health units in Jalozai IDPs camp:-

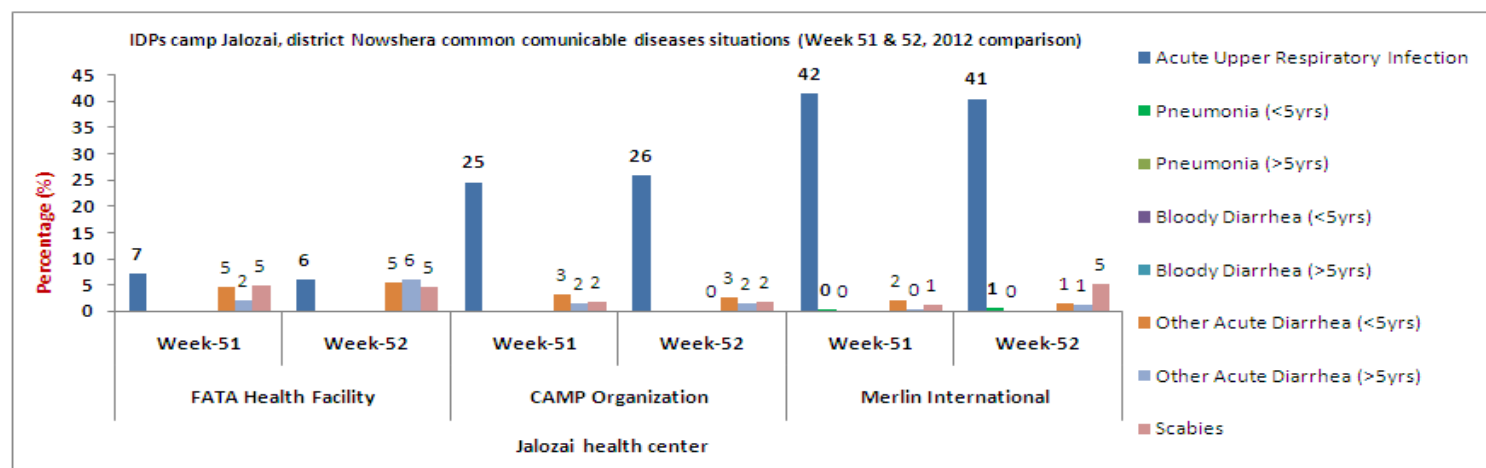
Communicable diseases	CAMP (2 units)				Merlin (4 units)				FATA Health facility (1 unit)			
	Wk-51 (Cases)	%	Wk-52 (Cases)	%	Wk-51 (Cases)	%	Wk-52 (Cases)	%	Wk-51 (Cases)	%	Wk-52 (Cases)	%
Acute Upper Respiratory Infection	465	24.6	397	26	1,115	41.5	918	40.5	39	7	30	6
Pneumonia (<5yrs)	-	-	-	-	7	0.3	12	0.5	-	-	-	-
Pneumonia (>5yrs)	-	-	-	-	3	0.1	2	0.1	-	-	-	-
Bloody Diarrhea (<5yrs)	-	-	-	-	-	-	-	-	-	-	-	-
Bloody Diarrhea (>5yrs)	-	-	2	0.1	-	-	-	-	-	-	-	-
Other Acute Diarrhea (<5yrs)	60	3.2	39	2.5	56	2.1	31	1.4	25	4.5	27	5.3
Other Acute Diarrhea (>5yrs)	28	1.5	23	1.5	10	0.4	16	0.7	12	2.1	31	6.1
Suspected Measles (Meas)	-	-	1	<1	-	-	-	-	-	-	-	-
Confirmed Malaria	1	0.1	-	-	3	0.1	1	<1	-	-	-	-
Cutaneous Leishmaniasis (CL)	-	-	-	-	-	-	2	0.1	-	-	-	-
Pyrexia Unknown Origin (PUO)	-	-	-	-	-	-	-	-	-	-	-	-
Scabies (SCB)	31	1.6	26	2	30	1.1	113	5	27	4.8	23	4.5
Suspected Typhoid Fever (TF)	-	-	5	0.3	2	0.1	-	-	-	-	-	-
Chronic Viral Hepatitis (CVH)	-	-	-	-	-	-	-	-	-	-	-	-
Other diseases	1,304	69	1,037	68	1,458	54.3	1,173	51.7	456	81.6	397	78.1
Total Consultations	1,889		1,530		2,684		2,268		559		508	

A comparison of the ARI consultations by health units in Jalozai camp on week 52 (December 23 to 29) shows that high proportion of ARI cases are reported accounted for 32% (URTI 31.2% and Pneumonia 0.3%), or 1,359 cases

followed by Other Acute Diarrhea 4% or 167 cases. Confirmed Malaria comprised <1% or 14 case in consolidated data out of total consultations.

Disease trends by percentage in IDPs Jalozai camp:-

Figure 3: Most common communicable diseases situation in Jalozai IDPs camp as percentage of consultations (Week 51 and 52 comparison)



The above figure 3 shows major health causes percentage situation in Jalozai IDPs camp. During week 52 high percentages of ARI consultations were reported from Merlin health units as compared to CAMP health units and FATA health facility. Similarly high percentages of OAD consultations were reported from FATA health unit as compared to CAMP and Merlin health facilities. In this week ARI 41% and OAD 2.1% were shared from Merlin health facilities, ARI 26% and OAD 4.1% were from CAMP health units, also ARI 6% and OAD 11% were from FATA health center. Total of 3 alerts' cases including 1 suspected Measles from CAMP Organization and 2 Cutaneous Leishmaniasis from Merlin health posts were reported in this week.

Distribution of consultations percentage by age and gender

Figure 4: Age and gender wise segregated disease situation in Jalozai IDPs camp, week 52

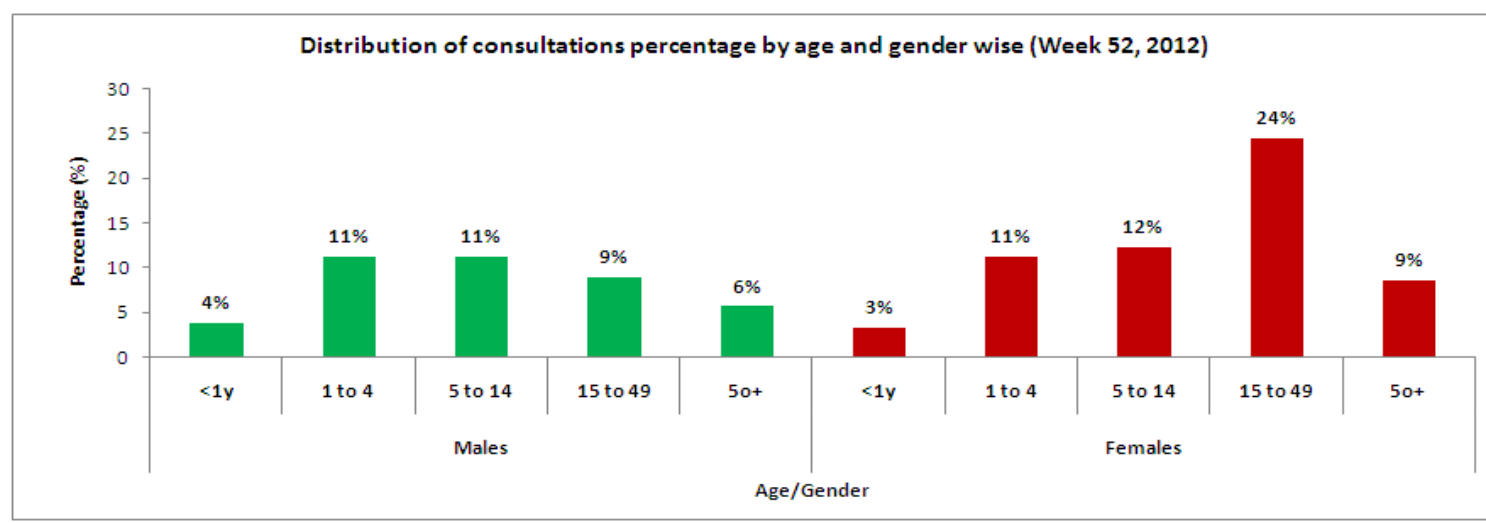


Figure 4 shows comparison of the consultations by gender and age wise in health events in over all diseases, male to female patients' ratio reported was **40.4% or 1,738 cases** and **59.6% or 2,568 cases** respectively.

Immunization in Jalozai IDPs camp:-

Table 3 (a & b): Immunization (Jalozai IDP's Camp, Nowshera) from 23rd to 29th December, 2012

a) Routine vaccination of Jalozai IDPs camp (Week 52):

EPI	Routine Vaccination										OPV U5 yrs (Other than Routine)*	Women	TT1	TT2	TT3	TT4	TT5	Total
	Children	BCG	Polio			PENTA			Measles	Fully Immunized								
			Birth	1	2	3	1	2										
<1 year	61	51	40	38	36	40	38	36	24	27	22	Pregnant	32	28	3	1	1	1,235
>=1 year	3	0	4	11	11	4	11	11	22	33	611	Non-Pregnant (15-49y)	8	13	12	3	0	
Total	64	51	44	49	47	44	49	47	46	60	633	-	40	41	15	4	1	

b) Routine vaccination of Jalozai IDPs camp (Consolidated data of all vaccination points in Jalozai IDP camp):

EPI	Routine Vaccination										OPV U5 yrs (Other than Routine)*	Women	TT1	TT2	TT3	TT4	TT5	Total
	Children	BCG	Polio			PENTA			Measles	Fully Immunized								
			Birth	1	2	3	1	2										
<1 year	2,716	1,822	3,102	2,404	2,258	3,140	2,429	2,262	2,686	1,806	3,695	Pregnant	3,031	1,844	355	67	12	134,797
>=1 year	1,458	0	1,594	883	858	1,611	891	862	3,648	798	78,080	Non-Pregnant (15-49y)	7,501	1,188	1,147	541	108	
Total	4,174	1,822	4,696	3,287	3,116	4,751	3,320	3,124	6,334	2,604	81,775	-	10,532	3,032	1,502	608	120	

*OPV dosage received during OPD and not the ones in the routine

Laboratory test conducted in Jalozai IDPs camp:-

Table 4 (a & b): Laboratory test situation in IDPs Jalozai Camp, Nowshera

a) laboratory test situation data in Jalozai IDPs camp (December 23 to 29, 2012):

Test Name	MP (microscopy)	MP (RDT)*	HB%	HBS	HCV	B.GROUP	Typhoid	B.SUGAR	ESR	LEISHMANIASIS	PREGNENCIES	URINE ALBUMIN	URINE SUGAR	URINE R/E	STOOL R/E	BILIRUBIN	Syphilis	SPUTUM FOR AFB	TOTAL
+Ve	0	6	13	1	0	-	0	14	-	3	37	3	2	39	1	14	0	0	-
-Ve	18	35	61	57	60	-	1	41	-	2	21	88	87	58	5	76	52	0	-
Total	18	41	74	58	60	64	1	55	0	5	58	91	89	97	6	90	52	0	818

* Malaria slides /RDT examined report

Health Centers	Slides/RDT examined	P. Falciparum	P. Vivax	Mixed	Total +ve	Falciparum + Mixed	Slide Positivity Rate (SPR)	Falciparum Rate
Merlin	21	0	1	0	1	0	4.8	0
CAMP	18	0	0	0	0	0	0.0	0
Total	39	0	1	0	1	0	2.6	0

A total of 39 slides were examined for Malaria in this week. Out of total slides examined 1 (2.6%) were positive; out of which P. Falciparum 0 (0%), P. Vivax 1 (2.6%) and Mixed 0 (0%) were shared.

b) laboratory test situation data in Jalozai IDPs camp (Consolidated):

Test Name	MP (microscopy)	MP (RDT)*	HB% ++	HBS	HCV	B.GROUP	Typhoid	B.SUGAR	ESR	LEISHMANIASIS	PREGNENCIES	URINE ALBUMIN	URINE SUGAR	URINE R/E	STOOL R/E	BILIRUBIN	Syphilis	SPUTUM FOR AFB	TOTAL
+Ve	540	750	543	68	60	-	31	235	-	19	938	169	31	662	101	62	8	0	-
-Ve	1,137	1,612	1,904	2,064	2,021	-	111	1,761	-	70	742	1,848	1,987	1,587	138	1,728	1,828	2	-
Total	1,677	2,362	2,447	2,132	2,081	2,000	142	1,996	24	89	1,680	2,017	2,018	2,249	239	1,790	1,836	2	26,781

Nutrition situation in Jalozai IDPs camp:-

Table 5: Nutrition situation in IDPs Jalozai camp Nowshera

➤ Nutrition situation data (Week 52):

CMAM Finding	No of Children screened (6-59 months)		MAM MUAC < 12.5-11.5 cm		SAM MUAC < 11.5cm		Malnutrition at Risk Borderline MUAC ≤13.5-12.5 cm		No Of PLW Screened		Malnourish PLW	
	M	F	M	F	M	F	M	F	P	L	P. MUAC<21	L. MUAC<21
Number of screened	196	212	10	17	2	3	21	49	88	47	37	15
Total	408		27		5		70		135		52	

➤ Nutrition situation data (Consolidated):

CMAM Finding	No of Children screened (6-59 months)		MAM MUAC < 12.5-11.5 cm		SAM MUAC < 11.5cm		Malnutrition at Risk Borderline MUAC ≤13.5-12.5 cm		No Of PLW Screened		Malnourish PLW	
	M	F	M	F	M	F	M	F	P	L	P. MUAC<21	L. MUAC<21
Number of screened	6,008	6,191	519	746	131	183	730	930	2,533	3,663	402	289
Total	12,199		1,265		314		1,660		6,196		691	

Health Education situation in Jalojai IDPs camp:-

Table 6: Health education situation in IDP's Jalojai camp Nowshera

Data of health education situation (Week 52, 2012)					Data of health education situation (Consolidated)				
Sessions	Number of Sessions	Total participants			Sessions	Number of Sessions	Total participants		
		Males	Females	Total			Males	Females	Total
Total Sessions	513	1,408	3,301	4,709	Total Sessions	20,332	61,736	104,757	166,493

MCH in Jalojai IDPs camp:-

Figure 5: MCH situation in IDP's Jalojai camp Nowshera (December 23 to 29, 2012)

