

## Disease situation in Jalozai IDP's camp, Khyber Pakhtunkhwa Week 23 (Jun 03<sup>rd</sup> to 09<sup>th</sup>, 2012)

### Highlights:

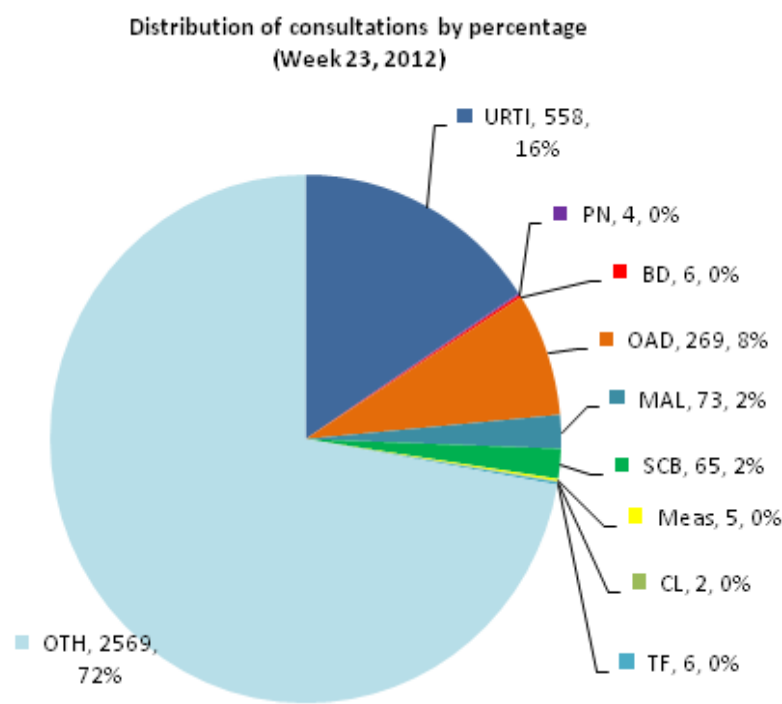
- ❖ **Acute Respiratory tract infections (ARI)** accounted for **16% or 562 cases** of the total patients (3,557 consultations) in all age groups and is showing 1% decrease in percentage of ARI patient visits as compared to week 22, 2012.
- ❖ **Other Acute Diarrhea (OAD)** accounted for **8% or 269 cases** of the total patient consultations in all age groups by showing 0.3% increase in percentage as compared to OAD patient visits in week 22, 2012.
- ❖ **Bloody Diarrhea (BD)** shared **0.2% or 6 cases** and also suspected **Malaria (MAL)** shared **2.1% or 73 cases** of all patient visits in week 23.
- ❖ **Skin Infections (SCB)** reported as **2% or 65 cases** of the total patient consultations.
- ❖ A total of **6 alerts** including 1 for Cutaneous Leishmaniasis and 5 for Measles alerts were reported and responded in this week.



### Daily disease consultations in Jalozai IDPs camp:-

Figure 1: Distribution of consultations by percentage

Table 1: Cases reported from Jalozai IDPs camp



| Disease name                             | Week-23      |      |
|--|--------------|------|
|  | Cases        | %    |
| Upper Respiratory Tract Infection (URTI) | 558          | 15.7 |
| Pneumonia (PN)                           | 4            | 0.1  |
| Bloody Diarrhea (BD)                     | 6            | 0.2  |
| Other Acute Diarrhea (OAD)               | 269          | 7.6  |
| Acute Watery Diarrhea (AWD)              | -            | -    |
| Suspected Malaria (MAL)                  | 73           | 2.1  |
| Scabies (SCB)                            | 65           | 2    |
| Chronic Viral Hepatitis (CVH)            | -            | -    |
| Suspected Measles (Meas)                 | 5            | 0.1  |
| Acute Flaccid Paralysis                  | -            | -    |
| Cutaneous Leishmaniasis (CL)             | 2            | 0.1  |
| Suspected Typhoid Fever (TF)             | 6            | 0.2  |
| Other diseases (OTH)                     | 2,569        | 72   |
| <b>Total consultations</b>               | <b>3,557</b> |      |

A total **3,557** consultations have been reported through DEWS during week 23 (Jun 03<sup>rd</sup> to 09<sup>th</sup>, 2012) (table 1). **Six (6) health static units** (Merlin International 4 and CAMP Organization 2) from Jalozai IDPs camp shared daily/weekly disease surveillance data through DEWS.

## Major causes for seeking health care percentage trend in Jalojai IDPs camp:-

Figure 2: Weekly disease percentage trend in Jalojai IDPs camp (Week 13 to 23, 2012):

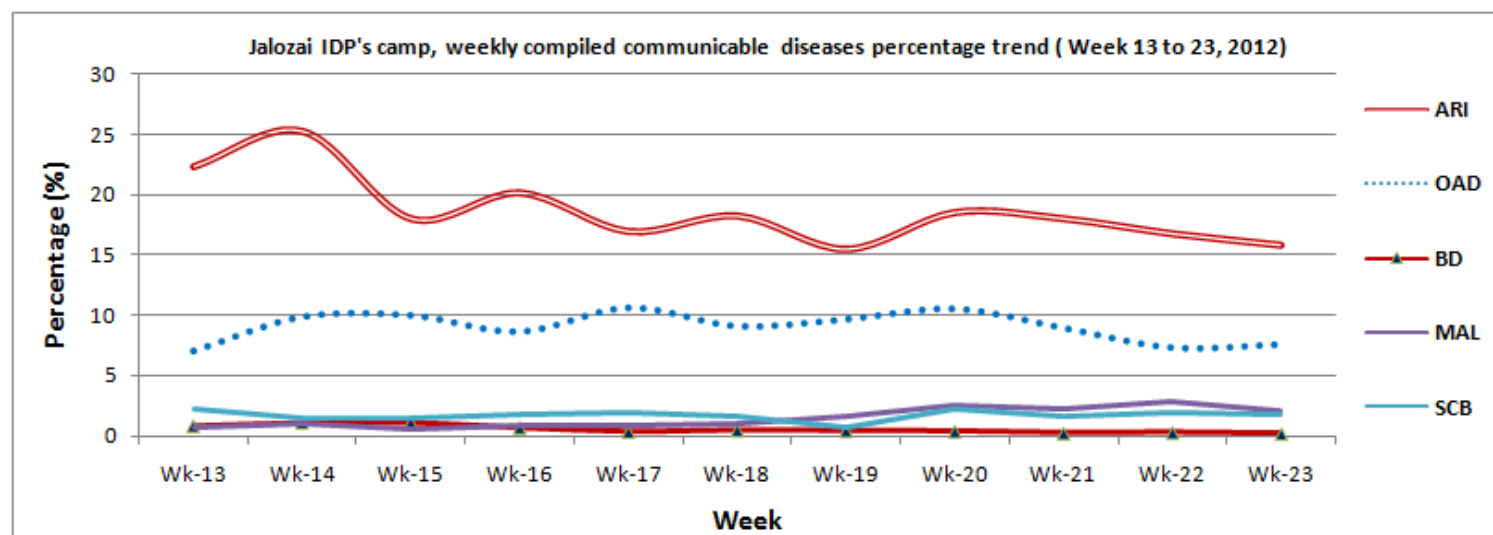


Figure 2 shows percentage trend of major communicable diseases in Jalojai IDPs camp. In this week ARI shared 16% or 562 cases is showing 1% decrease and OAD shared 8% or 269 cases is showing 0.3% increase in percentage.

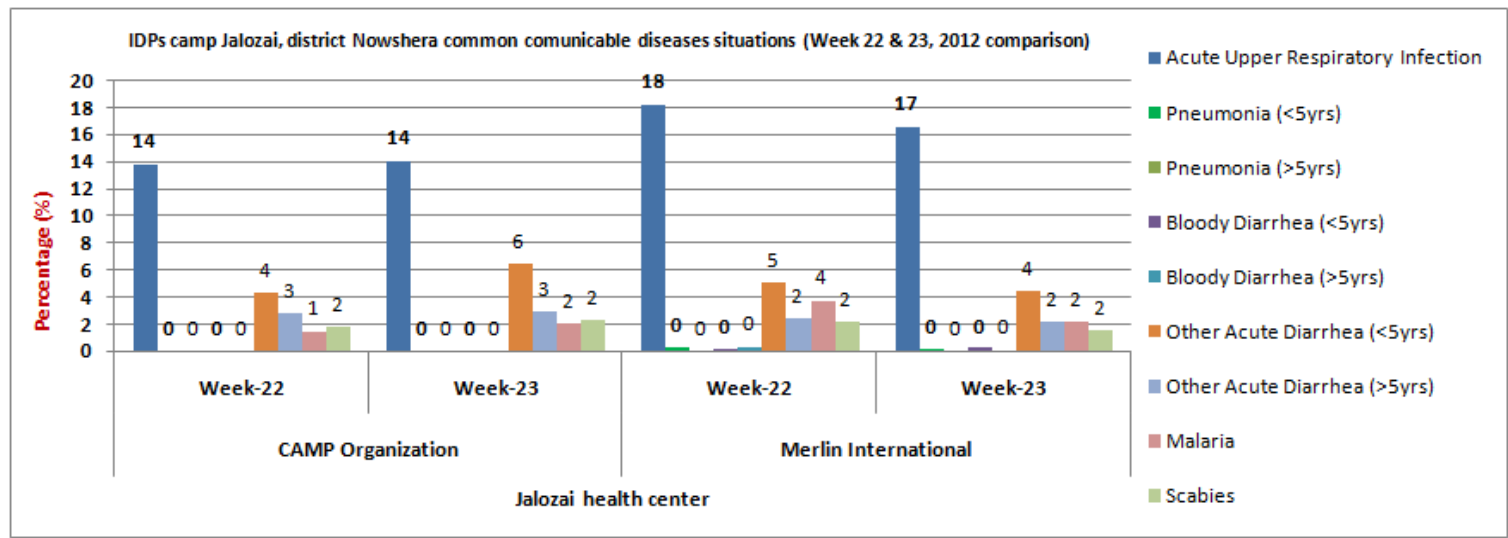
## Total consultations reported from all health units in Jalojai IDPs camp:-

| Communicable diseases             | CAMP<br>(2 units) |     |                  |     | Merlin<br>(4 units) |      |                  |      |
|-----------------------------------|-------------------|-----|------------------|-----|---------------------|------|------------------|------|
|                                   | Wk-22<br>(Cases)  | %   | Wk-23<br>(Cases) | %   | Wk-22<br>(Cases)    | %    | Wk-23<br>(Cases) | %    |
| Acute Upper Respiratory Infection | 171               | 14  | 186              | 14  | 373                 | 18.3 | 372              | 16.6 |
| Pneumonia (<5yrs)                 | -                 | -   | -                | -   | 5                   | 0.2  | 4                | 0.2  |
| Pneumonia (>5yrs)                 | -                 | -   | -                | -   | -                   | -    | -                | -    |
| Bloody Diarrhea (<5yrs)           | -                 | -   | -                | -   | 2                   | 0.1  | 4                | 0.2  |
| Bloody Diarrhea (>5yrs)           | -                 | -   | -                | -   | 7                   | 0.3  | 2                | 0.1  |
| Other Acute Diarrhea (<5yrs)      | 53                | 4.3 | 85               | 6.4 | 104                 | 5.1  | 98               | 4.4  |
| Other Acute Diarrhea (>5yrs)      | 34                | 2.7 | 38               | 3   | 48                  | 2.4  | 48               | 2.1  |
| Acute Watery Diarrhea (>5yrs)     | 1                 | 0.1 | -                | -   | -                   | -    | -                | -    |
| Suspected Malaria                 | 18                | 1.5 | 26               | 2   | 76                  | 3.7  | 47               | 2.1  |
| Suspected Measles (Meas)          | -                 | -   | 1                | 0.1 | -                   | -    | 4                | 0.2  |
| Acute Flaccid Paralysis (AFP)     | 1                 | 0.1 | -                | -   | -                   | -    | -                | -    |
| Scabies (SCB)                     | 22                | 3   | 30               | 2.3 | 43                  | 2.1  | 35               | 1.6  |
| Suspected Typhoid Fever (TF)      | 6                 | 0.5 | 6                | 0.5 | 2                   | 0.1  | -                | -    |
| Cutaneous Leishmaniasis (CL)      | -                 | -   | -                | -   | -                   | -    | 2                | 0.1  |
| Other diseases                    | 932               | 75  | 946              | 72  | 1,380               | 67.5 | 1,623            | 72.5 |
| <b>Total Consultations</b>        | <b>1,238</b>      |     | <b>1,318</b>     |     | <b>2,040</b>        |      | <b>2,239</b>     |      |

A comparison of the ARI consultations by health units in Jalojai camp on week 23 (Jun 3 to 9, 2012) shows that high proportion of ARI cases are reported accounted for 16% (URTI 15.7% and Pneumonia 0.1%), or 562 cases followed by Other Acute Diarrhea 8% or 269 cases. Bloody diarrhea comprised 0.2% or 6 cases in consolidated data out of total consultations.

## Disease trends by percentage in IDPs Jalojai camp:-

Figure 3: Most common communicable diseases situation in Jalojai IDPs camp as percentage of consultations (Week 22 and 23 comparison)



The above figure 3 shows major health causes percentage situation in Jalojai IDPs camp. During week 23, 2012 high percentage of OAD consultations were reported from CAMP health centers as compared to Merlin health units. Similarly ARI consultations were reported from Merlin as compared to CAMP health posts. In this week OAD 9% and ARI 14% were shared from CAMP static units and also OAD 6% and ARI 17% from Merlin health centers. A total of 6 alerts including 1 for Cutaneous Leishmaniasis (from Merlin health post) and 5 for Measles alerts (1 from CAMP and 4 from Merlin health posts) were reported and responded in this week.

## Distribution of consultations percentage by age and gender

Figure 4: Age and gender wise segregated disease situation in Jalojai IDPs camp, week 23 (Jun 03<sup>rd</sup> to 09<sup>th</sup>, 2012)

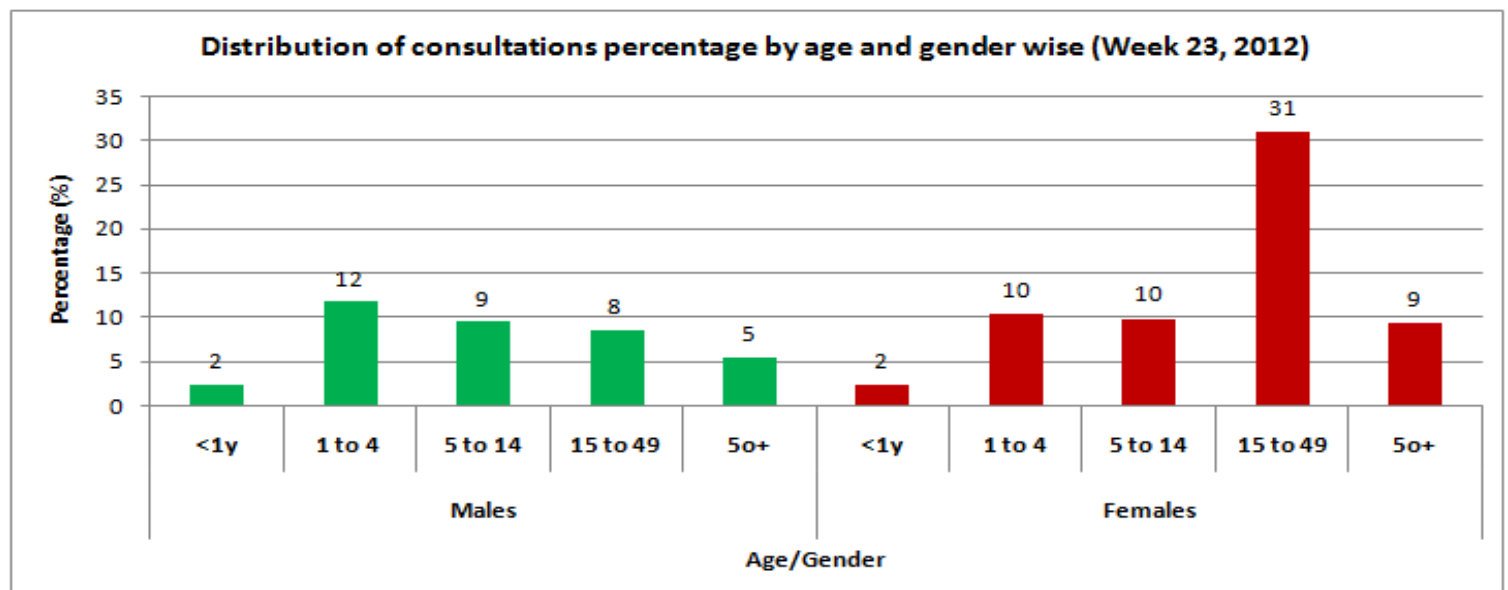


Figure 4 shows comparison of the consultations by gender and age wise in health events in over all diseases, male to female patients' ratio reported was 37% or 1,322 cases and 63% or 2,235 cases respectively.

## Immunization in Jalojai IDPs camp:-

Table 3 (a & b): Immunization (Jalojai IDP's Camp, Nowshera) in week 23 (Jun 03<sup>rd</sup> to 09<sup>th</sup>, 2012)

### a) Routine vaccination of Jalojai IDPs camp (Week 23):

| EPI          | Routine Vaccination |           |           |           |           |           |            |           |           |                 | OPV U5 yrs | Women                 | TT1       | TT2       | TT3       | TT4      | TT5      | Total |
|--------------|---------------------|-----------|-----------|-----------|-----------|-----------|------------|-----------|-----------|-----------------|------------|-----------------------|-----------|-----------|-----------|----------|----------|-------|
|              | Children            | BCG       | Polio     |           |           | PENTA     |            |           | Measles   | Fully Immunized |            |                       |           |           |           |          |          |       |
|              |                     |           | Birth     | 1         | 2         | 3         | 1          | 2         |           |                 |            |                       |           |           |           |          |          |       |
| <1 year      | 64                  | 39        | 59        | 63        | 57        | 59        | 63         | 57        | 46        | 38              | 0          | Pregnant              | 45        | 47        | 4         | 1        | 0        | 972   |
| >=1 year     | 25                  | 0         | 24        | 44        | 27        | 24        | 44         | 27        | 43        | 23              | 30         | Non-Pregnant (15-49y) | 28        | 31        | 7         | 1        | 1        |       |
| <b>Total</b> | <b>89</b>           | <b>39</b> | <b>64</b> | <b>90</b> | <b>71</b> | <b>83</b> | <b>107</b> | <b>84</b> | <b>89</b> | <b>61</b>       | <b>30</b>  |                       | <b>73</b> | <b>78</b> | <b>11</b> | <b>2</b> | <b>1</b> |       |

### b) Routine vaccination of Jalojai IDPs camp (Consolidated data of all vaccination points in Jalojai IDP camp):

| EPI          | Routine Vaccination |            |              |              |            |              |              |            |              |                 | OPV U5 yrs    | Women                 | TT1          | TT2        | TT3        | TT4        | TT5       | Total  |
|--------------|---------------------|------------|--------------|--------------|------------|--------------|--------------|------------|--------------|-----------------|---------------|-----------------------|--------------|------------|------------|------------|-----------|--------|
|              | Children            | BCG        | Polio        |              |            | PENTA        |              |            | Measles      | Fully Immunized |               |                       |              |            |            |            |           |        |
|              |                     |            | Birth        | 1            | 2          | 3            | 1            | 2          |              |                 |               |                       |              |            |            |            |           |        |
| <1 year      | 968                 | 613        | 1,127        | 752          | 631        | 1,166        | 768          | 636        | 931          | 549             | 2,343         | Pregnant              | 1,255        | 558        | 64         | 16         | 3         | 64,354 |
| >=1 year     | 995                 | 0          | 964          | 416          | 347        | 964          | 416          | 348        | 2,076        | 326             | 40,137        | Non-Pregnant (15-49y) | 3,934        | 422        | 573        | 282        | 49        |        |
| <b>Total</b> | <b>1,963</b>        | <b>613</b> | <b>1,976</b> | <b>1,061</b> | <b>925</b> | <b>2,130</b> | <b>1,184</b> | <b>984</b> | <b>3,007</b> | <b>875</b>      | <b>42,480</b> | -                     | <b>5,189</b> | <b>980</b> | <b>637</b> | <b>298</b> | <b>52</b> |        |

## Laboratory test conducted in Jalojai IDPs camp:-

Table 4 (a & b): Laboratory test situation in IDPs Jalojai Camp, Nowshera (Week 23, 2012)

### a) laboratory test situation data in Jalojai IDPs camp (Jun 03<sup>rd</sup> to 09<sup>th</sup>, 2012):

| Test Name    | MP (microscopy) | MP (RDT)* | HB%        | HBS       | HCV       | B.GROUP   | B.SUGAR  | ESR      | LEISHMANIASIS | PREGNENCIES | URINE ALBUMIN | URINE SUGAR | URINE R/E | STOOL R/E | BILIRUBIN | Syphilis  | SPUTUM FOR AFB | TOTAL      |
|--------------|-----------------|-----------|------------|-----------|-----------|-----------|----------|----------|---------------|-------------|---------------|-------------|-----------|-----------|-----------|-----------|----------------|------------|
| <b>+Ve</b>   | 21              | 38        | 47         | 6         | 4         | -         | 1        | -        | 0             | 47          | 4             | 4           | 29        | 10        | 0         | 0         | 0              | -          |
| <b>-Ve</b>   | 35              | 23        | 55         | 91        | 93        | -         | 2        | -        | 3             | 27          | 41            | 41          | 37        | 3         | 43        | 57        | 0              | -          |
| <b>Total</b> | <b>56</b>       | <b>61</b> | <b>102</b> | <b>97</b> | <b>97</b> | <b>76</b> | <b>3</b> | <b>0</b> | <b>3</b>      | <b>74</b>   | <b>45</b>     | <b>45</b>   | <b>66</b> | <b>13</b> | <b>43</b> | <b>57</b> | <b>0</b>       | <b>838</b> |

**b) laboratory test situation data in Jalozai IDPs camp (Consolidated):**

| Test Name    | MP (microscopy) | MP (RDT)* | HB% ++ | HBS | HCV | B.GROUP | B.SUGAR | ESR | LEISHMANIASIS | PREGNENCIES | URINE ALBUMIN | URINE SUGAR | URINE R/E | STOOL R/E | BILIRUBIN | Syphilis | SPUTUM FOR AFB | TOTAL        |
|--------------|-----------------|-----------|--------|-----|-----|---------|---------|-----|---------------|-------------|---------------|-------------|-----------|-----------|-----------|----------|----------------|--------------|
| <b>+Ve</b>   | 74              | 206       | 172    | 19  | 24  | -       | 56      | -   | 0             | 280         | 73            | 14          | 196       | 37        | 1         | 3        | 0              | -            |
| <b>-Ve</b>   | 271             | 304       | 486    | 535 | 444 | -       | 289     | -   | 24            | 183         | 749           | 811         | 675       | 58        | 690       | 452      | 0              | -            |
| <b>Total</b> | 345             | 510       | 658    | 554 | 468 | 488     | 345     | 13  | 24            | 463         | 822           | 825         | 871       | 95        | 691       | 455      | 0              | <b>7,627</b> |

**Nutrition situation in Jalozai IDPs camp:-**

Table 5: Nutrition situation in IDPs Jalozai camp Nowshera

➤ **Nutrition situation data (Week 23):**

| CMAM Finding       | No of Children screened (6-59 months) |     | MAM MUAC < 12.5-11.5 cm |    | SAM MUAC < 11.5cm |   | Malnutrition at Risk Borderline MUAC ≤13.5-12.5 cm |    | No Of PLW Screened |    | Malnourish PLW |            |
|--------------------|---------------------------------------|-----|-------------------------|----|-------------------|---|--|----|--------------------|----|----------------|------------|
|                    | M                                     | F   | M                       | F  | M                 | F | M  | F  | P                  | L  | P. MUAC<21     | L. MUAC<21 |
| Number of screened | 116                                   | 112 | 4                       | 11 | 2                 | 1 | 11   | 15 | 55                 | 52 | 2              | 1          |
| <b>Total</b>       | <b>228</b>                            |     | <b>15</b>               |    | <b>3</b>          |   | <b>26</b>  |    | <b>107</b>         |    | <b>3</b>       |            |

➤ **Nutrition situation data (Consolidated):**

| CMAM Finding       | No of Children screened (6-59 months) |       | MAM MUAC < 12.5-11.5 cm |     | SAM MUAC < 11.5cm |    | Malnutrition at Risk Borderline MUAC ≤13.5-12.5 cm |     | No Of PLW Screened |       | Malnourish PLW |            |
|--------------------|---------------------------------------|-------|-------------------------|-----|-------------------|----|--|-----|--------------------|-------|----------------|------------|
|                    | M                                     | F     | M                       | F   | M                 | F  | M  | F   | P                  | L     | P. MUAC<21     | L. MUAC<21 |
| Number of screened | 2,780                                 | 2,794 | 275                     | 340 | 70                | 96 | 319  | 371 | 1,048              | 2,585 | 171            | 199        |
| <b>Total</b>       | <b>5,574</b>                          |       | <b>615</b>              |     | <b>166</b>        |    | <b>690</b>   |     | <b>3,633</b>       |       | <b>370</b>     |            |

**Health Education situation in Jalozai IDPs camp:-**

Table 6: Health education situation in IDP's Jalozai camp Nowshera

| ➤ Data of health education situation (Week 23, 2012) |                    |                    |         |       | ➤ Data of health education situation (Consolidated) |                    |                    |         |        |
|--|--------------------|--------------------|---------|-------|---|--------------------|--------------------|---------|--------|
| Sessions   | Number of Sessions | Total participants |         |       | Sessions  | Number of Sessions | Total participants |         |        |
|  |                    | Males              | Females | Total |   |                    | Males              | Females | Total  |
| Total Sessions                                       | 599                | 1,594              | 2,702   | 4,895 | Total Sessions                                      | 3,425              | 8,142              | 23,270  | 32,011 |

## MCH in Jalozai IDPs camp:-

Figure 5: MCH situation in IDP's Jalozai camp Nowshera (Jun 03<sup>rd</sup> to 09<sup>th</sup>, 2012 )

