

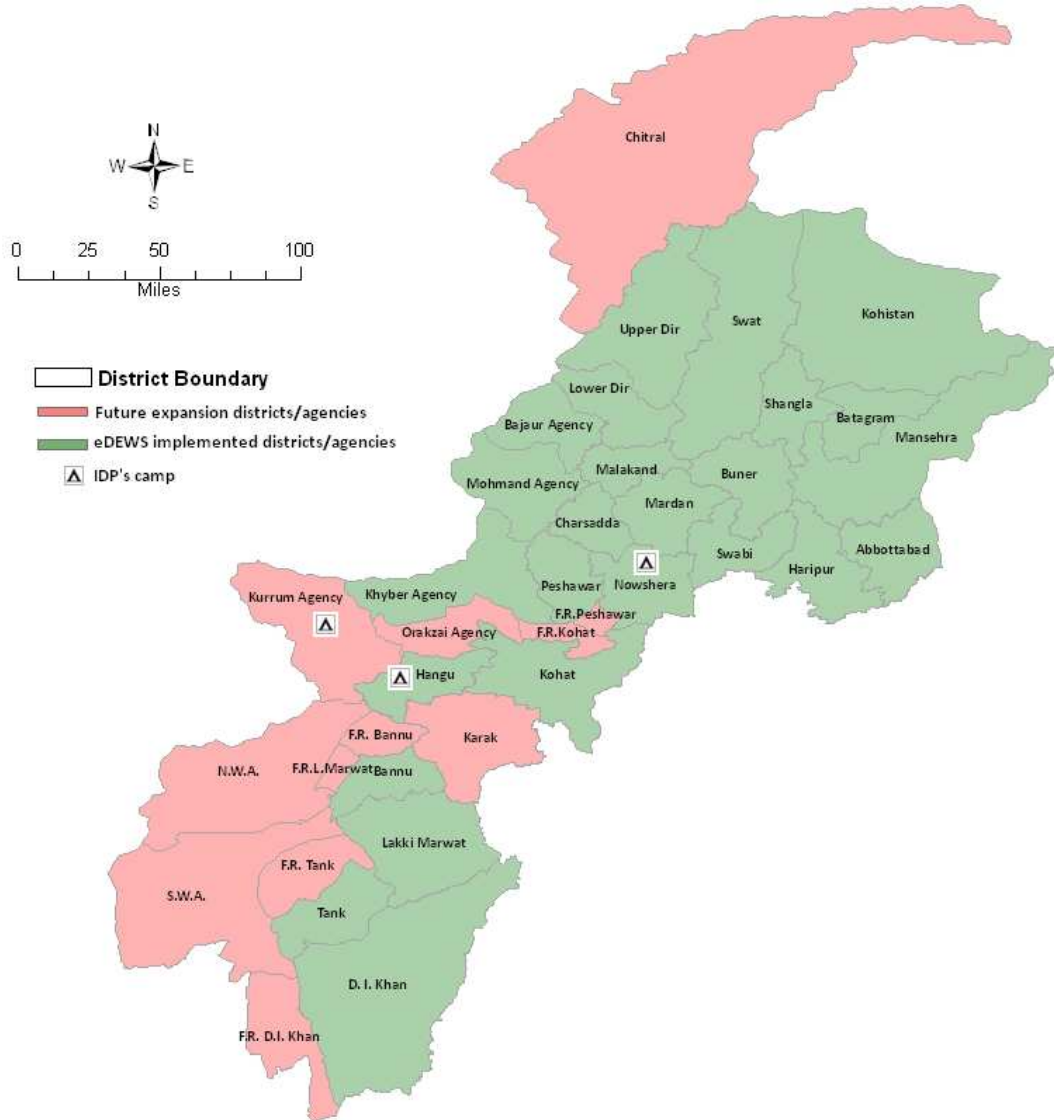


Weekly Epidemiological Bulletin

Electronic Disease Early Warning System & Response (eDEWS)

in Khyber Pakhtunkhwa and FATA

Epidemiological Week no. 37 (September 09 to 15, 2012)



Priority diseases under surveillance in eDEWS

Respiratory Diseases

Acute (upper) respiratory infections

Pneumonia <5 years

Pneumonia > 5 years

Suspected Diphtheria

Suspected Pertussis

Gastro Intestinal Diseases

Acute Watery Diarrhea <5 year

Acute Watery Diarrhea > 5 year

Bloody Diarrhea <5 years

Bloody Diarrhea > 5 years

Other Acute Diarrhea < 5 years

Other Acute Diarrhea > 5 years

Suspected Enteric/Typhoid Fever

Other Communicable

Suspected Malaria

Suspected Meningitis

Suspected Dengue Fever

Suspected Viral Hemorrhagic Fever

Pyrexia Of Unknown Origin

Vaccine Preventable

Suspected Measles

Suspected Acute Viral Hepatitis

Chronic Viral Hepatitis

Neonatal Tetanus

Acute Flaccid Paralysis

Skin Disease

Scabies

Cutaneous Leishmaniasis

Injuries /Poisoning

Injuries

Snake bite

Other unusual diseases

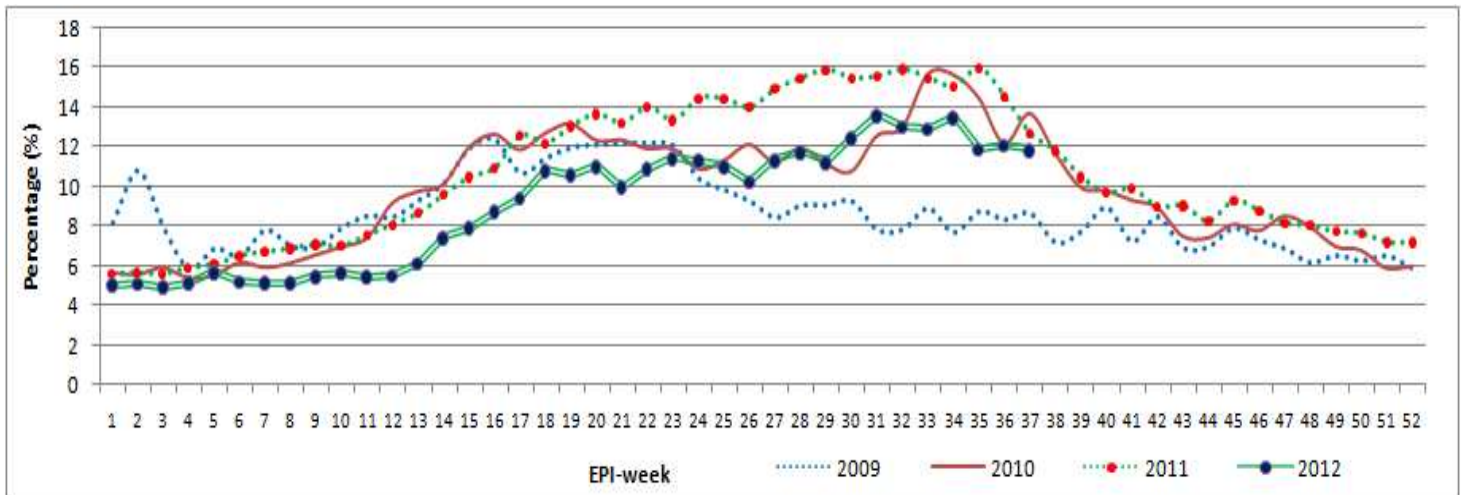
Other unusual diseases

HIGHLIGHTS

- **17 districts and 3 agencies** provided surveillance data to the eDEWS this week from **481** health facilities.
- A total of **136,236 consultations** were reported through eDEWS of which 16.2% or 22,021 cases were Acute Upper Respiratory Infection, is still the highest cause of morbidity of total consultations were showing 0.3% increase in percentage as compared to week 36.
- Other Acute Diarrhoea shared 12% or 16,099 cases of the total consultations showing 0.3% decrease in percentage as compared to previous week.
- Pyrexia of Unknown Origin accounted for 5.5% or 7,531 cases out of total consultations.
- Skin Infection (Skin Inf.) reported at 3% or 3,838 cases and suspected Typhoid Fever comprised only 0.3% or 451 cases out of total consultations.
- A total of **44 alerts** including **5 outbreaks** (2 for Acute Watery Diarrhoea (AWD) while 1 each for Acute Viral Hepatitis (AVH), Cutaneous Leishmaniasis (CL) and Measles) were received. 28 alerts for suspected Measles, 6 each for AWD and CL, 2 for Bloody Diarrhoea (BD) while 1 each for AVH and Dengue Fever (DF) were shared and responded.

Compiled situation in Khyber Pakhtunkhwa & FATA

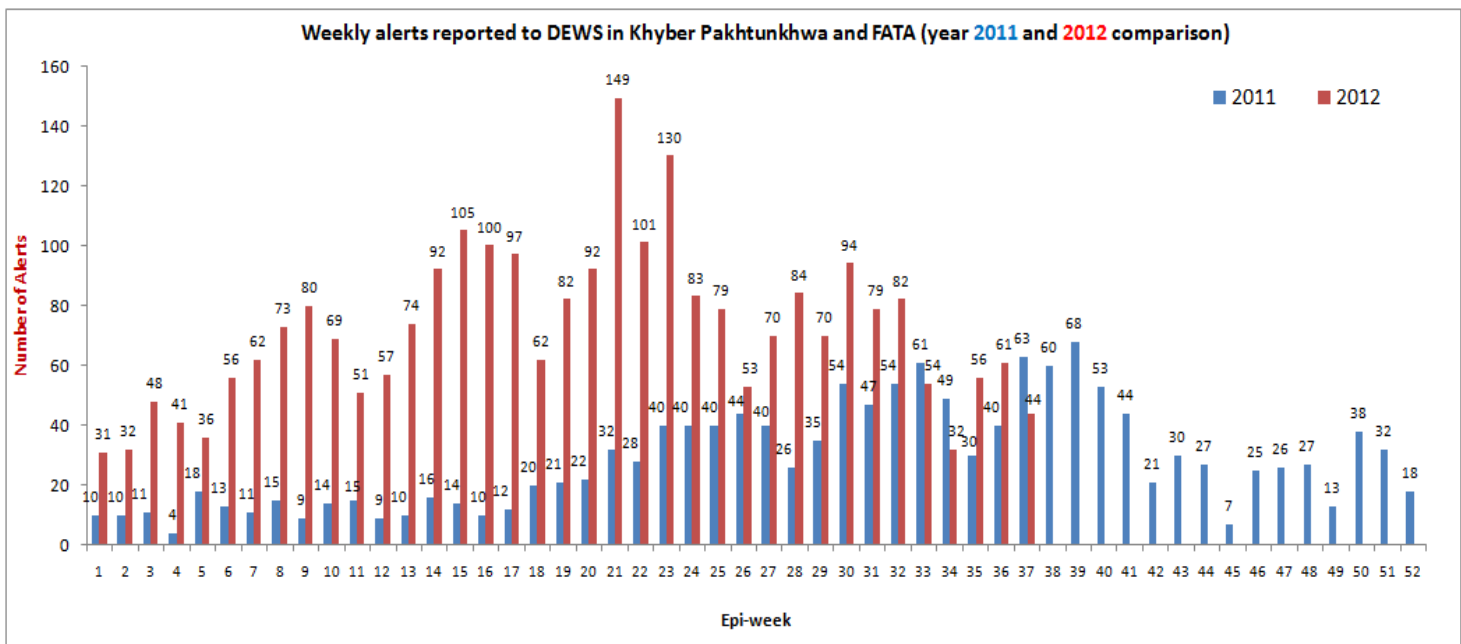
Figure-1: Four years trend of Other Acute Diarrhea (OAD) in Khyber Pakhtunkhwa/FATA (2009, 2010, 2011 and 2012)



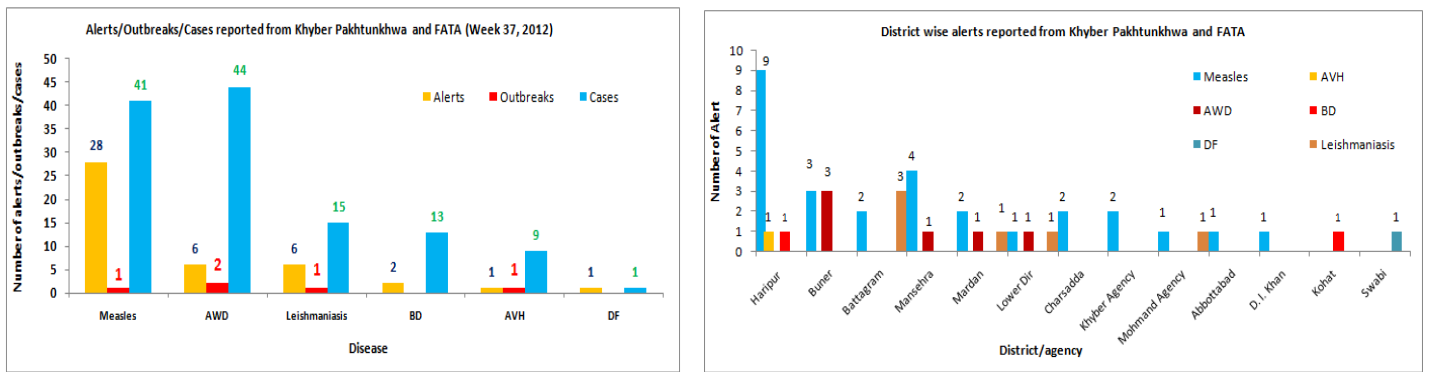
The above graph shows the trend of Other Acute Diarrhoea (OAD) cases out of total consultations reported to DEWS in 2009, 2010, 2011 and 2012 up until now. In this week 37, 2012 OAD consultations reported 12% or 16,099 cases of total cases and show 0.3% decrease in percentage as compared to week 36.

During this week high percentage of OAD consultations were reported from district Swat 20% followed by district Peshawar 16%, Hangu 15%, Malakand 15%, Mohmand 15%, Shangla 14%, Nowshera 13%, Dir Lower 12%, Battagram 12%, Abbottabad 11%, Mansehra 11% and Buner 11%.

Figure-2: Alerts reported in Khyber Pakhtunkhwa/FATA (year 2011 and 2012 comparison)



The above graph shows the different reported alerts to DEWS from year 2011 and 2012. High number of alerts reported in year 2012 due to more active surveillance and response. A cumulative figure for the current year is **2,666 alerts (6,423 cases)** including of **211 outbreaks** were reported. Measles alerts are leading in Khyber Pakhtunkhwa and FATA with **1,996 alerts (3,429 cases)** including **129 outbreaks**. Followed by C. Leishmaniasis **290 alerts (966 cases)** including **30 outbreaks**, Neonatal Tetanus **108 alerts (110 cases)**, AWD **86 alerts (767 cases)** including **14 outbreaks**, Typhoid Fever **42 alerts (148 cases)** including **12 outbreaks**, Bloody diarrhoea **20 alerts (126 cases)** including **5 outbreaks**, Diphtheria **19 alerts (19 cases)**, Acute Viral Hepatitis **17 alerts (195 cases)** including **8 outbreaks**, Pertussis **15 alerts (30 cases)** including **2 outbreaks**, suspected AFP **12 alerts (12 cases)**, Dengue Fever **12 alerts (12 cases)**, Dog Bite **9 alerts (9 cases)**, Scabies **7 alerts (320 cases)** including **5 outbreaks**, Falciparum Malaria **5 alerts (9 cases)** including **2 outbreaks**, H1N1 **5 alerts (11 cases)** including **1 outbreak**, CCHF **5 alerts (5 cases)** including **1 outbreak**, Tetanus **5 alerts (5 cases)**, Other Acute Diarrhoea **4 alerts (194 cases)** including **1 outbreak**, Chickenpox **3 alerts (8 cases)**, Dengue Hemorrhagic Fever **1 alert (4 cases)**, Rabies **1 alerts (9 cases)** including **1 outbreak**, Mumps **1 alert (2 cases)**, suspected DHF/CCHF **1 alert (1 case)**, Unexplained Fever **1 alert (1 case)** and Viral Encephalitis **1 alert (1 case)** were shared.

Figure-3: Number of alerts and alert cases reported in Khyber Pakhtunkhwa/FATA (Week 37, 2012)

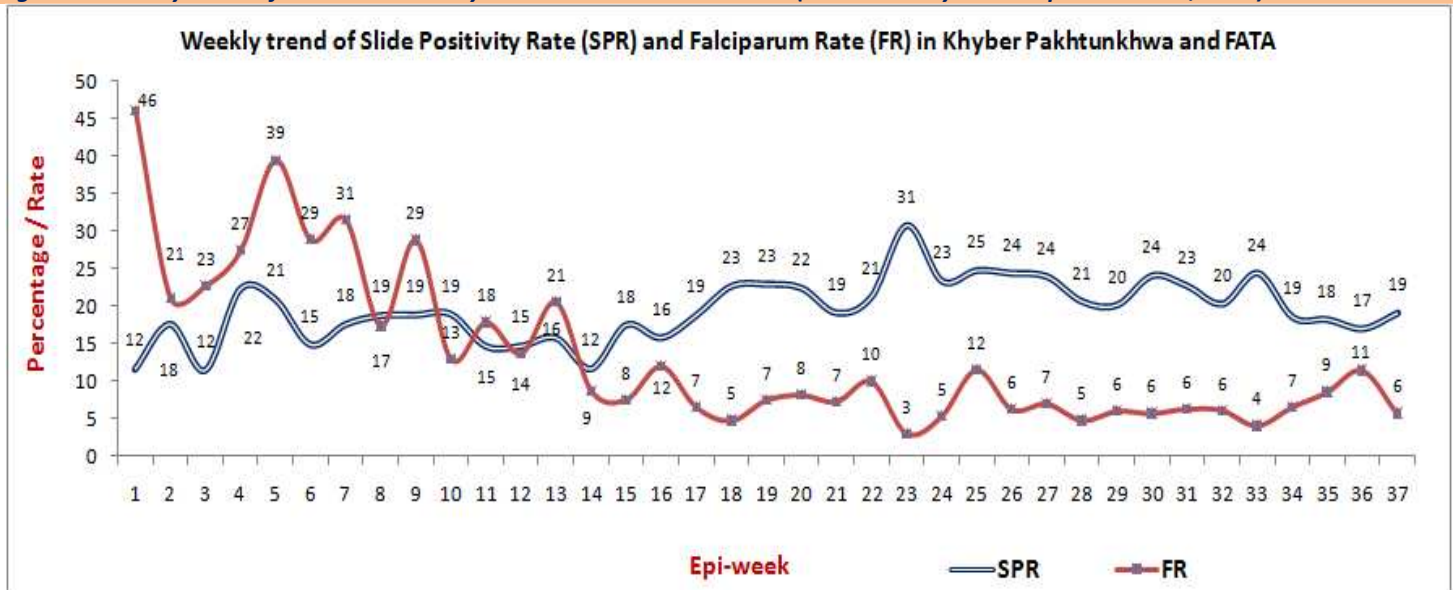
The above left side graph shows different alerts and their cases reported in KP/FATA and right side graph shows different alerts shared by district wise in week 36, 2012. In this week a total of **44 alerts (123 cases)** including **5 outbreaks** were reported and responded.

- Highest number of alerts reported from district Haripur 11 alerts including 9 for suspected Measles while 1 each for AVH and BD followed by
 - Buner 6 alerts including 3 each for suspected Measles and AWD
 - Battagram 5 alerts including 3 for CL and 2 for suspected Measles
 - Mansehra 5 alerts including 4 for suspected Measles and 1 for AWD
 - Mardan 4 alerts 2 for suspected Measles while 1 each AWD and CL
 - Lower Dir 3 alerts including 1 each for AWD, CL and suspected Measles
 - Charsadda 2 for suspected Measles
 - Khyber 2 for suspected Measles
 - Mohmand 2 alerts including 1 each for CL and suspected Measles
 - Abbottabad 1 for suspected Measles
 - D.I. Khan 1 for suspected Measles
 - Kohat 1 for Bloody Diarrhoea
 - Swabi 1 for Dengue Fever
- ❖ **5 outbreaks (AWD 2, CL 1, Measles 1 and AVH 1) were reported in this week.**
- ✓ 2 outbreaks (1 each for CL and AWD) were shared from district Mardan
 - Total of 10 CL cases were reported from village Surey Khowa and Alam Khan. Initially an alert of CL was reported from 2 small adjacent villages of UC Baizo Kharki. Outbreak was already declared in the UC. In response active surveillance was conducted and 9 more clinical cases were identified in the area and surrounding, line list was maintained. On job training of health staff was conducted for Intralesional administration of Inj Glucantime. RBM focal person was informed and requested for vector control measures in the areas. On request on DOH and WHO, FPHC mardan arranged 400 vials of Inj. Glucantime for newly registered cases. FPHC will also provide support in vector control interventions in the area with RBM & PPHI. EDO Health and focal person were informed.
 - Total of 10 AWD cases were reported from village Shahdand Baba. Initially a suspected AWD alert was reported from ER Unit of DHQ Hospital Mardan, after investigation of suspected cases at hospital, Epidemiological and Environmental assessment was carried out in the area. 7 cases were identified who had developed diarrhoea in past week in the community. 4 cases were with some dehydration and received medication from hospital and local practitioners. Field investigation found possible source as contaminated water supply. Stool sample was taken and sent to NIH. Water samples from source and end users were taken and tested for contamination. 3/3 water samples are contaminated. Health and hygiene sessions were conducted for affected families. Aqua tabs, soaps, hygiene kits and ORS distributed in the community. EDO health informed about the outbreak.
 - ✓ 2 outbreaks (1 each for AWD and Measles) were shared from district Lower Dir
 - WHO team visited village Sadbar Dama Shontala and field investigations were conducted. On active surveillance total of 30 OAD cases of OAD were found in the family. District response team and LHWs coordinator were requested for LHWs support in health education sessions. WHO informed EDO-H, M.S DHQ Hospital, district AWD/RRT response team and LHW coordinator about AWD outbreak in village Sadbar Dama Shontala. WHO collected stools sample from suspected case of AWD/ Cholera and stools sample was sent to NIH Islamabad. On job training was conducted and shock chlorination of springs and storage tanks. WHO in response provided 144 soaps, 200 ORS, 600 Zinc care, 20,000 Aqua tabs (tab/10 liters) and 960 pure schist, 10 jerry can, 10 hygiene kits, 10 kg HTH chorine powder, 2 Nurox filters were

provided to the affected families and villagers of Sadbar Dama Shontala. WHO conducted Mass chlorination of the source of AWD outbreak unprotected springs i.e. one main source at the top of the hill and one near the house. 11 water samples were collected from water tank, water cooler, springs, dug wells, hand pump and tested for pH, Turbidity, residual Chlorine and fecal coli form. One spring, one hand pump, and three Dug well were shock chlorinated in village shontala. Two hands pump and three Dug well were shock chlorinated in village Sadbar Dama Shontala. Springs and steam are running on same level, which easily contaminated the spring's water. The community people were informed; alternative sources were identified and disinfected before the community use. WHO conducted hygiene education of 67 people on water hygiene, personnel hygiene and food hygiene. 8 community persons were trained on water disinfection.

- Total of 9 suspected Measles cases were reported AR Taimergara camp. Initially 2 suspected Measles cases were reported from MSF-B Measles ward DHQ Hospital Dir Lower, suspected case was from village Afghan Refugees Taimer Camp, Tehsil Balambat, Lower Dir on 14th Sep, 2012. On return during Ramzan family came back to AR Camp and travelled to villages Kaladag, Tangi, Shahzadi, AR Camp. On 10th Sep, 2012 17 months old female developed fever and followed by rash on 12th September and was brought to DHQ Hospital and the suspected case was admitted in Measles ward by MSF-B on 14th September. On active surveillance WHO found 7 more Measles cases at home and nearby surrounding on 14th Sep, 2012. BCG scar was present on all cases, Vaccination partially done. Most families miss placed there Immunization cards. Blood sample collected and sent to NIH Islamabad for antibodies confirmation. Blood sample collected and sent to NIH Islamabad for antibodies confirmation. Isolation of the cases done. Outbreak Information was shared with EDO-H, FSMO UNHCR, Coordinator EPI, and Mop up campaign was conducted on 14th Sep, 2012 by DoH, FSMO CAR/UNHCR and WHO and 197 children have been vaccinated for Measles. Vitamin-A 1st dose given to 197 children and 2nd dose will be provided by tomorrow. Hygiene sessions conducted with health staff & Family members and community. Families of the cases were made aware of the situation and about the communicability of the disease. EDO-H, FSMO UNHCR, EPI Coordinator and LHWs Coordinator, informed about situation.
- ✓ 1 AVH outbreak was shared from district Haripur
 - Total of 9 AVH cases were reported from village Kot Najibullah. 4 suspected Acute Viral Hepatitis cases reported from CD Kot Najibullah. Epidemiological and Environmental assessments were carried out. Field investigation found possible source as contaminated water supply as the previous assessments have also confirmed this. No shared food intake history. Water samples were assessed for bacterial contamination. Active case finding was carried out in the area. 5 more cases were identified. Blood sample was taken and sent to NIH. LHWs were also asked to identify and notify cases of AVH and especially pregnant ladies with AVH to the CD for further reporting. EDO-H was informed of the outbreak. Health and hygiene session was conducted for the affected families. Soaps were distributed among the families. Coordination meeting was conducted with ACO for sustainable solution to contaminated water supply of the area.

Figure-4: Weekly trend of SPR and FR in Khyber Pakhtunkhwa and FATA (From January 1st to September 15th, 2012):-



A cumulative figure of RDT examined for the current year is **86,416** slides including **17,748** slides positive i.e. **20.5%** accounted for Slide Positivity Rate (SPR). Out of total positive, Falciparum Rate (FR) was accounted **9.3%** (1,648 slides). Similarly Vivax **91%** (16,100 slides) and Mixed **3.3%** (592 slides) were reported.

For the current week total **2,853** slides were tested for Malaria. Out of which SPR is accounted **19.1%** (546 slides) including FR **6%** (31 slides), Vivax **94.3%** (515 slides) and Mixed **0.2%** (1 slide).

Table-1: Leading causes of seeking health care in flood affected districts, compiled weekly reports

Disease name	Week-34	Week-35	Week-36	Week-37	Total Consultations (1 st Jan to 15 th Sep, 2012)
Acute Diarrhoea	10,270 (13.5%)	18,589 (12%)	15,857 (12%)	16,099 (12%)	467,466 (9.3%)
Bloody Diarrhoea	771 (1%)	1,126 (1%)	880 (1%)	966 (1%)	38,421 (1%)
Suspected Malaria	1,776 (2.3%)	3,972 (2.5%)	3,299 (2.5%)	3,172 (2.3%)	99,304 (2%)
Skin Diseases	2,194 (3%)	4,207 (3%)	3,680 (3%)	3,838 (3%)	136,669 (3%)
Pyrexia of Unknown Origin	4,696 (6%)	9,404 (6%)	7,704 (6%)	7,531 (5.5%)	253,822 (5%)
Acute Respiratory Infection	11,230 (15%)	21,908 (14%)	20,809 (16%)	22,021 (16.2%)	1,047,337 (21%)
Total Consultations	76,294	156,441	131,212	136,236	5,048,529

The above table shows compiled communicable diseases cases from weekly reports and proportional morbidity through eDEWS reported. Since January 1, 2012, approximately 4,048,529 patient consultations have been reported to the eDEWS from Khyber Pukhtunkhwa province and Federal Administered Tribal Areas (FATA).

In this week 37, 2012 (September 09 to 15, 2012) reports were received from 481 health centres and the major causes for seeking health care by the communities in almost all of the regions were diarrhoeal diseases 16,099 cases or 12%, acute respiratory infections 22,021 cases or 16.2%, skin diseases 3,838 cases or 3% and suspected malaria 3,172 cases or 2.3%.

Figure-5: Total number of HFs reported and consultations (Week no.1 to 37, 2012)

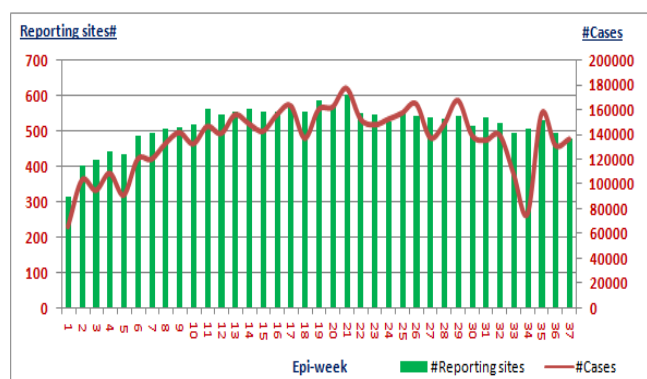


Figure-6: Leading communicable diseases percentage trend in Khyber Pakhtunkhwa and FATA (Week no.1 to 37, 2012)

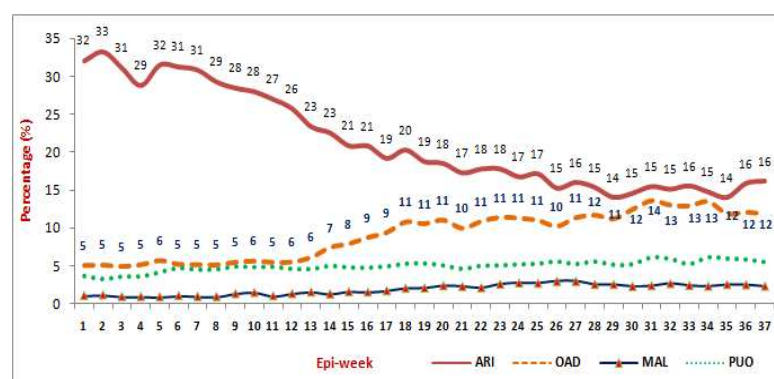


Figure 4 shows the number of health facilities and total number of consultations reported. Figure 5 shows the weekly percentage trend of ARI, Other Acute Diarrhoea, suspected Malaria and Pyrexia of Unknown Origin in Khyber Pakhtunkhwa and FATA from week 1 to 37, 2012. ARI percentage is showing fluctuation since week 29 and OAD showing 0.3% decrease in percentage in week 37 as compared to previous week.

Table-2: Respiratory Diseases situation in Khyber Pakhtunkhwa and FATA

Respiratory Diseases	Week-36	Week-37
Upper Respiratory Infection	20,160	21,230
Pneumonia <5	386	438
Pneumonia >5	263	353

Figure-7:

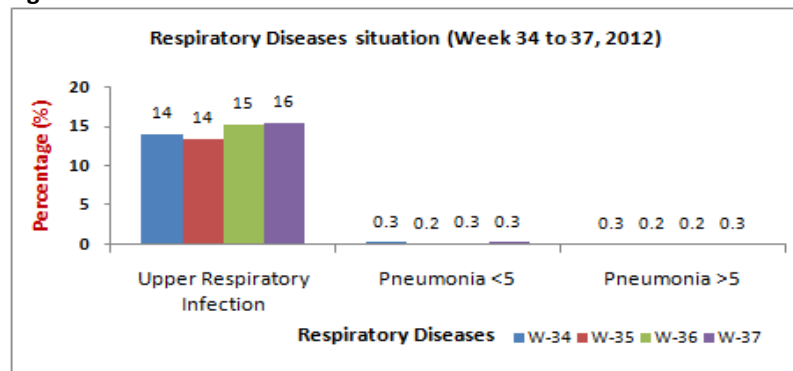


Table 2 shows the last two weeks Acute Respiratory Tract Infection (Upper Respiratory Tract Infection and Lower Respiratory Tract Infection (Pneumonia)) consultations comparison and figure 5 shows the last four weeks percentage situation of ARI.

Table-3: Gastro Intestinal Diseases situation in Khyber Pakhtunkhwa and FATA

Gastro Intestinal Diseases	Week-36	Week-37
Bloody Diarrhea <5	330	344
Bloody Diarrhea >5	550	622
Other Acute Diarrhea <5	8,100	8,056
Other Acute Diarrhea >5	7,757	8,043
Suspected Typhoid Fever	345	451

Figure-8:

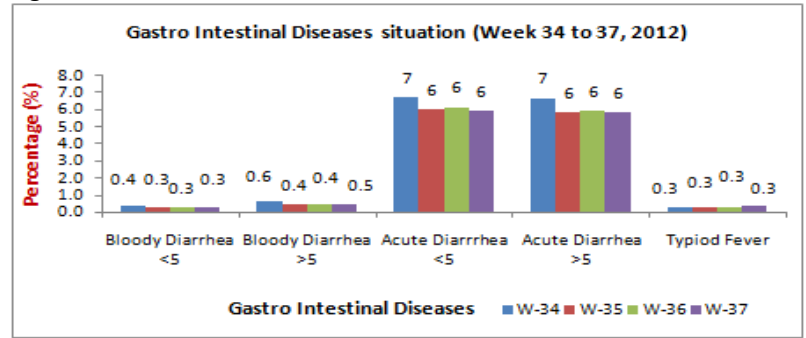


Table 3 shows the last two weeks cases of Gastro Intestinal Diseases and figure 6 shows the Gastro Intestinal Diseases percentage of last four weeks.

Province Khyber Pakhtunkhwa:

Figure-9: Percentage of consultations by gender and age wise

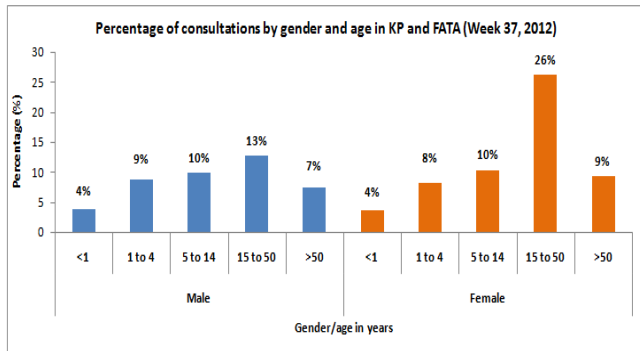
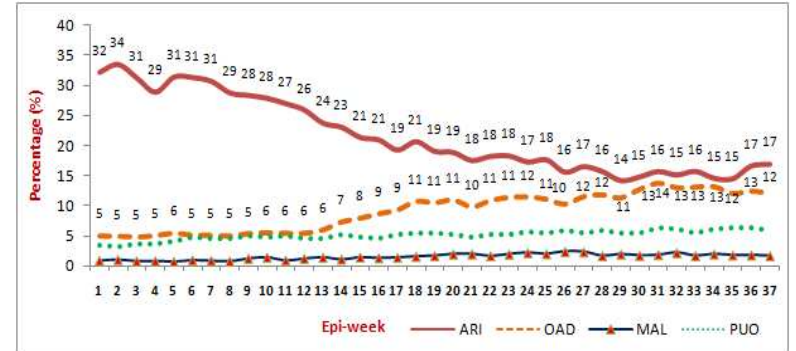
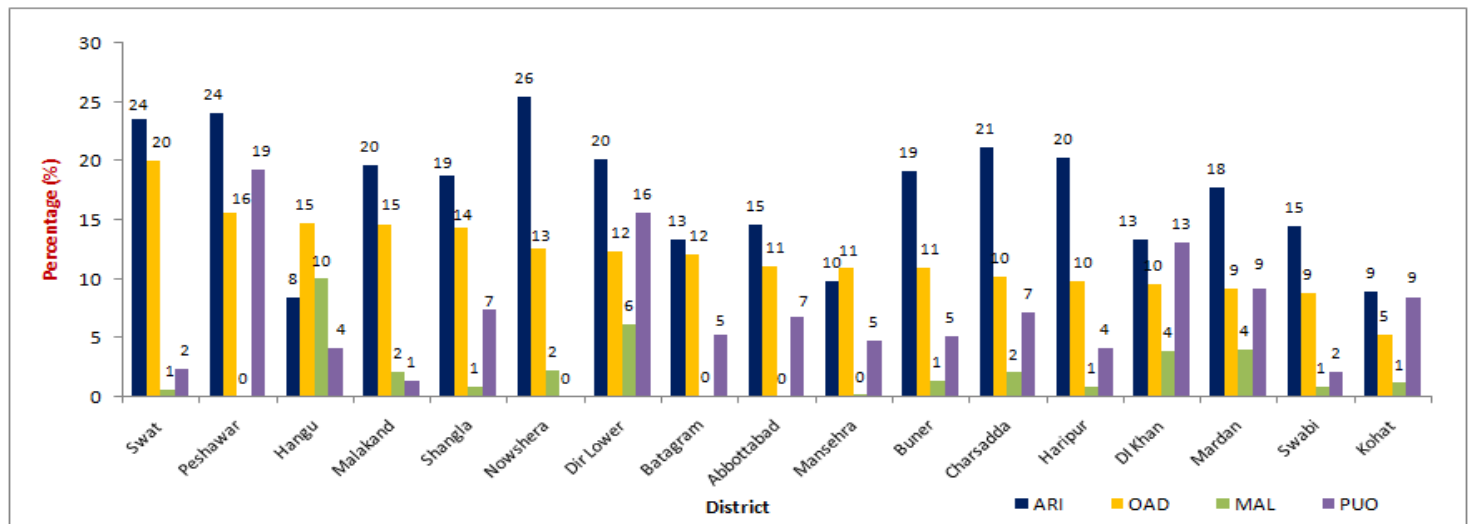


Figure-10: Weekly diseases (ARI, OAD, MAL and PUO) percentage trend



- Figure 8 shows percentage of consultations by gender and age wise in health events in over all diseases, male to female patients’ ratio reported was **42.3%** or **50,908** cases and **57.7%** or **69,357** cases respectively.
- Figure 9 shows weekly percentage trend of ARI, OAD, MAL and PUO from week 1 to 37, 2012.
- This week 17 districts reported to eDEWS from 432 health facilities with a total of **120,265** patients’ consultations.
- Acute Respiratory Tract Infection 20,441 cases reported were showing 0.3% increase in percentage as compared to week 36 patients’ visits and accounted for 17% of the total consultations.
- Other Acute Diarrhea cases 14,563 or 12.1% showing 0.4% decrease in percentage as compared to previous week and suspected Malaria 2,033 cases or 2% were reported.
- Pyrexia of Unknown Origin cases were shared 7,233 or 6%.
- Suspected Typhoid Fever (TF) cases 379 or 0.3% and Scabies cases 3,497 or 3% were reported.

Figure-11: ARI, OAD, MAL and PUO percentage situation of Khyber Pakhtunkhwa district wise in week 37, 2012



The above figure shows ARI, OAD, MAL and PUO percentage situation district wise in week 37, 2012. During this week high percentage of OAD consultations were reported from district Swat 20% (2,835 cases) followed by district Peshawar 16% (353 cases), Hangu 15% (501 cases), Malakand 15% (1,112 cases), Shangla 14% (810 cases), Nowshera 13% (313 cases), Dir Lower 12% (650 cases), Battagram 12% (1,116 cases), Abottabad 11% (352 cases), Mansehra 11% (1,865 cases) and Buner 11% (633 cases). Similarly high percentage of ARI cases were reported from district Nowshera 26% (631 cases), Peshawar 24% (545 cases), Swat 24% (3,347 cases), Charsadda 21% (1,764 cases), Haripur 20% (2,468 cases), Dir Lower 20% (1,058 cases) and Malakand 20% (1,496 cases). High percentages of suspected Malaria were reported from district Hangu 10% (339 cases), Dir Lower 6% (321 cases), Mardan 4% (313 cases) and D.I. Khan 4% (234 cases). High percentage of Pyrexia of Unknown Origin (PUO) consultations were reported from district Peshawar 19% (435 cases), Dir Lower 16% (818 cases), D.I. Khan 13% (798 cases), Mardan 9% (726 cases) and Kohat 9% (466 cases).

Table-4: Malaria Slides/RDT examination report of Khyber Pakhtunkhwa district wise in week 37, 2012

District	Slides / RDT examined	P. Falciparum	P. Vivax	P. Mixed	Total +Ve	Slide Positivity Rate (SPR)	Falciparum Rate (FR)	Vivax Rate	Mixed Rate
Charsadda	127	0	32	0	32	25.2	0.0	100.0	0.0
DI Khan	129	1	33	0	34	26.4	2.9	97.1	0.0
Dir Lower	26	0	8	0	8	30.8	0.0	100.0	0.0
Hangu	146	0	56	0	56	38.4	0.0	100.0	0.0
Kohat	380	5	52	0	57	15.0	8.8	91.2	0.0
Malakand	94	0	7	0	7	7.4	0.0	100.0	0.0
Mansehra	21	0	6	0	6	28.6	0.0	100.0	0.0
Mardan	674	2	73	0	75	11.1	2.7	97.3	0.0
Nowshera	110	1	25	0	26	23.6	3.8	96.2	0.0
Shangla	6	0	0	0	0	0.0	0.0	0.0	0.0
Swat	67	0	2	0	2	3.0	0.0	100.0	0.0
Total	1,780	9	294	0	303	17.0	3.0	97.0	0.0

A total of **1,780** slides were tested for Malaria in this week. Out of which **303** slides were positive and accounted for SPR is **17%** including **3%** (9 slides) for Falciparum Ratio, **97%** (294 slides) for Vivax ratio and **0%** for Mixed ratio.

Current week's Alert/Outbreak in Khyber Pakhtunkhwa:

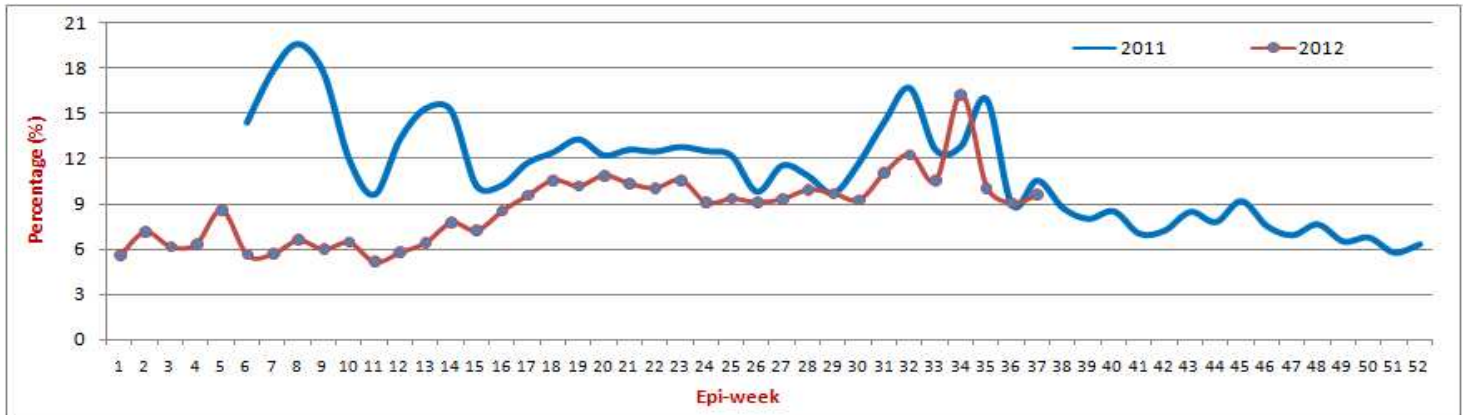
- A total of **40 alerts** including **5 outbreaks** (2 for Acute Watery Diarrhoea (AWD) while 1 each for Acute Viral Hepatitis (AVH), Cutaneous Leishmaniasis (CL) and Measles) were received. 25 alerts for suspected Measles, 6 for AWD, 5 for CL, 2 for Bloody Diarrhea (BD) while 1 each for AVH and Dengue Fever (DF) were shared and responded.

S. No	Date Investigated	Suspected Disease	District	Location	<5 M	>5 M	<5 F	>5 F	Sample	Positive	Cases	Death
1	12-Sep-12	Measles	Abbottabad	Nagribala	0	0	0	1	1	r	1	0
2	11-Sep-12	Measles	Battagram	Village Noshera, UC Ajmaira	0	0	1	0	0	r	1	0
3	12-Sep-12	Measles	Battagram	Village Koz Pao, Ajmaira, UC Ajmair	1	0	0	0	0	r	1	0
4	13-Sep-12	C. Leishmaniasis	Battagram	Village Bathkol, UC Houthal Bathkol,	0	1	0	0	0	r	1	0
5	13-Sep-12	C. Leishmaniasis	Battagram	Village Shamurad, UC Paimal	0	1	0	0	0	r	1	0
6	13-Sep-12	C. Leishmaniasis	Battagram	Village Dandai, District Shangla	0	1	0	0	0	r	1	0
7	11-Sep-12	Measles	Charsadda	Tariqabad	1	0	0	0	1	r	1	0
8	12-Sep-12	Measles	Charsadda	Sher Payan	1	0	0	0	1	r	1	0
9	10-Sep-12	Measles	Haripur	Village Sarai Saleh, UC Sarai Saleh	1	0	0	0	0	r	1	1
10	10-Sep-12	Measles	Haripur	Village Darlee, UC Luder Manag	1	0	0	0	0	r	1	0
11	12-Sep-12	Measles	Haripur	Saira Raja Shahid, UC Tofkian	1	0	0	0	0	r	1	0
12	15-Sep-12	Measles	Haripur	Village Ghayrian, UC Bakka	0	0	1	0	1	r	1	0

13	10-Sep-12	Measles	Haripur	Village Dheenda, UC Bakka	1	0	0	0	0	r	1	0
14	11-Sep-12	Measles	Haripur	Village Panian, UC Panian	1	0	0	0	0	r	1	0
15	11-Sep-12	Measles	Haripur	Kangra Colony, UC Panian	1	0	0	1	1	r	1	0
16	14-Sep-12	Measles	Haripur	Village Qazi pur, Qazi pur	1	0	0	0	0	r	1	0
17	13-Sep-12	Measles	Haripur	Village Gharaki, UC Beer	0	0	1	0	1	r	1	0
18	11-Sep-12	BD	Haripur	Village Bagra, UC Bagra	2	1	0	2	1	r	5	0
19	12-Sep-12	AVH	Haripur	Kot Najibullah, UC Kot Najibullah	1	4	2	2	1	r	9	0
20	11-Sep-12	BD	Kohat	Village Usterzai, UC Alizai, Tehsil Kohat	1	2	1	4	0	r	8	0
21	13-Sep-12	AWD	Lower Dir	Village Shontala, UC and Tehsil Samarbagh, Lower Dir	2	3	19	6	1	r	30	0
22	13-Sep-12	C. Leishmaniasis	Lower Dir	Village AR Taimer Camp, UC Taimer and Tehsil Balambat, Lower Dir	0	1	0	0	0	r	1	0
23	14-Sep-12	Measles	Lower Dir	Village AR Taimer Camp, UC Taimer and Tehsil Balambat, Lower Dir	1	7	1	0	1	r	9	0
24	11-Sep-12	Measles	Mansehra	Khaki camp # I shifted from Kaghan	0	1	0	0	1	r	1	0
25	10-Sep-12	Measles	Mansehra	Village Bhogarmang UC Bhogarman	1	0	0	0	0	r	1	0
26	13-Sep-12	AWD	Mansehra	Sheikhabad camp near Floor Mill	0	1	0	0	1	r	1	0
27	13-Sep-12	Measles	Mansehra	Mohallah Faiz abad Batdarran	1	0	0	0	0	r	1	0
28	14-Sep-12	Measles	Mansehra	Near Pano Bridge Thakra	1	1	0	0	1	r	2	0
29	11-Sep-12	C. Leishmaniasis	Mardan	Village Surey Khowa & Alam Khan Kally, UC Baizo Kharki, Tehsil Takht Bhai	0	3	1	6	0	r	10	0
30	12-Sep-12	AWD	Mardan	Village Shahdand Baba, UC Par Hotti	2	1	3	4	1	r	10	0
31	13-Sep-12	Measles	Mardan	Village Shahdand Baba, UC Par Hoti	0	0	2	0	1	r	2	0
32	13-Sep-12	Measles	Mardan	Village Chatally, UC Toru Qasim, Tehsil Mardan	1	1	2	0	1	r	2	0
33	11-Sep-12	AWD	Buner	nanser tehsil dagar	1	0	0	0	0	r	1	0
34	12-Sep-12	AWD	Buner	mala yousaf village near krapa tehsil dagar	1	0	0	0	0	r	1	0
35	13-Sep-12	AWD	Buner	village dokada tehsil dagar	1	0	0	0	0	r	1	0
36	13-Sep-12	Measles	Buner	bagra tehsil dagar buner	1	0	0	0	0	r	1	0
37	14-Sep-12	Measles	Buner	Village naseer abad u/c norezai tehsil gagra buner	1	0	0	0	0	r	1	0
38	14-Sep-12	Measles	Buner	village hisar tehsil dagar	0	0	1	0	0	r	1	0
39	09-Sep-12	Measles	D. I. Khan	Daraban Road	0	0	1	0	0	r	1	0
40	12-Sep-12	Dengue Fever	Swabi	BMC Swabi, Shahmansoor	0	1	0	0	1	r	1	0

Federal Administered Tribal Areas (FATA):

Figure-12: Two years trend of Other Acute Diarrhoea in FATA



DEWS was started in FATA three agencies (Bajaur, Khyber, Mohmand) since February, 2011 during FATA IDPs crisis. Figure 11 shows 2 years weekly percentage trend of OAD percentage trend. In week 37 OAD 1,536 cases or 9.6% were shared showing 0.6% increase in percentage as compared to previous week.

Figure-13: Percentage of consultations by gender and age wise

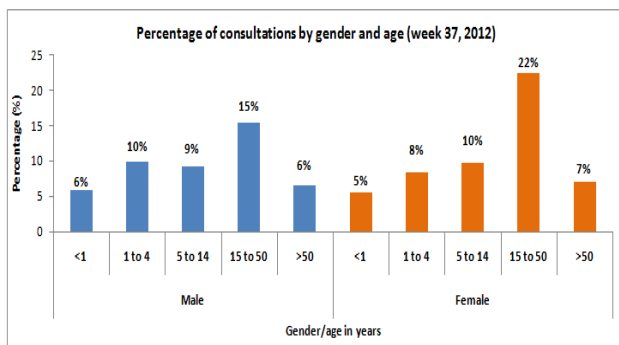
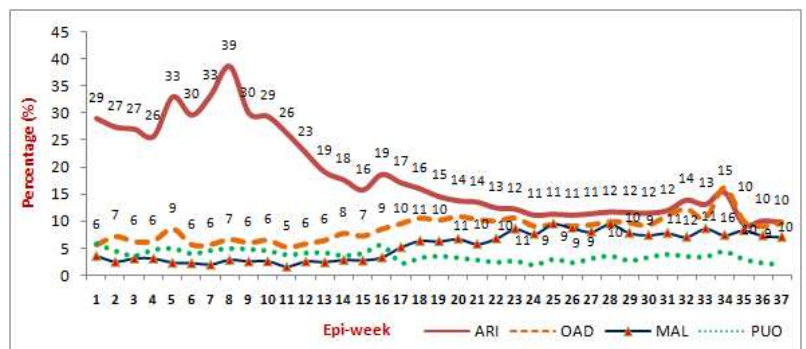
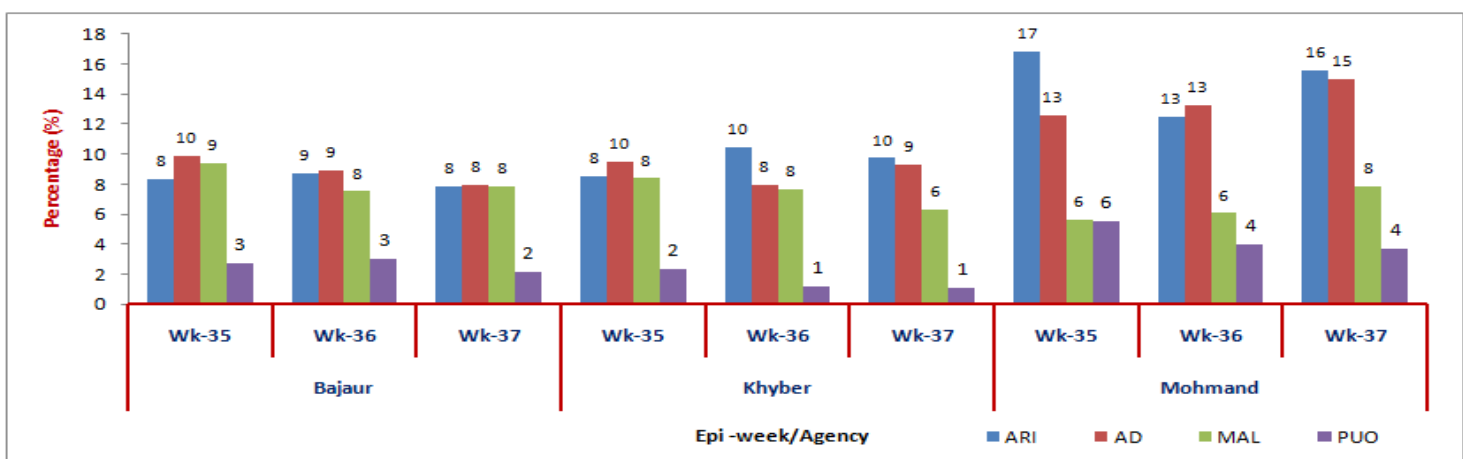


Figure-14: Weekly diseases (ARI, OAD, MAL and PUO) percentage trend



- Figure 12 shows percentage of consultations by gender and age wise in health events in over all diseases, male to female patients' ratio reported was **47%** or **7,484** cases and **53%** or **8,487** cases respectively
- Figure 13 shows weekly percentage trend of ARI, OAD, MAL and PUO from week 1 to 37, 2012.
- This week, 49 health facilities reported from 3 agencies to eDEWS with a total of **15,971** patients' consultations.
- Acute Respiratory Tract Infection (ARI) 1,580 cases reported were showing 0.2% decrease in percentage as compared to week 36 patients' visits and accounted for 10% of the total consultations.
- Other Acute Diarrhea (OAD) 1,536 cases or 9.6% were showing 0.6% increase in percentage as compared to week 36 and suspected Malaria (Mal) 1,139 cases or 7.1% were shared.
- Pyrexia of Unknown Origin (PUO) shared 298 cases or 2% which shows 0.3% decrease in percentage as compared to previous week, suspected Typhoid Fever (TF) 72 cases or 0.5% and Scabies 341 cases or 2.1% were reported.

Figure-15: ARI, OAD, MAL and PUO percentage situation of Federal Administered Treaty Agency (FATA) in last three weeks



The above figure 14 shows ARI, OAD, MAL and PUO percentage situation in FATA three agencies. During week 37, 2012 high percentage of ARI consultations were reported as compared to other diseases. In this week high percentage of Other Acute Diarrhoea and ARI consultations were reported from Mohmand as compared to Khyber and Bajaur agency. In this week OAD 15% or 360 cases, 9% or 707 cases and 8% or 469 cases were shared respectively from Mohmand, Khyber and Bajaur agencies. Similarly ARI 16% or 373 cases, 10% or 742 cases and 8% or 465 cases were shared respectively from Mohmand, Khyber and Bajaur agencies. Pyrexia Unknown Origin (PUO) cases percentage were reported 4% or 88 cases, 2% or 127 cases and 1% or 83 cases respectively from Mohmand, Bajaur and Khyber agencies. Suspected Malaria were shared 8% or 189 cases from Mohmand, 8% or 468 cases from Bajaur and 6% or 482 cases from Khyber agency.

Table-5: Malaria Slides/RDT examination report of FATA agency wise in week 37, 2012

Agency	Slides / RDT examined	P. Falciparum	P. Vivax	P. Mixed	Total +Ve	Slide Positivity Rate (SPR)	Falciparum Rate (FR)	Vivax Rate	Mixed Rate
Bajaur	490	9	88	0	97	19.8	9.3	90.7	0.0
Khyber	421	1	74	0	75	17.8	1.3	98.7	0.0
Mohmand	162	11	59	1	71	43.8	16.9	83.1	1.4
Total	1,073	21	221	1	243	22.6	9.1	90.9	0.4

A total of **1,073** slides were examined for Malaria in this week. Out of which **243** slides were positive and accounted for SPR is **22.6%** including **9.1%** (22 slides) for Falciparum Ratio, **91%** (221 slides) for Vivax and **0.4%** (1 case) for Mixed.

Current week's Alert/Outbreak in FATA:

- A total of 4 alerts (3 for suspected Measles and 1 for Cutaneous Leishmaniasis (CL)) were reported and responded in this week.

S. No.	Date Investigated	Suspected Disease	Agency	Location	<5 M	>5 M	<5 F	>5 F	Sample	Positive	Cases	Death
1	12-Sep-12	Measles	Khyber Agency	Village Haji Namdar, UC Ash khel, Tehsil Landikotal	2	0	0	0	0	r	2	0
2	13-Sep-12	Measles	Khyber Agency	Village Baramshah, Lakatkhel Khoga khel, Tehsil Landikotal	1	0	0	0	0	r	1	0
3	11-Sep-12	C. Leishmaniasis	Mohmand Agency	Qandahari	0	0	0	1	0	r	1	0
4	14-Sep-12	Measles	Mohmand Agency	Bakhmal shah	1	1	0	0	1	r	2	0