

Disease situation in Jalozai IDP's camp, Khyber Pakhtunkhwa Week 50 (December 09th to 15th, 2012)

Highlights:

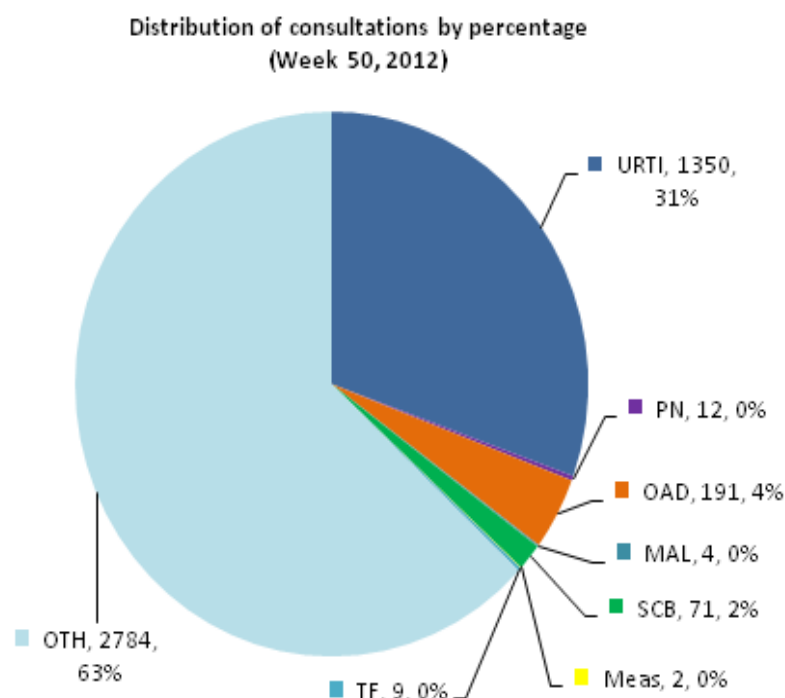
- ❖ **Acute Respiratory tract infections (ARI)** accounted for **31% or 1,362 cases** of the total patients (**4,432** consultations) in all age groups and is showing 4.5% increase in percentage of ARI patient visits as compared to week 49, 2012.
- ❖ **Other Acute Diarrhea (OAD)** accounted for **4.3% or 191 cases** of the total patient consultations in all age groups by showing no change in percentage as compared to OAD patient visits in previous week.
- ❖ Confirmed **Malaria (MAL)** shared **0.1% or 4 cases** of all patient visits in current week.
- ❖ **Skin Infections (SCB)** reported as **2% or 71 cases** of the total patient consultations.
- ❖ Total of 2 suspected Measles alerts were reported in this week.



Weekly disease consultations in Jalozai IDPs camp:-

Figure 1: Distribution of consultations by percentage

Table 1: Cases reported from Jalozai IDPs camp



Disease name	Week-50	
	Cases	%
Upper Respiratory Tract Infection (URTI)	1,350	30.5
Pneumonia (PN)	12	0.3
Bloody Diarrhea (BD)	-	-
Other Acute Diarrhea (OAD)	191	4.3
Acute Watery Diarrhea (AWD)	-	-
Confirmed Malaria (MAL)	4	0.1
Scabies (SCB)	71	1.6
Chronic Viral Hepatitis (CVH)	-	-
Suspected Measles (Meas)	2	<1
Pyrexia Unknown Origin (PUO)	-	-
Cutaneous Leishmaniasis (CL)	-	-
Suspected Typhoid Fever (TF)	9	0.2
Other diseases (OTH)	2,793	63
Total consultations	4,432	

A total **4,432** consultations have been reported through DEWS during week 50 (December 9 to 15, 2012) (table 1). **Seven (7) health static units** (Merlin International 4, CAMP Organization 2 and FATA health facility 1) from Jalozai IDPs camp shared daily/weekly disease surveillance data through DEWS.

Major causes for seeking health care percentage trend in Jalozai IDPs camp:-

Figure 2: Weekly disease percentage trend in Jalozai IDPs camp (Week 14 to 50, 2012):

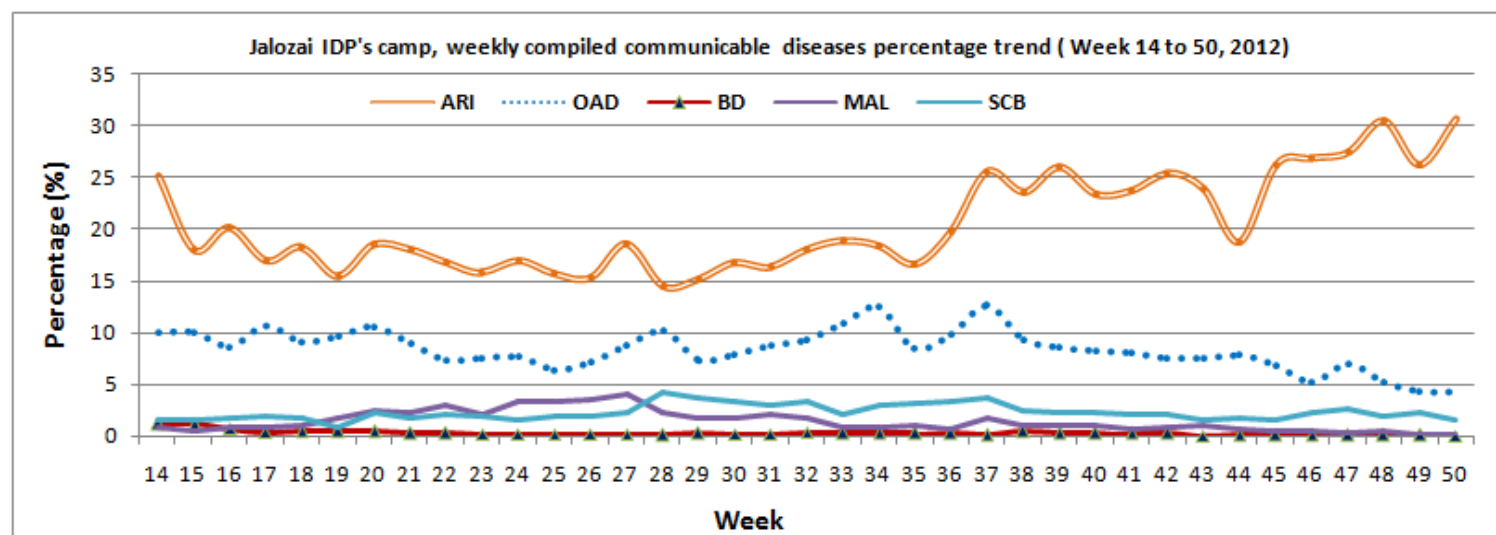


Figure 2 shows percentage trend of major communicable diseases in Jalozai IDPs camp. In this week ARI shared 31% or 1,362 cases is showing 4.5% increase and OAD shared 4.3% or 191 cases is showing no change in percentage.

Total consultations reported from all health units in Jalozai IDPs camp:-

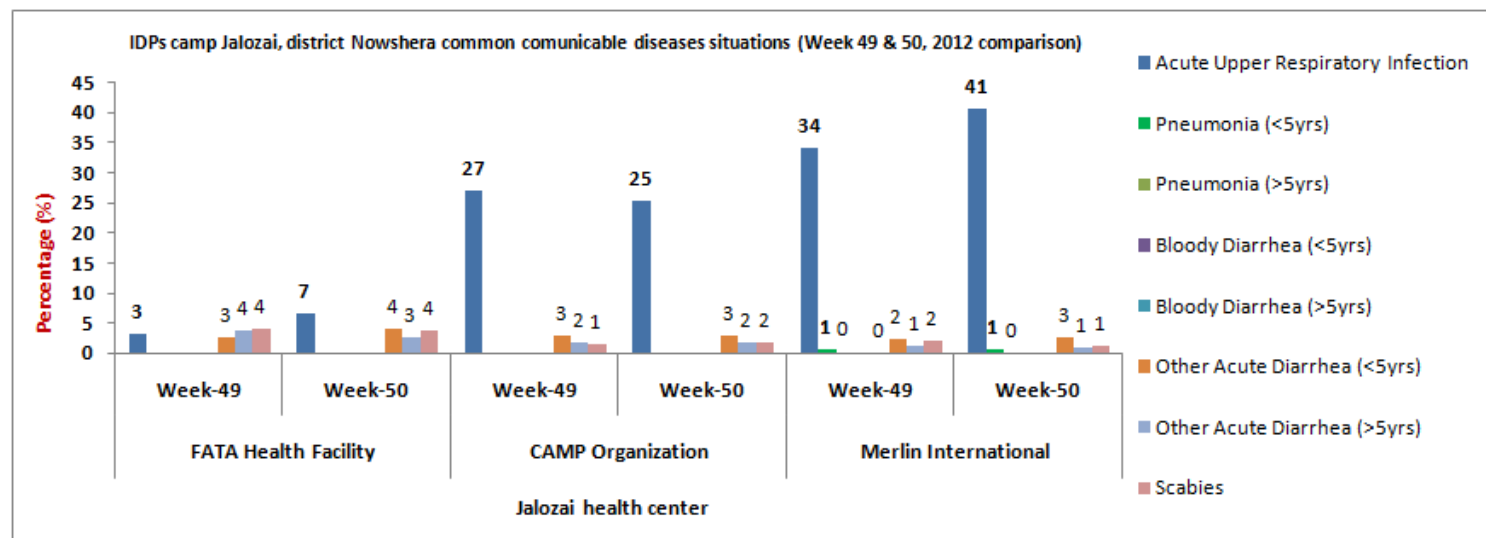
Communicable diseases	CAMP (2 units)				Merlin (4 units)				FATA Health facility (1 unit)			
	Wk-49 (Cases)	%	Wk-50 (Cases)	%	Wk-49	%	Wk-50	%	Wk-49 (Cases)	%	Wk-50 (Cases)	%
Acute Upper Respiratory Infection	493	27	427	25.3	855	34.1	886	40.6	32	3.2	37	6.6
Pneumonia (<5yrs)	-	-	-	-	13	0.5	10	0.5	-	-	-	-
Pneumonia (>5yrs)	-	-	-	-	4	0.2	2	0.1	-	-	-	-
Bloody Diarrhea (<5yrs)	-	-	-	-	1	<1	-	-	-	-	-	-
Bloody Diarrhea (>5yrs)	-	-	-	-	2	0.1	-	-	-	-	-	-
Other Acute Diarrhea (<5yrs)	53	2.9	49	3	55	2.2	58	2.7	27	2.7	23	4.1
Other Acute Diarrhea (>5yrs)	29	1.6	28	1.7	29	1.2	18	1	38	3.8	15	2.7
Suspected Measles (Meas)	-	-	2	<1	-	-	-	-	-	-	-	-
Confirmed Malaria	2	0.1	2	<1	5	0.2	2	0.1	-	-	-	-
Cutaneous Leishmaniasis (CL)	-	-	-	-	1	<1	-	-	-	-	-	-
Pyrexia Unknown Origin (PUO)	-	-	-	-	-	-	-	-	-	-	-	-
Scabies (SCB)	26	1.4	28	1.7	51	2	22	1	40	4	21	3.7
Suspected Typhoid Fever (TF)	17	1	5	0.3	1	<1	4	0.2	-	-	-	-
Chronic Viral Hepatitis (CVH)	-	-	-	-	-	-	-	-	-	-	-	-
Other diseases	1,206	66	1,148	68	1,488	59.4	1,178	54	861	86.3	467	83
Total Consultations	1,826		1,689		2,505		2,180		998		563	

A comparison of the ARI consultations by health units in Jalozai camp on week 50 (December 9 to 15) shows that high proportion of ARI cases are reported accounted for 31% (URTI 30.5% and Pneumonia 0.5%), or 1,362 cases

followed by Other Acute Diarrhea 4.3% or 191 cases. Confirmed Malaria comprised 0.1% or 4 cases in consolidated data out of total consultations.

Disease trends by percentage in IDPs Jalozai camp:-

Figure 3: Most common communicable diseases situation in Jalozai IDPs camp as percentage of consultations (Week 49 and 50 comparison)



The above figure 3 shows major health causes percentage situation in Jalozai IDPs camp. During week 50 high percentages of ARI consultations were reported from Merlin health units as compared to CAMP health units and FATA health facility. Similarly high percentages of OAD consultations were reported from FATA health unit as compared to CAMP and Merlin health facilities. In this week ARI 41% and OAD 3.5% were shared from Merlin health facilities, ARI 25.3% and OAD 4.6% were from CAMP health units, also ARI 6.6% and OAD 7% were from FATA health center. Total of 2 suspected Measles alerts were reported from CAMP health facilities in this week.

Distribution of consultations percentage by age and gender

Figure 4: Age and gender wise segregated disease situation in Jalozai IDPs camp, week 50

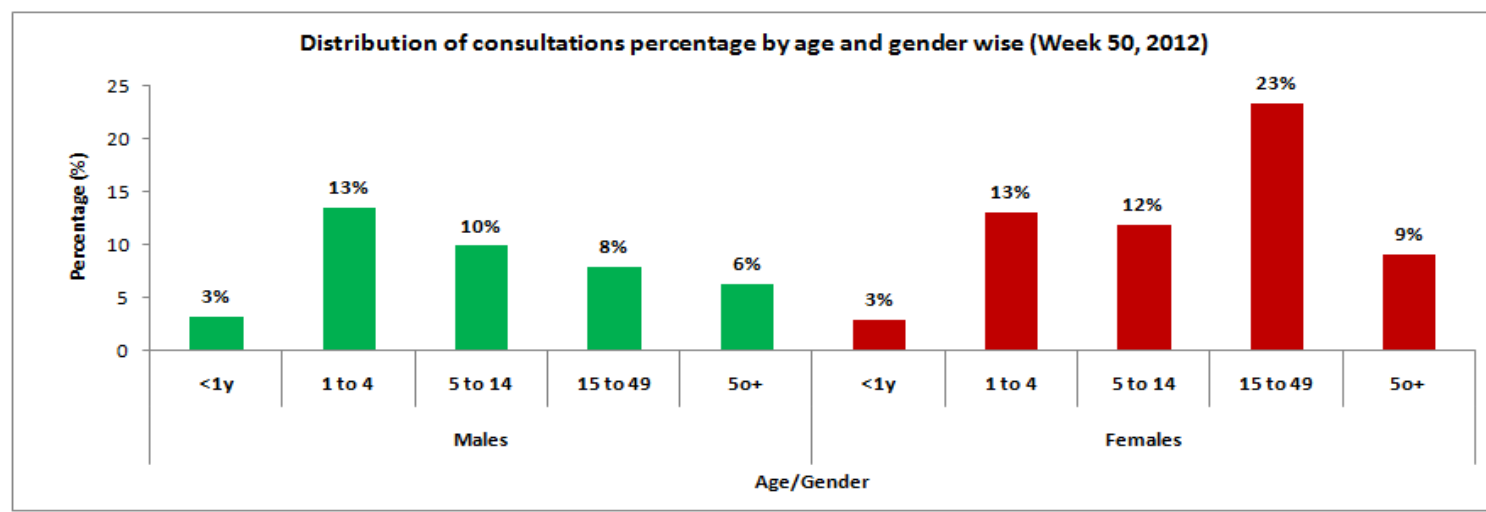


Figure 4 shows comparison of the consultations by gender and age wise in health events in over all diseases, male to female patients' ratio reported was **40% or 1,784 cases** and **60% or 2,648 cases** respectively.

Immunization in Jalozai IDPs camp:-

Table 3 (a & b): Immunization (Jalozai IDP's Camp, Nowshera) from 9th to 15th December, 2012

a) Routine vaccination of Jalozai IDPs camp (Week 50):

EPI	Routine Vaccination										OPV U5 yrs (Other than Routine)*	Women	TT1	TT2	TT3	TT4	TT5	Total
	Children	BCG	Polio			PENTA			Measles	Fully Immunized								
<1 year	Birth		1	2	3	1	2	3										
<1 year	80	51	62	59	61	61	59	61	53	51	47	Pregnant	46	56	13	4	2	2,155
>=1 year	9	0	7	5	4	7	5	4	125	0	1,183	Non-Pregnant (15-49y)	12	11	8	6	3	
Total	89	51	69	64	65	68	64	65	178	51	1,230	-	58	67	21	10	5	

b) Routine vaccination of Jalozai IDPs camp (Consolidated data of all vaccination points in Jalozai IDP camp):

EPI	Routine Vaccination										OPV U5 yrs (Other than Routine)*	Women	TT1	TT2	TT3	TT4	TT5	Total
	Children	BCG	Polio			PENTA			Measles	Fully Immunized								
<1 year	Birth		1	2	3	1	2	3										
<1 year	2,571	1,707	2,971	2,290	2,155	3,009	2,315	2,159	2,608	1,721	3,638	Pregnant	2,939	1,756	327	65	10	131,492
>=1 year	1,438	0	1,579	867	831	1,601	868	837	3,577	751	76,521	Non-Pregnant (15-49y)	7,475	1,159	1,107	534	106	
Total	4,009	1,707	4,550	3,157	2,986	4,610	3,183	2,996	6,185	2,472	80,159	-	10,414	2,915	1,434	599	116	

*OPV dosage received during OPD and not the ones in the routine

Laboratory test conducted in Jalozai IDPs camp:-

Table 4 (a & b): Laboratory test situation in IDPs Jalozai Camp, Nowshera

a) laboratory test situation data in Jalozai IDPs camp (December 9 to 15, 2012):

Test Name	MP (microscopy)	MP (RDT)*	HB%	HBS	HCV	B.GROUP	Typhoid	B.SUGAR	ESR	LEISHMANIASIS	PREGNENCIES	URINE ALBUMIN	URINE SUGAR	URINE R/E	STOOL R/E	BILIRUBIN	Syphilis	SPUTUM FOR AFB	TOTAL
+Ve	4	4	14	5	0	-	12	7	-	2	39	11	1	60	2	7	0	0	-
-Ve	35	29	58	77	79	-	9	70	-	0	38	108	118	78	3	112	63	0	-
Total	39	33	72	82	79	75	21	77	0	2	77	119	119	138	5	119	63	0	1,120

* Malaria slides /RDT examined report

Health Centers	Slides/RDT examined	P. Falciparum	P. Vivax	Mixed	Total +ve	Falciparum + Mixed	Slide Positivity Rate (SPR)	Falciparum Rate
Merlin	11	0	2	0	2	0	18.2	0
CAMP	22	0	2	0	2	0	9.1	0
Total	33	0	4	0	4	0	27.3	0

A total of 33 slides were examined for Malaria in this week. Out of total slides examined 4 (27.3%) were positive; out of which P. Falciparum 0 (0%), P. Vivax 4 (27.3%) and Mixed 0 (0%) were shared.

b) laboratory test situation data in Jalozai IDPs camp (Consolidated):

Test Name	MP (microscopy)	MP (RDT)*	HB% ++	HBS	HCV	B.GROUP	Typhoid	B.SUGAR	ESR	LEISHMANIASIS	PREGNENCIES	URINE ALBUMIN	URINE SUGAR	URINE R/E	STOOL R/E	BILIRUBIN	Syphilis	SPUTUM FOR AFB	TOTAL
+Ve	539	742	511	64	59	-	29	207	-	13	860	162	26	586	96	43	8	0	-
-Ve	1,101	1,538	1,759	1,927	1,879	-	105	1,652	-	68	689	1,665	1,806	1,459	131	1,559	1,703	2	-
Total	1,640	2,280	2,270	1,991	1,938	1,841	134	1,859	24	81	1,549	1,827	1,832	2,045	227	1,602	1,711	2	24,853

Nutrition situation in Jalozai IDPs camp:-

Table 5: Nutrition situation in IDPs Jalozai camp Nowshera

➤ Nutrition situation data (Week 50):

CMAM Finding	No of Children screened (6-59 months)		MAM MUAC < 12.5-11.5 cm		SAM MUAC < 11.5cm		Malnutrition at Risk Borderline MUAC ≤13.5-12.5 cm		No Of PLW Screened		Malnourish PLW	
	M	F	M	F	M	F	M	F	P	L	P. MUAC<21	L. MUAC<21
Gender wise												
Number of screened	77	82	7	12	0	3	9	14	23	13	0	0
Total	159		19		3		23		36		0	

➤ Nutrition situation data (Consolidated):

CMAM Finding	No of Children screened (6-59 months)		MAM MUAC < 12.5-11.5 cm		SAM MUAC < 11.5cm		Malnutrition at Risk Borderline MUAC ≤13.5-12.5 cm		No Of PLW Screened		Malnourish PLW	
	M	F	M	F	M	F	M	F	P	L	P. MUAC<21	L. MUAC<21
Gender wise												
Number of screened	5,639	5,788	505	724	128	180	693	869	2,407	3,596	365	274
Total	11,427		1,229		308		1,562		6,003		639	

Health Education situation in Jalojai IDPs camp:-

Table 6: Health education situation in IDP's Jalojai camp Nowshera

Data of health education situation (Week 50, 2012)					Data of health education situation (Consolidated)				
Sessions	Number of Sessions	Total participants			Sessions	Number of Sessions	Total participants		
		Males	Females	Total			Males	Females	Total
Total Sessions	591	1,910	3,083	4,993	Total Sessions	19,229	58,394	98,176	156,570

MCH in Jalojai IDPs camp:-

Figure 5: MCH situation in IDP's Jalojai camp Nowshera (December 9 to 15, 2012)

