

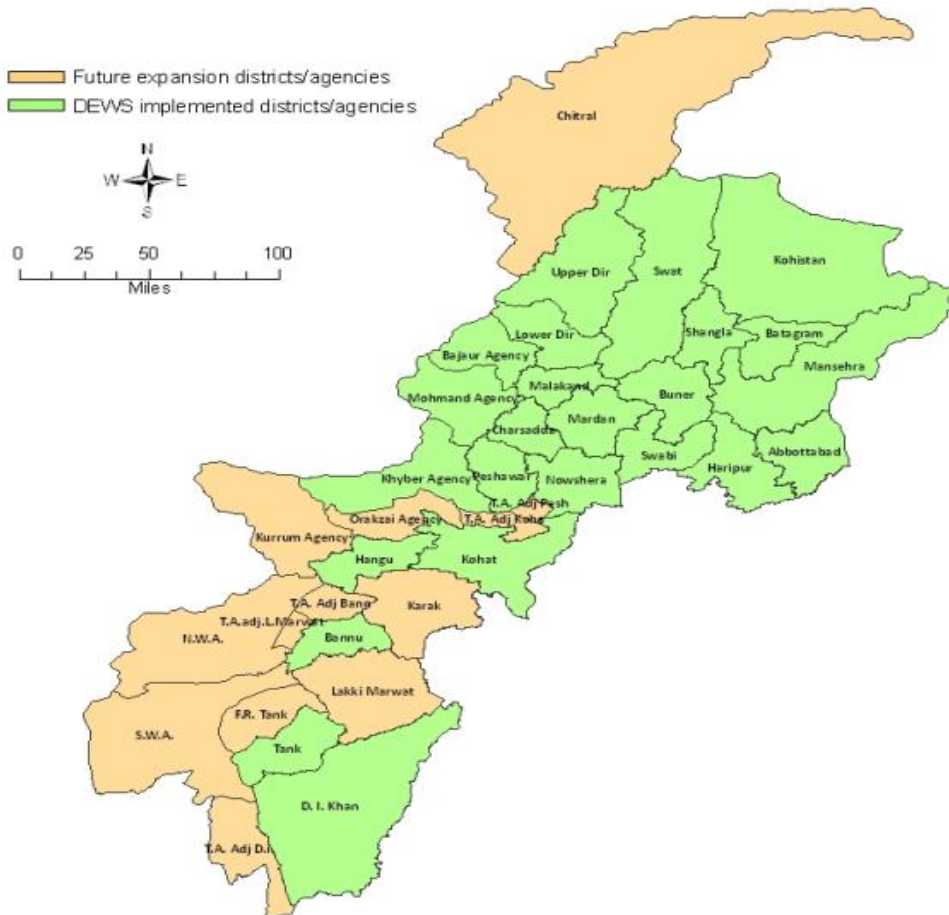
Weekly Epidemiological Bulletin

Electronic Disease Early Warning System & Response (eDEWS)

in Khyber Pakhtunkhwa and FATA

Epidemiological Week-5 (29th January to 04th February, 2012)

DEWS implemented districts/agencies in Khyber Pakhtunkhwa/FATA



Priority diseases under surveillance in eDEWS

Respiratory Diseases

Acute (upper) respiratory infections
Pneumonia <5 years
Pneumonia > 5 years
Suspected Diphtheria
Suspected Pertussis

Gastro Intestinal Diseases

Acute Watery Diarrhea <5 year
Acute Watery Diarrhea > 5 year
Bloody Diarrhea <5 years
Bloody Diarrhea > 5 years
Other Acute Diarrhea < 5 years
Other Acute Diarrhea > 5 years

Other Communicable

Suspected Enteric/Typhoid Fever
Suspected Malaria
Suspected Meningitis
Suspected Dengue Fever
Suspected Viral Hemorrhagic Fever
Pyrexia Of Unknown Origin

Vaccine Preventable Diseases

Suspected Measles
Suspected Acute Viral Hepatitis
Chronic Viral Hepatitis
Neonatal Tetanus
Acute Flaccid Paralysis

Skin Disease

Scabies
Cutaneous Leishmaniasis

Injuries /Poisoning

Snake bite (with signs/ symptoms of poisoning)

Other unusual diseases

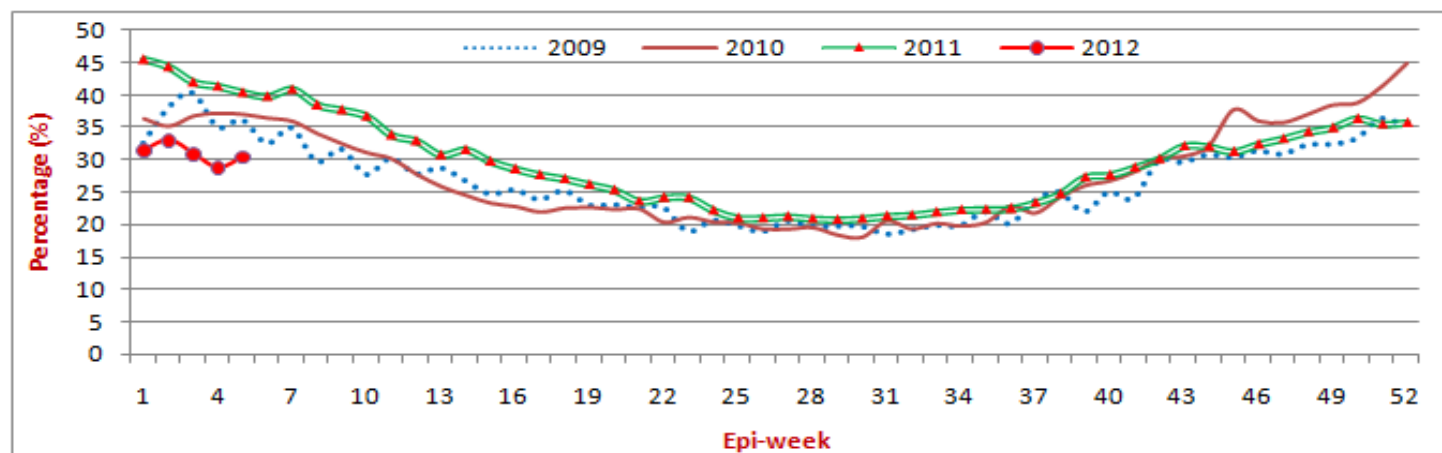
Other unusual diseases (Specify below)

HIGHLIGHTS

- ❖ 14 districts and 1 agency provided surveillance data to the eDEWS this week from 376 health facilities on time.
- ❖ A total of 76,937 consultations were reported through eDEWS of which 31% (23,442 cases) were Acute Upper Respiratory Infection, is still the highest cause of morbidity of total consultations were showing 2% increase in percentage as compared to week 4.
- ❖ Acute Diarrhea shared 5% (4,176) of the total consultations showing no change in percentage as compared to last five weeks.
- ❖ Pyrexia of Unknown Origin accounted for 4% (3,386 cases) out of total (76,937) consultations.
- ❖ Skin Infection (Skin Inf.) reported at 3% (1,964) and Typhoid Fever comprised only 0.3% (202) out of total consultations.
- ❖ 36 alerts were reported in this week, Thirty (30) for Suspected measles, Four (4) for NNT while One (1) each for cutaneous Leishmaniasis and CCHF.

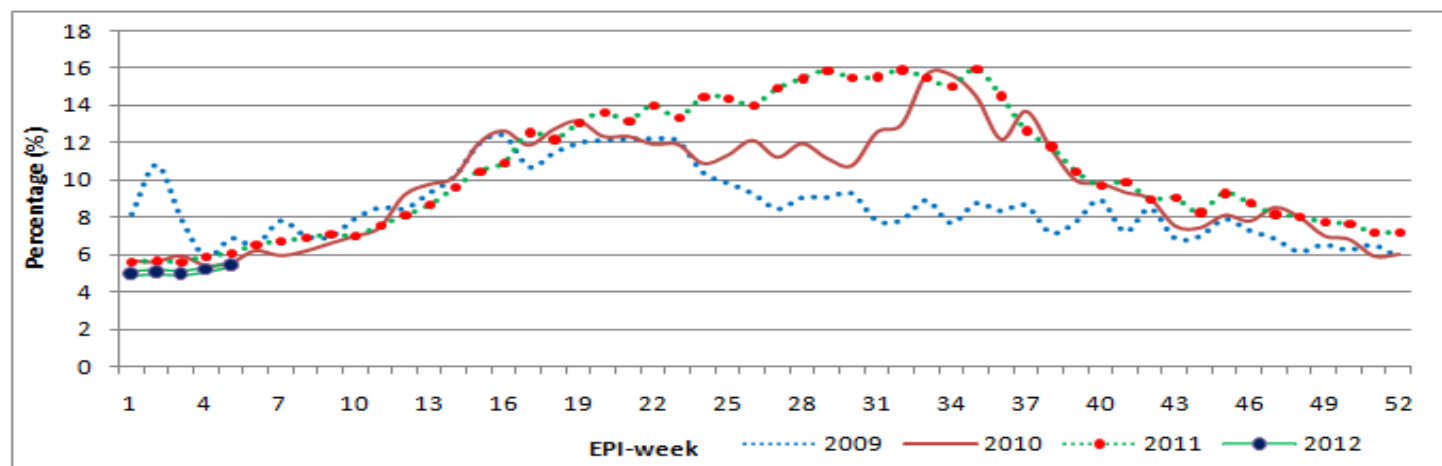
Compiled situation in Khyber Pakhtunkhwa & FATA

Figure-1: Four years trend of Acute Respiratory Infection in Khyber Pakhtunkhwa/FATA (2009, 2010, 2011 and 2012)



The above graph shows the trend of Acute Respiratory Infection cases out of total consultations reported to DEWS in 2009, 2010, 2011 and 2012 up until now.

Figure-2: Four years trend of Other Acute Diarrhea in Khyber Pakhtunkhwa/FATA (2009, 2010, 2011 and 2012)



The above graph shows the trend of Other Acute Diarrhea (OAD) cases out of total consultations reported to DEWS in 2009, 2010, 2011 and 2012 up until now.

Table-1: Leading causes of seeking health care in flood affected districts, compiled weekly reports

Disease name	Week-2	Week-3	Week-4	Week-5	Total Consultations (1 st Jan to 4 th Feb, 2012)
Acute Diarrhea	4,962 (5%)	4,424 (5%)	5,244 (5%)	4,176 (5%)	21,938 (5%)
Bloody Diarrhea	600 (1%)	592 (1%)	905 (1%)	631 (1%)	3,047 (1%)
Suspected Malaria	1,149 (1%)	858 (1%)	975 (1%)	694 (1%)	4,355 (1%)
Skin Diseases	2,297 (3%)	1,979 (2%)	2,469 (2%)	1,964 (3%)	10,351 (2%)
Pyrexia of Unknown Origin	3,320 (3%)	3,337 (4%)	3,738 (4%)	3,386 (4%)	16,148 (4%)
Acute Respiratory Infection	32,535 (33%)	27,759 (31%)	29,119 (29%)	23,442 (31%)	132,686 (31%)
Total Consultations	98,455	89,697	101,269	76,937	429,322

The above table shows compiled communicable diseases cases from weekly reports and proportional morbidity through eDEWS reported.

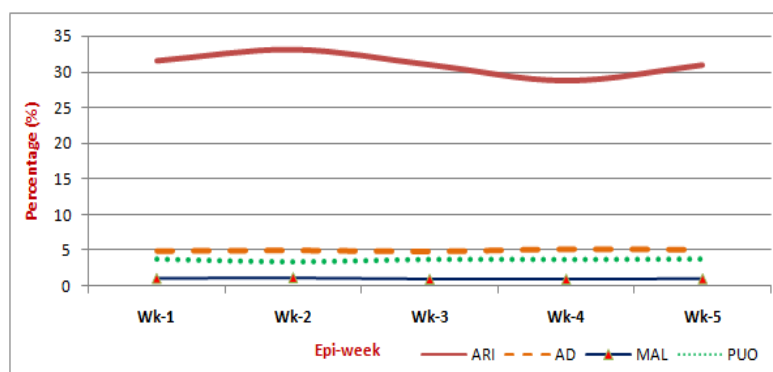
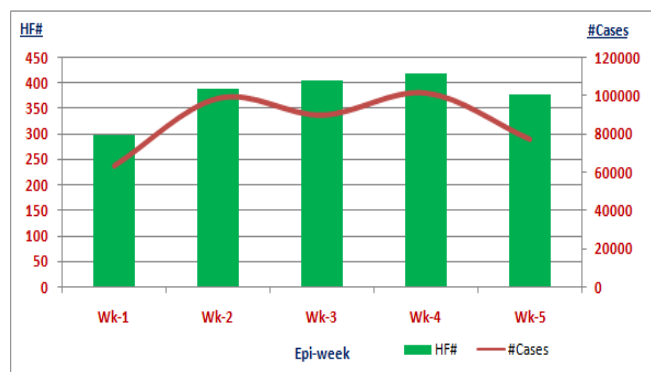
Since January 1, 2012, approximately **429,322** patient consultations have been reported to the eDEWS from Khyber Pukhtunkhwa province and Federal Administered Treaty Agency (FATA).

In this week 5, 2012 (29th January to 04th February, 2012) reports were received from 376 health centers and

the major causes for seeking health care by the communities in almost all of the regions were diarrheal diseases 4,176 (5%), acute respiratory infections 23,442 (31%), skin diseases 1,964 (3%) and suspected malaria 694 (1%).

Figure-3: Total number of HFs reported and consultations (Week no.1, 2012 to Week no.5, 2012)

Figure-4: Leading communicable diseases percentage trend in Khyber Pakhtunkhwa/FATA (Week no.1, 2012 to Week no.5, 2012)



Above figure 3 shows the number of health facilities and total number of consultation reported. Figure 4 shows the weekly percentage trend of ARI, Acute Diarrhea, suspected Malaria and Pyrexia of Unknown Origin in Khyber Pakhtunkhwa/FATA from week 1 to 5, 2012.

Table-2: Respiratory Diseases situation in Khyber Pakhtunkhwa and FATA

Respiratory Diseases	Week-4	Week-5
Upper Respiratory Infection	26,228	21,359
Pneumonia <5	1,721	1,192
Pneumonia >5	1,170	891

Figure-5:

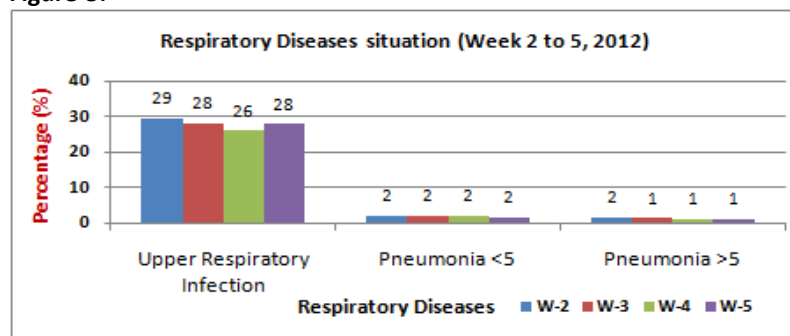
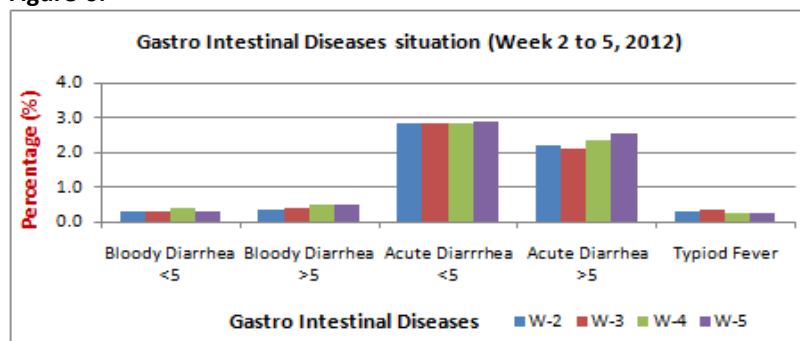


Table-3: Gastro Intestinal Diseases situation in Khyber Pakhtunkhwa and FATA

Gastro Intestinal Diseases	Week-4	Week-5
Bloody Diarrhea <5	412	239
Bloody Diarrhea >5	493	392
Acute Diarrhea <5	2,868	2,217
Acute Diarrhea >5	2,376	1,959
Typoid Fever	238	202

Figure-6:



Province Khyber Pakhtunkhwa:

Figure-7: Distribution of consultation by communicable diseases

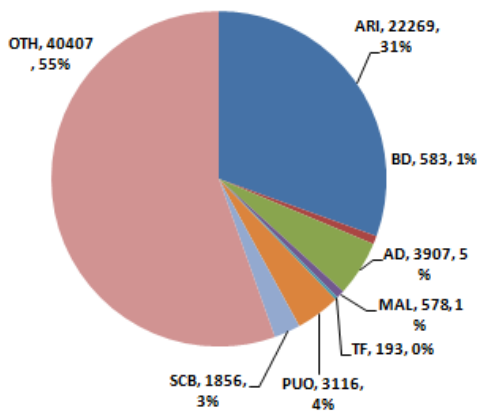
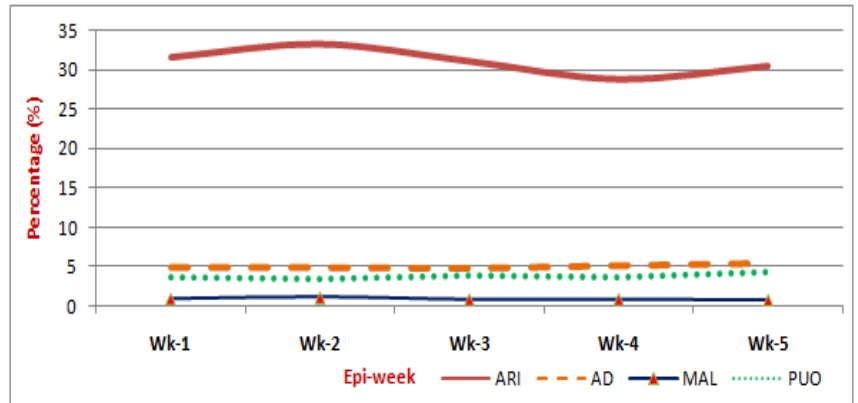
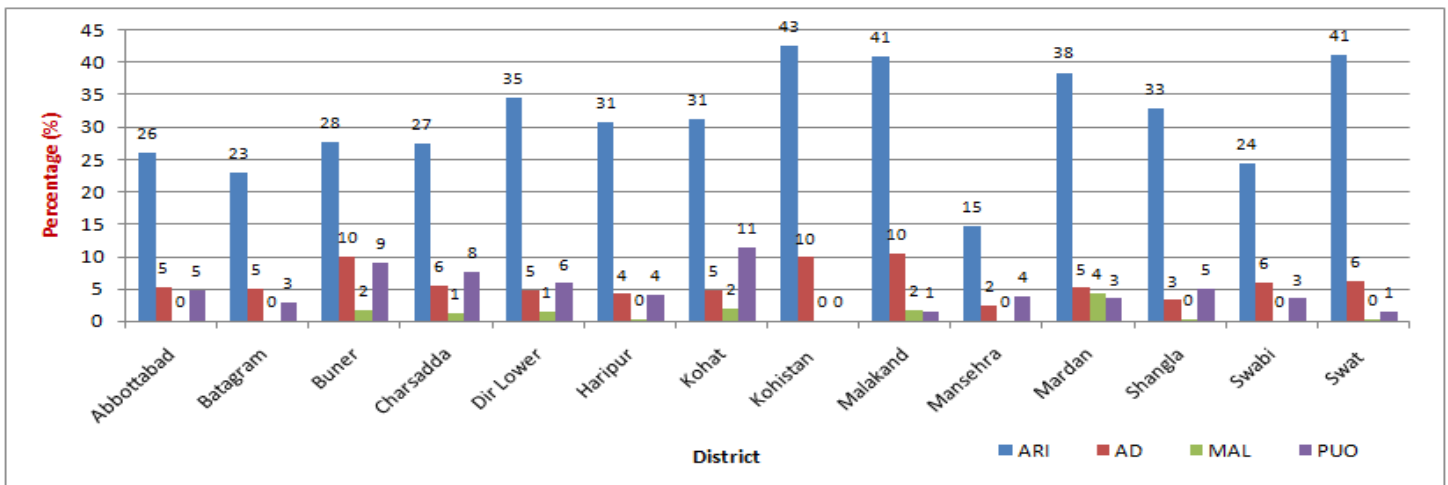


Figure-8: Weekly diseases (ARI, AD, MAL and PUO) percentage trend



- This week 14 districts reported to eDEWS from 355 health facilities with a total of 72,909 patients' consultations.
- Acute Respiratory Tract Infection (ARI) 22,269 cases reported were showing 2% increase in percentage as compared to week 4 patients' visits and accounted for 31% of the total consultations.
- Other Acute Diarrhea (AD) cases 3,907 (5%) and Suspected Malaria (Mal) cases 578 (1%) were reported.
- While Pyrexia of Unknown Origin (PUO) cases 3,116 (4%), Typhoid Fever (TF) cases 193 (<1%) and Scabies cases 1,856 (3%) were reported.

Figure-9: ARI, AD, MAL and PUO percentage situation of Khyber Pakhtunkhwa district wise in week 5, 2012



The above figure shows ARI, AD, MAL and PUO percentage situation district wise in week 5, 2012. During this week high percentage of ARI consultations were reported from district Kohistan 43% (978 cases), Swat 41% (4,531 cases), Malakand 41% (2,127 cases) and Mardan 39% (973 cases). Similarly high percentage of OAD cases were reported from district Malakand 11% (546 cases), Buner 10% (84 cases) and Kohistan 10% (226 cases). High percentages of suspected Malaria were reported from district Mardan 4% (109 cases) and Kohat 2% (83 cases). High percentage of Pyrexia of Unknown Origin (PUO) consultations were reported from district Kohat 11% (463 cases), Buner 9% (75 cases) and Charsadda 8% (690 cases).

Current week's Alert/Outbreak in Khyber Pakhtunkhwa:

32 alerts were reported in this week, Twenty nine (29) for Suspected measles while One (1) each for cutaneous Leishmaniasis, NNT and CCHF

S. No.	Date Investigated	Suspected Disease	District	Location	<5 M	>5 M	<5 F	>5 F	Sample	Positive	Cases	Death
1	31-Jan-12	Measles	Lower Dir	Village Matak, UC Khazana, Tehsil Munda.	3	1	1	0	1	r	5	0
2	01-Feb-12	Measles	Lower Dir	Village Janpasa, UC Miskanay, Tehsil Samar Bagh.	1	1	1	0	1	r	3	0
3	03-Feb-12	Measles	Lower Dir	Village Barora, UC Badwan, Tehsil Adenzai	0	0	2	0	1	r	2	0
4	03-Feb-12	Leishmaniasis	Lower Dir	Village Pashat, Chilargam, Bajour Agency.	0	1	0	0	0	Clinically Diagnosed	1	0
5	02-Feb-12	Measles	swat	Village Zore Barthana, UC Barthana, Tehsil Matta	1	0	0	0	1	r	1	0
6	02-Feb-12	Measles	Swat	Village Tahir Abad Mingora near Talha Jumat, UC Band, Tehsil Babuzai	0	0	1	0	1	r	1	0
7	02-Feb-12	Measles	Swat	Village and UC Devlai, Tehsil Kabal	0	0	1	0	1	r	1	0
8	02-Feb-12	Measles	Swat	Village Chedari Tootano Bandai, UC Tootano Bandai, Tehsil Kabal	1	0	0	0	1	r	1	0
9	03-Feb-12	Measles	Swat	Village Algrama Miaganocham, UC Hazar, Tehsil Kabal	0	0	1	0	1	r	1	0
10	03-Feb-12	Measles	Swat	Village Shikho aligrama kalakaley raod, Tehsil Kabal	0	0	1	0	1	r	1	0
11	03-Feb-12	Measles	Swat	Village UC and Tehsil Barikot	0	1	0	0	1	r	1	0
12	03-Feb-12	Measles	Swat	Village Nengolai Ghundai, UC Bara Bandai, Tehsil Kabal	0	1	0	0	1	r	1	0
13	30-Jan-12	CCHF	Abbottabad	Dewalmanal	0	1	0	0	1	r	1	0
14	02-Feb-12	Measles	Buner	najdara malak pur tehsil dagar buner	0	1	0	1	2	r	2	0
15	31-Jan-12	Measles	Nowshera	Village Khaishki Bala District	1	0	0	0	1	r	1	0
16	31-Jan-12	Measles	Nowshera	Village Bar Kalay Ahmed Gul Koroona Khaishki	0	1	0	0	1	r	1	0
17	31-Jan-12	Measles	Nowshera	Village Khaishki Bala	0	0	1	0	1	r	1	0
18	01-Feb-12	Measles	Kohat	Village Jungle Khel	0	0	0	1	1	r	1	0
29	01-Feb-12	Measles	Peshawar	H.no 63, Street no 2 Shami Road	0	0	1	0	1	r	1	0
20	02-Feb-12	Measles	Swat	Mohalla Malik Hafiz Qabal	0	0	1	0	1	r	1	0
21	02-Feb-12	Measles	Charsadda	Mohalla Naia Kanday Prang	1	0	0	0	0	r	1	0
22	30-Jan-12	NNT	D. I. Khan	Village Roda, UC Malanna, Tehsil Paroa	1	0	0	0	0	-	1	0
23	03-Feb-12	Measles	D. I. Khan	Din Pur Chungi, Din Pur	1	0	0	0	1	r	1	0
24	03-Feb-12	Measles	D. I. Khan	Lunda Shareef, Paroa	0	0	1	0	1	r	1	0

25	03-Feb-12	Measles	D. I. Khan	Bakhtawar Abad, Kotli Imam	1	0	0	0	1	r	1	0
26	03-Feb-12	Measles	D. I. Khan	Shaikh Yousaf	1	0	0	0	1	r	1	0
27	03-Feb-12	Measles	D. I. Khan	Nasir Bagh, Arra Road	1	0	0	0	1	r	1	0
28	30-Jan-12	Measles	Haripur	Village Kallis, UC Dheenda	0	0	1	0	1	r	1	0
29	02-Feb-12	Measles	Haripur	Village Bandi Sher khan	2	0	0	0	1	r	2	0
30	02-Feb-12	Measles	Nowshera	Shamilaat Laar, Tordher, UC: Gandheri	0	0	1	0	1	r	1	0
31	02-Feb-12	Measles	Shangla	Village Alagram/UC Puran	1	4	1	3	4	r	9	0
32	03-Feb-12	Measles	Shangla	Village Derai Pitao/UC pirabad	0	0	1	0	1	r	1	0

Federal Administrated Tribal Agency (FATA):

Figure-10: Distribution of consultation by communicable diseases

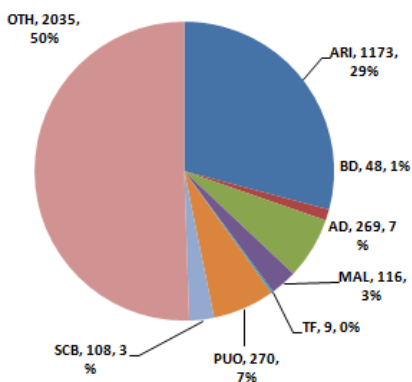
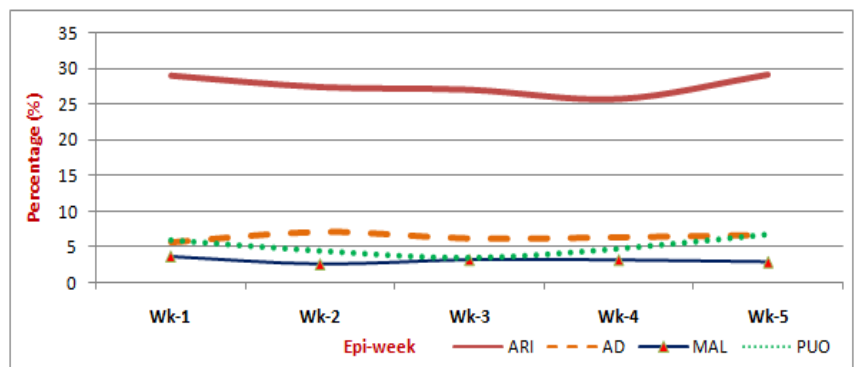
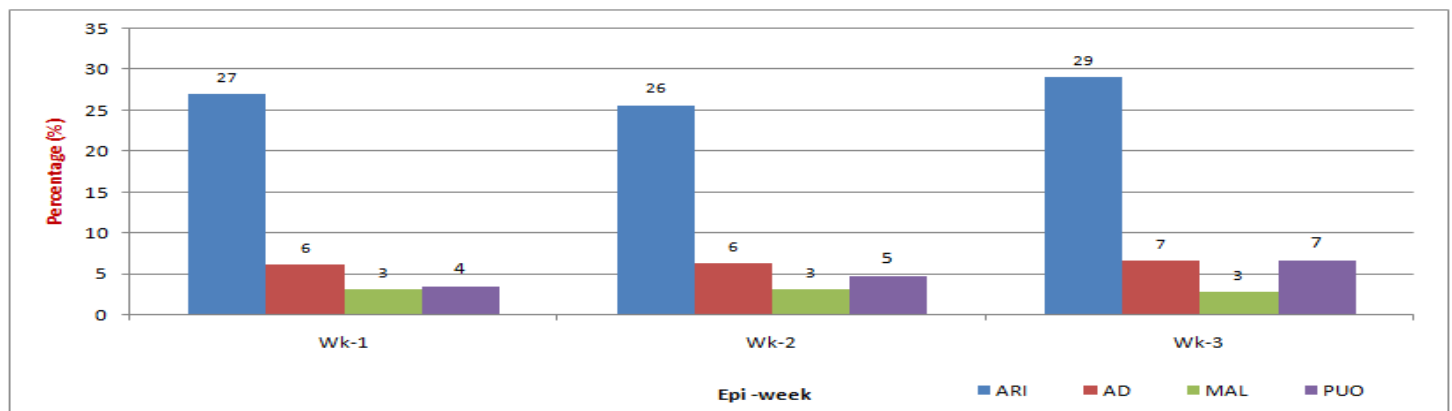


Figure-11: Weekly diseases (ARI, AD, MAL and PUO) percentage trend



- This week, 21 health facilities reported from 1 agency to eDEWS with a total of 4,028 patients' consultations.
- Acute Respiratory Tract Infection (ARI) 1,173 cases reported were showing 3% increase in percentage as compared to week 4 patients' visits and accounted for 29% of the total consultations.
- Other Acute Diarrhea (AD) cases 269 (7%) and Suspected Malaria (Mal) cases 116 (3%) were reported.
- While Pyrexia of Unknown Origin (PUO) cases 270 (7%), Typhoid Fever (TF) cases 9 (<1%) and Scabies cases 108 (3%) were reported.

Figure-12: ARI, AD, MAL and PUO percentage situation of Federal Administered Treaty Agency (FATA) in week 5, 2012



The above figure 12 shows ARI, AD, MAL and PUO percentage situation in last three weeks. During week 5, 2012 high percentage of ARI consultations were reported as compared to previous weeks. Similarly Other Acute Diarrhoea (OAD) and Pyrexia Unknown Origin (PUO) are showing 1% and 2% consecutively increase as compared to week 4.

Current week's Alert/Outbreak in FATA:

Four (4) alerts were reported in this week, One for suspected Measles and Three (3) for NNT.

S. No.	Date Investigated	Suspected Disease	Agency	Location	<5 M	>5 M	<5 F	>5 F	Sample	Positive	Cases	Death
1	31-Jan-12	Measles	Bajaur Agency	village Dara of Tehsil Mamoon	0	0	1	0	1	r	1	0
2	31-Jan-12	NNT	Bajaur Agency	village Zagai of Tehsil Salarzai	1	0	0	0	1	-	1	0
3	31-Jan-12	NNT	Bajaur Agency	village Damadola-Landai sha of Tehsil Mamoon	0	0	1	0	1	-	1	0
4	01-Feb-12	NNT	Bajaur Agency	village Badanu kali sha of Tehsil Mamoon	0	0	1	0	1	-	1	0

Figure-13: Total number of alerts/outbreak situation in KPK & FATA through eDEWS System (Week 5, 2012)

