

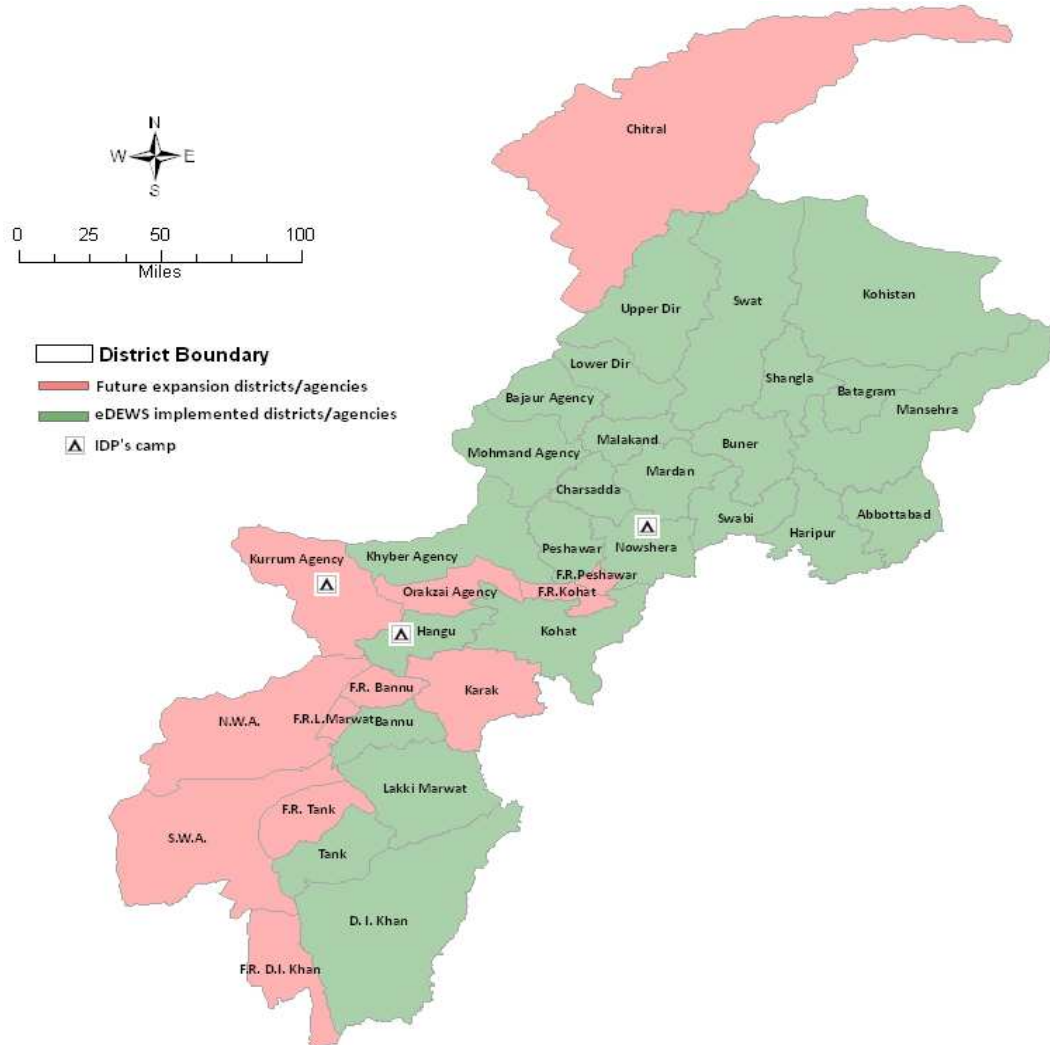


Weekly **Epidemiological** Bulletin

Electronic Disease Early Warning System & Response (eDEWS)

in Khyber Pakhtunkhwa and FATA

Epidemiological Week-16 (15th April to 21st April, 2012)



Priority diseases under surveillance in eDEWS

Respiratory Diseases

Acute (upper) respiratory infections
 Pneumonia <5 years
 Pneumonia >5 years
 Suspected Diphtheria
 Suspected Pertussis

Gastro Intestinal Diseases

Acute Watery Diarrhea <5 year
 Acute Watery Diarrhea >5 year
 Bloody Diarrhea <5 years
 Bloody Diarrhea >5 years
 Other Acute Diarrhea <5 years
 Other Acute Diarrhea >5 years
 Suspected Enteric/Typhoid Fever

Other Communicable

Suspected Malaria
 Suspected Meningitis
 Suspected Dengue Fever
 Suspected Viral Hemorrhagic Fever
 Pyrexia Of Unknown Origin

Vaccine Preventable

Suspected Measles
 Suspected Acute Viral Hepatitis
 Chronic Viral Hepatitis
 Neonatal Tetanus
 Acute Flaccid Paralysis

Skin Disease

Scabies
 Cutaneous Leishmaniasis

Injuries /Poisoning

Injuries
 Snake bite

Other unusual diseases

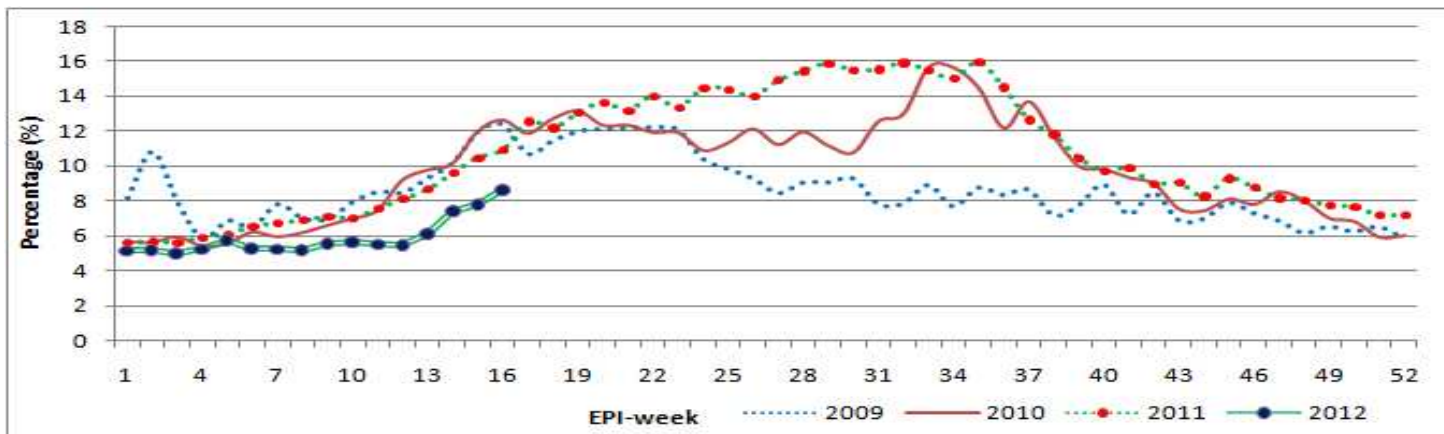
Other unusual diseases

HIGHLIGHTS

- 18 districts and 3 agencies provided surveillance data to the eDEWS this week from 507 health facilities on time.
- A total of 143,311 consultations were reported through eDEWS of which 21% or 29,566 cases were Acute Upper Respiratory Infection, is still the highest cause of morbidity of total consultations were showing no change in percentage as compared to week 15.
- Other Acute Diarrhoea shared 9% or 12,355 cases of the total consultations showing 1% increase in percentage as compared to previous week.
- Pyrexia of Unknown Origin accounted for 5% or 6,951 cases out of total consultations.
- Skin Infection (Skin Inf.) reported at 3% or 3,665 cases and Typhoid Fever comprised only 0.3% or 474 cases out of total consultations.
- A total of 79 alerts including 4 measles and 1 scabies outbreaks were received. 68 alerts for suspected measles, 4 for NNT, 3 for leishmaniasis while 1 each for AFP, bloody diarrhoea, Tetanus and suspected DHF.

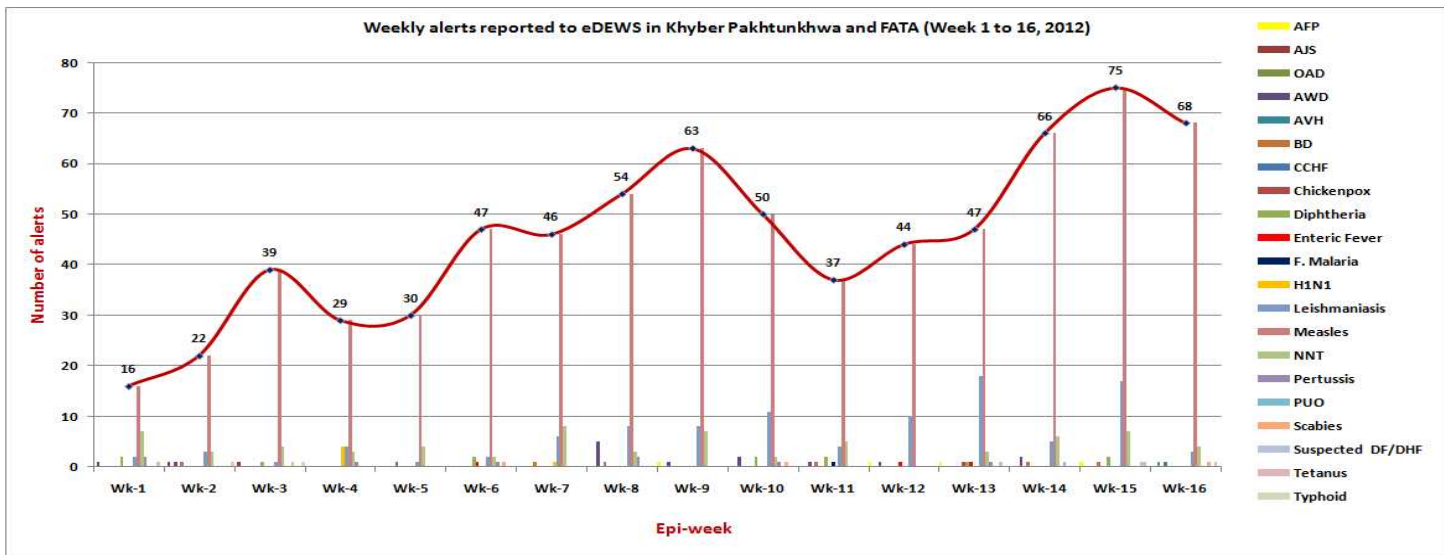
Compiled situation in Khyber Pakhtunkhwa & FATA

Figure-1: Four years trend of Other Acute Diarrhea (OAD) in Khyber Pakhtunkhwa/FATA (2009, 2010, 2011 and 2012)



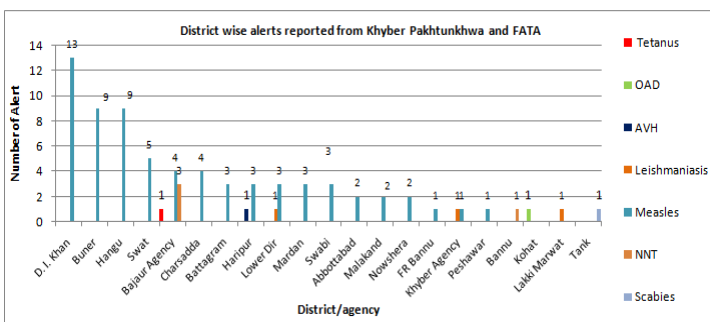
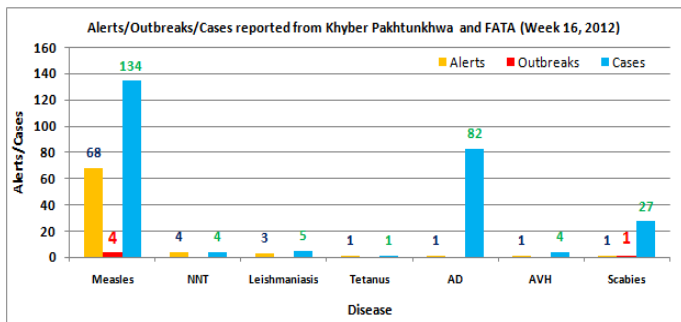
The above graph shows the trend of Other Acute Diarrhoea (OAD) cases out of total consultations reported to DEWS in 2009, 2010, 2011 and 2012 up until now. OAD percentage trend in 2012 year is showing increase due to seasonal effect. In this week 16, 2012 OAD consultations shows 9% or 12,355 cases of total cases which shows 1% increase in percentage as compared to week 15.

Figure-2: Alerts reported in Khyber Pakhtunkhwa/FATA (From week 1 to 16, 2012)



The above graph shows the different reported alerts to DEWS from week 1 to 16, 2012. A cumulative figure for the current year is 986 alerts (2,221 cases) including of 70 outbreaks were reported. Measles alerts are leading in Khyber Pakhtunkhwa and FATA with 744 alerts (1,360 cases) including 54 outbreaks. Followed by Leishmaniasis 103 alerts (309 cases) including 5 outbreaks, Neonatal Tetanus 68 alerts (70 cases), AWD 13 alerts (31 cases), Diphtheria 12 alerts (12 cases), Pertussis 8 alerts (12 cases), Bloody diarrhoea 6 alerts (31 cases) including 3 outbreaks, Typhoid 5 alerts (47 cases) including 3 outbreaks, H1N1 5 alerts (11 cases) including 1 outbreak, Scabies 4 alerts (206 cases) including 3 outbreaks, AFP 4 alerts (4 cases), AJS 3 alerts (28 cases) including 1 outbreak, Tetanus 3 alerts (3 cases), suspected Dengue Fever/Dengue Hemorrhagic Fever 2 alerts (6 cases), Acute Diarrhea 1 alert (82 cases), suspected Acute Viral Hepatitis 1 alert (4 cases), Chickenpox 1 alert (2 cases), CCHF 1 alert (1 case), Falciparum Malaria 1 alert (1 case) and Pyrexia Unknown Origin 1 alert (1 case) were shared.

Figure-3: Number of alerts and alert cases reported in Khyber Pakhtunkhwa/FATA (Week 16, 2012)



The above left side graph shows different alerts and their cases reported in KP/FATA and right side graph shows different alerts shared by district wise in week 16, 2012. In this week a total of **79 alerts (257 cases)** including **4 measles and 1 scabies outbreaks** were reported. High number of alerts reported from district D.I. Khan 13 measles alerts (13 cases) were shared, followed by Buner 9 measles alerts (14 cases including 1 outbreak), Hangu 9 measles alerts (10 cases), Bajaur 8 alerts (8 cases including 4 measles, 3 NNT and 1 Tetanus), Swat 5 measles alerts (5 cases), Charsadda 4 measles alerts (4 cases), Haripur 4 alerts (52 cases including 3 measles alerts (48 cases including 2 outbreaks) and 1 AVH alert (4 cases)), Lower Dir 4 alerts (6 cases including 3 measles and 1 leishmaniasis alerts), Battagram 3 measles alerts (3 cases), Mardan 3 measles alerts (5 cases), Swabi 3 measles alerts (3 cases), Abottabad 2 measles alerts (2 cases), Khyber 2 alerts (14 cases including 1 leishmaniasis alert and 1 measles outbreak of 13 cases), Malakand 2 measles alerts (3 cases), Nowshera 2 measles alerts (2 cases), Bannu 1 alert (1 case), FR Bannu 1 measles alert (1 case), Kohat 1 OAD alert (82 cases from sporadic areas), Lakki Marwat 1 leishmaniasis alert (1 case), Peshawar 1 measles alert (1 case) and Tank 1 Scabies outbreak (27 cases) were shared and responded.

❖ **5 outbreaks (measles 4 and scabies 1) were reported in this week.**

- ✓ 2 measles outbreaks were shared from Haripur.
 - A total of 17 measles cases, an outbreak was reported from BHU STC3. Initially an alert of suspected measles case was generated by BHU STC3 from afghan refugee camp 6. The patient presented to BHU with bronchitis and rash. Suspected case was given Vit A. Blood sample was taken and sent to NIH. Active surveillance was conducted in the area. 16 more cases were identified who had developed measles in past 1 month. During active surveillance and record analysis, 1132 children were assessed for vaccination status. 338 children were missing measles 1 vaccine and 173 children were missing measles 2 vaccine. Missing children were referred to nearest health facility for completion of vaccination. Health education session on prevention and spread was conducted for the affected families. CHWs were involved in active case finding. EDO Health and Save the children were informed about the outbreak.
 - Other outbreak of 29 measles cases was reported from BHU STC1. Initially an alert of suspected measles case was generated by BHU STC 1 from Afghan Refugee camp 2. Suspected case was given Vit A. Blood sample was taken and sent to NIH. Active surveillance was conducted in the area. 28 more cases were identified who had developed measles in past 1 month. On active surveillance and record analysis, 698 children were assessed for vaccination status in the surrounding area. 35 children were missing measles 2 vaccine and 83 children missing measles 1 vaccine. CHWs were involved in active case finding. EPI coordinator and save the children were informed about the outbreak. Missing children were referred to nearest health facility for completion of vaccination. Health education on prevention and spread was conducted for the affected families.
- ✓ 1 measles outbreak was shared from Buner
 - An outbreak of 6 measles cases was reported from village Charnee near Kalpani. Initially 2 patients examined by local MO classical signs noted patients presented to BHU. Active surveillance done by health staff 4 more cases found on active surveillance by BHU staff, all 6 cases were found to be no vaccinated and didn't have BCG scars or EPI cards. 6 adjacent houses were screened for more cases, no more cases found. 12 children were assessed in adjacent homes all had received all vaccines including first dose of measles. Sample taken from 2 patients. Further assessment will be done by SO and EPI coordinator and mass vaccination campaign will be planned for this isolated population of 6 houses.
- ✓ 1 measles outbreak was shared from Khyber
 - A total of 13 measles cases an outbreak including 2 deaths were reported from village Mashoom Baba Tatara. The cases and a death were reported by Akhtar Munir (MT BHU Kambila) on 18th Apr, 2012 at night by phone call. The Agency Surgeon, FSMO and PPHI were informed. An investigation team including PPHI monitoring officer was formed for the affected area. Another death was occurred on the day the investigation team arrived there. On active surveillance 13 cases including 2 deaths of suspected measles were identified in whom 6 seriously ill children were referred to the KTH Peshawar. Vitamin A given to the measles cases. Mass measles vaccinations of 130 children were done. Health education conducted. Blood samples of two suspected cases taken and sent to NIH Islamabad. Report shared with DOH and PPHI.
- ✓ 1 scabies outbreak was shared from Tank
 - A total of 27 scabies cases an outbreak was reported from Barakhel Tank. Initially an alert received through BHU Ranwal. Surveillance performed. 27 Cases examined. Health and hygiene sessions conducted with households and community, emphasizing on the preventive measures. Nedax lotions were donated. Hygiene kits were also distributed. Report submitted to EDO H.

Table-1: Leading causes of seeking health care in flood affected districts, compiled weekly reports

Disease name	Week-13	Week-14	Week-15	Week-16	Total Consultations (1 st Jan to 21 st Apr, 2012)
Acute Diarrhoea	9,441 (6%)	10,943 (7%)	10,501 (8%)	12,355 (9%)	116,927 (6%)
Bloody Diarrhoea	1,089(1%)	1,080 (1%)	977 (1%)	919 (1%)	13,707 (1%)
Suspected Malaria	2,400 (2%)	1,941 (1%)	2,259 (2%)	2,236 (2%)	24,045 (1%)
Skin Diseases	4,177 (3%)	4,311 (3%)	3,862 (3%)	3,665 (3%)	52,882 (3%)
Pyrexia of Unknown Origin	7,145 (5%)	7,419 (5%)	6,577 (5%)	6,951 (5%)	89,032 (5%)
Acute Respiratory Infection	36,261 (23%)	33,368 (23%)	28,412 (21%)	29,566 (21%)	536,712 (27%)
Total Consultations	154,877	147,848	135,156	143,311	1,968,144

The above table shows compiled communicable diseases cases from weekly reports and proportional morbidity through eDEWS reported.

Since January 1, 2012, approximately 1,968,144 patient consultations have been reported to the eDEWS from Khyber Pakhtunkhwa province and Federal Administered Tribal Areas (FATA).

In this week 16, 2012 (15th April to 21st April, 2012) reports were received from 507 health centres and the major causes for seeking health care by the communities in almost all of the regions were diarrhoeal diseases 12,355 cases or 9%, acute respiratory infections 29,566 cases or 21%, skin diseases 3,665 cases or 3% and suspected malaria 2,236 cases or 2%.

Figure-4: Total number of HF# reported and consultations (Week no.1 to 16, 2012)

Figure-5: Leading communicable diseases percentage trend in Khyber Pakhtunkhwa and FATA (Week no.1 to 16, 2012)

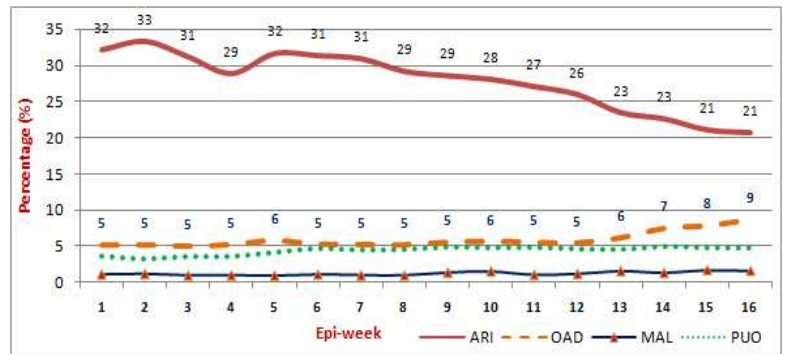
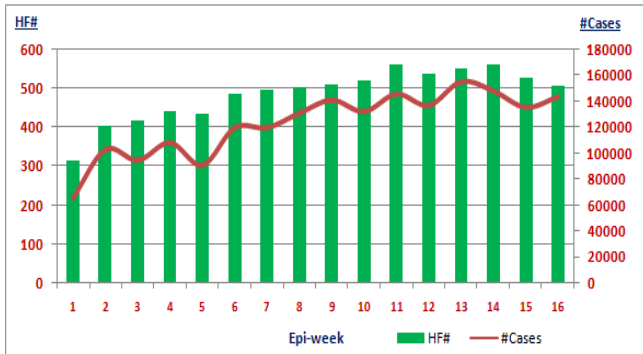


Figure 4 shows the number of health facilities and total number of consultations reported. Figure 5 shows the weekly percentage trend of ARI, Other Acute Diarrhoea, suspected Malaria and Pyrexia of Unknown Origin in Khyber Pakhtunkhwa and FATA from week 1 to 16, 2012. ARI percentage is showing decrease and OAD showing increase since week 12.

Table-2: Respiratory Diseases situation in Khyber Pakhtunkhwa and FATA

Respiratory Diseases	Week-15	Week-16
Upper Respiratory Infection	26,575	27,913
Pneumonia <5	995	866
Pneumonia >5	842	787

Figure-6:

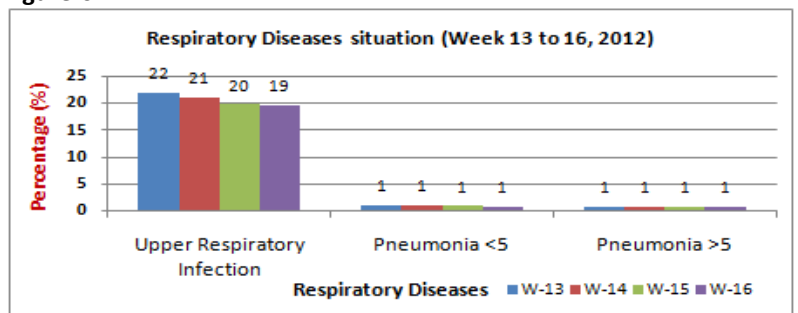


Table 2 shows the last two weeks Acute Respiratory Tract Infection (Upper Respiratory Tract Infection and Lower Respiratory Tract Infection (Pneumonia)) consultations comparison and figure 5 shows the last four weeks percentage situation of ARI.

Table-3: Gastro Intestinal Diseases situation in Khyber Pakhtunkhwa and FATA

Gastro Intestinal Diseases	Week-15	Week-16
Bloody Diarrhea <5	368	392
Bloody Diarrhea >5	609	527
Other Acute Diarrhea <5	5,576	6,543
Other Acute Diarrhea >5	4,925	5,812
Typhoid Fever	788	474

Figure-7:

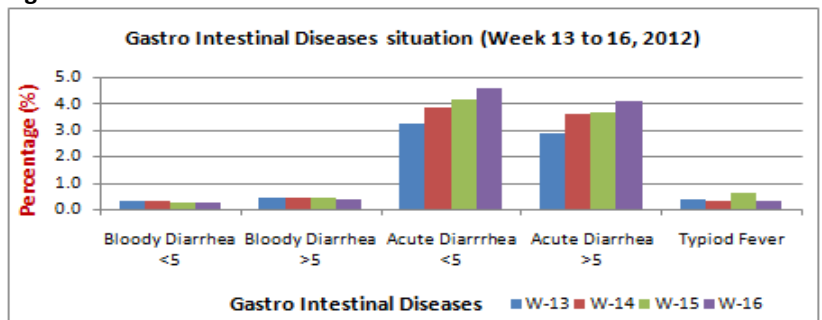


Table 3 shows the last two weeks cases of Gastro Intestinal Diseases and figure 6 shows the percentage of last four weeks.

Province Khyber Pakhtunkhwa:

Figure-8: Distribution of consultations by communicable diseases

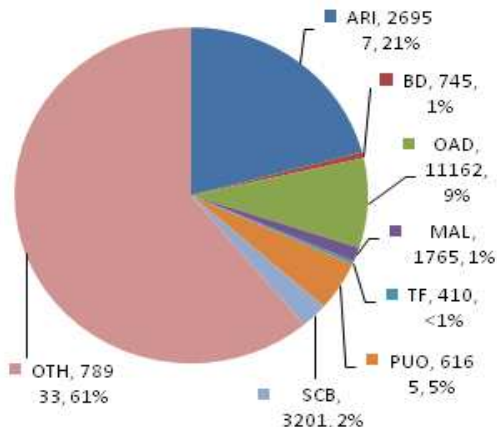
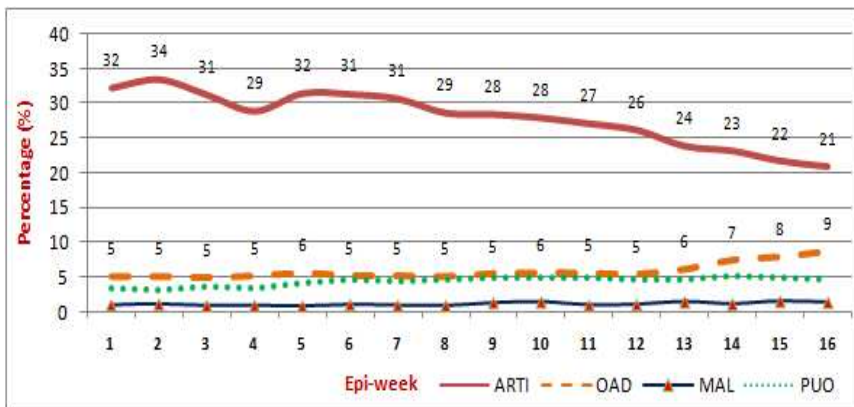
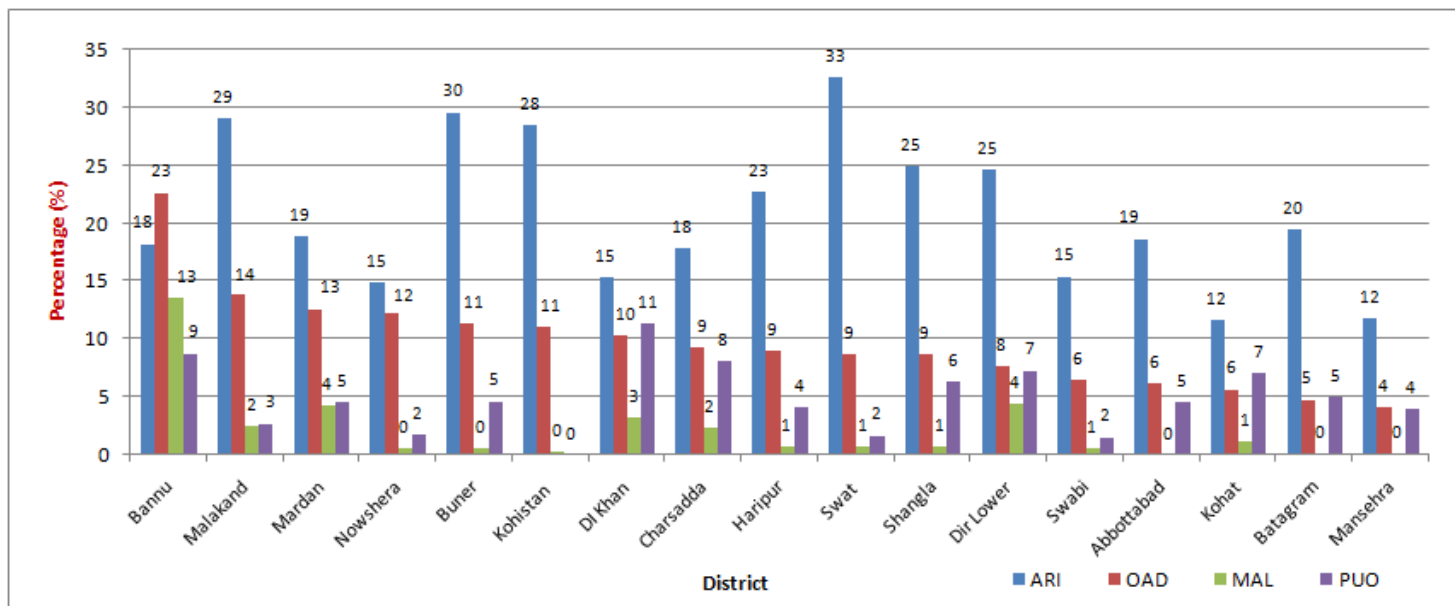


Figure-9: Weekly diseases (ARI, OAD, MAL and PUO) percentage trend



- Figure 8 shows distribution of consultations by communicable diseases in week 16, 2012 and figure 9 shows weekly percentage trend of ARI, OAD, MAL and PUO from week 1 to 16, 2012.
- This week 18 districts reported to eDEWS from 457 health facilities with a total of 129,338 patients’ consultations.
- Acute Respiratory Tract Infection 26,957 cases reported were showing 1% decrease in percentage as compared to week 15 patients’ visits and accounted for 21% of the total consultations.
- Other Acute Diarrhea cases 11,162 or 9% showing 1% increase in percentage as compared to previous week and suspected Malaria 1,765 cases or 1% were reported.
- While Pyrexia of Unknown Origin cases 6,165 or 5% showing no change in percentage since week 6, 2012.
- Typhoid Fever (TF) cases 410 or <1% and Scabies cases 3,201 or 2% were reported.

Figure-10: ARI, OAD, MAL and PUO percentage situation of Khyber Pakhtunkhwa district wise in week 16, 2012



The above figure shows ARI, OAD, MAL and PUO percentage situation district wise in week 16, 2012. During this week high percentage of OAD consultations were reported from district Bannu 23% (277 cases), followed by district Malakand 14% (931 cases), Mardan 13% (791 cases), Nowshera 12% (773 cases), Buner 11% (869 cases), Kohistan 11% (327 cases) and D.I. Khan 10% (678 cases). Similarly high percentage of ARI cases were reported from district Swat 33% (5,134 cases), Buner 30% (2,274 cases), Malakand 29% (1,953 cases) and Kohistan 28% (839 cases). High percentages of suspected Malaria were reported from district Bannu 13% (165 cases), Lower Dir 4% (211 cases), Mardan 4% (464 cases) and D.I. Khan 3% (207 cases). High percentage of Pyrexia of Unknown Origin (PUO) consultations were reported from district D.I. Khan 11% (750 cases), Bannu 9% (107 cases), Charsadda 8% (1,102 cases), Lower Dir 7% (354 cases), Kohat 7% (644 cases) and Shangla 6% (306 cases).

Current week's Alert/Outbreak in Khyber Pakhtunkhwa:

➤ A total of 68 alerts including 3 measles, 1 scabies outbreaks were received. 62 alerts for suspected measles, 2 for leishmaniasis while 1 each for NNT, AVH, OAD and Scabies.

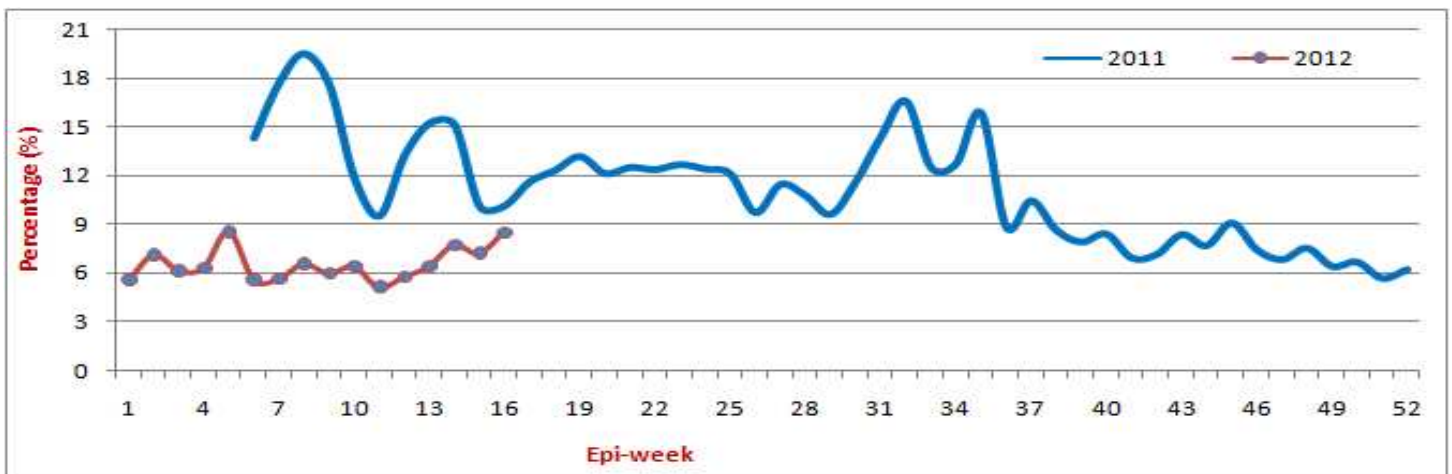
S. No.	Date Investigated	Suspected Disease	District	Location	<5 M	>5 M	<5 F	>5 F	Sample	Positive	Cases	Death
1	16-Apr-12	Measles	Abbottabad	Abbasia Coloney, Nawansher	0	0	1	0	1	r	1	0
2	17-Apr-12	Measles	Abbottabad	Sultanpur, Havallian	0	0	0	1	1	r	1	0
3	17-Apr-12	NNT	Bannu	Village karadam kala	0	0	1	0	0	r	1	0
4	17-Apr-12	Leishmaniasis	Lakki Marwat	Mohallah Zafar Khel, Village Zangi Khel	0	1	0	0	0	r	1	0
5	17-Apr-12	Measles	Battagram	Village Baba Gee Mor	2	0	0	0	1	r	1	0
6	19-Apr-12	Measles	Battagram	Village Landay, Aguz banda, UC Peshoor	0	0	1	0	1	r	1	0
7	20-Apr-12	Measles	Battagram	Village Gijkot, Neelishang, UC Rajdhari	0	0	1	0	1	r	1	0
8	17-Apr-12	Measles	Charsadda	village Derakai	0	0	1	0	1	r	1	0
9	18-Apr-12	Measles	Charsadda	village Haroon Dheray	1	0	0	0	1	r	1	0
10	18-Apr-12	Measles	Charsadda	Munda camp	1	0	0	0	1	r	1	0
11	16-Apr-12	Measles	D. I. Khan	Sar garah, Ramak, UC Miran, Tehsil Paroa	0	1	0	0	1	r	1	0
12	16-Apr-12	Measles	D. I. Khan	Village Niaz Abad, Pahar Pur	1	0	1	0	2	r	1	0
13	16-Apr-12	Measles	D. I. Khan	Village Kotla Lodhian, Tehsil Pahar Pur	0	0	1	0	1	r	1	0
14	17-Apr-12	Measles	D. I. Khan	Village Tarang, Tank Road	1	0	0	0	1	r	1	0
15	17-Apr-12	Measles	D. I. Khan	Qureshi Morr, Muryali	1	0	0	0	1	r	1	0
16	17-Apr-12	Measles	D. I. Khan	Mandhra Saidan	1	0	0	0	1	r	1	0
17	17-Apr-12	Measles	D. I. Khan	VIP Colony, City 01	1	0	0	0	1	r	1	0
18	17-Apr-12	Measles	D. I. Khan	Village Tappa, Ramak, Tehsil Paroa	1	0	0	0	1	r	1	0
19	19-Apr-12	Measles	D. I. Khan	Eid Gah Road	1	0	0	0	1	r	1	0
20	19-Apr-12	Measles	D. I. Khan	Village Shor Kot	0	0	1	0	1	r	1	0
21	20-Apr-12	Measles	D. I. Khan	Mohalla Piran Wala, Atal Shareef	0	1	0	0	1	r	1	0
22	20-Apr-12	Measles	D. I. Khan	Rehmat Khel, Paniala, Tehsil Pahar PuR	1	0	0	0	1	r	1	0
23	20-Apr-12	Measles	D. I. Khan	Kulachi	1	0	0	0	1	r	1	0
24	16-Apr-12	AVH	Haripur	Khanpur city	0	3	0	1	1	r	4	0
25	17-Apr-12	Measles	Haripur	Afghan Refugee camp 6	7	5	3	2	1	r	17	0
26	18-Apr-12	Measles	Haripur	Afghan Refugee camp 2	7	10	5	7	1	r	29	0
27	17-Apr-12	Measles	Haripur	Village Morhree, UC Hassanabdal	0	0	2	0	1	r	2	0
28	12-Apr-12	Measles	Hangu	UC Ganjiano Kalay	0	0	1	0	1	r	1	0
29	12-Apr-12	Measles	Hangu	UC Lakhtee Banda	1	1	0	0	2	r	2	0

30	12-Apr-12	Measles	Hangu	UC Muhammad Khawaja	1	0	0	0	1	r	1	0
31	12-Apr-12	Measles	Hangu	Village Yakho Kandow, UC Samana in Lower Aurakzai Agency	1	0	0	0	1	r	1	0
32	14-Apr-12	Measles	Hangu	Village Azeem Banda, UC Doaba	1	0	0	0	1	r	1	0
33	14-Apr-12	Measles	Hangu	UC Lakhtee Banda	0	0	1	0	1	r	1	0
34	14-Apr-12	Measles	Hangu	UC Ganjiano Kalay	0	0	1	0	1	r	1	0
35	14-Apr-12	Measles	Hangu	UC Sarozai	1	0	0	0	1	r	1	0
36	14-Apr-12	Measles	Hangu	UC Kach Banda	0	0	1	0	1	r	1	0
37	18-Apr-12	AD	Kohat	Union Council Muhammad Zai	0	0	0	0	0	r	82	0
38	18-Apr-12	Measles	Lower Dir	Village Dinjaray, UC Samar Bagh, Tehsil Samar Bagh	1	0	0	0	1	r	1	0
39	18-Apr-12	Measles	Lower Dir	Village Shpanno Kassai, UC Samar Bagh, Tehsil Samar Bagh	0	0	1	0	1	r	1	0
40	19-Apr-12	Measles	Lower Dir	Village Asman Banda, UC Samar Bagh, Tehsil Samar Bagh	0	1	0	0	1	r	1	1
41	20-Apr-12	Leishmaniasis	Lower Dir	Afghan Refugees Camp, Village Taimer, UC Balambat, Tehsil Balambat	0	2	1	0	0	r	3	0
42	18-Apr-12	Measles	Malakand	Batkhela	1	0	1	0	1	r	2	0
43	18-Apr-12	Measles	Malakand	Khar	1	0	0	0	1	r	1	0
44	17-Apr-12	Measles	Mardan	Mohalla Banaras Khan, Chatto, UC Sikandrey	0	0	1	0	1	r	1	0
45	18-Apr-12	Measles	Mardan	Village Aman Ghar, UC Aman Ghar	1	0	0	0	1	r	1	0
46	18-Apr-12	Measles	Mardan	Village Shawaband, UC Katlang, Mardan	2	0	1	0	1	r	3	0
47	16-Apr-12	Measles	Nowshera	Loggar camp Azakhel	1	0	0	0	1	r	1	0
48	16-Apr-12	Measles	Peshawar	Mohalla Akakhel Phandu	0	0	1	0	1	r	1	0
49	17-Apr-12	Measles	Nowshera	Mohalla Shahmeer Gari	0	0	1	0	1	r	1	0
50	17-Apr-12	Measles	Charsadda	Mohalla Kafra Koroona Tangi Road	0	0	2	0	1	r	1	0
51	17-Apr-12	Measles	Swabi	Jehangira	1	0	0	0	1	r	1	0
52	17-Apr-12	Measles	Swabi	BHU Shahmansoor	1	0	0	0	1	r	1	0
53	18-Apr-12	Measles	Swabi	BMC Swabi, Qabla Banda Dudher	1	0	0	0	1	r	1	0
54	18-Apr-12	Measles	Swat	Village Nokhera, UC Sakhra, Tehsil Matta	0	1	0	0	1	r	1	0
55	18-Apr-12	Measles	Swat	Village Lakhkar, UC Shin, Tehsil Khwazakhela	1	0	0	0	1	r	1	0
56	19-Apr-12	Measles	Swat	Village Nazarabad, UC Pir Kaley, Tehsil Matta	1	0	0	0	1	r	1	0
57	19-Apr-12	Measles	Swat	Village Korey, UC Barthana, Tehsil Matta	0	0	1	0	1	r	1	0
58	19-Apr-12	Measles	Swat	Village Gashkore, UC Bandal, Tehsil Khwazakhela	0	1	0	0	1	r	1	0

59	18-Apr-12	Measles	Buner	Bajkata goonga hujra tehsil gagra	0	1	0	0	1	r	1	0
60	18-Apr-12	Measles	Buner	naray tangay near amnawar tehsil gagra	0	0	1	0	1	r	1	0
61	18-Apr-12	Measles	Buner	hisar near bagra tehsil dagar	1	0	0	0	1	r	1	0
62	18-Apr-12	Measles	Buner	hisar near bagra tehsil dagar	0	1	0	0	1	r	1	0
63	18-Apr-12	Measles	Buner	kohi bampokha tehsil dagar	0	0	1	0	1	r	1	0
64	18-Apr-12	Measles	Buner	bazargay tehsil dagar	0	0	1	0	1	r	1	0
65	20-Apr-12	Measles	Buner	kaho sar nagrai UC amazai	1	0	0	0	1	r	1	0
66	20-Apr-12	Measles	Buner	charnee near kalpani tehsil gagra	2	0	4	0	2	r	6	0
67	21-Apr-12	Measles	Buner	hujra jafar khel chinglai tehsil thothalai	1	0	0	0	1	r	1	0
68	16-Apr-12	Scabies	Tank	BaraKhel	4	13	5	5	0	r	27	0

Federal Administered Tribal Areas (FATA):

Figure-11: Two years trend of Other Acute Diarrhoea in FATA



DEWS was started in FATA three agencies (Bajaur, Khyber, Mohmand) since February, 2011 during FATA IDPs crisis. Figure 11 shows 2 years weekly percentage trend of OAD percentage trend. In week 16 OAD 1,193 cases or 9% were shared showing 2% increase as compared to previous week.

Figure-12: Distribution of consultations by communicable diseases

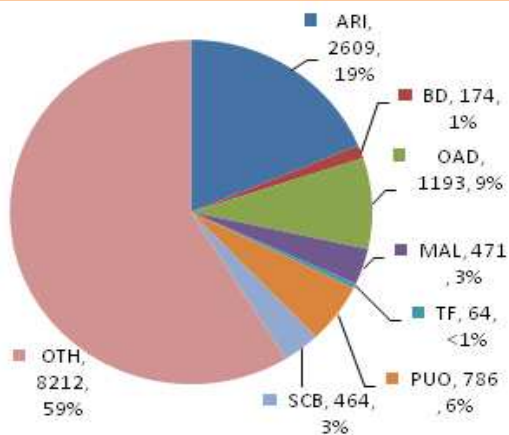
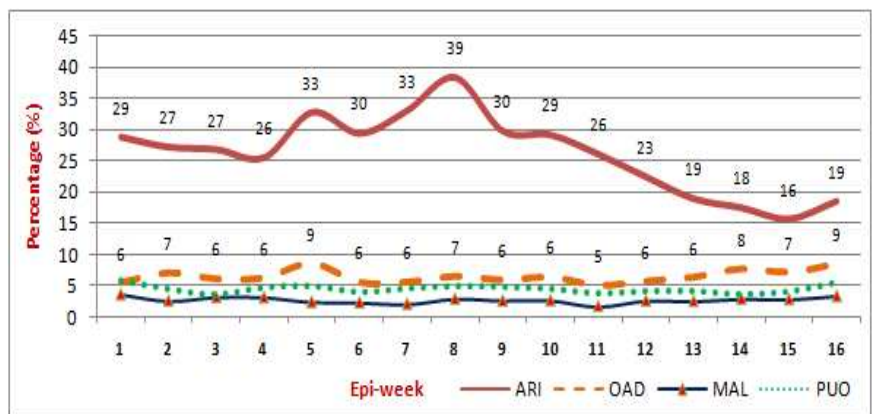
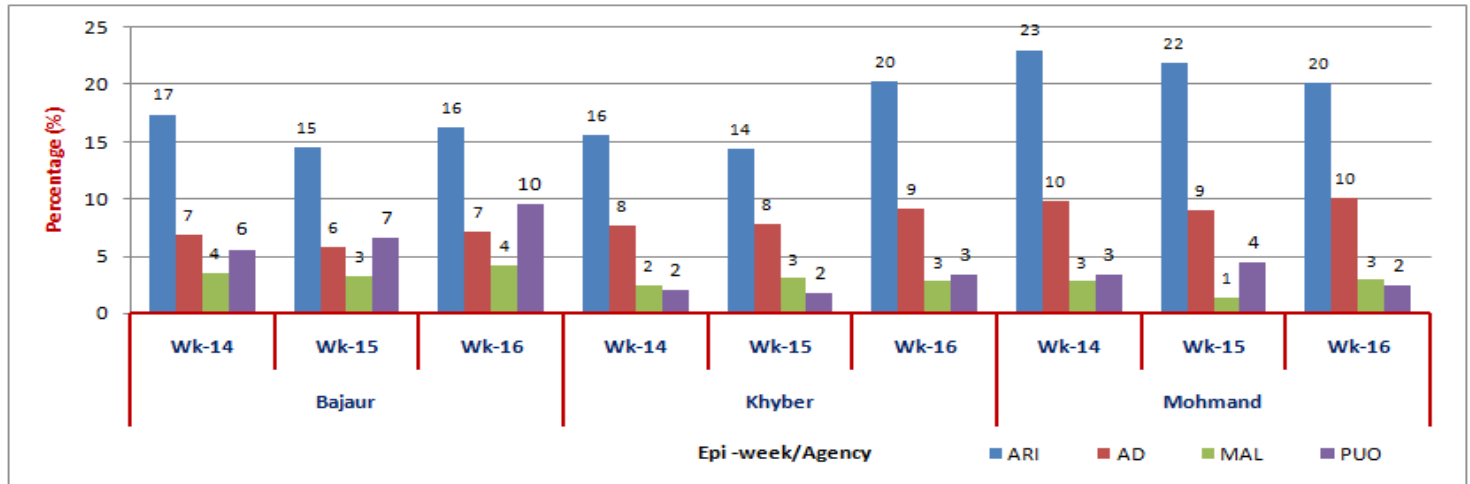


Figure-13: Weekly diseases (ARI, OAD, MAL and PUO) percentage trend



- Figure 12 shows distribution of consultations by communicable diseases in week 16, 2012 and figure 13 shows weekly percentage trend of ARI, OAD, MAL and PUO from week 1 to 16, 2012.
- This week, 50 health facilities reported from 3 agencies to eDEWS with a total of 13,973 patients' consultations.
- Acute Respiratory Tract Infection (ARI) 2,609 cases reported were showing 3% increase in percentage as compared to week 15 patients' visits and accounted for 19% of the total consultations.
- Other Acute Diarrhea (OAD) 1,193 cases or 9% were showing 2% increase in percentage as compared to week 15 and suspected Malaria (Mal) 471 cases or 3% were shared.
- While Pyrexia of Unknown Origin (PUO) shared 786 cases or 6% which shows 2% increase in percentage as compared to previous week, Typhoid Fever (TF) 64 cases or <1% and Scabies 464 cases or 3% were reported.

Figure-14: ARI,OAD, MAL and PUO percentage situation of Federal Administered Treaty Agency (FATA) in last four weeks



The above figure 14 shows ARI, OAD, MAL and PUO percentage situation in FATA three agencies. During week 16, 2012 high percentage of ARI consultations were reported as compared to other diseases. In this week high percentage of ARI consultations were reported from and Khyber and Mohmand agency. In this week ARI 20% or 1,173 cases, 20% or 539 cases and 16% or 897 cases were shared respectively from Khyber, Mohmand and Bajaur agencies. Similarly Other Acute Diarrhoea 10% or 271 cases, 9% or 531 cases and 7% or 391 cases respectively from Mohmand, Khyber and Bajaur agencies. Pyrexia Unknown Origin (PUO) cases high percentage were reported 10% or 525 cases, 3% or 195 cases respectively from Bajaur and Khyber agencies were reported. Suspected Malaria was remained 4% (232 cases) in Bajaur, 3% or 161 cases in Khyber and 3% or 78 cases in Mohmand agencies.

Current week's Alert/Outbreak in FATA:

- A total of 11 alerts (6 alerts for measles including 1 outbreak, 3 for NNT while 1 each for Tetanus and Leishmaniasis) were reported and responded in this week.

S. No.	Date Investigated	Suspected Disease	Agency	Location	<5 M	>5 M	<5 F	>5 F	Sample	Positive	Cases	Death
1	17-Apr-12	NNT	Bajaur Agency	village Malasaid of Tehsil Salarzai	1	0	0	0	1	r	1	0
2	17-Apr-12	NNT	Bajaur Agency	village Mandal, Tehsil Salarzai	1	0	0	0	1	r	1	0
3	17-Apr-12	Measles	Bajaur Agency	village wara kharkay, Tehsil Mamoond	1	0	0	0	1	r	1	0
4	18-Apr-12	Measles	Bajaur Agency	village Delay-Loesam, Tehsil Khar	1	0	0	0	1	r	1	0
5	19-Apr-12	Measles	Bajaur Agency	village Moosa kor, Tehsil Ambar	1	0	0	0	1	r	1	0
6	19-Apr-12	Measles	Bajaur Agency	village shakro, Tehsil Mamoond	1	0	0	0	1	r	1	0
7	20-Apr-12	NNT	Bajaur Agency	village jannat sha, Tehsil Khar	1	0	0	0	1	r	1	0
8	20-Apr-12	Tetanus	Bajaur Agency	village Kasai, Tehsil Salarzai	0	0	0	1	1	r	1	0
9	20-Apr-12	Measles	FR Bannu	Village Baka Khel	0	0	1	0	1	r	1	0
10	19-Apr-12	Measles	Khyber Agency	Mashoom baba Tatara, UC Kambila, Tehsil Mulagori	7	0	6	0	2	r	13	2
11	20-Apr-12	Leishmaniasis	Khyber Agency	Village Tanidar, Murad Dand, UC Mian Morcha, Tehsil Mulagori	1	0	0	0	0	r	1	0

Figure-15: Total number of alerts/outbreak situation in Khyber Pakhtunkhwa & FATA through eDEWS System (Week 16, 2012)

