

## Disease situation in Jalozai IDP's camp, Khyber Pakhtunkhwa Week 44 (October 28<sup>th</sup> to November 3<sup>rd</sup>, 2012)

### Highlights:

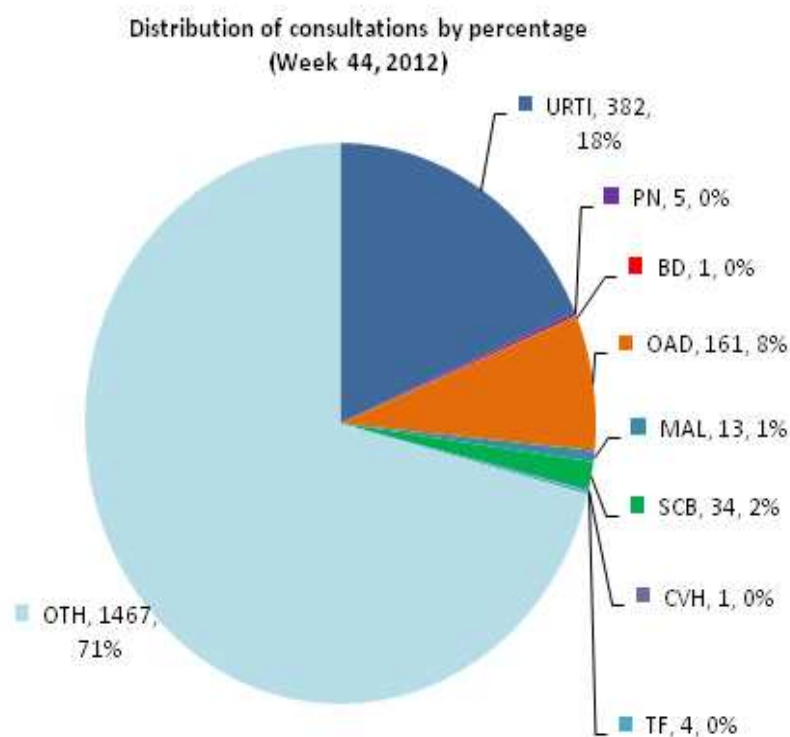
- ❖ **Acute Respiratory tract infections (ARI)** accounted for **19% or 387 cases** of the total patients (2,068 consultations) in all age groups and is showing 5% decrease in percentage of ARI patient visits as compared to week 43, 2012.
- ❖ **Other Acute Diarrhea (OAD)** accounted for **8% or 161 cases** of the total patient consultations in all age groups by showing 0.3% increase in percentage as compared to OAD patient visits in previous week.
- ❖ Confirmed **Malaria (MAL)** shared **0.6% or 13 cases** of all patient visits in current week.
- ❖ **Skin Infections (SCB)** reported as **1.6% or 34 cases** of the total patient consultations.
- ❖ No alert was reported in this week.



### Weekly disease consultations in Jalozai IDPs camp:-

Figure 1: Distribution of consultations by percentage

Table 1: Cases reported from Jalozai IDPs camp



Disease name	Week-44	
	Cases	%
Upper Respiratory Tract Infection (URTI)	382	18.5
Pneumonia (PN)	5	0.2
Bloody Diarrhea (BD)	1	<1
Other Acute Diarrhea (OAD)	161	8
Acute Watery Diarrhea (AWD)	-	-
Confirmed Malaria (MAL)	13	0.6
Scabies (SCB)	34	1.6
Chronic Viral Hepatitis (CVH)	1	<1
Suspected Measles (Meas)	-	-
Pyrexia Unknown Origin (PUO)	-	-
Cutaneous Leishmaniasis (CL)	-	-
Suspected Typhoid Fever (TF)	4	0.2
Other diseases (OTH)	1,467	71
<b>Total consultations</b>	<b>2,068</b>	

A total **2,068** consultations have been reported through DEWS during week 44 (October 28 to November 3, 2012) (table 1). **Seven (7) health static units** (Merlin International 4, CAMP Organization 2 and FATA health facility 1) from Jalozai IDPs camp shared daily/weekly disease surveillance data through DEWS.

## Major causes for seeking health care percentage trend in Jalozai IDPs camp:-

Figure 2: Weekly disease percentage trend in Jalozai IDPs camp (Week 14 to 44, 2012):

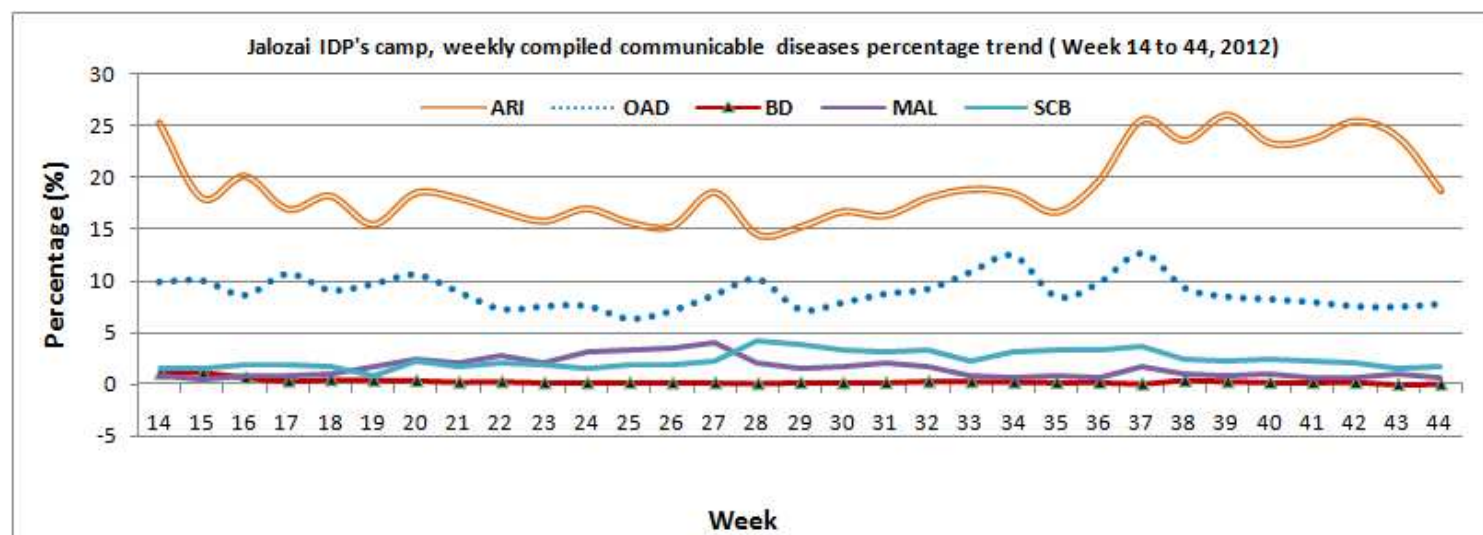


Figure 2 shows percentage trend of major communicable diseases in Jalozai IDPs camp. In this week ARI shared 19% or 387 cases is showing 5% decrease and OAD shared 8% or 161 cases is showing 0.3% increase in percentage.

## Total consultations reported from all health units in Jalozai IDPs camp:-

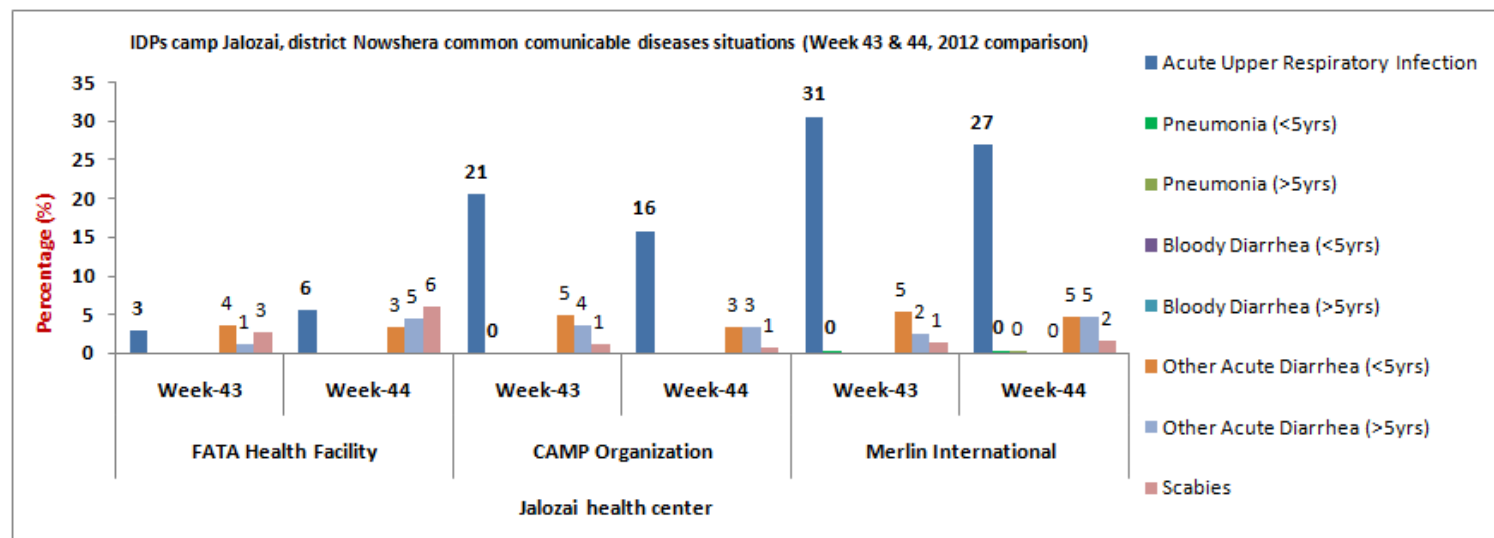
Communicable diseases <sup>4</sup>	CAMP (2 units)				Merlin (4 units)				FATA Health facility (1 unit)			
	Wk-43 (Cases)	%	Wk-44 (Cases)	%	Wk-43	%	Wk-44	%	Wk-43 (Cases)	%	Wk-44 (Cases)	%
Acute Upper Respiratory Infection	215	20.6	167	16	540	30.6	200	27	13	3	15	5.6
Pneumonia (<5yrs)	1	0.1	-	-	7	0.4	3	0.4	-	-	-	-
Pneumonia (>5yrs)	-	-	-	-	-	-	2	0.3	-	-	-	-
Bloody Diarrhea (<5yrs)	-	-	-	-	-	-	-	-	-	-	-	-
Bloody Diarrhea (>5yrs)	-	-	-	-	-	-	1	0.1	-	-	-	-
Other Acute Diarrhea (<5yrs)	51	5	36	3.4	93	5.3	35	4.7	16	3.6	9	3.4
Other Acute Diarrhea (>5yrs)	37	3.5	35	3.3	42	2.4	34	4.6	5	1.1	12	4.5
Acute Watery Diarrhea (>5yrs)	-	-	-	-	-	-	-	-	-	-	-	-
Confirmed Malaria	11	1.1	7	0.7	20	1.1	6	0.8	-	-	-	-
Cutaneous Leishmaniasis (CL)	-	-	-	-	3	0.2	-	-	-	-	-	-
Pyrexia Unknown Origin (PUO)	-	-	-	-	-	-	-	-	-	-	-	-
Scabies (SCB)	13	1.2	6	0.6	25	1.4	12	1.6	12	2.7	16	6
Suspected Typhoid Fever (TF)	2	0.2	4	0.4	1	0.1	-	-	-	-	-	-
Chronic Viral Hepatitis (CVH)	-	-	-	-	-	-	1	0.1	-	-	-	-
Other diseases	714	68.4	804	76	1,032	58.5	448	60.4	398	89.6	215	80.5
<b>Total Consultations</b>	<b>1,044</b>		<b>1,059</b>		<b>1,763</b>		<b>742</b>		<b>444</b>		<b>267</b>	

A comparison of the ARI consultations by health units in Jalozai camp on week 44 (October 28 to November 3) shows that high proportion of ARI cases are reported accounted for 19% (URTI 18.5% and Pneumonia 0.2%), or

387 cases followed by Other Acute Diarrhea 8% or 161 cases. Confirmed Malaria comprised 0.7% or 13 cases in consolidated data out of total consultations.

### Disease trends by percentage in IDPs Jalozai camp:-

**Figure 3: Most common communicable diseases situation in Jalozai IDPs camp as percentage of consultations (Week 43 and 44 comparison)**



The above figure 3 shows major health causes percentage situation in Jalozai IDPs camp. During week 44 high percentages of ARI consultations were reported from Merlin health units as compared to CAMP health units and FATA health facility. Similarly high percentage of OAD consultations were reported from Merlin health centers as compared to CAMP health units and FATA health unit. In this week OAD 9.3% and ARI 27.6% were shared from Merlin health facilities, OAD 6.7% and ARI 16% were from CAMP health units, also OAD 8% and ARI 5.6% were from FATA health center. No alert was reported in this week.

### Distribution of consultations percentage by age and gender

**Figure 4: Age and gender wise segregated disease situation in Jalozai IDPs camp, week 44**

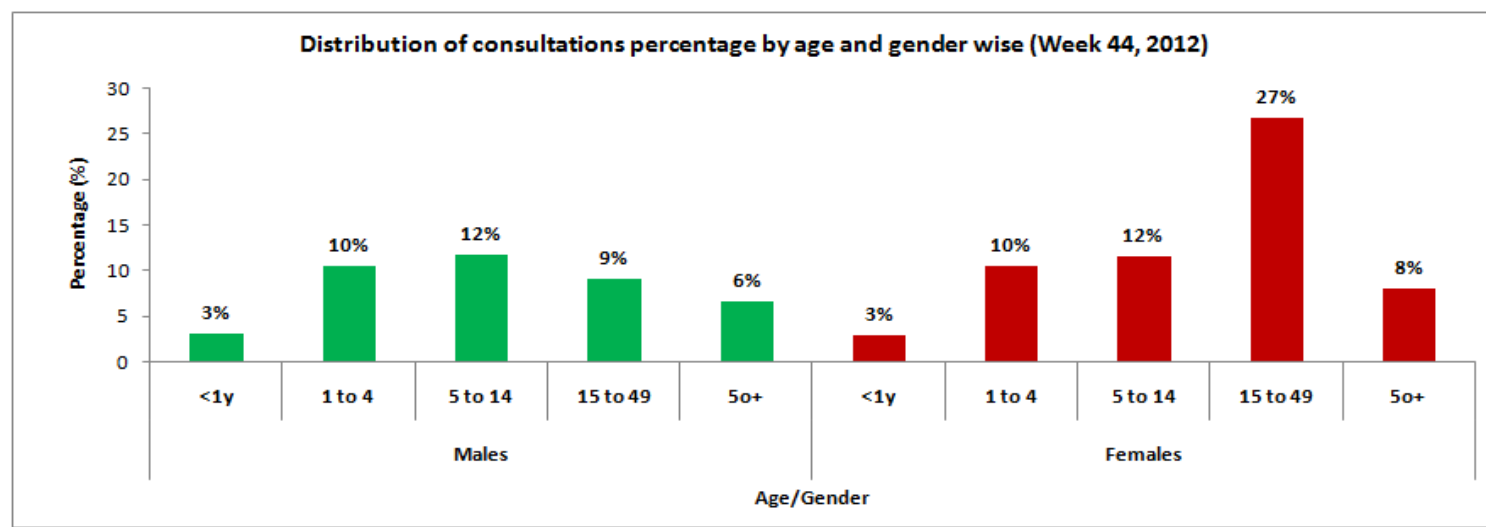


Figure 4 shows comparison of the consultations by gender and age wise in health events in over all diseases, male to female patients' ratio reported was **40% or 837** cases and **60% or 1,231** cases respectively.

## Immunization in Jalozai IDPs camp:-

Table 3 (a & b): Immunization (Jalozai IDP's Camp, Nowshera) from 28<sup>th</sup> October to 3<sup>rd</sup> November, 2012

### a) Routine vaccination of Jalozai IDPs camp (Week 44):

EPI	Routine Vaccination										OPV U5 yrs (Other than Routine)*	Women	TT1	TT2	TT3	TT4	TT5	Total
	Children	BCG	Polio			PENTA			Measles	Fully Immunized								
<1 year	Birth		1	2	3	1	2	3										
<1 year	0	1	1	2	1	1	5	2	0	0	0	Pregnant	3	0	0	0	0	32
>=1 year	0	0	1	2	1	1	1	6	0	0	0	Non-Pregnant (15-49y)	3	1	0	0	0	
<b>Total</b>	<b>0</b>	<b>1</b>	<b>2</b>	<b>4</b>	<b>2</b>	<b>2</b>	<b>6</b>	<b>8</b>	<b>0</b>	<b>0</b>	<b>0</b>	<b>-</b>	<b>6</b>	<b>1</b>	<b>0</b>	<b>0</b>	<b>0</b>	<b>32</b>

### b) Routine vaccination of Jalozai IDPs camp (Consolidated data of all vaccination points in Jalozai IDP camp):

EPI	Routine Vaccination										OPV U5 yrs (Other than Routine)*	Women	TT1	TT2	TT3	TT4	TT5	Total
	Children	BCG	Polio			PENTA			Measles	Fully Immunized								
<1 year	Birth		1	2	3	1	2	3										
<1 year	2,065	1,383	2,497	1,862	1,748	2,536	1,887	1,752	2,092	1,372	3,305	Pregnant	2,567	1,436	231	54	6	115,841
>=1 year	1,402	0	1,510	793	756	1,512	794	762	3,153	668	67,686	Non-Pregnant (15-49y)	7,335	1,068	1,014	500	95	
<b>Total</b>	<b>3,467</b>	<b>1,383</b>	<b>4,007</b>	<b>2,655</b>	<b>2,504</b>	<b>4,048</b>	<b>2,681</b>	<b>2,514</b>	<b>5,245</b>	<b>2,040</b>	<b>70,991</b>	<b>-</b>	<b>9,902</b>	<b>2,504</b>	<b>1,245</b>	<b>554</b>	<b>101</b>	<b>115,841</b>

\*OPV dosage received during OPD and not the ones in the routine

## Laboratory test conducted in Jalozai IDPs camp:-

Table 4 (a & b): Laboratory test situation in IDPs Jalozai Camp, Nowshera

### a) laboratory test situation data in Jalozai IDPs camp (October 28 to November 3, 2012):

Test Name	MP (microscopy)	MP (RDT)*	HB%	HBS	HCV	B.GROUP	Typhoid	B.SUGAR	ESR	LEISHMANIASIS	PREGNENCIES	URINE ALBUMIN	URINE SUGAR	URINE R/E	STOOL R/E	BILIRUBIN	Syphilis	SPUTUM FOR AFB	TOTAL
<b>+Ve</b>	7	13	0	0	0	-	0	1	-	0	1	0	0	5	0	0	0	0	-
<b>-Ve</b>	15	29	2	2	2	-	0	1	-	0	1	0	0	1	4	0	0	0	-
<b>Total</b>	<b>22</b>	<b>42</b>	<b>2</b>	<b>2</b>	<b>2</b>	<b>0</b>	<b>0</b>	<b>2</b>	<b>0</b>	<b>0</b>	<b>2</b>	<b>0</b>	<b>0</b>	<b>6</b>	<b>4</b>	<b>0</b>	<b>0</b>	<b>0</b>	<b>84</b>

This weekly diseases situation report is published jointly by the World Health Organization, Ministry of Health, Government of Khyber Pakhtunkhwa, FATA and Health partners.

For Correspondence; Peshawar WHO-EHA Office: Tel: +92-091-5701831, E-mail: kpk.fata.dews@gmail.com.

\* Malaria slides /RDT examined report

Health Centers	Slides/RDT examined	P. Falciparum	P. Vivax	Mixed	Total +ve	Falciparum + Mixed	Slide Positivity Rate (SPR)	Falciparum Rate
Merlin	20	0	6	0	6	0	30	0
CAMP	22	0	7	0	7	0	31.8	0
<b>Total</b>	<b>42</b>	<b>0</b>	<b>13</b>	<b>0</b>	<b>13</b>	<b>0</b>	<b>31.0</b>	<b>0</b>

A total of 42 slides were examined for Malaria in this week. Out of total slides examined 13 (31%) were positive; out of which P. Falciparum 0 (0%), P. Vivax 13 (31%) and Mixed 0 (0%) were shared.

b) laboratory test situation data in Jalozai IDPs camp (Consolidated):

Test Name	MP (microscopy)	MP (RDT)*	HB% ++	HBS	HCV	B.GROUP	Typhoid	B.SUGAR	ESR	LEISHMANIASIS	PREGNENCIES	URINE ALBUMIN	URINE SUGAR	URINE R/E	STOOL R/E	BILIRUBIN	Syphilis	SPUTUM FOR AFB	TOTAL
<b>+Ve</b>	501	679	445	55	51	-	11	163	-	8	743	143	20	452	84	24	8	0	-
<b>-Ve</b>	946	1,337	1,502	1,640	1,594	-	79	1,403	-	63	605	1,338	1,468	1,195	118	1,237	1,469	2	-
<b>Total</b>	<b>1,447</b>	<b>2,016</b>	<b>1,947</b>	<b>1,695</b>	<b>1,645</b>	<b>1,536</b>	<b>90</b>	<b>1,566</b>	<b>21</b>	<b>71</b>	<b>1,348</b>	<b>1,481</b>	<b>1,488</b>	<b>1,647</b>	<b>202</b>	<b>1,261</b>	<b>1,477</b>	<b>2</b>	<b>20,940</b>

Nutrition situation in Jalozai IDPs camp:-

Table 5: Nutrition situation in IDPs Jalozai camp Nowshera

- Nutrition situation data (Week 44):
  - Data not received
- Nutrition situation data (Consolidated):

CMAM Finding	No of Children screened (6-59 months)		MAM MUAC < 12.5-11.5 cm		SAM MUAC < 11.5cm		Malnutrition at Risk Borderline MUAC ≤13.5-12.5 cm		No Of PLW Screened		Malnourish PLW	
	M	F	M	F	M	F	M	F	P	L	P. MUAC<21	L. MUAC<21
Number of screened	5,199	5,325	448	643	125	157	623	783	2,164	3,467	305	249
<b>Total</b>	<b>10,524</b>		<b>1,091</b>		<b>282</b>		<b>1,406</b>		<b>5,631</b>		<b>554</b>	

Health Education situation in Jalozai IDPs camp:-

Table 6: Health education situation in IDP's Jalozai camp Nowshera

➤ Data of health education situation (Week 44, 2012)					➤ Data of health education situation (Consolidated)				
Sessions	Number of Sessions	Total participants			Sessions	Number of Sessions	Total participants		
		Males	Females	Total			Males	Females	Total
Total Sessions	62	24	583	607	Total Sessions	15,762	46,081	78,871	124,952

MCH in Jalozai IDPs camp:-

Figure 5: MCH situation in IDP's Jalozai camp Nowshera (October 28 to November 3, 2012)

- Data not received