

Disease situation in Jalozai IDP's camp, Khyber Pakhtunkhwa Week 25 (June 17th to 23rd, 2012)

Highlights:

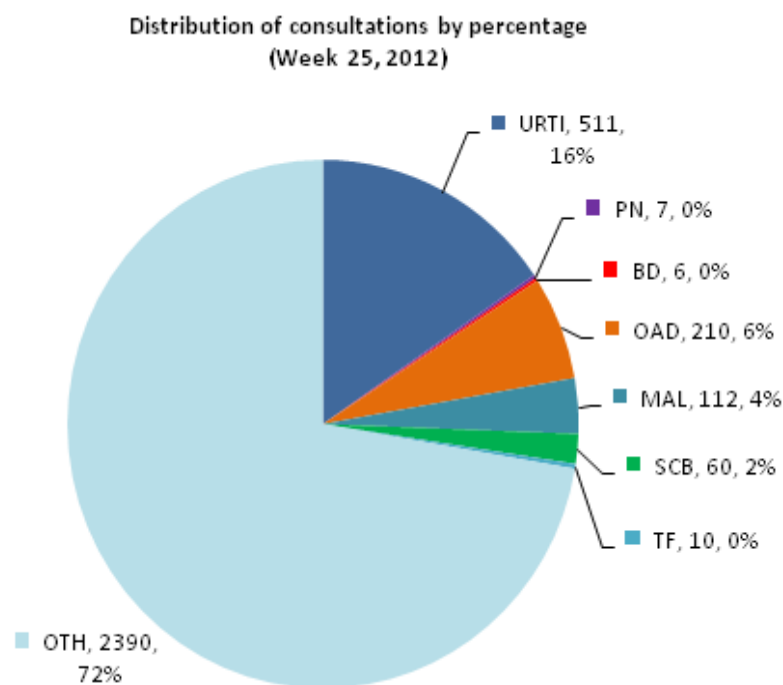
- ❖ **Acute Respiratory tract infections (ARI)** accounted for **16% or 518 cases** of the total patients (3,306 consultations) in all age groups and is showing 1% decrease in percentage of ARI patient visits as compared to week 24, 2012.
- ❖ **Other Acute Diarrhea (OAD)** accounted for **6.4% or 210 cases** of the total patient consultations in all age groups by showing 1.2% decrease in percentage as compared to OAD patient visits in previous week.
- ❖ **Bloody Diarrhea (BD)** shared **0.2% or 6 cases** and also suspected **Malaria (MAL)** shared **3.4% or 112 cases** of all patient visits in current week.
- ❖ **Skin Infections (SCB)** reported as **2% or 60 cases** of the total patient consultations.
- ❖ No alert was reported in this week.



Weekly disease consultations in Jalozai IDPs camp:-

Figure 1: Distribution of consultations by percentage

Table 1: Cases reported from Jalozai IDPs camp



Disease name	Week-25	
	Cases	%
Upper Respiratory Tract Infection (URTI)	511	15.5
Pneumonia (PN)	7	0.2
Bloody Diarrhea (BD)	6	0.2
Other Acute Diarrhea (OAD)	210	6.4
Acute Watery Diarrhea (AWD)	-	-
Suspected Malaria (MAL)	112	3.4
Scabies (SCB)	60	2
Chronic Viral Hepatitis (CVH)	-	-
Suspected Measles (Meas)	-	-
Acute Flaccid Paralysis	-	-
Cutaneous Leishmaniasis (CL)	-	-
Suspected Typhoid Fever (TF)	10	0.3
Other diseases (OTH)	2,390	72
Total consultations	3,306	

A total **3,306** consultations have been reported through DEWS during week 25 (June 17th to 23rd, 2012 (table 1). **Six (6) health static units** (Merlin International 4 and CAMP Organization 2) from Jalozai IDPs camp shared daily/weekly disease surveillance data through DEWS.

Major causes for seeking health care percentage trend in Jalojai IDPs camp:-

Figure 2: Weekly disease percentage trend in Jalojai IDPs camp (Week 13 to 25, 2012):

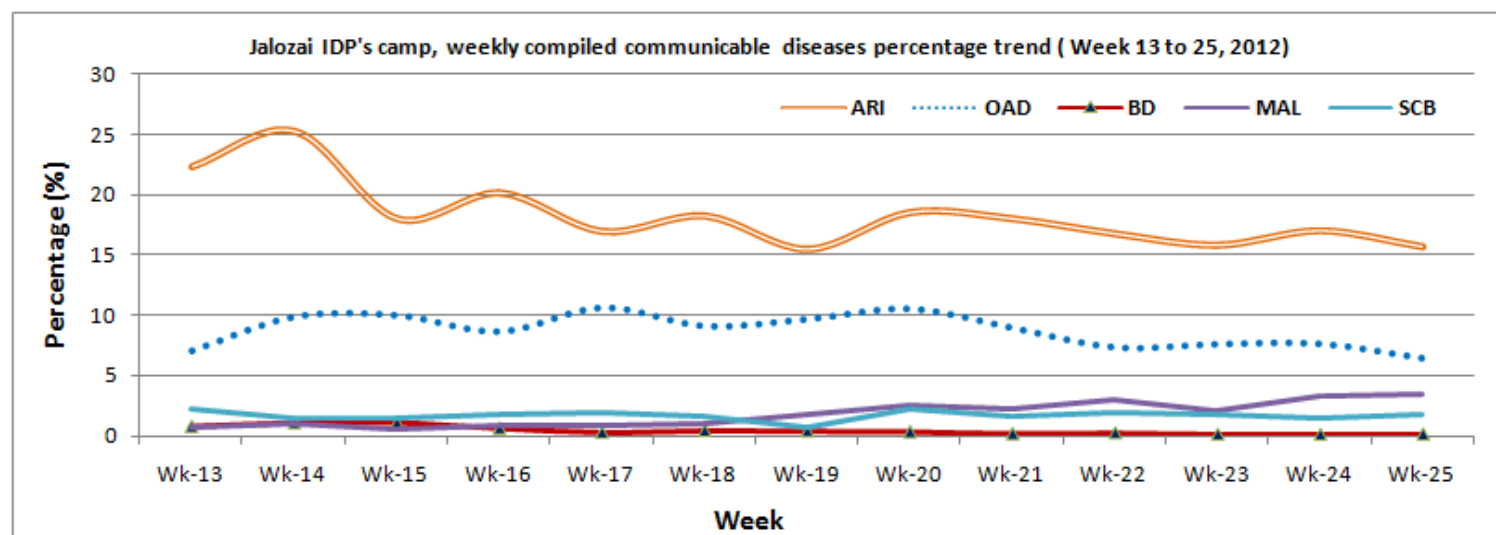


Figure 2 shows percentage trend of major communicable diseases in Jalojai IDPs camp. In this week ARI shared 16% or 518 cases is showing 1% decrease and OAD shared 6.4% or 210 cases is showing 1.2% decrease in percentage.

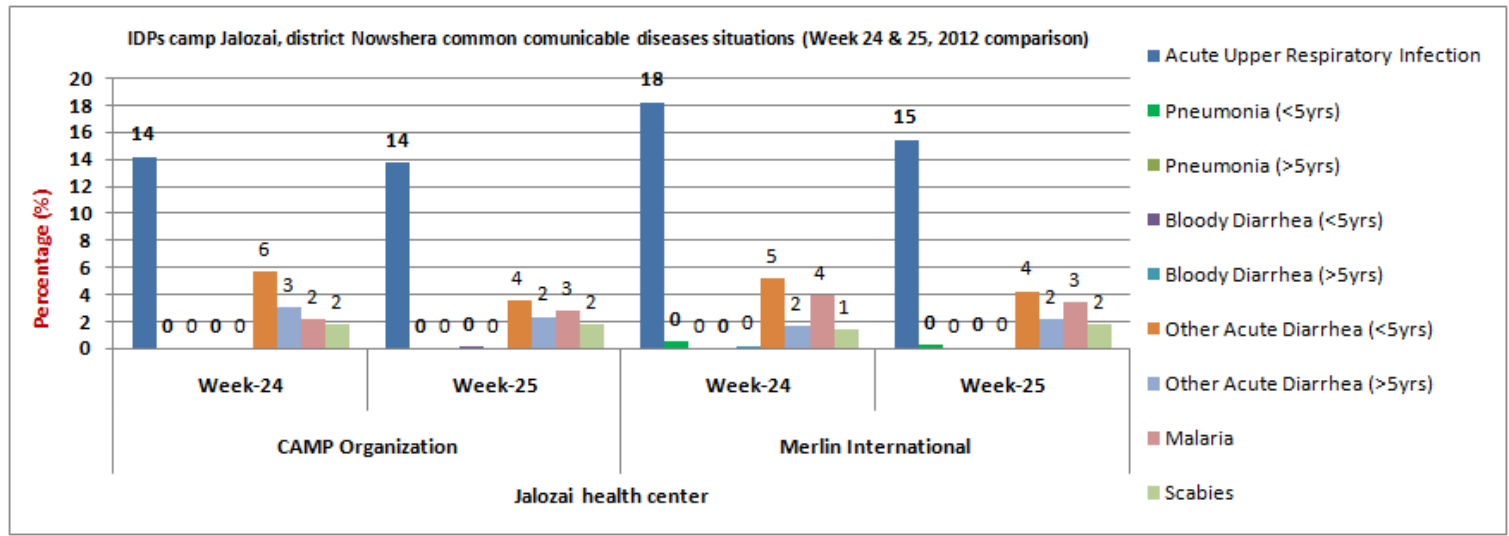
Total consultations reported from all health units in Jalojai IDPs camp:-

Communicable diseases	CAMP (2 units)				Merlin (4 units)			
	Wk-24 (Cases)	%	Wk-25 (Cases)	%	Wk-24 (Cases)	%	Wk-25 (Cases)	%
Acute Upper Respiratory Infection	174	14.2	165	14	356	18.3	346	16.4
Pneumonia (<5yrs)	-	-	-	-	9	0.5	7	0.3
Pneumonia (>5yrs)	-	-	-	-	-	-	-	-
Bloody Diarrhea (<5yrs)	-	-	2	0.2	-	-	1	<1
Bloody Diarrhea (>5yrs)	-	-	-	-	5	0.3	3	0.1
Other Acute Diarrhea (<5yrs)	70	5.7	43	3.6	101	5.2	97	4.6
Other Acute Diarrhea (>5yrs)	37	3	28	2.3	33	1.7	42	2
Acute Watery Diarrhea (>5yrs)	-	-	-	-	-	-	-	-
Suspected Malaria	26	2.1	33	3	77	4	79	3.7
Suspected Measles (Meas)	-	-	-	-	1	0.1	-	-
Acute Flaccid Paralysis (AFP)	-	-	-	-	-	-	-	-
Scabies (SCB)	21	2	21	2	26	1.3	39	2
Suspected Typhoid Fever (TF)	9	0.7	10	1	-	-	-	-
Cutaneous Leishmaniasis (CL)	-	-	-	-	-	-	-	-
Other diseases	886	72.4	895	75	1,340	68.8	1,495	71
Total Consultations	1,223		1,197		1,948		2,109	

A comparison of the ARI consultations by health units in Jalojai camp on week 25 (June 17 to 23) shows that high proportion of ARI cases are reported accounted for 16% (URTI 15.5% and Pneumonia 0.2%), or 518 cases followed by Other Acute Diarrhea 6.4% or 210 cases. Bloody diarrhea comprised 0.2% or 6 cases in consolidated data out of total consultations.

Disease trends by percentage in IDPs Jalozai camp:-

Figure 3: Most common communicable diseases situation in Jalozai IDPs camp as percentage of consultations (Week 24 and 25 comparison)



The above figure 3 shows major health causes percentage situation in Jalozai IDPs camp. During week 25 high percentages of OAD and ARI consultations were reported from Merlin health centers as compared to CAMP health units. In this week OAD 6.6% and ARI 16.7% were shared from Merlin static units and also OAD 6% and ARI 14% from CAMP health centers. No alert was reported in this week.

Distribution of consultations percentage by age and gender

Figure 4: Age and gender wise segregated disease situation in Jalozai IDPs camp, week 25 (June 17th to 23rd, 2012)

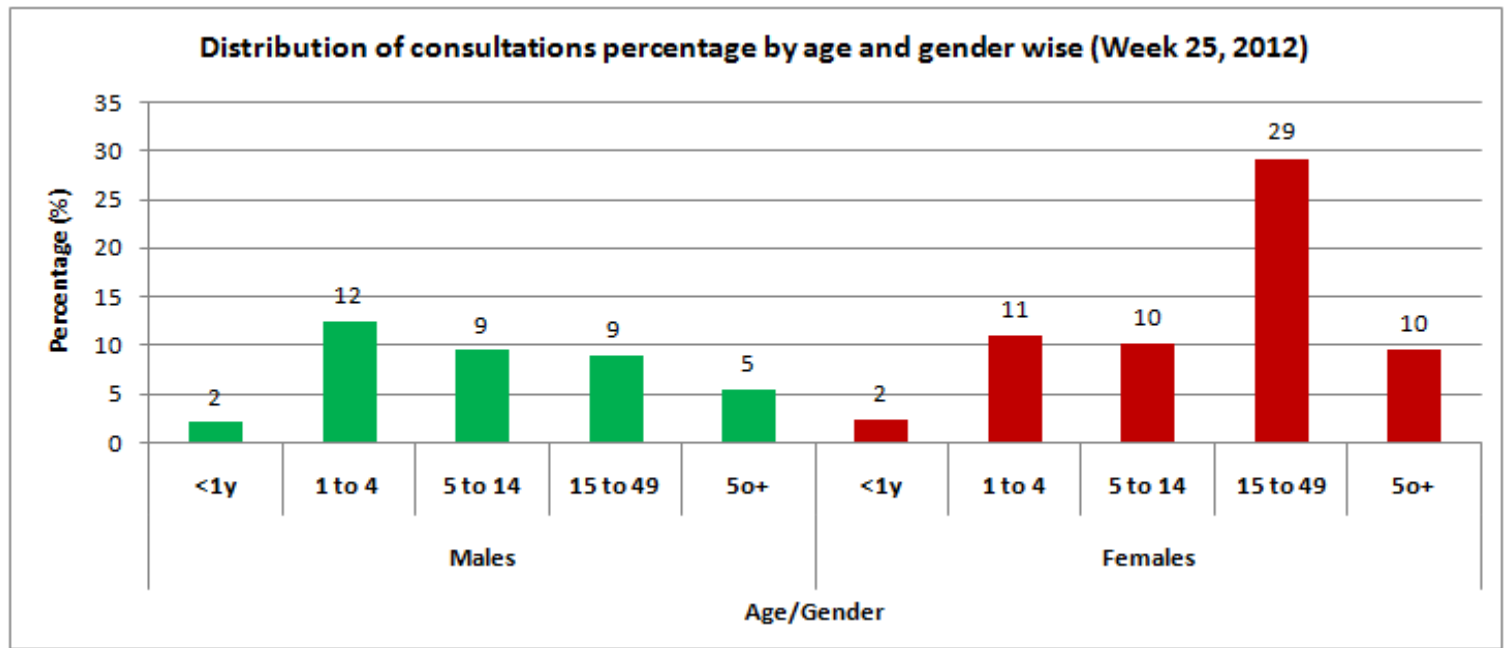


Figure 4 shows comparison of the consultations by gender and age wise in health events in over all diseases, male to female patients' ratio reported was **38% or 1,254 cases** and **62% or 2,052 cases** respectively.

Immunization in Jalozai IDPs camp:-

Table 3 (a & b): Immunization (Jalozai IDP's Camp, Nowshera) in week 25 (June 17th to 23rd, 2012)

a) Routine vaccination of Jalozai IDPs camp (Week 25):

EPI	Routine Vaccination										OPV U5 yrs	Women	TT1	TT2	TT3	TT4	TT5	Total
	Children	BCG	Polio			PENTA			Measles	Fully Immunized								
			Birth	1	2	3	1	2										
<1 year	52	39	67	43	56	67	43	56	69	33	41	Pregnant	89	47	9	4	0	2,542
>=1 year	52	0	63	29	35	63	29	35	65	32	1,161	Non-Pregnant (15-49y)	173	51	44	28	6	
Total	104	39	116	65	73	130	72	91	134	65	1,202	-	262	98	53	32	6	

b) Routine vaccination of Jalozai IDPs camp (Consolidated data of all vaccination points in Jalozai IDP camp):

EPI	Routine Vaccination										OPV U5 yrs	Women	TT1	TT2	TT3	TT4	TT5	Total
	Children	BCG	Polio			PENTA			Measles	Fully Immunized								
			Birth	1	2	3	1	2										
<1 year	1,108	706	1,278	876	761	1,317	892	766	1,088	610	2,485	Pregnant	1,446	680	77	22	4	71,302
>=1 year	1,133	0	1,092	491	430	1,092	491	431	2,274	371	43,737	Non-Pregnant (15-49y)	4,396	556	670	349	62	
Total	2,241	706	2,221	1,227	1,091	2,409	1,383	1,197	3,362	981	46,222	-	5,842	1,236	747	371	66	

Laboratory test conducted in Jalozai IDPs camp:-

Table 4 (a & b): Laboratory test situation in IDPs Jalozai Camp, Nowshera (Week 25, 2012)

a) laboratory test situation data in Jalozai IDPs camp (June 17 o 23, 2012):

Test Name	MP (microscopy)	MP (RDT)*	HB%	HBS	HCV	B.GROUP	B.SUGAR	ESR	LEISHMANIASIS	PREGNENCIES	URINE ALBUMIN	URINE SUGAR	URINE R/E	STOOL R/E	BILIRUBIN	Syphilis	SPUTUM FOR AFB	TOTAL
+Ve	32	45	32	4	1	-	4	-	0	49	5	0	13	4	0	1	0	-
-Ve	36	59	78	35	53	-	84	-	1	16	18	22	17	2	0	80	0	-
Total	68	104	110	39	54	79	88	0	1	65	23	22	30	6	0	81	0	770

b) laboratory test situation data in Jalojai IDPs camp (Consolidated):

Test Name	MP (microscopy)	MP (RDT)*	HB% ++	HBS	HCV	B.GROUP	B.SUGAR	ESR	LEISHMANIASIS	PREGNENCIES	URINE ALBUMIN	URINE SUGAR	URINE R/E	STOOL R/E	BILIRUBIN	Syphilis	SPUTUM FOR AFB	TOTAL
+Ve	132	297	238	23	27	-	63	-	0	354	78	14	221	44	1	4	0	-
-Ve	343	421	623	660	585	-	445	-	26	223	768	835	712	62	690	602	0	-
Total	475	718	861	683	612	638	508	13	26	577	846	849	933	106	691	606	0	9,142

Nutrition situation in Jalojai IDPs camp:-

Table 5: Nutrition situation in IDPs Jalojai camp Nowshera

➤ Nutrition situation data (Week 25):

CMAM Finding	No of Children screened (6-59 months)		MAM MUAC < 12.5-11.5 cm		SAM MUAC < 11.5cm		Malnutrition at Risk Borderline MUAC ≤13.5-12.5 cm		No Of PLW Screened		Malnourish PLW	
	M	F	M	F	M	F	M	F	P	L	P. MUAC<21	L. MUAC<21
Number of screened	160	166	5	14	1	3	7	13	43	47	3	2
Total	326		19		4		20		90		5	

➤ Nutrition situation data (Consolidated):

CMAM Finding	No of Children screened (6-59 months)		MAM MUAC < 12.5-11.5 cm		SAM MUAC < 11.5cm		Malnutrition at Risk Borderline MUAC ≤13.5-12.5 cm		No Of PLW Screened		Malnourish PLW	
	M	F	M	F	M	F	M	F	P	L	P. MUAC<21	L. MUAC<21
Number of screened	3,115	3,130	285	369	72	102	340	406	1,148	2,699	175	202
Total	6,245		654		174		746		3,847		377	

Health Education situation in Jalojai IDPs camp:-

Table 6: Health education situation in IDP's Jalojai camp Nowshera

➤ Data of health education situation (Week 25, 2012)					➤ Data of health education situation (Consolidated)				
Sessions	Number of Sessions	Total participants			Sessions	Number of Sessions	Total participants		
		Males	Females	Total			Males	Females	Total
Total Sessions	618	1,871	2,731	4,602	Total Sessions	4,489	11,687	28,956	41,242

MCH in Jalozai IDPs camp:-

Figure 5: MCH situation in IDP's Jalozai camp Nowshera (June 17th to 23rd, 2012)

