

Disease situation in Jalozai IDP's camp, Khyber Pakhtunkhwa Week 31 (July 29th to August 04th, 2012)

Highlights:

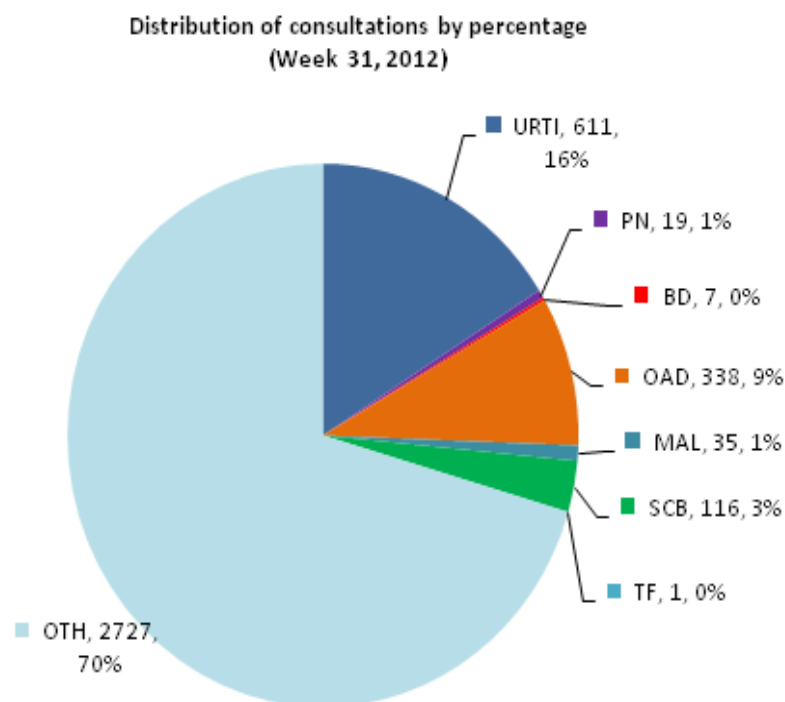
- ❖ **Acute Respiratory tract infections (ARI)** accounted for **16.3% or 630 cases** of the total patients (**3,854** consultations) in all age groups and is showing 0.4% decrease in percentage of ARI patient visits as compared to week 30, 2012.
- ❖ **Other Acute Diarrhea (OAD)** accounted for **9% or 338 cases** of the total patient consultations in all age groups by showing 1% increase in percentage as compared to OAD patient visits in previous week.
- ❖ **Bloody Diarrhea (BD)** shared **0.2% or 7 cases** and also confirmed **Malaria (MAL)** shared **1% or 35 cases** of all patient visits in current week.
- ❖ **Skin Infections (SCB)** reported as **3% or 116 cases** of the total patient consultations.
- ❖ One alert of Dog bite was reported in this week



Weekly disease consultations in Jalozai IDPs camp:-

Figure 1: Distribution of consultations by percentage

Table 1: Cases reported from Jalozai IDPs camp



Disease name	Week-31	
	Cases	%
Upper Respiratory Tract Infection (URTI)	611	15.9
Pneumonia (PN)	19	0.5
Bloody Diarrhea (BD)	7	0.2
Other Acute Diarrhea (OAD)	338	8.8
Acute Watery Diarrhea (AWD)	-	-
Confirmed Malaria (MAL)	35	1
Scabies (SCB)	116	3
Suspected Acute Viral Hepatitis (AVH)	-	-
Suspected Measles (Meas)	-	-
Acute Flaccid Paralysis	-	-
Cutaneous Leishmaniasis (CL)	-	-
Suspected Typhoid Fever (TF)	1	<1
Other diseases (OTH)	2,727	70.7
Total consultations	3,854	

A total **3,854** consultations have been reported through DEWS during week 31 (July 28th to 04th August, 2012) (table 1). **Seven (7) health static units** (Merlin International 4, CAMP Organization 2 and FATA health facility 1) from Jalozai IDPs camp shared daily/weekly disease surveillance data through DEWS.

Major causes for seeking health care percentage trend in Jalojai IDPs camp:-

Figure 2: Weekly disease percentage trend in Jalojai IDPs camp (Week 13 to 31, 2012):

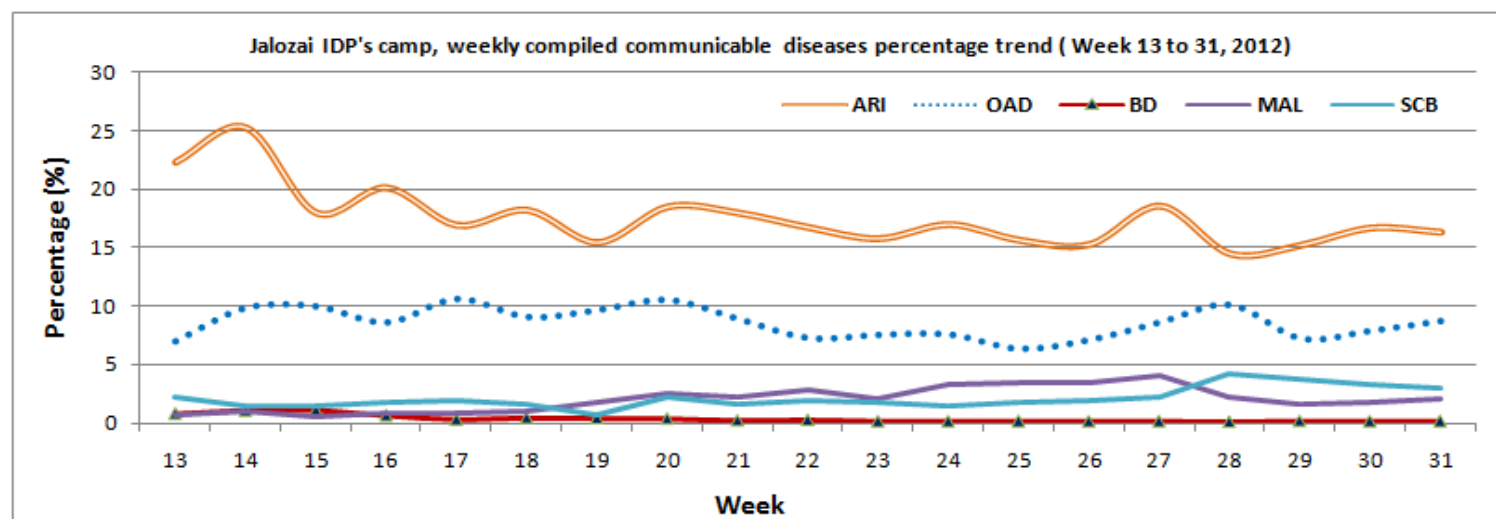


Figure 2 shows percentage trend of major communicable diseases in Jalojai IDPs camp. In this week ARI shared 16.3% or 630 cases is showing 0.4% decrease and OAD shared 9% or 338 cases is showing 1% increase in percentage.

Total consultations reported from all health units in Jalojai IDPs camp:-

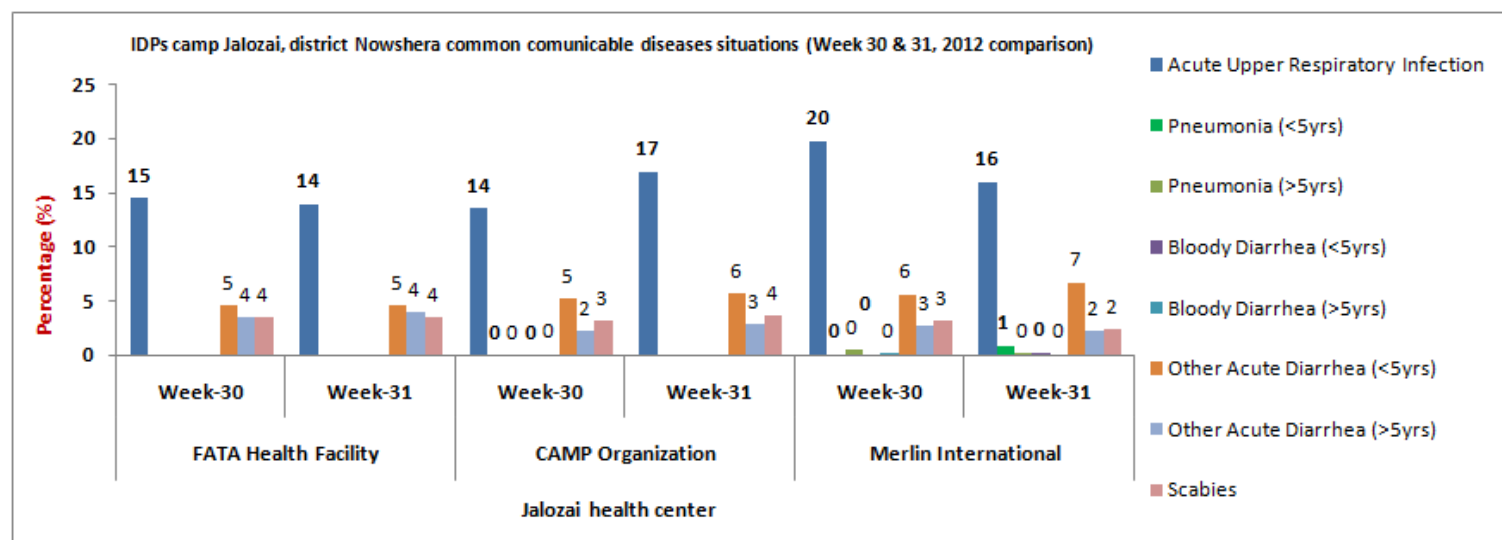
Communicable diseases	CAMP (2 units)				Merlin (4 units)				FATA Health facility (1 unit)			
	Wk-30 (Cases)	%	Wk-31 (Cases)	%	Wk-30 (Cases)	%	Wk-31 (Cases)	%	Wk-30 (Cases)	%	Wk-31 (Cases)	%
Acute Upper Respiratory Infection	176	13.6	220	17	327	19.8	271	16	102	11.4	120	13.9
Pneumonia (<5yrs)	-	-	-	-	2	0.1	16	0.9	-	-	-	-
Pneumonia (>5yrs)	-	-	-	-	7	0.4	3	0.2	-	-	-	-
Bloody Diarrhea (<5yrs)	-	-	-	-	2	0.1	5	0.3	-	-	-	-
Bloody Diarrhea (>5yrs)	1	0.1	-	-	3	0.2	2	0.1	-	-	-	-
Other Acute Diarrhea (<5yrs)	67	5.2	74	5.7	92	5.6	113	6.7	20	2.2	40	4.6
Other Acute Diarrhea (>5yrs)	29	2.2	38	2.9	44	2.7	38	2.2	16	1.8	35	4
Acute Watery Diarrhea (>5yrs)	-	-	-	-	-	-	-	-	-	-	-	-
Confirmed Malaria	22	1.7	19	1.5	18	-	16	0.4	9	1	-	-
Suspected Measles (Meas)	-	-	-	-	-	-	-	-	-	-	-	-
Acute Flaccid Paralysis (AFP)	-	-	-	-	-	-	-	-	-	-	-	-
Scabies (SCB)	42	3.2	47	3.6	51	3.1	39	2.3	20	2.2	30	3.5
Suspected Typhoid Fever (TF)	1	0.1	-	-	2	0.1	1	<1	-	-	-	-
Suspected Acute Viral Hepatitis (AVH)	3	0.2	-	-	-	-	-	-	-	-	-	-
Other diseases	954	73.7	893	69.2	1,105	66.8	1,194	69	724	81.3	640	71.7
Total Consultations	1,295		1,291		1,653		1,698		891		865	

A comparison of the ARI consultations by health units in Jalojai camp on week 31 (July 29 to August 04) shows that high proportion of ARI cases are reported accounted for 16.3% (URTI 15.9% and Pneumonia 0.4%), or 630

cases followed by Other Acute Diarrhea 9% or 338 cases. Bloody diarrhea comprised 0.2% or 7 cases in consolidated data out of total consultations.

Disease trends by percentage in IDPs Jalozai camp:-

Figure 3: Most common communicable diseases situation in Jalozai IDPs camp as percentage of consultations (Week 30 and 31 comparison)



The above figure 3 shows major health causes percentage situation in Jalozai IDPs camp. During week 31 high percentages of OAD and ARI consultations were reported from Merlin health posts as compared to CAMP and FATA health facilities units. In this week OAD 9% and ARI 17.1% were shared from Merlin health facilities, OAD 8.7% and ARI 17% were from CAMP static units and also OAD 8.7% and ARI 14% from FATA health centers. One alert of Dog bite was reported from Merlin health posts in this week.

Distribution of consultations percentage by age and gender

Figure 4: Age and gender wise segregated disease situation in Jalozai IDPs camp, week 31

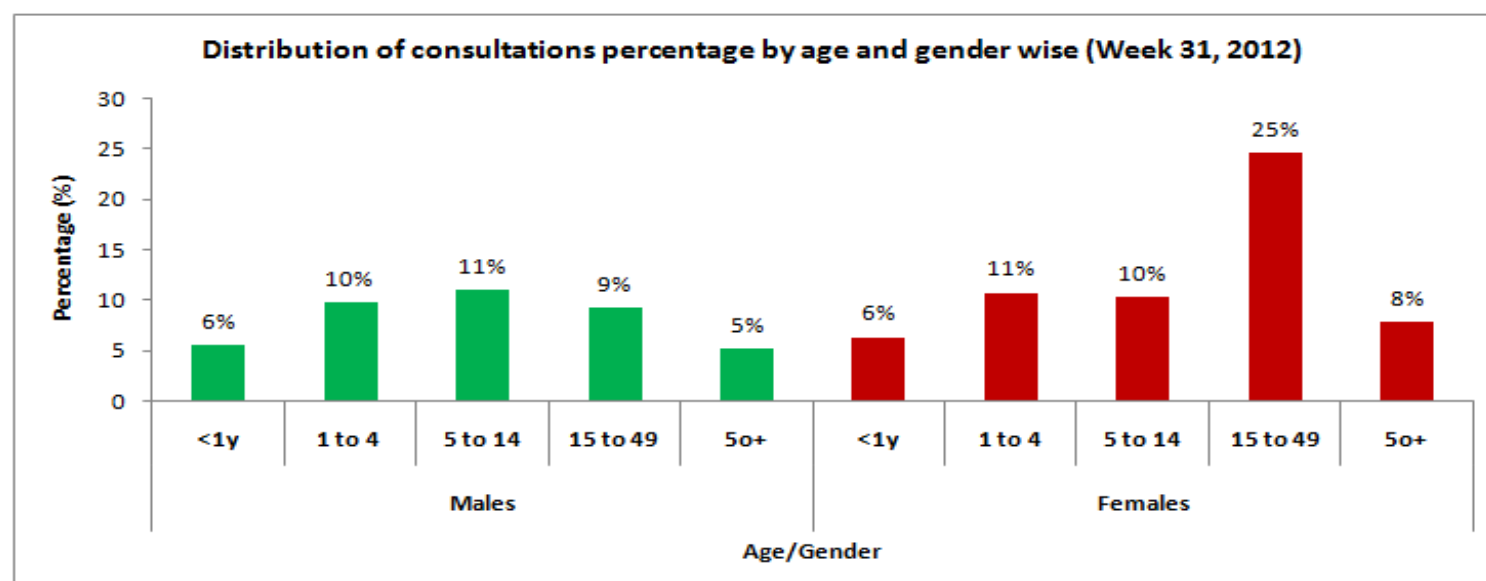


Figure 4 shows comparison of the consultations by gender and age wise in health events in over all diseases, male to female patients' ratio reported was **40% or 1,560 cases** and **60% or 2,294 cases** respectively.

Immunization in Jalozai IDPs camp:-

Table 3 (a & b): Immunization (Jalozai IDP's Camp, Nowshera) from 29th July to 04th August, 2012

a) Routine vaccination of Jalozai IDPs camp (Week 31):

EPI	Routine Vaccination										OPV U5 yrs	Women	TT1	TT2	TT3	TT4	TT5	Total
	Children	BCG	Polio			PENTA			Measles	Fully Immunized								
			Birth	1	2	3	1	2										
<1 year	56	31	40	38	36	40	39	37	28	29	21	Pregnant	32	26	7	2	0	1,663
>=1 year	11	0	11	13	15	11	15	15	34	14	969	Non-Pregnant (15-49y)	56	19	14	4	0	
Total	67	31	51	51	51	51	54	52	62	43	990	-	88	45	21	6	0	

b) Routine vaccination of Jalozai IDPs camp (Consolidated data of all vaccination points in Jalozai IDP camp):

EPI	Routine Vaccination										OPV U5 yrs	Women	TT1	TT2	TT3	TT4	TT5	Total
	Children	BCG	Polio			PENTA			Measles	Fully Immunized								
			Birth	1	2	3	1	2										
<1 year	1,448	918	1,583	1,193	1,046	1,622	1,210	1,052	1,378	794	2,706	Pregnant	1,754	884	124	35	4	84,162
>=1 year	1,307	0	1,276	630	563	1,276	632	564	2,562	491	49,850	Non-Pregnant (15-49y)	5,273	740	784	396	67	
Total	2,755	918	2,859	1,823	1,609	2,898	1,842	1,616	3,940	1,285	52,556	-	7,027	1,624	908	431	71	

Laboratory test conducted in Jalozai IDPs camp:-

Table 4 (a & b): Laboratory test situation in IDPs Jalozai Camp, Nowshera

a) laboratory test situation data in Jalozai IDPs camp (July 29 to August 04, 2012):

Test Name	MP (microscopy)	MP (RDT)*	HB%	HBS	HCV	B.GROUP	B.SUGAR	ESR	LEISHMANIASIS	PREGNENCIES	URINE ALBUMIN	URINE SUGAR	URINE R/E	STOOL R/E	BILIRUBIN	Syphilis	SPUTUM FOR AFB	TOTAL
+Ve	19	35	6	2	0	-	4	-	0	20	1	0	2	0	0	0	0	-
-Ve	30	53	23	25	27	-	30	-	1	32	6	5	3	0	0	25	0	-
Total	49	88	29	27	27	23	34	0	1	52	7	5	5	0	0	25	0	372

* Malaria slides /RDT examined report

Health Centers	Slides/RDT examined	P. Falciparum	P. Vivax	Mixed	Total +ve	Falciparum + Mixed	Slide Positivity Rate (SPR)	Falciparum Rate
Merlin	39	0	16	0	16	0	41.0	0
CAMP	49	0	19	0	19	0	38.8	0
Total	88	0	35	0	35		39.8	0

A total of 88 slides were examined for Malaria in this week. Out of total slides examined 35 (40%) were positive; out of which P. Falciparum 0 (0%), P. Vivax 35 (40%) and Mixed 0 (0%) were shared.

b) laboratory test situation data in Jalozai IDPs camp (Consolidated):

Test Name	MP (microscopy)	MP (RDT)*	HB% ++	HBS	HCV	B.GROUP	B.SUGAR	ESR	LEISHMANIASIS	PREGNENCIES	URINE ALBUMIN	URINE SUGAR	URINE R/E	STOOL R/E	BILIRUBIN	Syphilis	SPUTUM FOR AFB	TOTAL
+Ve	365	417	312	36	30	-	94	-	0	470	79	15	249	59	1	6	0	-
-Ve	611	615	857	943	875	-	707	-	28	337	793	867	744	72	690	829	1	-
Total	976	1,032	1,169	979	905	877	801	14	28	807	872	882	993	131	691	835	1	11,966

Nutrition situation in Jalozai IDPs camp:-

Table 5: Nutrition situation in IDPs Jalozai camp Nowshera

➤ Nutrition situation data (Week 31):

CMAM Finding	No of Children screened (6-59 months)		MAM MUAC < 12.5-11.5 cm		SAM MUAC < 11.5cm		Malnutrition at Risk Borderline MUAC ≤13.5-12.5 cm		No Of PLW Screened		Malnourish PLW	
	M	F	M	F	M	F	M	F	P	L	P. MUAC<21	L. MUAC<21
Number of screened	147	138	6	9	3	1	23	17	45	52	2	1
Total	285		15		4		40		97		3	

➤ Nutrition situation data (Consolidated):

CMAM Finding	No of Children screened (6-59 months)		MAM MUAC < 12.5-11.5 cm		SAM MUAC < 11.5cm		Malnutrition at Risk Borderline MUAC ≤13.5-12.5 cm		No Of PLW Screened		Malnourish PLW	
	M	F	M	F	M	F	M	F	P	L	P. MUAC<21	L. MUAC<21
Number of screened	3,917	4,021	332	464	82	119	428	523	1,476	2,961	200	218
Total	7,938		796		201		951		4,437		418	

Health Education situation in Jalozai IDPs camp:-

Table 6: Health education situation in IDP's Jalozai camp Nowshera

Data of health education situation (Week 31, 2012)					Data of health education situation (Consolidated)				
Sessions	Number of Sessions	Total participants			Sessions	Number of Sessions	Total participants		
		Males	Females	Total			Males	Females	Total
Total Sessions	630	1,837	3,130	4,967	Total Sessions	8,444	22,850	45,869	69,926

MCH in Jalozai IDPs camp:-

Figure 5: MCH situation in IDP's Jalozai camp Nowshera (July 29 to 04, 2012)

