

Disease situation in Jalozai IDP's camp, Khyber Pakhtunkhwa Week 36 (September 2nd to 8th, 2012)

Highlights:

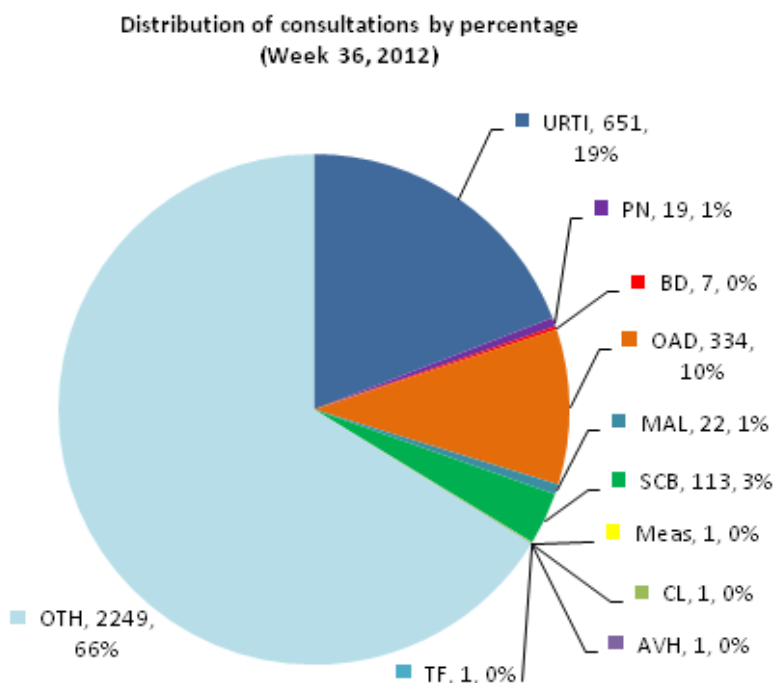
- ❖ **Acute Respiratory tract infections (ARI)** accounted for **19.7% or 670 cases** of the total patients (**3,399** consultations) in all age groups and is showing 3% increase in percentage of ARI patient visits as compared to week 35, 2012.
- ❖ **Other Acute Diarrhea (OAD)** accounted for **10% or 334 cases** of the total patient consultations in all age groups by showing 1.4% increase in percentage as compared to OAD patient visits in previous week.
- ❖ **Bloody Diarrhea (BD)** shared **0.2% or 7 cases** and also confirmed **Malaria (MAL)** shared **0.6% or 22 cases** of all patient visits in current week.
- ❖ **Skin Infections (SCB)** reported as **3.3% or 113 cases** of the total patient consultations.
- ❖ A total of 2 alerts including 1 each for suspected Measles and Cutaneous Leishmaniasis were reported in this week.



Weekly disease consultations in Jalozai IDPs camp:-

Figure 1: Distribution of consultations by percentage

Table 1: Cases reported from Jalozai IDPs camp



Disease name	Week-36	
	Cases	%
Upper Respiratory Tract Infection (URTI)	651	19.2
Pneumonia (PN)	19	0.6
Bloody Diarrhea (BD)	7	0.2
Other Acute Diarrhea (OAD)	334	10
Acute Watery Diarrhea (AWD)	-	-
Confirmed Malaria (MAL)	22	0.6
Scabies (SCB)	113	3.3
Acute Viral Hepatitis (AVH)	1	<1
Suspected Measles (Meas)	1	<1
Acute Flaccid Paralysis	-	-
Cutaneous Leishmaniasis (CL)	1	<1
Suspected Typhoid Fever (TF)	1	<1
Other diseases (OTH)	2,249	66.2
Total consultations	3,399	

A total **3,399** consultations have been reported through DEWS during week 36 (September 2 to 8, 2012) (table 1). **Seven (7) health static units** (Merlin International 4, CAMP Organization 2 and FATA health facility 1) from Jalozai IDPs camp shared daily/weekly disease surveillance data through DEWS.

Major causes for seeking health care percentage trend in Jalojai IDPs camp:-

Figure 2: Weekly disease percentage trend in Jalojai IDPs camp (Week 14 to 36, 2012):

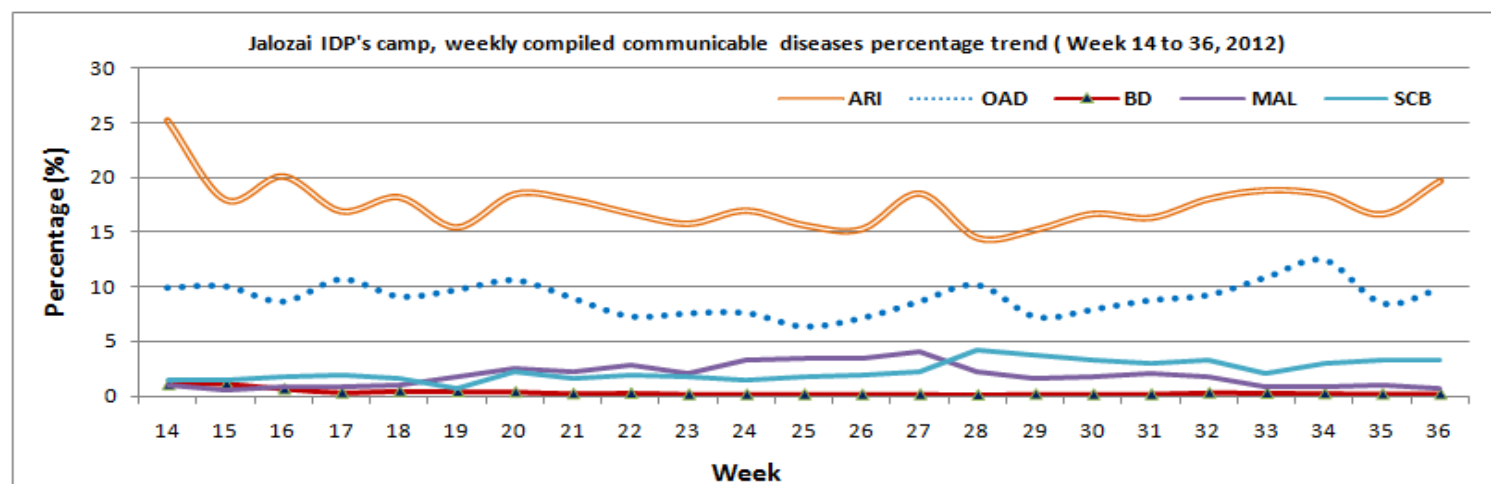


Figure 2 shows percentage trend of major communicable diseases in Jalojai IDPs camp. In this week ARI shared 19.7% or 670 cases is showing 3% increase and OAD shared 10% or 334 cases is showing 1.4% increase in percentage.

Total consultations reported from all health units in Jalojai IDPs camp:-

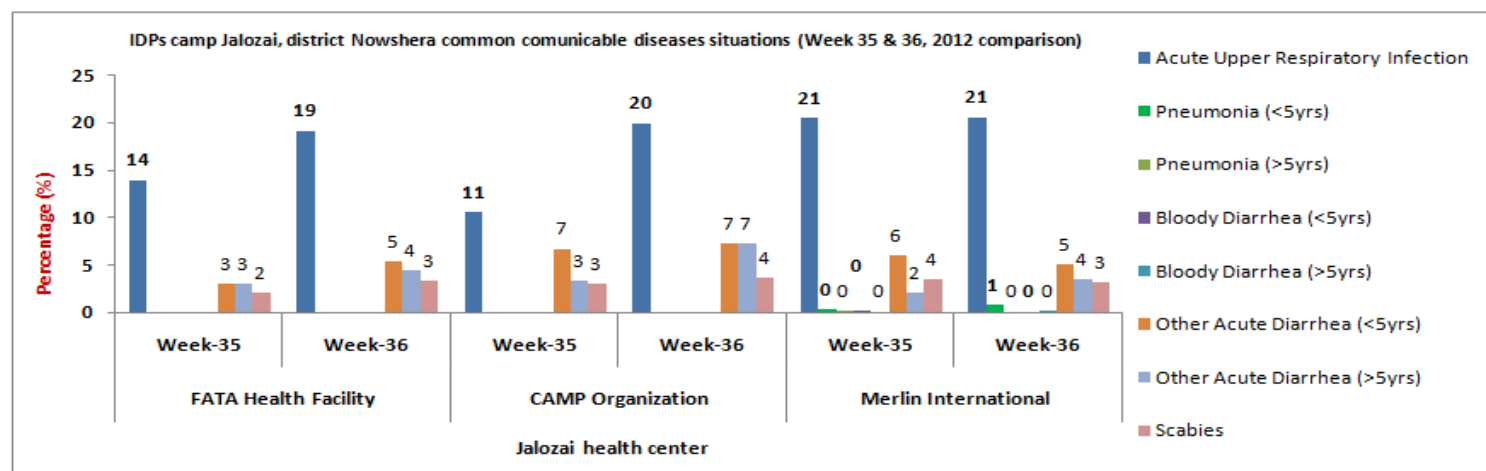
Communicable diseases	CAMP (2 units)				Merlin (4 units)				FATA Health facility (1 unit)			
	Wk-35 (Cases)	%	Wk-36 (Cases)	%	Wk-35	%	Wk-36	%	Wk-35 (Cases)	%	Wk-36 (Cases)	%
Acute Upper Respiratory Infection	152	10.6	160	18	470	20.5	431	20.6	70	14.1	60	14.6
Pneumonia (<5yrs)	-	-	-	-	8	0.3	16	0.8	-	-	-	-
Pneumonia (>5yrs)	-	-	-	-	4	0.2	3	0.1	-	-	-	-
Bloody Diarrhea (<5yrs)	-	-	-	-	6	0.3	3	0.1	-	-	-	-
Bloody Diarrhea (>5yrs)	-	-	-	-	2	0.1	4	0.2	-	-	-	-
Other Acute Diarrhea (<5yrs)	96	6.7	64	7.2	138	6	106	5.1	15	3	14	3.4
Other Acute Diarrhea (>5yrs)	48	3.3	64	7.2	47	2	74	3.5	14	2.8	12	3
Acute Watery Diarrhea (>5yrs)	-	-	-	-	-	-	-	-	-	-	-	-
Confirmed Malaria	17	1.2	13	1.5	21	1	9	0.4	-	-	-	-
Suspected Measles (Meas)	-	-	-	-	-	-	1	<1	-	-	-	-
Acute Flaccid Paralysis (AFP)	-	-	-	-	-	-	-	-	-	-	-	-
Scabies (SCB)	45	3.1	33	3.7	80	3.5	68	3.2	10	2	12	3
Suspected Typhoid Fever (TF)	2	0.1	1	0.1	-	-	-	-	-	-	-	-
Acute Viral Hepatitis (AVH)	-	-	-	-	-	-	1	<1	-	-	-	-
Cutaneous Leishmaniasis (CL)	-	-	-	-	-	-	1	<1	-	-	-	-
Other diseases	1,076	75	560	62.6	1,519	66.2	1,376	65.7	386	78	313	76.2
Total Consultations	1,436		895		2,295		2,093		495		411	

A comparison of the ARI consultations by health units in Jalojai camp on week 36 (September 2 to 8) shows that high proportion of ARI cases are reported accounted for 19.7% (URTI 19.2% and Pneumonia 0.6%), or 670 cases

followed by Other Acute Diarrhea 10% or 334 cases. Bloody diarrhea comprised 0.2% or 7 cases in consolidated data out of total consultations.

Disease trends by percentage in IDPs Jalozai camp:-

Figure 3: Most common communicable diseases situation in Jalozai IDPs camp as percentage of consultations (Week 35 and 36 comparison)



The above figure 3 shows major health causes percentage situation in Jalozai IDPs camp. During week 36 high percentages of OAD consultations were reported from CAMP health units as compared to Merlin and FATA health facilities. Similarly high percentage of ARI consultations were reported from Merlin health posts as compared to CAMP health facilities units and FATA health facility. In this week OAD 14.3% and ARI 18% were shared from CAMP health facilities units and FATA health facility. In this week OAD 8.6% and ARI 21.5% from Merlin health centers and also OAD 6.3% and ARI 14.6% were from FATA health unit. Total of 2 alerts including 1 each for suspected Measles and Cutaneous Leishmaniasis from Merlin health units were reported in this week.

Distribution of consultations percentage by age and gender

Figure 4: Age and gender wise segregated disease situation in Jalozai IDPs camp, week 36

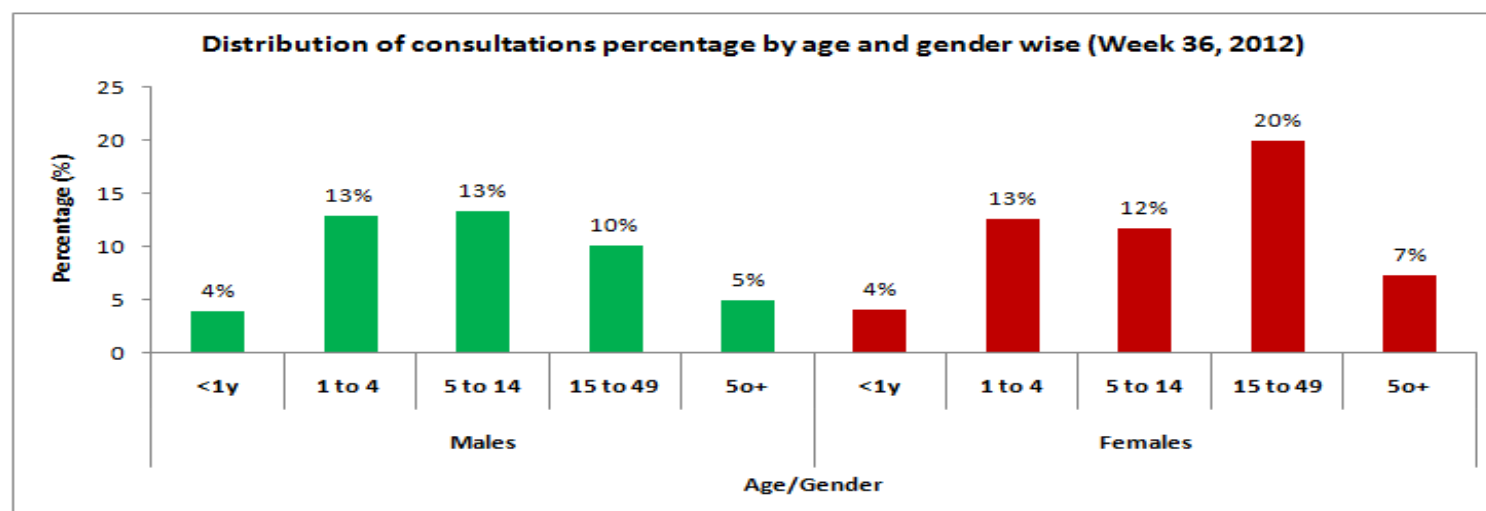


Figure 4 shows comparison of the consultations by gender and age wise in health events in over all diseases, male to female patients' ratio reported was **45% or 1,519** cases and **55% or 1,880** cases respectively.

Immunization in Jalozai IDPs camp:-

Table 3 (a & b): Immunization (Jalozai IDP's Camp, Nowshera) from 02nd to 8th September, 2012

a) Routine vaccination of Jalozai IDPs camp (Week 36):

EPI	Routine Vaccination										OPV U5 yrs	Women	TT1	TT2	TT3	TT4	TT5	Total
	Children	BCG	Polio			PENTA			Measles	Fully Immunized								
			Birth	1	2	3	1	2										
<1 year	45	16	74	43	43	72	42	42	48	41	45	Pregnant	88	38	1	0	0	2,666
>=1 year	3	0	19	17	16	21	17	16	35	12	1,600	Non-Pregnant (15-49y)	220	31	17	3	0	
Total	48	16	93	60	59	93	59	59	83	53	1,645	-	308	69	18	3	0	

b) Routine vaccination of Jalozai IDPs camp (Consolidated data of all vaccination points in Jalozai IDP camp):

EPI	Routine Vaccination										OPV U5 yrs	Women	TT1	TT2	TT3	TT4	TT5	Total
	Children	BCG	Polio			PENTA			Measles	Fully Immunized								
			Birth	1	2	3	1	2										
<1 year	1,662	1,049	1,856	1,386	1,269	1,889	1,407	1,268	1,562	971	2,819	Pregnant	1,985	1,051	137	41	5	93,876
>=1 year	1,335	0	1,338	699	656	1,340	701	657	2,719	580	55,571	Non-Pregnant (15-49y)	5,763	838	842	409	71	
Total	2,997	1,049	3,194	2,085	1,925	3,229	2,108	1,925	4,281	1,551	58,390	-	7,748	1,889	979	450	76	

Laboratory test conducted in Jalozai IDPs camp:-

Table 4 (a & b): Laboratory test situation in IDPs Jalozai Camp, Nowshera

a) laboratory test situation data in Jalozai IDPs camp (September 2 to 8, 2012):

Test Name	MP (microscopy)	MP (RDT)*	HB%	HBS	HCV	B.GROUP	B.SUGAR	ESR	LEISHMANIASIS	PREGNENCIES	URINE ALBUMIN	URINE SUGAR	URINE R/E	STOOL R/E	BILIRUBIN	Syphilis	SPUTUM FOR AFB	TOTAL
+Ve	23	22	12	0	2	-	6	-	0	23	0	0	2	2	0	0	0	-
-Ve	38	60	42	51	47	-	10	-	2	26	4	4	2	3	0	42	0	-
Total	61	82	54	51	49	16	16	1	2	49	4	4	4	5	0	42	0	440

* Malaria slides /RDT examined report

Health Centers	Slides/RDT examined	P. Falciparum	P. Vivax	Mixed	Total +ve	Falciparum + Mixed	Slide Positivity Rate (SPR)	Falciparum Rate
Merlin	57	0	9	0	9	0	15.8	0
CAMP	25	0	13	0	13	0	52.0	0
Total	82	0	22	0	22	0	26.8	0

A total of 82 slides were examined for Malaria in this week. Out of total slides examined 22 (27%) were positive; out of which P. Falciparum 0 (0%), P. Vivax 22 (27%) and Mixed 0 (0%) were shared.

b) laboratory test situation data in Jalozai IDPs camp (Consolidated):

Test Name	MP (microscopy)	MP (RDT)*	HB% ++	HBS	HCV	B.GROUP	B.SUGAR	ESR	LEISHMANIASIS	PREGNENCIES	URINE ALBUMIN	URINE SUGAR	URINE R/E	STOOL R/E	BILIRUBIN	Syphilis	SPUTUM FOR AFB	TOTAL
+Ve	435	489	355	43	37	-	113	-	0	576	79	15	266	73	1	6	0	-
-Ve	768	781	1,011	1,134	1,064	-	844	-	30	436	817	890	756	91	690	983	1	-
Total	1,203	1,270	1,366	1,177	1,101	1,016	957	16	30	1,012	896	905	1,022	164	691	989	1	13,816

Nutrition situation in Jalozai IDPs camp:-

Table 5: Nutrition situation in IDPs Jalozai camp Nowshera

➤ Nutrition situation data (Week 36):

CMAM Finding	No of Children screened (6-59 months)		MAM MUAC < 12.5-11.5 cm		SAM MUAC < 11.5cm		Malnutrition at Risk Borderline MUAC ≤13.5-12.5 cm		No Of PLW Screened		Malnourish PLW	
	M	F	M	F	M	F	M	F	P	L	P. MUAC<21	L. MUAC<21
Number of screened	127	168	17	24	0	1	16	26	74	59	10	3
Total	295		41		1		42		133		13	

➤ Nutrition situation data (Consolidated):

CMAM Finding	No of Children screened (6-59 months)		MAM MUAC < 12.5-11.5 cm		SAM MUAC < 11.5cm		Malnutrition at Risk Borderline MUAC ≤13.5-12.5 cm		No Of PLW Screened		Malnourish PLW	
	M	F	M	F	M	F	M	F	P	L	P. MUAC<21	L. MUAC<21
Number of screened	4,388	4,564	371	516	91	123	476	616	1,692	3,150	221	222
Total	8,952		887		214		1,092		4,842		443	

Health Education situation in Jalozai IDPs camp:-

Table 6: Health education situation in IDP's Jalozai camp Nowshera

Data of health education situation (Week 36, 2012)					Data of health education situation (Consolidated)				
Sessions	Number of Sessions	Total participants			Sessions	Number of Sessions	Total participants		
		Males	Females	Total			Males	Females	Total
Total Sessions	423	829	2,172	3,001	Total Sessions	11,365	30,379	58,757	89,136

MCH in Jalozai IDPs camp:-

Figure 5: MCH situation in IDP's Jalozai camp Nowshera (September 2 to 8, 2012)

