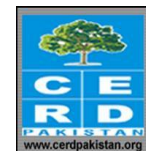


## Disease situation in Jalojai IDP's camp, Khyber Pakhtunkhwa Week 34 (August 19<sup>th</sup> to 25<sup>th</sup>, 2012)

### Highlights:

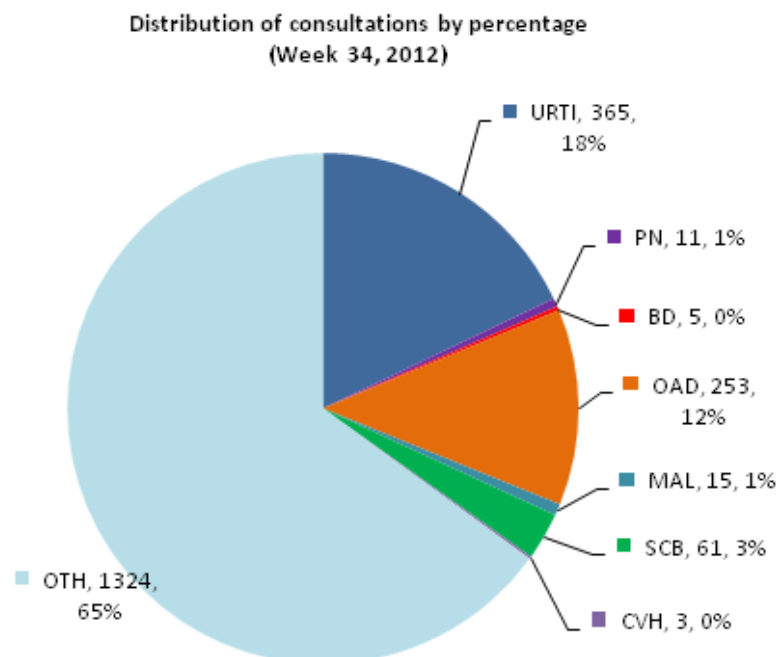
- ❖ **Acute Respiratory tract infections (ARI)** accounted for **18.5% or 376 cases** of the total patients (**2,037** consultations) in all age groups and is showing 0.4% decrease in percentage of ARI patient visits as compared to week 33, 2012.
- ❖ **Other Acute Diarrhea (OAD)** accounted for **12.4% or 253 cases** of the total patient consultations in all age groups by showing 1.5% increase in percentage as compared to OAD patient visits in previous week.
- ❖ **Bloody Diarrhea (BD)** shared **0.2% or 5 cases** and also confirmed **Malaria (MAL)** shared **1% or 15 cases** of all patient visits in current week.
- ❖ **Skin Infections (SCB)** reported as **3% or 61 cases** of the total patient consultations.
- ❖ No alert was reported in this week



### Weekly disease consultations in Jalojai IDPs camp:-

Figure 1: Distribution of consultations by percentage

Table 1: Cases reported from Jalojai IDPs camp



Disease name	Week-34	
	Cases	%
Upper Respiratory Tract Infection (URTI)	365	18
Pneumonia (PN)	11	0.5
Bloody Diarrhea (BD)	5	0.2
Other Acute Diarrhea (OAD)	253	12.4
Acute Watery Diarrhea (AWD)	-	-
Confirmed Malaria (MAL)	15	1
Scabies (SCB)	61	3
Chronic Viral Hepatitis (CVH)	3	0.1
Suspected Measles (Meas)	-	-
Acute Flaccid Paralysis	-	-
Cutaneous Leishmaniasis (CL)	-	-
Suspected Typhoid Fever (TF)	-	-
Other diseases (OTH)	1,324	65
<b>Total consultations</b>	<b>2,037</b>	

A total **2,037** consultations have been reported through DEWS during week 34 (August 19 to 25, 2012) (table 1). **Seven (7) health static units** (Merlin International 4, CAMP Organization 2 and FATA health facility 1) from Jalojai IDPs camp shared daily/weekly disease surveillance data through DEWS.

## Major causes for seeking health care percentage trend in Jalojai IDPs camp:-

Figure 2: Weekly disease percentage trend in Jalojai IDPs camp (Week 14 to 34, 2012):

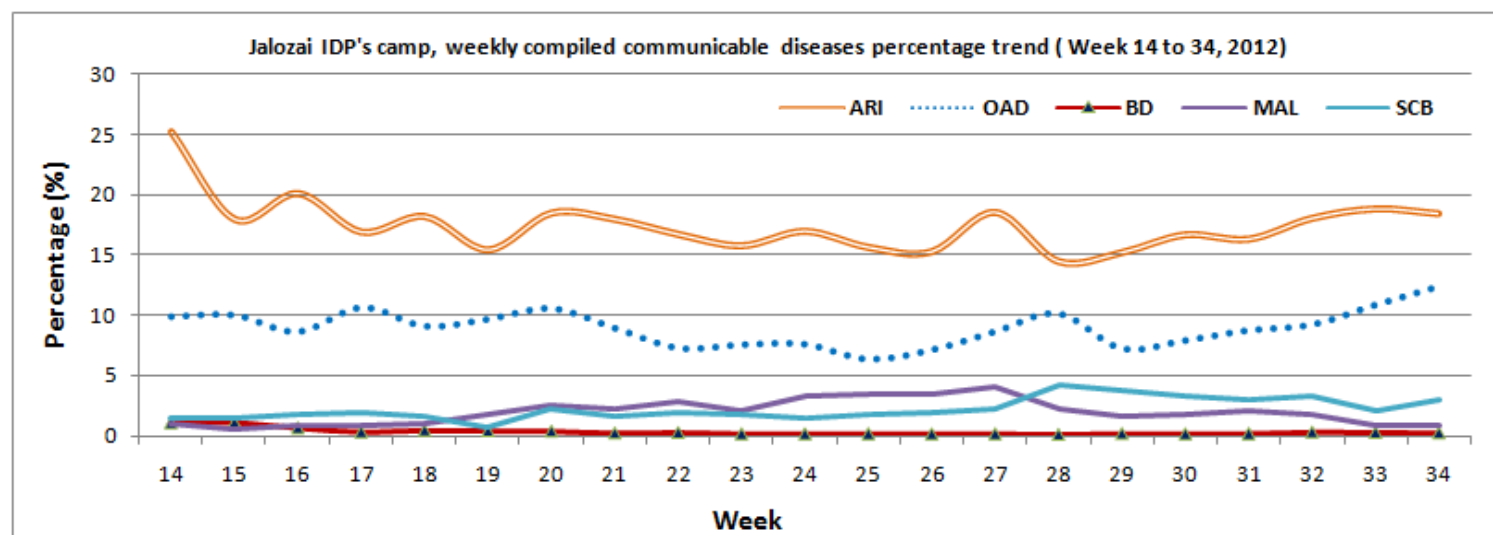


Figure 2 shows percentage trend of major communicable diseases in Jalojai IDPs camp. In this week ARI shared 18.5% or 376 cases is showing 0.4% decrease and OAD shared 12.4% or 253 cases is showing 1.5% increase in percentage.

## Total consultations reported from all health units in Jalojai IDPs camp:-

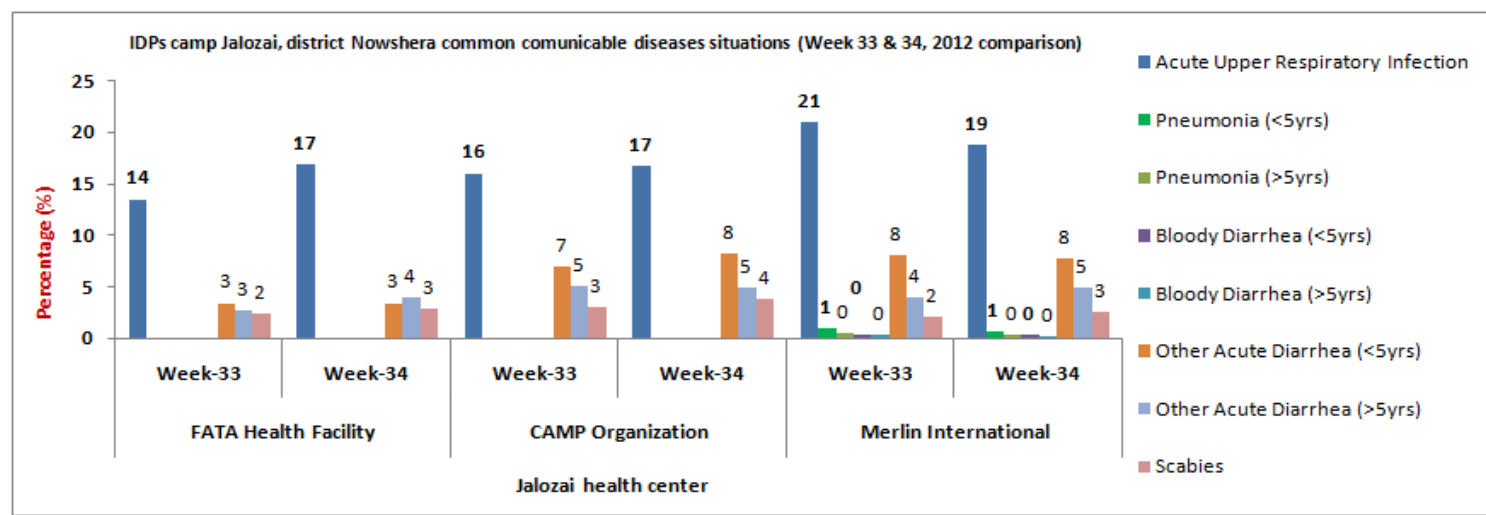
Communicable diseases	CAMP (2 units)				Merlin (4 units)				FATA Health facility (1 unit)			
	Wk-33 (Cases)	%	Wk-34 (Cases)	%	Wk-33 (Cases)	%	Wk-34 (Cases)	%	Wk-33 (Cases)	%	Wk-34 (Cases)	%
Acute Upper Respiratory Infection	160	15.9	118	16.7	304	20.9	217	18.8	40	13.5	30	17
Pneumonia (<5yrs)	-	-	-	-	10	0.7	8	0.7	-	-	-	-
Pneumonia (>5yrs)	-	-	-	-	6	0.4	3	0.3	-	-	-	-
Bloody Diarrhea (<5yrs)	-	-	-	-	4	0.3	3	0.3	-	-	-	-
Bloody Diarrhea (>5yrs)	-	-	-	-	4	0.3	2	0.2	-	-	-	-
Other Acute Diarrhea (<5yrs)	65	6.5	58	8.2	117	8	90	7.8	10	3.4	6	3.4
Other Acute Diarrhea (>5yrs)	49	4.9	35	4.9	51	3.5	57	4.9	8	2.7	7	4
Acute Watery Diarrhea (>5yrs)	-	-	-	-	-	-	-	-	-	-	-	-
Confirmed Malaria	8	<1	7	1	10	<1	8	1	-	-	-	-
Suspected Measles (Meas)	-	-	-	-	-	-	-	-	-	-	-	-
Acute Flaccid Paralysis (AFP)	-	-	-	-	-	-	-	-	-	-	-	-
Scabies (SCB)	27	2.7	27	3.8	24	1.6	29	2.5	7	2.7	5	3
Suspected Typhoid Fever (TF)	2	0.2	-	-	-	-	-	-	-	-	-	-
Chronic Viral Hepatitis (CVH)	-	-	-	-	-	-	3	0.3	-	-	-	-
Other diseases	693	69	463	65.4	928	63.6	732	62.5	231	78	129	73
<b>Total Consultations</b>	<b>1,004</b>		<b>708</b>		<b>1,458</b>		<b>1,152</b>		<b>296</b>		<b>177</b>	

A comparison of the ARI consultations by health units in Jalojai camp on week 34 (August 19 to 25) shows that high proportion of ARI cases are reported accounted for 18.5% (URTI 18% and Pneumonia 0.5%), or 376 cases

followed by Other Acute Diarrhea 12.4% or 253 cases. Bloody diarrhea comprised 0.2% or 5 cases in consolidated data out of total consultations.

### Disease trends by percentage in IDPs Jalozai camp:-

**Figure 3: Most common communicable diseases situation in Jalozai IDPs camp as percentage of consultations (Week 33 and 34 comparison)**



The above figure 3 shows major health causes percentage situation in Jalozai IDPs camp. During week 34 high percentages of OAD consultations were reported from CAMP health units as compared to Merlin and FATA health facilities. Similarly high percentage of ARI consultations were reported from Merlin health posts as compared to FATA health facility and CAMP health facilities units. In this week OAD 13.1% and ARI 16.7% were shared from CAMP health facilities, OAD 12.8% and ARI 18.8% from Merlin and also OAD 7.3% and ARI 17% were from FATA health unit. No alert was reported in this week.

### Distribution of consultations percentage by age and gender

**Figure 4: Age and gender wise segregated disease situation in Jalozai IDPs camp, week 34**

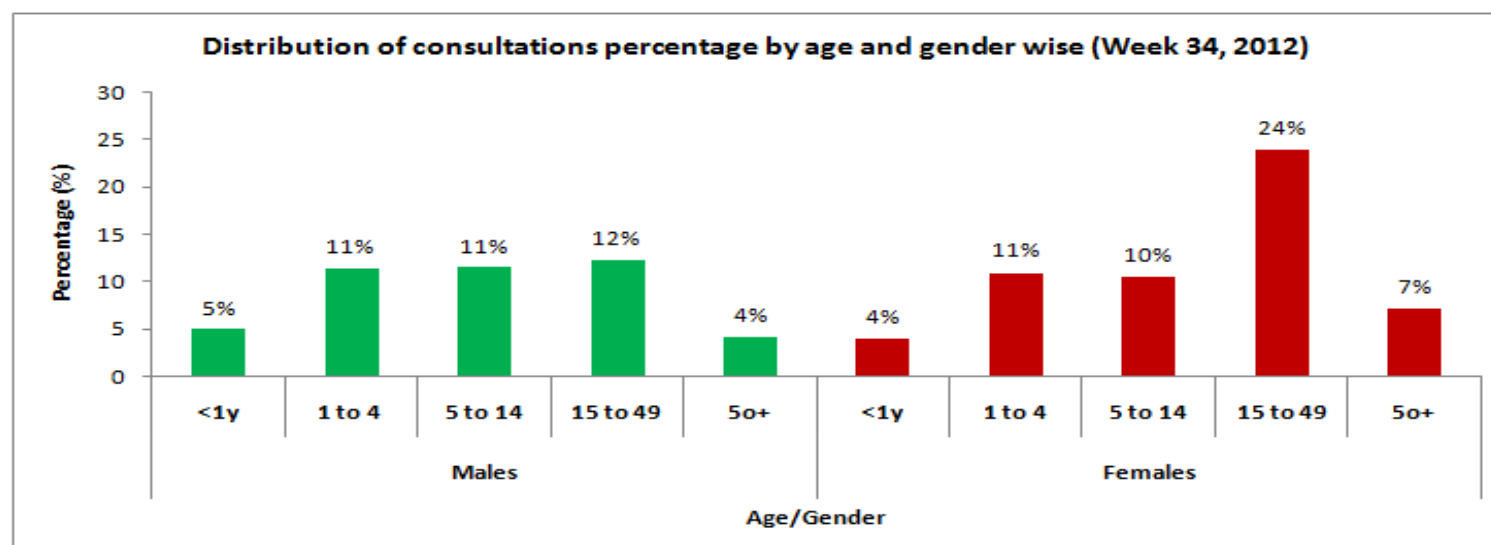


Figure 4 shows comparison of the consultations by gender and age wise in health events in over all diseases, male to female patients' ratio reported was **44% or 891 cases** and **56% or 1,146 cases** respectively.

## Immunization in Jalozai IDPs camp:-

Table 3 (a & b): Immunization (Jalozai IDP's Camp, Nowshera) from 19<sup>th</sup> to 25<sup>th</sup> August, 2012

### a) Routine vaccination of Jalozai IDPs camp (Week 34):

EPI	Routine Vaccination										OPV U5 yrs	Women	TT1	TT2	TT3	TT4	TT5	Total
	Children	BCG	Polio			PENTA			Measles	Fully Immunized								
			Birth	1	2	3	1	2										
<1 year	50	21	27	24	29	27	24	29	27	19	10	Pregnant	28	18	2	0	0	1,040
>=1 year	5	0	3	8	12	3	8	12	18	9	618	Non-Pregnant (15-49y)	10	14	4	0	0	
<b>Total</b>	<b>55</b>	<b>21</b>	<b>22</b>	<b>28</b>	<b>34</b>	<b>30</b>	<b>32</b>	<b>41</b>	<b>45</b>	<b>28</b>	<b>628</b>	<b>-</b>	<b>38</b>	<b>32</b>	<b>6</b>	<b>0</b>	<b>0</b>	<b>1,040</b>

### b) Routine vaccination of Jalozai IDPs camp (Consolidated data of all vaccination points in Jalozai IDP camp):

EPI	Routine Vaccination										OPV U5 yrs	Women	TT1	TT2	TT3	TT4	TT5	Total
	Children	BCG	Polio			PENTA			Measles	Fully Immunized								
			Birth	1	2	3	1	2										
<1 year	1,552	990	1,682	1,272	1,151	1,721	1,289	1,157	1,446	880	2,737	Pregnant	1,830	957	132	37	4	87,903
>=1 year	1,321	0	1,293	659	606	1,293	661	607	2,628	525	52,067	Non-Pregnant (15-49y)	5,370	784	802	401	68	
<b>Total</b>	<b>2,873</b>	<b>990</b>	<b>2,967</b>	<b>1,927</b>	<b>1,750</b>	<b>3,014</b>	<b>1,950</b>	<b>1,764</b>	<b>4,074</b>	<b>1,405</b>	<b>54,804</b>	<b>-</b>	<b>7,200</b>	<b>1,741</b>	<b>934</b>	<b>438</b>	<b>72</b>	<b>87,903</b>

## Laboratory test conducted in Jalozai IDPs camp:-

Table 4 (a & b): Laboratory test situation in IDPs Jalozai Camp, Nowshera

### a) laboratory test situation data in Jalozai IDPs camp (August 19 to 25, 2012):

Test Name	MP (microscopy)	MP (RDT)*	HB%	HBS	HCV	B.GROUP	B.SUGAR	ESR	LEISHMANIASIS	PREGNENCIES	URINE ALBUMIN	URINE SUGAR	URINE R/E	STOOL R/E	BILIRUBIN	Syphilis	SPUTUM FOR AFB	TOTAL
<b>+Ve</b>	7	15	5	0	2	-	1	-	0	16	0	0	4	1	0	0	0	-
<b>-Ve</b>	7	26	12	22	20	-	16	-	0	16	9	8	4	3	0	12	0	-
<b>Total</b>	<b>14</b>	<b>41</b>	<b>17</b>	<b>22</b>	<b>22</b>	<b>16</b>	<b>17</b>	<b>1</b>	<b>0</b>	<b>32</b>	<b>9</b>	<b>8</b>	<b>8</b>	<b>4</b>	<b>0</b>	<b>12</b>	<b>0</b>	<b>223</b>

\* Malaria slides /RDT examined report

Health Centers	Slides/RDT examined	P. Falciparum	P. Vivax	Mixed	Total +ve	Falciparum + Mixed	Slide Positivity Rate (SPR)	Falciparum Rate
Merlin	27	0	8	0	8	0	29.6	0
CAMP	14	0	7	0	7	0	50.0	0
<b>Total</b>	<b>41</b>	<b>0</b>	<b>15</b>	<b>0</b>	<b>15</b>	<b>0</b>	<b>36.6</b>	<b>0</b>

A total of 41 slides were examined for Malaria in this week. Out of total slides examined 15 (36.6%) were positive; out of which P. Falciparum 0 (0%), P. Vivax 15 (36.6%) and Mixed 0 (0%) were shared.

**b) laboratory test situation data in Jalozai IDPs camp (Consolidated):**

Test Name	MP (microscopy)	MP (RDT)*	HB% ++	HBS	HCV	B.GROUP	B.SUGAR	ESR	LEISHMANIASIS	PREGNENCIES	URINE ALBUMIN	URINE SUGAR	URINE R/E	STOOL R/E	BILIRUBIN	Syphilis	SPUTUM FOR AFB	TOTAL
<b>+Ve</b>	395	456	334	41	33	-	102	-	0	527	79	15	260	68	1	6	0	-
<b>-Ve</b>	694	685	916	1,021	955	-	784	-	28	380	809	882	751	84	690	894	1	-
<b>Total</b>	<b>1,089</b>	<b>1,141</b>	<b>1,250</b>	<b>1,062</b>	<b>988</b>	<b>945</b>	<b>886</b>	<b>15</b>	<b>28</b>	<b>907</b>	<b>888</b>	<b>897</b>	<b>1,011</b>	<b>152</b>	<b>691</b>	<b>900</b>	<b>1</b>	<b>12,824</b>

**Nutrition situation in Jalozai IDPs camp:-**

Table 5: Nutrition situation in IDPs Jalozai camp Nowshera

➤ **Nutrition situation data (Week 34):**

CMAM Finding	No of Children screened (6-59 months)		MAM MUAC < 12.5-11.5 cm		SAM MUAC < 11.5cm		Malnutrition at Risk Borderline MUAC ≤13.5-12.5 cm		No Of PLW Screened		Malnourish PLW	
	M	F	M	F	M	F	M	F	P	L	P. MUAC<21	L. MUAC<21
Number of screened	41	46	0	1	1	1	4	9	11	12	0	0
<b>Total</b>	<b>87</b>		<b>1</b>		<b>2</b>		<b>13</b>		<b>23</b>		<b>0</b>	

➤ **Nutrition situation data (Consolidated):**

CMAM Finding	No of Children screened (6-59 months)		MAM MUAC < 12.5-11.5 cm		SAM MUAC < 11.5cm		Malnutrition at Risk Borderline MUAC ≤13.5-12.5 cm		No Of PLW Screened		Malnourish PLW	
	M	F	M	F	M	F	M	F	P	L	P. MUAC<21	L. MUAC<21
Number of screened	4,150	4,278	349	476	88	120	451	574	1,570	3,052	208	219
<b>Total</b>	<b>8,428</b>		<b>825</b>		<b>208</b>		<b>1,025</b>		<b>4,622</b>		<b>427</b>	

## Health Education situation in Jalojai IDPs camp:-

Table 6: Health education situation in IDP's Jalojai camp Nowshera

Data of health education situation (Week 34, 2012)					Data of health education situation (Consolidated)				
Sessions	Number of Sessions	Total participants			Sessions	Number of Sessions	Total participants		
		Males	Females	Total			Males	Females	Total
Total Sessions	336	991	1,332	2,323	Total Sessions	9,837	26,840	51,732	78,572

## MCH in Jalojai IDPs camp:-

Figure 5: MCH situation in IDP's Jalojai camp Nowshera (August 19 to 25, 2012 )

