

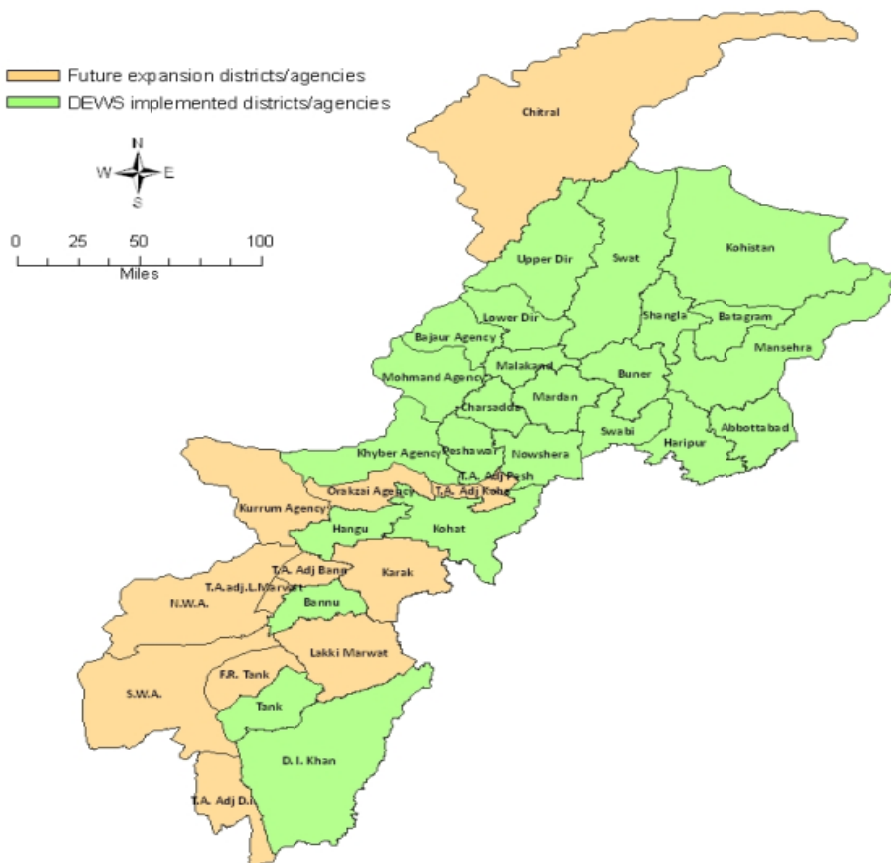
Weekly Epidemiological Bulletin

Electronic Disease Early Warning System & Response (eDEWS)

in Khyber Pakhtunkhwa and FATA

Epidemiological Week-8 (19th February to 25th February, 2012)

DEWS implemented districts/agencies in Khyber Pukhtunkhwa/FATA



Priority diseases under surveillance in eDEWS

Respiratory Diseases

Acute (upper) respiratory infections
Pneumonia <5 years
Pneumonia > 5 years
Suspected Diphtheria
Suspected Pertussis

Gastro Intestinal Diseases

Acute Watery Diarrhea <5 year
Acute Watery Diarrhea > 5 year
Bloody Diarrhea <5 years
Bloody Diarrhea > 5 years
Other Acute Diarrhea < 5 years
Other Acute Diarrhea > 5 years
Suspected Enteric/Typhoid Fever

Other Communicable

Suspected Malaria
Suspected Meningitis
Suspected Dengue Fever
Suspected Viral Hemorrhagic Fever
Pyrexia Of Unknown Origin

Vaccine Preventable

Suspected Measles
Suspected Acute Viral Hepatitis
Chronic Viral Hepatitis
Neonatal Tetanus
Acute Flaccid Paralysis

Skin Disease

Scabies
Cutaneous Leishmaniasis

Injuries /Poisoning

Injuries
Snake bite

Other unusual diseases

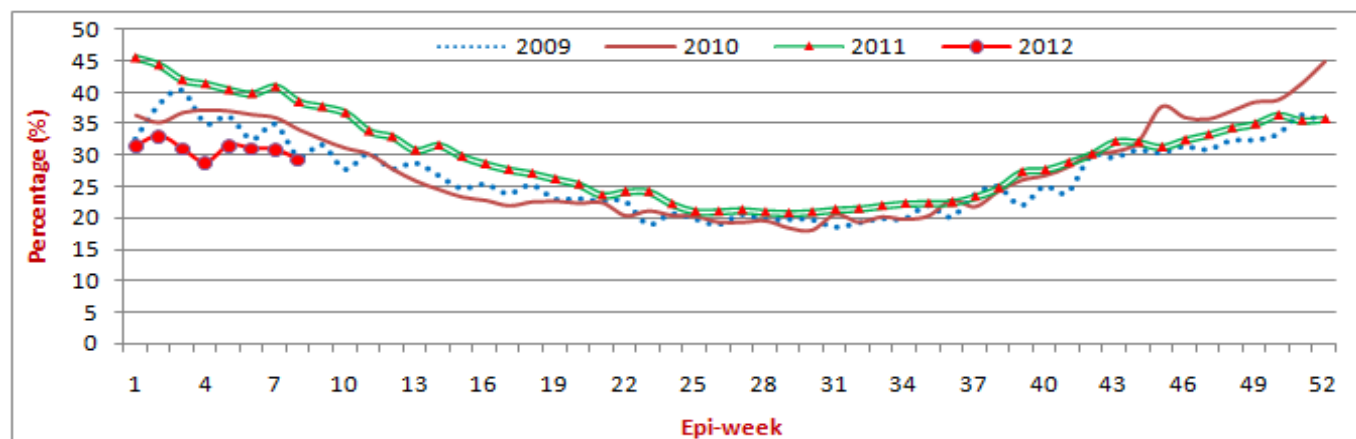
Other unusual diseases

HIGHLIGHTS

- ❖ 17 districts and 2 agencies provided surveillance data to the eDEWS this week from 483 health facilities on time.
- ❖ A total of 124,140 consultations were reported through eDEWS of which 29% or 36,362 cases were Acute Upper Respiratory Infection, is still the highest cause of morbidity of total consultations were showing 2% decrease in percentage as compared to week 7.
- ❖ Other Acute Diarrhoea shared 5% or 6,287 cases of the total consultations showing no change in percentage as compared to three weeks.
- ❖ Pyrexia of Unknown Origin accounted for 5% or 5,721 cases out of total consultations.
- ❖ Skin Infection (Skin Inf.) reported at 3% or 3,338 cases and Typhoid Fever comprised only 0.2% or 290 cases out of total consultations.
- ❖ A total of 73 alerts and 3 outbreaks (3 for suspected Measles) were reported in this week, 54 alerts for Suspected measles, 5 for AWD, 3 for NNT, 8 for cutaneous Leishmaniasis, 2 for Pertussis while One (1) for Bloody Diarrhoea.

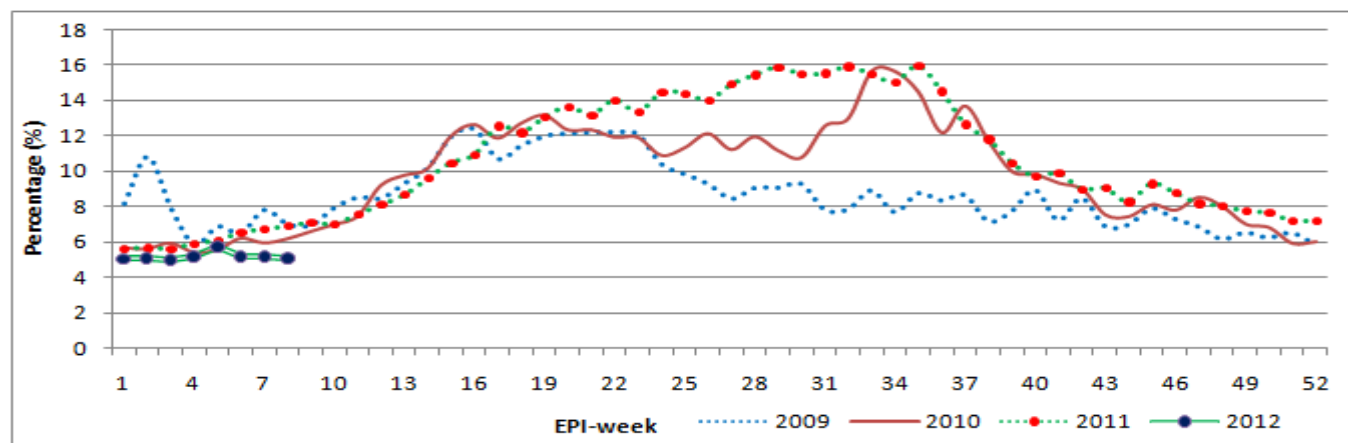
Compiled situation in Khyber Pakhtunkhwa & FATA

Figure-1: Four years trend of Acute Respiratory Tract Infection in Khyber Pakhtunkhwa/FATA (2009, 2010, 2011 and 2012)



The above graph shows the trend of Acute Respiratory Tract Infection cases out of total consultations reported to DEWS in 2009, 2010, 2011 and 2012 up until now. In this week 8, 2012 ARTI consultations shows 29% or 36,362 cases of total cases which shows 2% decrease in percentage as compared to week 7.

Figure-2: Four years trend of Other Acute Diarrhea in Khyber Pakhtunkhwa/FATA (2009, 2010, 2011 and 2012)



The above graph shows the trend of Other Acute Diarrhoea (OAD) cases out of total consultations reported to DEWS in 2009, 2010, 2011 and 2012 up until now. In this week 8, 2012 other acute diarrhoea shared 5% or 6,287 cases were showing no change as compared to last two weeks.

Table-1: Leading causes of seeking health care in flood affected districts, compiled weekly reports

Disease name	Week-5	Week-6	Week-7	Week-8	Total Consultations (1 st Jan to 25 th Feb, 2012)
Acute Diarrhoea	4,980 (6%)	6,019 (5%)	5,937 (5%)	6,287 (5%)	41,229 (5%)
Bloody Diarrhoea	661 (1%)	772 (1%)	862 (1%)	832 (1%)	5,559 (1%)
Suspected Malaria	759 (1%)	1,241 (1%)	1,132 (1%)	1,159 (1%)	7,961 (1%)
Skin Diseases	2,406 (3%)	2,815 (2%)	2,972 (3%)	3,338 (3%)	20,069 (3%)
Pyrexia of Unknown Origin	3,770 (4%)	5,656 (5%)	5,336 (5%)	5,721 (5%)	33,447 (4%)
Acute Respiratory Infection	27,435 (32%)	36,172 (31%)	35,384 (31%)	36,362 (29%)	245,729 (31%)
Total Consultations	86,865	116,373	114,342	124,140	797,149

The above table shows compiled communicable diseases cases from weekly reports and proportional morbidity through eDEWS reported.

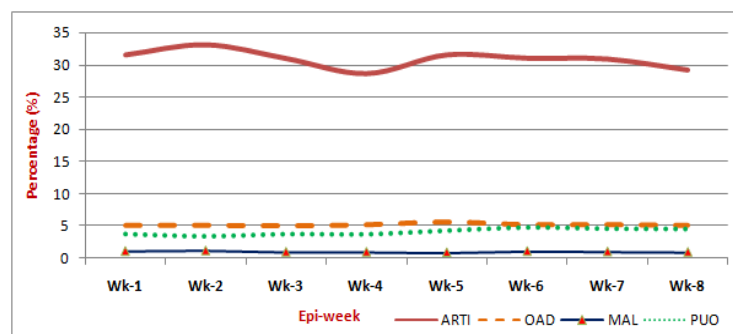
Since January 1, 2012, approximately **797,149** patient consultations have been reported to the eDEWS from Khyber Pukhtunkhwa province and Federal Administered Treaty Agency (FATA).

In this week 8, 2012 (19th February to 25th February, 2012) reports were received from 483 health centres and the major causes for seeking health care by the communities in almost all of the regions were diarrhoeal diseases 6,287 cases or 5%, acute respiratory infections 36,362 cases or 31%, skin diseases 3,338 cases or 2% and suspected malaria 1,159 cases or 1%.

Figure-3: Total number of HF# reported and consultations (Week no.1 to 8, 2012)



Figure-4: Leading communicable diseases percentage trend in Khyber Pakhtunkhwa/FATA (Week no.1 to 8, 2012)



Above figure 3 shows the number of health facilities and total number of consultations reported. Increasing in number of cases as compared to previous week show due to high number of OPD after rainy and snowfall in northern areas.

Figure 4 shows the weekly percentage trend of ARTI, Other Acute Diarrhoea, suspected Malaria and Pyrexia of Unknown Origin in Khyber Pakhtunkhwa/FATA from week 1 to 8, 2012.

Table-2: Respiratory Diseases situation in Khyber Pakhtunkhwa and FATA

Respiratory Diseases	Week-7	Week-8
Upper Respiratory Infection	32,184	33,320
Pneumonia <5	1,859	1,791
Pneumonia >5	1,341	1,251

Figure-5:

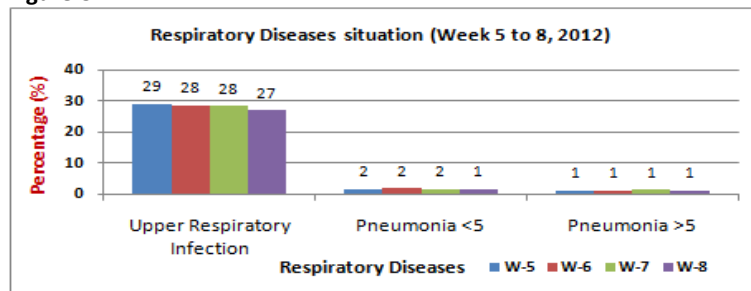


Table 2 shows the last two weeks Acute Respiratory Tract Infection (Upper Respiratory Tract Infection and Lower Respiratory Tract Infection (Pneumonia)) consultations comparison and figure 5 shows the last four weeks percentage situation of ARTI.

Table-3: Gastro Intestinal Diseases situation in Khyber Pakhtunkhwa and FATA

Gastro Intestinal Diseases	Week-7	Week-8
Bloody Diarrhea <5	358	349
Bloody Diarrhea >5	504	483
Other Acute Diarrhea <5	3,381	3,553
Other Acute Diarrhea >5	2,556	2,734
Typhoid Fever	208	290

Figure-6:

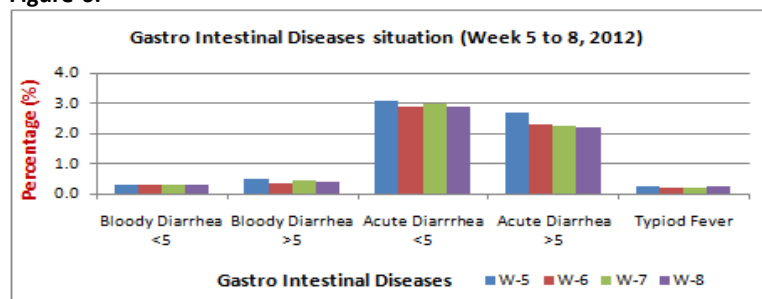


Table 3 shows the last two weeks cases of Gastro Intestinal Diseases and figure 6 shows the percentage of last four weeks.

Province Khyber Pakhtunkhwa:

Figure-7: Distribution of consultations by communicable diseases

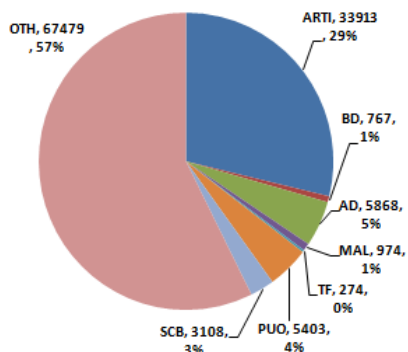
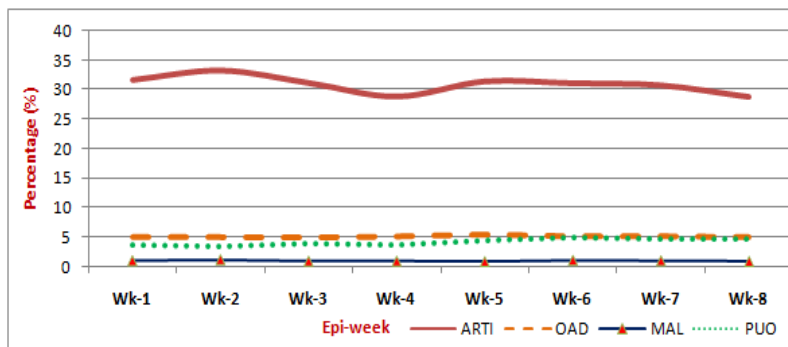
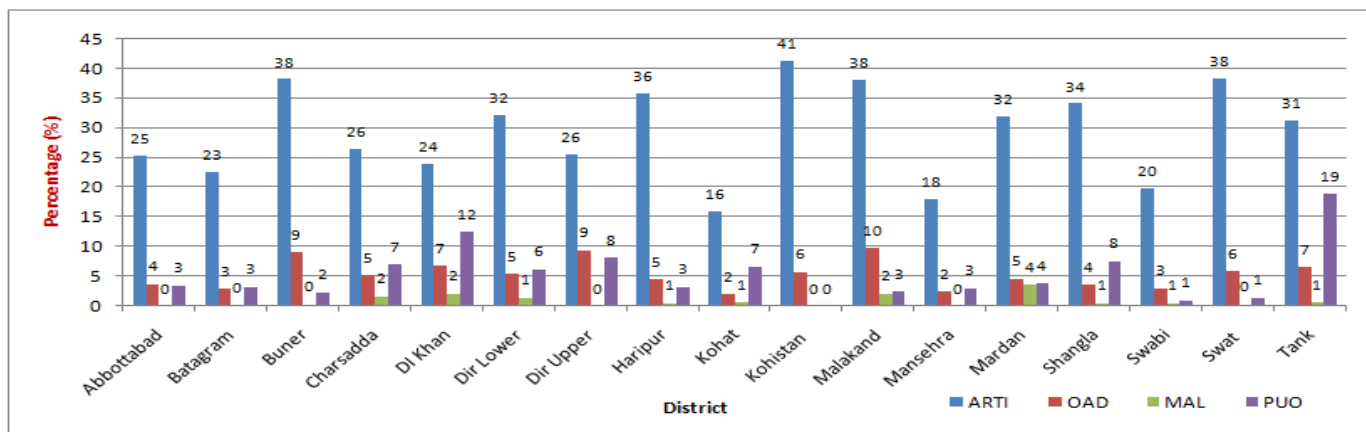


Figure-8: Weekly diseases (ARTI, OAD, MAL and PUO) percentage trend



- Figure 7 shows distribution of consultations by communicable diseases in week 8, 2012 and figure 8 shows weekly percentage trend of ARTI, OAD, MAL and PUO from week 1 to 8, 2012.
- This week 17 districts reported to eDEWS from 451 health facilities with a total of 117,786 patients' consultations.
- Acute Respiratory Tract Infection 33,913 cases reported were showing 2% decrease in percentage as compared to week 7 patients' visits and accounted for 29% of the total consultations.
- Other Acute Diarrhea cases 5,868 or 5% showing no change in percentage as compared to last two weeks and Suspected Malaria 974 cases or 1% were reported.
- While Pyrexia of Unknown Origin cases 5,403 or 5% showing no change in percentage as compared to last two weeks as compared to previous week 7.
- Typhoid Fever (TF) cases 198 (<1%) and Scabies cases 2,699 or 3% were reported.

Figure-9: ARTI, OAD, MAL and PUO percentage situation of Khyber Pakhtunkhwa district wise in week 8, 2012



The above figure shows ARTI, OAD, MAL and PUO percentage situation district wise in week 8, 2012. During this week high percentage of ARTI consultations were reported from district Kohistan 41% (1,228 cases), Swat 38% (5,946 cases), Buner 38% (2,040 cases), Malakand 38% (2,716 cases), Haripur 36% (3,836 cases) and Shangla 34% (1,288 cases). Similarly high percentage of OAD cases were reported from district Malakand 10% (691 cases), Dir Lower 9% (38 cases), Buner 9% (488 cases), D.I. Khan 7% (499 cases), Tank 7% (87 cases) and Swat 6% (922 cases). High percentages of suspected Malaria were reported from district Mardan 4% (63 cases) and D.I. Khan 2% (158 cases). High percentage of Pyrexia of Unknown Origin (PUO) consultations were reported from district Tank 19% (250 cases), D.I. Khan 13% (917 cases), Dir Upper 8% (33 cases) and Shangla 8% (287 cases).

Current week's Alert/Outbreak in Khyber Pakhtunkhwa:

A total of 69 alerts and 3 outbreaks (3 for suspected Measles) were reported in this week, 52 alerts for Suspected measles, 5 for AWD, 8 for cutaneous Leishmaniasis, 2 for Pertussis while 1 each for Bloody Diarrhoea and NNT.

❖ **2 suspected measles outbreaks from district Swabi...**

- 11 cases of suspected measles were reported from Private Clinic, Gani Kot Gabasni Swabi. Cases were investigated and responded in the presence of Health department personal. During investigation 9 cases found and 2 deaths recorded in the same locality. Vit.A given, health education sessions conducted, EDO-H and EPI coordinator Informed, Measles Mop up Vaccination done in the Relevant Village. WHO EHA and PPHI provided the essential medicines to the relevant Health Facilities.
- 7 suspected cases of Measles were reported from Private Clinic, Inayath Khel Swabi. Initially 1 case was investigated and responded in the presence of Health department personal. During investigation 6 more cases were found in the same locality. Vit.A given, health education sessions conducted, EDO-H and EPI coordinator Informed, Measles Mop up Vaccination Planned in the Relevant Village.

❖ **1 suspected measles outbreak from district Lower Dir...**

- 12 suspected measles were reported from Village Ashogai, UC Beshigram, Tehsil Lal Qilla Lower Dir. Initially one case was investigated and active surveillance conducted, hilly area with a total population of 35 houses, 11 more cases were found in the surrounding, routine outreach vaccination conducted in the area by EPI Team and vaccinated 49 children for routine immunization, Vit-A was given, Blood sample collected for confirmation of antibodies, Health education session conducted with the family members and community, patient isolated, EDO-H & EPI Coordinator were informe.

S. No.	Date Investigated	Suspected Disease	District	Location	<5 M	>5 M	<5 F	>5 F	Sample	Positive	Cases	Death
1	20-Feb-12	Measles	Abbottabad	Narian, Cant	0	0	1	0	1	r	1	0
2	23-Feb-12	Measles	Charsadda	Papra Kallay	1	0	0	0	1	r	1	0
3	23-Feb-12	Measles	Charsadda	Lagharya Kallay	1	0	0	0	1	r	1	0
4	23-Feb-12	Pertussis	Charsadda	Haseebabad	1	0	0	0	1	r	1	0
5	23-Feb-12	Leishmaniasis	Haripur	Afghan Refugee Turkman Camp	1	2	0	2	4	r	5	0
6	23-Feb-12	Measles	Haripur	Pind Ghakhr, Tofkian	2	0	0	0	0	r	2	0
7	24-Feb-12	Measles	Haripur	Ghazi city	0	1	0	0	0	r	1	0
8	23-Feb-12	Measles	Kohat	Village Muhmmad Zai, Union Council Muhammad Zai	1	0	0	0	2	r	1	0
9	22-Feb-12	AWD	Kohat	Union Council Bilitang	0	0	0	0	0	r	0	0
10	22-Feb-12	AWD	Kohat	Village Mir Ahmed Khel, Union Council Urban II	0	0	0	0	0	r	0	0
11	21-Feb-12	AWD	Kohat	Village khadder Khel, Union Council Mandoori	0	0	0	0	0	r	0	0
12	21-Feb-12	AWD	Kohat	Village Gabbari, Union Council Shakardarra Rural II	0	0	0	0	0	r	0	0
13	21-Feb-12	BD	Kohat	Union Council Shakardarra Urban	0	0	0	0	0	r	0	0

14	20-Feb-12	AWD	Kohat	Village Kachai, Union Council Usterzai	0	0	0	0	0	r	0	0
15	21-Feb-12	Measles	Lower Dir	Village Gardai	1	0	0	0	1	r	1	0
16	22-Feb-12	Measles	Lower Dir	Village Ashogai, UC Beshigram, Tehsil Lal Qilla	1	2	2	7	1	r	12	0
17	23-Feb-12	Measles	Lower Dir	Village hayathy, sarkadaro, Tehsil Uthmankhail	1	0	0	0	1	r	1	0
18	23-Feb-12	Measles	Lower Dir	Village Baron, UC Munjai, Tehsil Balmbat	1	0	0	0	1	r	1	0
29	23-Feb-12	Measles	Lower Dir	Village Darrora, Changal Bazar, Mohalla Wandd	0	0	1	0	1	r	1	0
20	24-Feb-12	Measles	Lower Dir	Village Tabu-Sherkhany, UC Hayaserae, Tehsil Balmbat	1	0	2	0	1	r	3	0
21	25-Feb-12	Pertussis	Lower Dir	Village Kolalano Cham, Asbanrd Bazar, UC Asbanrd, Tehsil Adenzai	1	0	1	0	1	r	2	0
22	22-Feb-12	Measles	Mansehra	Village Malkana UC Shungli Bandi Tehsil Oghi	2	1	3	0	2	r	6	0
23	19-Feb-12	Measles	Shangla	Village Dur Banai	0	2	0	0	2	r	2	0
24	19-Feb-12	Measles	Shangla	Village Ban Dheray	1	0	0	0	1	r	1	0
25	23-Feb-12	Measles	Shangla	Village Ban Khwargai/UC Dherai	1	0	0	0	1	r	1	0
26	21-Feb-12	Measles	Swabi	Private Clinic, Gani Kot Gabasni	1	2	5	3	3	r	9	2
27	23-Feb-12	Measles	Swabi	Private Clinic, Inayath Khel	3	1	2	1	1	r	7	0
28	24-Feb-12	Measles	Swabi	BHU Zaida, Gaar Side	1	0	1	1	1	r	3	0
29	24-Feb-12	Measles	Swabi	CD Hemlet, Gala	0	0	1	0	1	r	1	0
30	20-Feb-12	Measles	D. I. Khan	Paroa	1	0	0	0	1	r	1	0
31	20-Feb-12	Measles	D. I. Khan	Kot Zafar, Kulachi	1	0	0	0	1	r	1	0
32	20-Feb-12	Measles	D. I. Khan	Kot Zafar, Kulachi	0	0	1	0	1	r	1	0
33	21-Feb-12	Measles	D. I. Khan	Jogi Dara Pezu	1	0	0	0	1	r	1	0
34	21-Feb-12	Measles	D. I. Khan	Wacha Khora, Wana	1	0	0	0	1	r	1	0
35	22-Feb-12	NNT	D. I. Khan	Maleekhi, Tehsil Paroa	0	0	1	0	1	r	1	0
36	24-Feb-12	Measles	D. I. Khan	Daman Hotel, Darya Khan Road	0	0	0	1	1	r	1	0
37	24-Feb-12	Measles	D. I. Khan	Ramak, Paroa Road	0	1	0	0	1	r	1	0
38	24-Feb-12	Leishmaniasis	D. I. Khan	Makeen, SWA (Shifted to Datta Khail, Miran Shah, NWA) Currently in Khairabad Colony, Eid Gah Road	0	0	1	2	0	r	3	0
39	20-Feb-12	Measles	Nowshera	Mohallah Gharay, Near Rambail Kababi, Union Council: Tarru Jabba	1	0	0	0	1	r	1	0

40	20-Feb-12	Measles	Nowshera	Akhood Abad, Near Fazal ur Rahman Lewaar House, Union Council: Tarru Jabba	0	1	0	0	1	r	1	0
41	21-Feb-12	Measles	Nowshera	Mohallah: Mayaro Khel, Rashakai Bazar, Near Dr Fazli Khaliq Clinic, Union Council: Rashakai	5	0	1	0	1	r	6	0
42	21-Feb-12	Measles	Nowshera	Khat Kalay, Mohallah: Kashmiryaan, Union Council: Ghaladher	2	0	2	0	1	r	4	0
43	22-Feb-12	Measles	Nowshera	Mohallah: Mardankhel, Near: Khweshgi Model School, Union Council: Khweshgi Bala	4	0	6	0	1	r	10	0
44	23-Feb-12	Measles	Nowshera	Mohallah: Akhood Baba, Near: RHC, Akbarpura, Union Council: Akbarpura	0	0	0	1	1	r	1	0
45	24-Feb-12	Measles	Nowshera	Afrido Kalay, Malang Pul, Near: Hira School, Union Council: Bahram Kalay	1	0	2	1	1	r	4	0
46	25-Feb-12	Leishmaniasis	Nowshera	Phase: 06, Sector: H, Tent: 21, Jalozaï IDP's Camp	0	0	0	2	2	r	2	0
47	23-Feb-12	Leishmaniasis	Nowshera	Amir Zada House, Old Inzari Road, Union Council: Nizampur	0	0	1	0	1	r	1	0
48	21-Feb-12	Leishmaniasis	Nowshera	Mohallah: Wara Khel, Union Council: Sheikhee	0	0	0	2	2	r	2	0
49	20-Feb-12	Leishmaniasis	Nowshera	Village: Manai	0	1	0	0	1	r	1	0
50	20-Feb-12	Leishmaniasis	Nowshera	Village: Natal, Union Council: Akbarpura	0	1	0	0	1	r	1	0
51	20-Feb-12	Measles	Swat	Village Zawra Barthana, UC Barthana, Tehsil Matta,	1	0	0	0	1	r	1	0
52	20-Feb-12	Measles	Swat	Village Kohistan Gat, UC Saidu Sharif, Tehsil Babuzai	1	0	0	0	1	r	1	0
53	21-Feb-12	Measles	Swat	Village and UC Kalakaley, Tehsil Kabal	0	1	0	0	1	r	1	0
54	21-Feb-12	Measles	Swat	Village Spiney Obe Malam Jabba Road, UC Kishawara, Tehsil Charbagh	0	0	1	0	1	r	1	0
55	22-Feb-12	Measles	Swat	Village Terang mian bara lar, UC Shamozaï, Tehsil Barikot	0	0	1	0	1	r	1	0
56	22-Feb-12	Measles	Swat	Village Parona, UC Jambe kokarai, Tehsil Babuzai	0	0	1	0	1	r	1	0
57	22-Feb-12	Measles	Swat	Village and UC Shamozaï Chungai Hazar Mohallah, Tehsil Barikot	0	0	0	1	1	r	1	0
58	21-Feb-12	Measles	Nowshera	Khatako Mohalla Village Aman Garh Nowshera 0345-9304743	1	0	0	0	1	r	1	0
59	23-Feb-12	Measles	Nowshera	Village Misri Banda	0	0	0	2	2	r	2	0
60	21-Feb-12	Measles	Nowshera	Village Khaishki Bala	1	0	1	0	2	r	2	0
61	23-Feb-12	Measles	Nowshera	Village Khaishki Bala	1	0	0	0	1	r	1	0
62	23-Feb-12	Measles	Nowshera	Village Aman Garh	1	0	0	0	1	r	1	0
63	23-Feb-12	Measles	Peshawar	Village Jhagra	1	0	0	0	1	r	1	0
64	23-Feb-12	Measles	Peshawar	Village Latifabad	0	0	1	0	1	r	1	0
65	23-Feb-12	Measles	Buner	shangra pass pandair tehsil chagharzai	1	1	2	2	6	r	6	0

66	21-Feb-12	Measles	Tank	Waranna	1	0	0	0	1	r	1	0
67	21-Feb-12	Measles	Tank	AliKhel	1	0	0	0	1	r	1	0
68	24-Feb-12	Leishmaniasis	Tank	Mulazai	0	1	0	0	0	r	1	0
69	24-Feb-12	Measles	Battagram	Village Maidan Bala, UC Ajmaira	0	0	0	1	1	r	1	0

Federal Administrated Tribal Agency (FATA):

Figure-10: Two years trend of ARTI in FATA

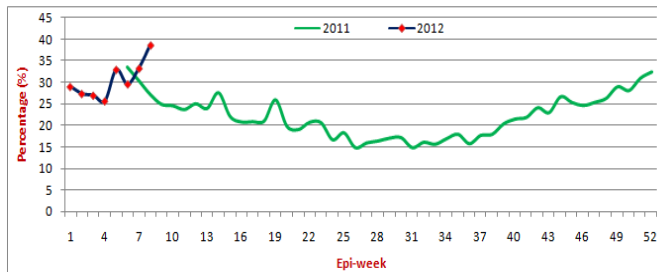
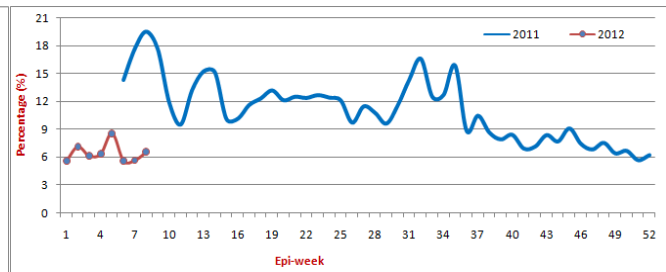


Figure-11: Two years trend of Other Acute Diarrhea in FATA



DEWS was started in FATA three agencies (Bajaur, Khyber, Mohmand) since February, 2011 during FATA IDPs crisis. Figure 10 shows 2 years weekly percentage trend of Acute Respiratory Tract Infection (ARTI) percentage trend. In week 8, 2012 ARTI 2,449 cases or 39% were reported showing 6% increase as compared to previous week . Figure 11 shows the 2 years weekly percentage trend of Other Acute Diarrhea. In week 8, 2012 OAD 419 cases or 7% were shared and showing 1% increase in percentage as compared to previous week.

Figure-12: Distribution of consultations by communicable diseases

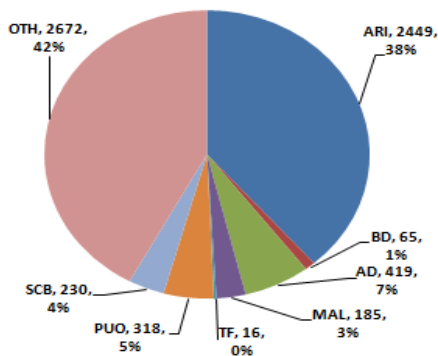
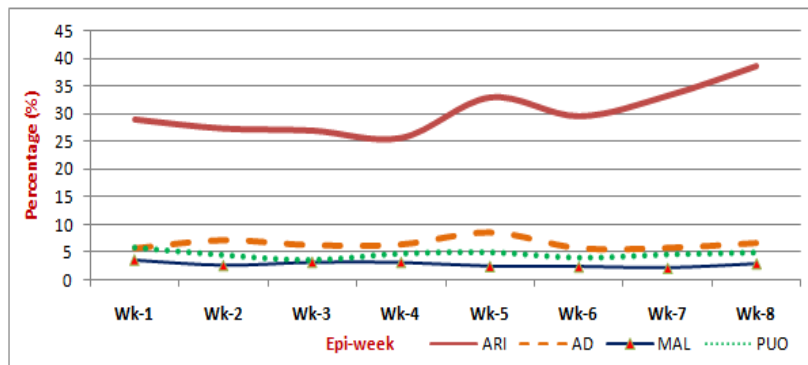
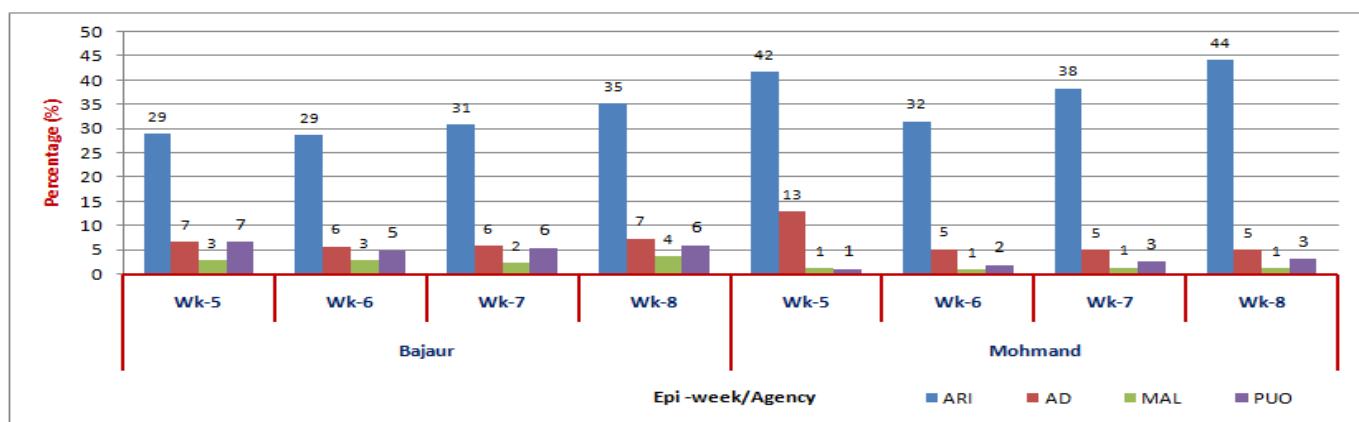


Figure-13: Weekly diseases (ARTI, OAD, MAL and PUO) percentage trend



- Figure 12 shows distribution of consultations by communicable diseases in week 8, 2012 and figure 13 shows weekly percentage trend of ARTI, OAD, MAL and PUO from week 1 to 8, 2012.
- This week, 32 health facilities reported from 2 agencies to eDEWS with a total of 6,354 patients' consultations.
- Acute Respiratory Tract Infection (ARTI) 2,449 cases reported were showing increase in percentage since week 6 patients' visits and accounted for 39% of the total consultations.
- Other Acute Diarrhea (OAD) 419 cases or 7% were showing 1% increase in percentage as compared to week 7 and Suspected Malaria (Mal) 185 cases or 3% were shared.
- While Pyrexia of Unknown Origin (PUO) shared 318 cases or 5% which shows no change in percentage as compared to last week , Typhoid Fever (TF) 16 cases or <1% and Scabies 230 cases or 4% were reported.

Figure-14: ARTI,OAD, MAL and PUO percentage situation of Federal Administered Treaty Agency (FATA) in last four weeks

The above figure 12 shows ARTI, OAD, MAL and PUO percentage situation in FATA two agencies. During week 8, 2012 high percentage of ARTI consultations were reported as compared to other diseases. Since last two weeks high percentage of ARTI consultations were reported from Mohmand agency. In this week 44% or 995 cases and 35% or 1,454 cases were shared respectively from Mohmand and Bajaur Agency. Similarly Other Acute Diarrhoea, suspected Malaria and Pyrexia Unknown Origin (PUO) high percentage were reported 7% or 305 cases, 4% or 155 cases and 6% or 247 cases respectively from Bajaur agency.

Current week's Alert/Outbreak in FATA:

A total of 4 alerts were reported in this week, 2 alerts each for Suspected measles and NNT.

S. No.	Date Investigated	Suspected Disease	Agency	Location	<5 M	>5 M	<5 F	>5 F	Sample	Positive	Cases	Death
1	21-Feb-12	Measles	Bajaur Agency	village Talay of Tehsil Salarzai	1	1	2	1	2	r	5	0
2	24-Feb-12	NNT	Bajaur Agency	village Dag Kotkai of Tehsil Khar	1	0	0	0	0	r	1	0
3	24-Feb-12	NNT	Bajaur Agency	village shamozai-Tarai of Tehsil Salarzai	1	0	0	0	0	r	1	0
4	21-Feb-12	Measles	Khyber Agency	Village Wali Abad Jaan Khan kalay Bara	0	1	0	0	1	r	1	0

Figure-15: Total number of alerts/outbreak situation in Khyber Pakhtunkhwa & FATA through eDEWS System (Week 8, 2012)

