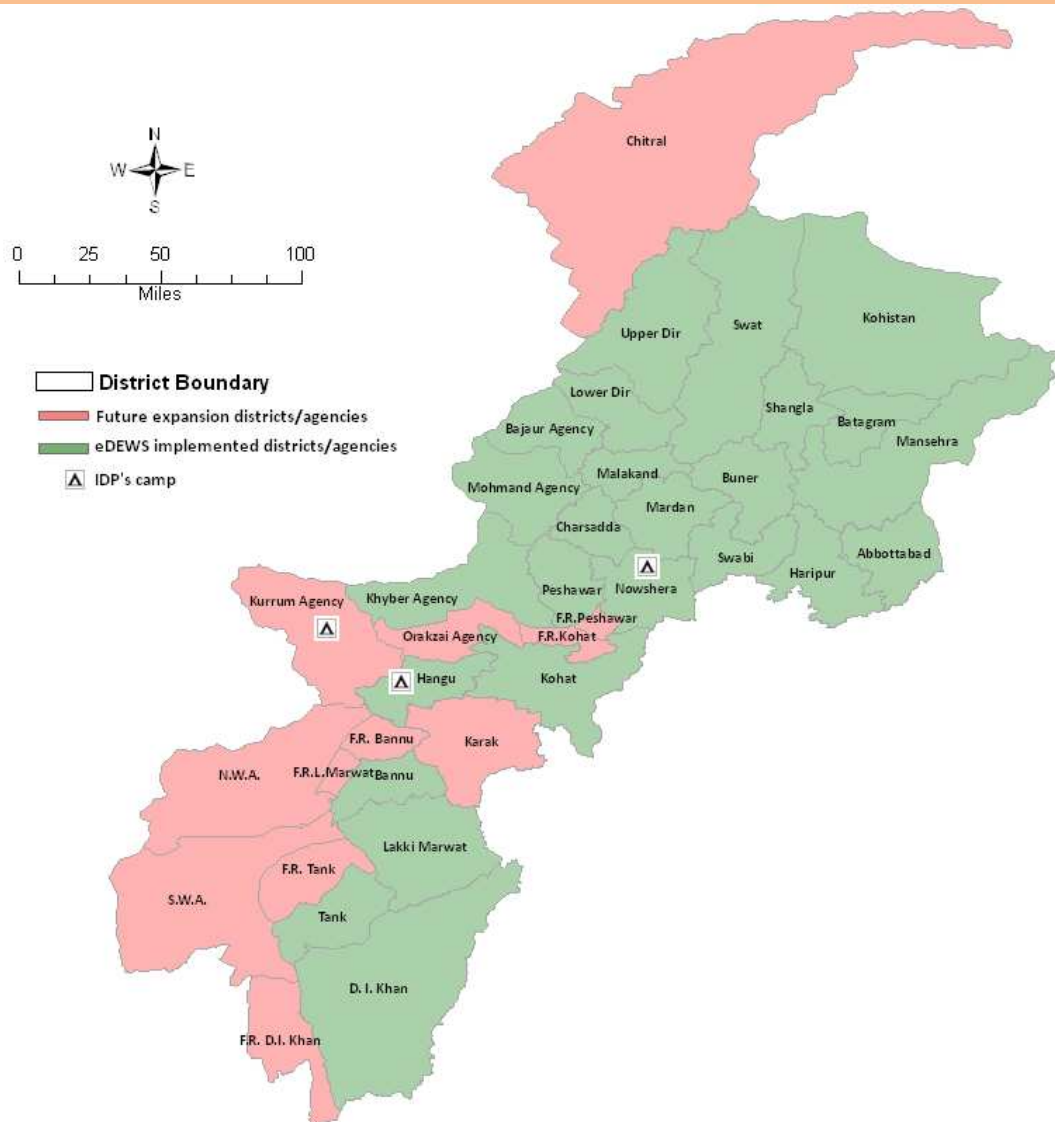


Weekly Epidemiological Bulletin

Electronic Disease Early Warning System & Response (eDEWS)

in Khyber Pakhtunkhwa and FATA

Epidemiological Week no. 39 (September 23 to 29, 2012)



Priority diseases under surveillance in eDEWS

Respiratory Diseases

Acute (upper) respiratory infections

Pneumonia <5 years

Pneumonia > 5 years

Suspected Diphtheria

Suspected Pertussis

Gastro Intestinal Diseases

Acute Watery Diarrhea <5 year

Acute Watery Diarrhea > 5 year

Bloody Diarrhea <5 years

Bloody Diarrhea > 5 years

Other Acute Diarrhea < 5 years

Other Acute Diarrhea > 5 years

Suspected Enteric/Typhoid Fever

Other Communicable

Suspected Malaria

Suspected Meningitis

Suspected Dengue Fever

Suspected Viral Hemorrhagic Fever

Pyrexia Of Unknown Origin

Vaccine Preventable

Suspected Measles

Suspected Acute Viral Hepatitis

Chronic Viral Hepatitis

Neonatal Tetanus

Acute Flaccid Paralysis

Skin Disease

Scabies

Cutaneous Leishmaniasis

Injuries /Poisoning

Injuries

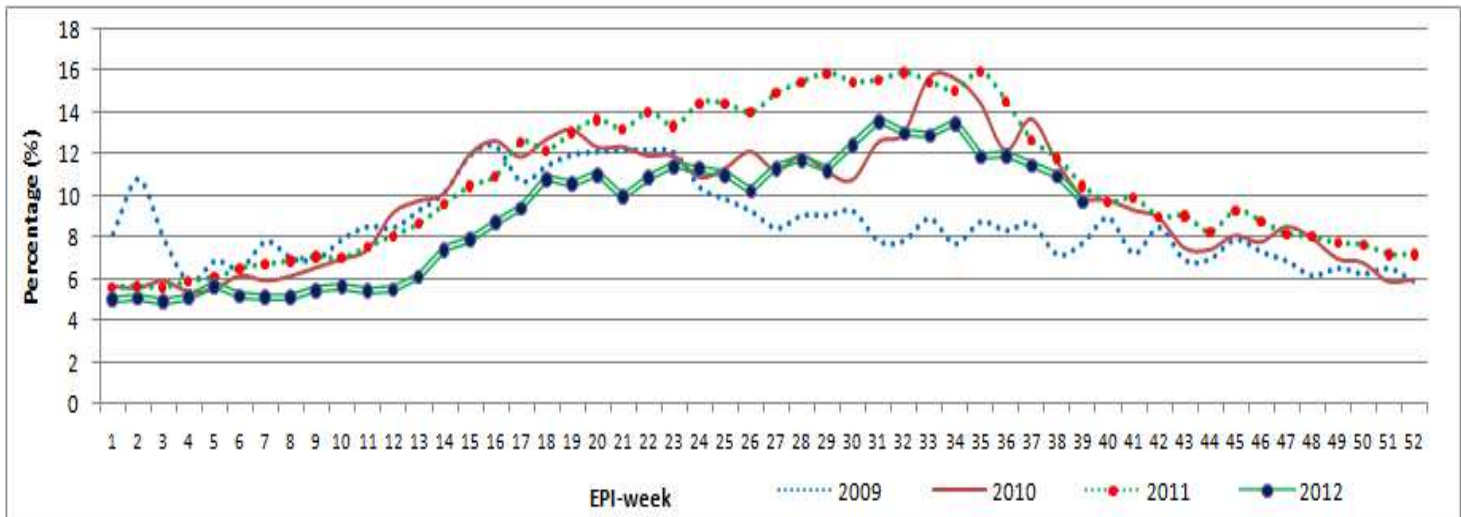
Snake bite

Other unusual diseases

Other unusual diseases

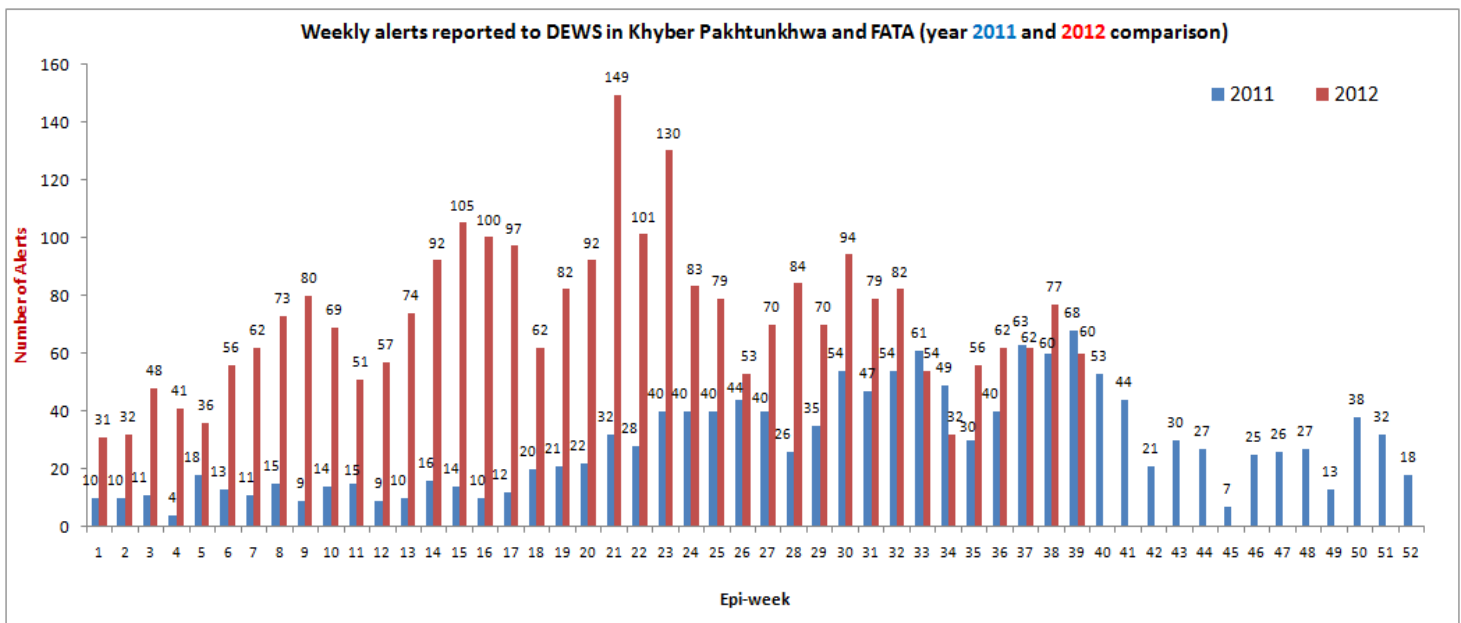
HIGHLIGHTS

- **17 districts and 3 agencies** provided surveillance data to the eDEWS this week from **477** health facilities.
- A total of **146,486 consultations** were reported through eDEWS of which 19% or 27,399 cases were Acute Upper Respiratory Infection, is still the highest cause of morbidity of total consultations were showing 1.6% increase in percentage as compared to week 38.
- Other Acute Diarrhoea shared 10% or 14,232 cases of the total consultations showing 1.2% decrease in percentage as compared to previous week.
- Pyrexia of Unknown Origin accounted for 5.4% or 7,897 cases out of total consultations.
- Skin Infection (Skin Inf.) reported at 2.5% or 3,591 cases and suspected Typhoid Fever comprised only 0.4% or 563 cases out of total consultations.
- A total of **60 alerts** including **3 outbreaks** (1 each for Acute Watery Diarrhea (AWD), Dengue Fever (DF) and Cutaneous Leishmaniasis (CL)) were received. 43 alerts for suspected Measles, 8 for AWD, 2 each for DF and Neonatal Tetanus (NNT) while 1 each for Diphtheria, CL, Pertussis, suspected Typhoid and Viral Haemorrhagic Fever (VHF) were shared and responded.

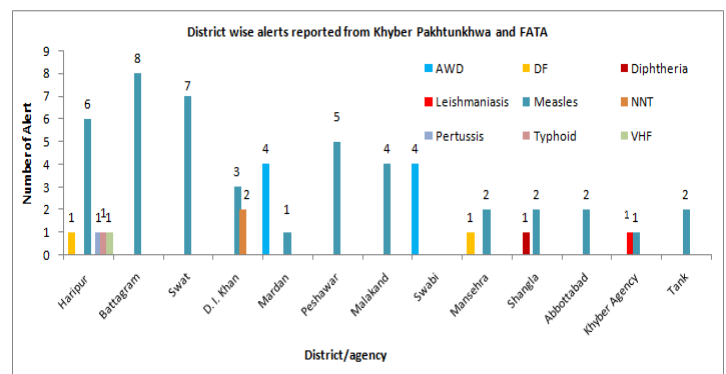
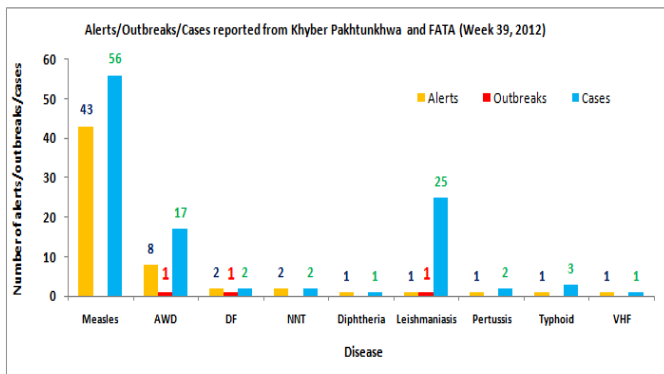
Compiled situation in Khyber Pakhtunkhwa & FATA**Figure-1: Four years trend of Other Acute Diarrhea (OAD) in Khyber Pakhtunkhwa/FATA (2009, 2010, 2011 and 2012)**

The above graph shows the trend of Other Acute Diarrhoea (OAD) cases out of total consultations reported to DEWS in 2009, 2010, 2011 and 2012 up until now. In this week 39, 2012 OAD consultations reported 11% or 14,232 cases of total cases and show 1.2% decrease in percentage as compared to week 38.

During this week high percentage of OAD consultations were reported from district Peshawar 17% followed by district Mohmand 14%, Malakand 13%, Shangla 12%, Dir Lower 12%, Hangu 11%, Tank 11%, Swat 11%, D.I. Khan 11% and Buner 10% and Bajaur 10%.

Figure-2: Alerts reported in Khyber Pakhtunkhwa/FATA (year 2011 and 2012 comparison)

The above graph shows the different reported alerts to DEWS from year 2011 and 2012. High number of alerts reported in year 2012 due to more active surveillance and response. A cumulative figure for the current year is **2,822 alerts (6,728 cases)** including of **225 outbreaks** were reported. Measles alerts are leading in Khyber Pakhtunkhwa and FATA with **2,102 alerts (3,614 cases)** including **136 outbreaks**. Followed by *C. Leishmaniasis* **295 alerts (1,037 cases)** including **32 outbreaks**, Neonatal Tetanus **113 alerts (115 cases)**, AWD **103 alerts (800 cases)** including **15 outbreaks**, Typhoid Fever **44 alerts (153 cases)** including **12 outbreaks**, Diphtheria **24 alerts (24 cases)** including **1 outbreak**, Bloody diarrhoea **23 alerts (136 cases)** including **5 outbreaks**, Dengue Fever **19 alerts (19 cases)** including **2 outbreak**, Acute Viral Hepatitis **17 alerts (195 cases)** including **8 outbreaks**, Pertussis **17 alerts (37 cases)** including **2 outbreaks**, suspected AFP **12 alerts (12 cases)**, Dog Bite **9 alerts (9 cases)**, Scabies **7 alerts (320 cases)** including **5 outbreaks**, H1N1 **7 alerts (20 cases)** including **2 outbreaks**, Falciparum Malaria **5 alerts (9 cases)** including **2 outbreaks**, CCHF **5 alerts (5 cases)** including **1 outbreak**, Tetanus **5 alerts (5 cases)**, Other Acute Diarrhoea **4 alerts (194 cases)** including **1 outbreak**, Chickenpox **3 alerts (8 cases)**, Viral Hemorrhagic Fever **2 alerts (2 cases)**, Dengue Hemorrhagic Fever **1 alert (4 cases)**, Rabies **1 alerts (9 cases)** including **1 outbreak**, Mumps **1 alert (2 cases)**, suspected DHF/CCHF **1 alert (1 case)**, Unexplained Fever **1 alert (1 case)**, Viral Hemorrhagic Fever **1 alert (1 case)** and Viral Encephalitis **1 alert (1 case)** were shared.

Figure-3: Number of alerts and alert cases reported in Khyber Pakhtunkhwa/FATA (Week 39, 2012)

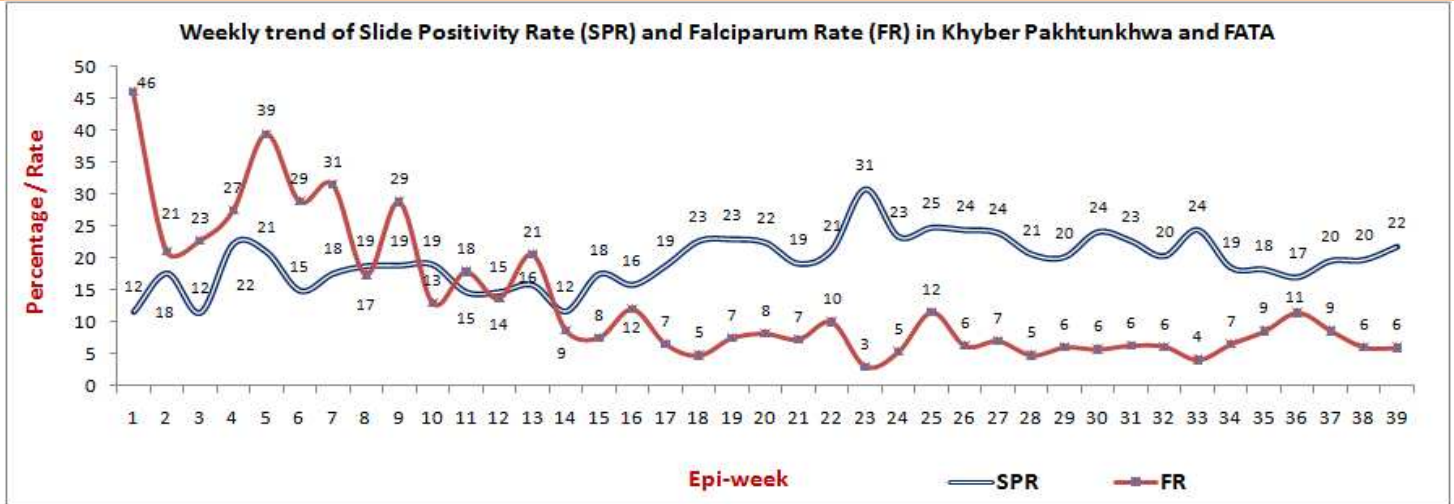
The above left side graph shows different alerts and their cases reported in KP/FATA and right side graph shows different alerts shared by district wise in week 39, 2012. In this week a total of **60 alerts (109 cases)** including **3 outbreaks** were reported and responded.

- Highest number of alerts reported from Haripur 10 alerts including 6 for suspected Measles while 1 each for DF, Pertussis, suspected Typhoid and VHF followed by
- Battagram 8 for suspected Measles
- Swat 7 for suspected Measles
- D.I. Khan 5 alerts including 3 for suspected Measles and 2 for NNT
- Mardan 5 alerts including 4 for AWD and 1 for suspected Measles
- Peshawar 5 for suspected Measles
- Malakand 4 for suspected Measles
- Swabi 4 for AWD
- Mansehra 3 alerts including 2 for suspected Measles and 1 for DF
- Shangla 3 alerts including 2 for suspected Measles and for Diphtheria
- Abbottabad 2 for suspected Measles
- Tank 2 for suspected Measles
- Khyber 2 alerts including 1 each for CL and suspected Measles

❖ **3 outbreaks (AWD 1, CL 1 and Dengue Fever 1) were reported in this week.**

- ✓ 1 AWD outbreak was shared from district Mardan
 - A suspected AWD alert was reported from ER Unit of DHQ Hospital Mardan, after investigation of suspected cases at hospital, Epidemiological and Environmental assessment was carried out in the area. 7 cases were identified who had developed diarrhea in past week in the community. 4 cases were with some dehydration and received medication from hospital and local practitioners. Field investigation found possible source as contaminated water supply. Stool sample was taken and sent to NIH. Water samples from source and end users were taken and tested for contamination. 3/3 water samples are contaminated. Health and hygiene sessions were conducted for affected families. Aqua tabs, soaps, hygiene kits and ORS distributed in the community. EDO health informed about the outbreak.
- ✓ 1 Dengue Fever outbreak was shared from district Haripur
 - Suspected case with 128,000 platelets and with clinical sign and symptoms suggestive of DF reported by LHW from village Julian admitted in hospital. No travel history. Blood sample was sent and came back positive for IgM Dengue. Attending physician was provided with hospital case management guidelines. No more cases found on active case finding. Awareness was raised in the community regarding mosquito control and early referral of hemorrhagic cases to the DHQ. Spraying and larviciding and IRS were carried out in the 100 meters radius around the patient's house. Bed nets provided for the family. EDO health informed about the case.
- ✓ 1 CL outbreak was shared from district Khyber
 - The Leishmaniasis cases were reported by Medical Technician from BHU Janbaz killi. A total of 25 cases were detected from the affected area. The line list was maintained. Health education was imparted. 24 vials of Injection Glucantime were provided for the treatment of patients.

Figure-4: Weekly trend of SPR and FR in Khyber Pakhtunkhwa and FATA (From January 1st to September 29th, 2012):-



A cumulative figure of RDT examined for the current year is 92,738 slides including 19,064 slides positive i.e. 21% accounted for Slide Positivity Rate (SPR). Out of total positive, Falciparum Rate (FR) was accounted 9.1% (1,744 slides). Similarly Vivax 91% (17,320 slides) and Mixed 3.1% (600 slides) were reported.

For the current week total 2,718 slides were tested for Malaria. Out of which SPR is accounted 22% (592 slides) including FR 6% (35 slides), Vivax 94% (557 slides) and Mixed 0.5% (3 slides).

Table-1: Leading causes of seeking health care in flood affected districts, compiled weekly reports

| Disease name | Week-36 | Week-37 | Week-38 | Week-39 | Total Consultations (1 st Jan to 29 th Sep, 2012) |
|-----------------------------|----------------|----------------|----------------|----------------|---|
| Acute Diarrhoea | 15,984 (12%) | 16,508 (11.5%) | 16,062 (11%) | 14,232 (10%) | 498,296 (9.3%) |
| Bloody Diarrhoea | 894 (1%) | 1,013 (1%) | 1,041 (1%) | 995 (1%) | 40,518 (1%) |
| Suspected Malaria | 3,387 (2.5%) | 3,642 (2.5%) | 3,613 (2.5%) | 3,695 (2.5%) | 107,170 (2%) |
| Skin Diseases | 3,773 (3%) | 4,113 (3%) | 3,697 (2.5%) | 3,591 (2.5%) | 144,325 (3%) |
| Pyrexia of Unknown Origin | 7,769 (6%) | 7,885 (5.5%) | 8,324 (6%) | 7,897 (5.4%) | 270,462 (5%) |
| Acute Respiratory Infection | 21,300 (16%) | 22,793 (16%) | 25,085 (17.1%) | 27,399 (19%) | 1,101,084 (21%) |
| Total Consultations | 133,918 | 143,940 | 146,617 | 146,486 | 5,352,042 |

The above table shows compiled communicable diseases cases from weekly reports and proportional morbidity through eDEWS reported. Since January 1, 2012, approximately 5,352,042 patient consultations have been reported to the eDEWS from Khyber Pukhtunkhwa province and Federal Administered Tribal Areas (FATA).

In this week 39, 2012 (September 23 to 29, 2012) reports were received from 477 health centres and the major causes for seeking health care by the communities in almost all of the regions were diarrhoeal diseases 14,232 cases or 10%, acute respiratory infections 27,399 cases or 19%, skin diseases 3,591 cases or 2.5% and suspected malaria 3,695 cases or 2.5%.

Figure-5: Total number of HFs reported and consultations (Week no.1 to 39, 2012)

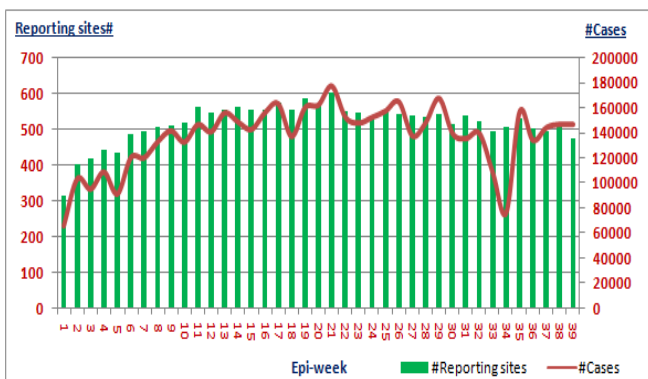


Figure-6: Leading communicable diseases percentage trend in Khyber Pakhtunkhwa and FATA (Week no.1 to 39, 2012)

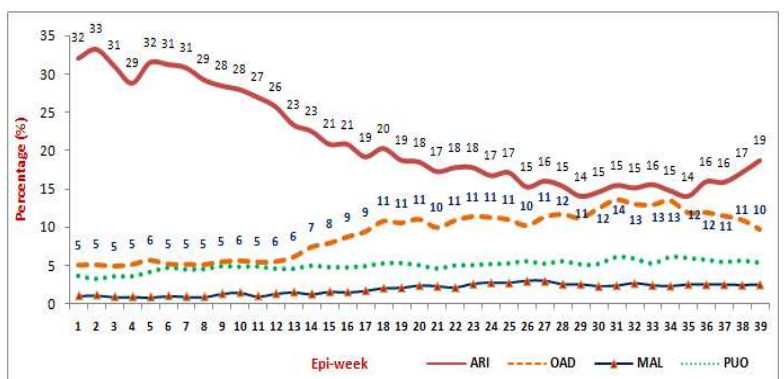


Figure 4 shows the number of health facilities and total number of consultations reported. Figure 5 shows the weekly percentage trend of ARI, Other Acute Diarrhoea, suspected Malaria and Pyrexia of Unknown Origin in Khyber Pakhtunkhwa and FATA from week 1 to 39, 2012. ARI percentage is showing little increase since week 36 due to seasonal disease and OAD showing 1.2% decrease in percentage in week 39 as compared to previous week.

Table-2: Respiratory Diseases situation in Khyber Pakhtunkhwa and FATA

| Respiratory Diseases | Week-38 | Week-39 |
|-----------------------------|---------|---------|
| Upper Respiratory Infection | 24,220 | 26,292 |
| Pneumonia <5 | 490 | 574 |
| Pneumonia >5 | 375 | 533 |

Table 2 shows the last two weeks Acute Respiratory Tract Infection (Upper Respiratory Tract Infection and Lower Respiratory Tract Infection (Pneumonia)) consultations comparison and figure 5 shows the last four weeks percentage situation of ARI.

Table-3: Gastro Intestinal Diseases situation in Khyber Pakhtunkhwa and FATA

| Gastro Intestinal Diseases | Week-38 | Week-39 |
|----------------------------|---------|---------|
| Bloody Diarrhea <5 | 438 | 400 |
| Bloody Diarrhea >5 | 603 | 595 |
| Other Acute Diarrhea <5 | 8,464 | 7,512 |
| Other Acute Diarrhea >5 | 7,598 | 6,720 |
| Suspected Typhoid Fever | 458 | 563 |

Table 3 shows the last two weeks cases of Gastro Intestinal Diseases and figure 6 shows the Gastro Intestinal Diseases percentage of last four weeks.

Figure-7:

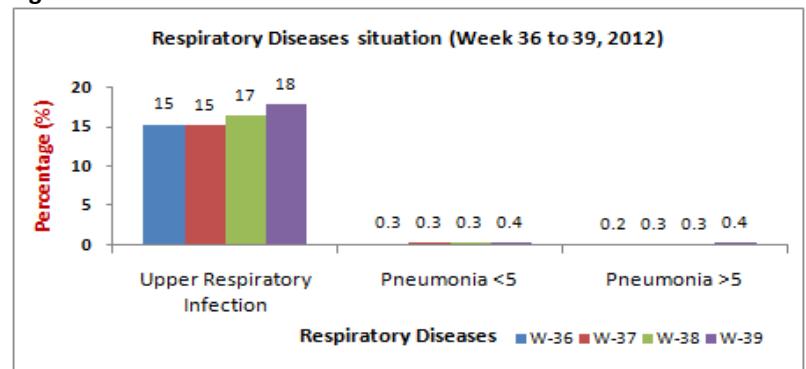
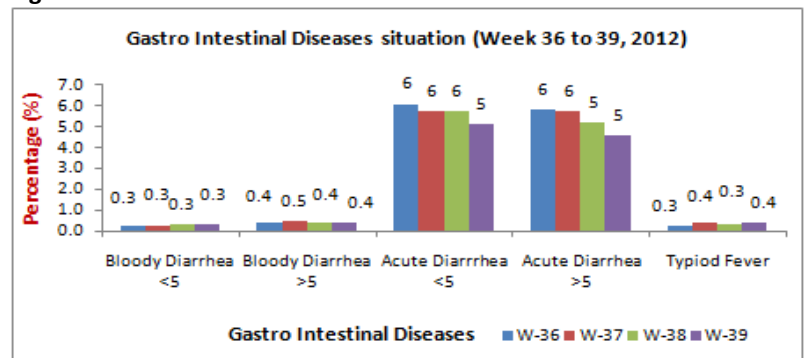


Figure-8:



Province Khyber Pakhtunkhwa:

Figure-9: Percentage of consultations by gender and age wise

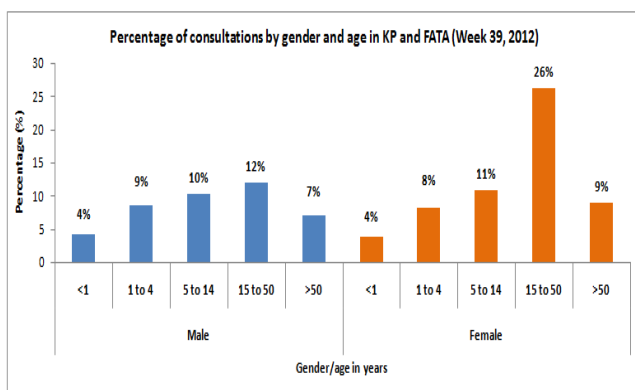
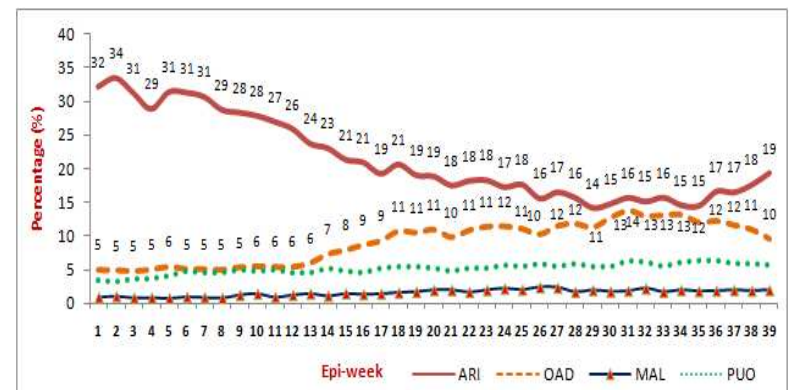


Figure-10: Weekly diseases (ARI, OAD, MAL and PUO) percentage trend

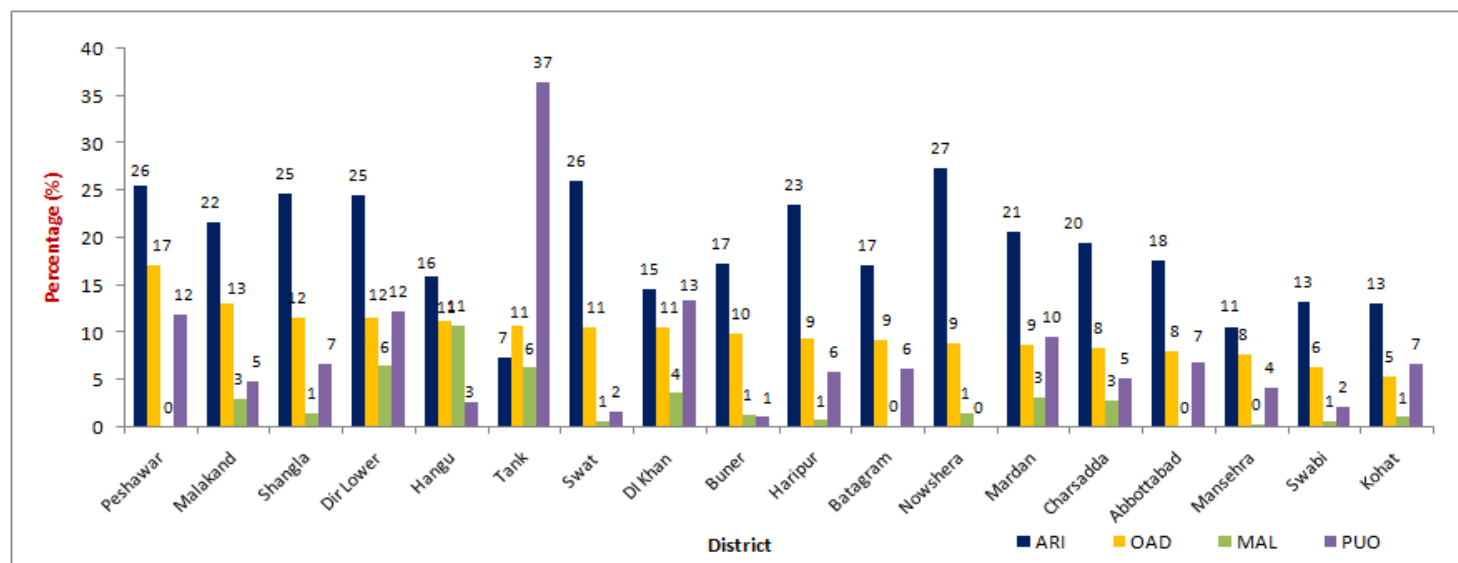


- Figure 8 shows percentage of consultations by gender and age wise in health events in over all diseases, male to female patients' ratio reported was **42%** or **55,278** cases and **58%** or **76,162** cases respectively.
- Figure 9 shows weekly percentage trend of ARI, OAD, MAL and PUO from week 1 to 39, 2012.
- This week 17 districts reported to eDEWS from 430 health facilities with a total of **131,440** patients' consultations.
- Acute Respiratory Tract Infection 25,580 cases reported were showing 2% increase in percentage as compared to

week 38 patients' visits and accounted for 19.5% of the total consultations.

- Other Acute Diarrhea cases 12,703 or 10% showing 1.4% decrease in percentage as compared to previous week and suspected Malaria 2,575 cases or 2% were reported.
- Pyrexia of Unknown Origin cases were shared 7,509 or 6%.
- Suspected Typhoid Fever (TF) cases 500 or 0.4% and Scabies cases 3,267 or 2.5% were reported.

Figure-11: ARI, OAD, MAL and PUO percentage situation of Khyber Pakhtunkhwa district wise in week 39, 2012



The above figure shows ARI, OAD, MAL and PUO percentage situation district wise in week 39, 2012. During this week high percentage of OAD consultations were reported from district Peshawar 17% (354 cases) followed by district Malakand 13% (1,114 cases), Shangla 12% (522 cases), Dir Lower 12% (634 cases), Hangu 11% (536 cases), Tank 11% (90 cases), Swat 11% (1,959 cases), D.I. Khan 11% (1,940 cases) and Buner 10% (651 cases). Similarly high percentage of ARI cases were reported from district Nowshera 27% (931 cases), Swat 26% (4,801 cases), Peshawar 26% (528 cases), Shangla 25% (1,104 cases), Dir Lower 25% (1,337 cases), Haripur 23% (2,796 cases), Malakand 22% (1,847 cases), Mardan 21% (1,734 cases) and Charsadda 20% (2,352 cases). High percentages of suspected Malaria were reported from district Hangu 11% (507 cases), Dir Lower 6% (351 cases), Tank 6% (52 cases) and D.I. Khan 4% (316 cases). High percentage of Pyrexia of Unknown Origin (PUO) consultations were reported from district Tank 37% (304 cases), D.I. Khan 13% (1,197 cases), Dir Lower 12% (672 cases), Peshawar 12% (245 cases), Mardan 10% (802 cases) and Abottabad 7% (732 cases).

Table-4: Malaria Slides/RDT examination report of Khyber Pakhtunkhwa district wise in week 39, 2012

| District | Slides / RDT examined | P. Falciparum | P. Vivax | P. Mixed | Total +Ve | Slide Positivity Rate (SPR) | Falciparum Rate (FR) | Vivax Rate | Mixed Rate |
|--------------|-----------------------|---------------|------------|----------|------------|-----------------------------|----------------------|-------------|------------|
| Charsadda | 116 | 1 | 30 | 0 | 31 | 26.7 | 3.2 | 96.8 | 0.0 |
| DI Khan | 135 | 2 | 35 | 0 | 37 | 27.4 | 5.4 | 94.6 | 0.0 |
| Dir Lower | 201 | 0 | 35 | 0 | 35 | 17.4 | 0.0 | 100.0 | 0.0 |
| Hangu | 282 | 1 | 64 | 0 | 65 | 23.0 | 1.5 | 98.5 | 0.0 |
| Haripur | 7 | 1 | 1 | 0 | 2 | 28.6 | 50.0 | 50.0 | 0.0 |
| Malakand | 118 | 0 | 9 | 0 | 9 | 7.6 | 0.0 | 100.0 | 0.0 |
| Mansehra | 18 | 0 | 9 | 0 | 9 | 50.0 | 0.0 | 100.0 | 0.0 |
| Mardan | 621 | 1 | 83 | 0 | 84 | 13.5 | 1.2 | 98.8 | 0.0 |
| Nowshera | 129 | 0 | 35 | 0 | 35 | 27.1 | 0.0 | 100.0 | 0.0 |
| Shangla | 30 | 0 | 8 | 0 | 8 | 26.7 | 0.0 | 100.0 | 0.0 |
| Swat | 39 | 0 | 0 | 0 | 0 | 0.0 | 0.0 | 0.0 | 0.0 |
| Total | 1,696 | 6 | 309 | 0 | 315 | 18.6 | 1.9 | 98.1 | 0.0 |

A total of **1,696** slides were tested for Malaria in this week. Out of which **315** slides were positive and accounted for SPR is **18.6%** including **2%** (6 slides) for Falciparum Ratio, **98.1%** (309 slides) for Vivax ratio and **0%** for Mixed ratio.

Current week's Alert/Outbreak in Khyber Pakhtunkhwa:

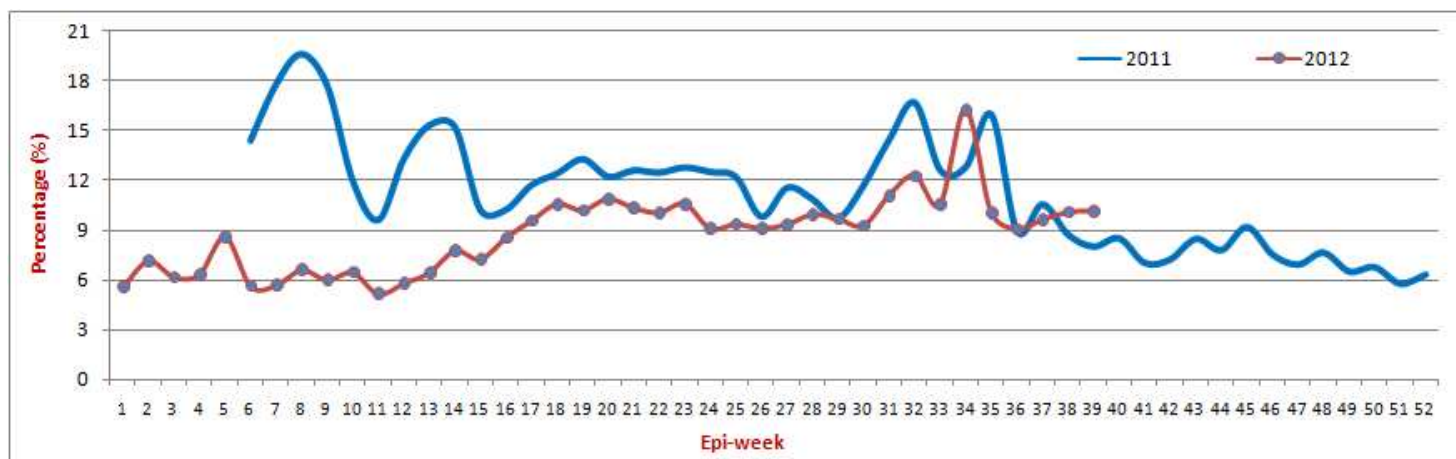
➤ A total of **58 alerts** including **2 outbreaks** (1 each for Acute Watery Diarrhea (AWD) and Dengue Fever (DF)) were received. 42 alerts for suspected Measles, 8 for AWD, 2 each for DF and Neonatal Tetanus (NNT) while 1 each for Diphtheria, Pertussis, suspected Typhoid and Viral Haemorrhagic Fever (VHF) were shared and responded.

| S. No | Date Investigated | Suspected Disease | District | Location | <5 M | >5 M | <5 F | >5 F | Sample | Positive | Cases | Death |
|-------|-------------------|-------------------|------------|---|------|------|------|------|--------|----------|-------|-------|
| 1 | 22-Sep-12 | Measles | Abbottabad | Birangali | 0 | 1 | 0 | 0 | 0 | r | 1 | 0 |
| 2 | 27-Sep-12 | Measles | Abbottabad | Gamani Gali, Abbottabad | 0 | 1 | 0 | 0 | 0 | r | 1 | 0 |
| 3 | 24-Sep-12 | AWD | Mardan | Village Toru Mera, UC Shamat Pur, Tehsil Mardan | 0 | 2 | 0 | 1 | 1 | r | 3 | 0 |
| 4 | 24-Sep-12 | AWD | Mardan | Village & Mohall Serai, UC Sherghar, Tehsil Takht Bhai | 1 | 3 | 1 | 3 | 1 | r | 8 | 0 |
| 5 | 25-Sep-12 | Measles | Mardan | Village Pir Abad, UC Seri Behlol, Tehsil Takht Bhai Mardan | 0 | 1 | 1 | 0 | 0 | r | 2 | 0 |
| 6 | 25-Sep-12 | AWD | Mardan | Village Khetab Abad, Bala Ghari, UC Shabaz Ghari, Tehsil Mardan | 0 | 1 | 0 | 0 | 1 | r | 1 | 0 |
| 7 | 25-Sep-12 | AWD | Mardan | Mohalla Gharib Abad, Village Bara Banda, Risalpur, Nowshera | 0 | 0 | 0 | 1 | 1 | r | 1 | 0 |
| 8 | 23-Sep-12 | Measles | Shangla | Village Kandhar UC dhandai | 1 | 0 | 0 | 1 | 2 | r | 2 | 0 |
| 9 | 25-Sep-12 | Measles | Shangla | Village Kuz pagorai | 0 | 0 | 0 | 1 | 1 | r | 1 | 0 |
| 10 | 24-Sep-12 | Measles | Battagram | Village Soorghai, UC Paimal | 1 | 0 | 0 | 0 | 0 | r | 1 | 0 |
| 11 | 25-Sep-12 | Measles | Battagram | Village Toheed Colony, UC Ajmaira | 0 | 1 | 0 | 0 | 0 | r | 0 | 0 |
| 12 | 25-Sep-12 | Measles | Battagram | Village Soorghai, UC Paimal | 0 | 0 | 1 | 0 | 0 | r | 0 | 0 |
| 13 | 25-Sep-12 | Measles | Battagram | Village Kar gharai, UC Thakot | 1 | 0 | 1 | 0 | 0 | r | 2 | 0 |
| 14 | 27-Sep-12 | Measles | Battagram | Village Maidan, UC Ajmaira | 0 | 1 | 0 | 0 | 0 | r | 1 | 0 |
| 15 | 27-Sep-12 | Measles | Battagram | Village Barthoni, District Toor Ghar | 0 | 0 | 1 | 0 | 0 | r | 1 | 0 |
| 16 | 28-Sep-12 | Measles | Battagram | Village Palango, UC Ajmaira | 0 | 1 | 0 | 0 | 0 | r | 1 | 0 |
| 17 | 28-Sep-12 | Measles | Battagram | Village Batagram, UC Batagram | 1 | 0 | 0 | 0 | 0 | r | 1 | 0 |
| 18 | 27-Sep-12 | Dengue Fever | Mansehra | Kohistan Colony Mansehra | 0 | 1 | 0 | 0 | 1 | r | 1 | 0 |
| 19 | 27-Sep-12 | Measles | Mansehra | Pano Road Near Lari Ada Mansehra | 0 | 1 | 0 | 0 | 0 | r | 1 | 0 |
| 20 | 27-Sep-12 | Measles | Mansehra | Village Kharar Mera UC Labarkot | 0 | 1 | 2 | 0 | 0 | r | 3 | 0 |
| 21 | 25-Sep-12 | Measles | Swat | Village & UC Khwazakhela. Near Qillah | 0 | 0 | 1 | 0 | 0 | r | 1 | 0 |
| 22 | 26-Sep-12 | Measles | Swat | Village & UC Panr Loe Banr | 1 | 0 | 0 | 0 | 0 | r | 1 | 0 |
| 23 | 26-Sep-12 | Measles | Swat | Village Kulbanar UC Behrain | 0 | 1 | 0 | 0 | 0 | r | 1 | 0 |
| 24 | 27-Sep-12 | Measles | Swat | Village Sumbat UC Baidaira | 0 | 0 | 0 | 1 | 0 | r | 1 | 0 |
| 25 | 27-Sep-12 | Measles | Swat | Village Balasoor UC Chuprial | 1 | 0 | 0 | 0 | 0 | r | 1 | 0 |
| 26 | 27-Sep-12 | Measles | Swat | Village Mandaldag UC Gwalera | 0 | 1 | 0 | 0 | 0 | r | 1 | 0 |
| 27 | 28-Sep-12 | Measles | Swat | Village & UC Miandam | 0 | 1 | 0 | 0 | 0 | r | 1 | 0 |
| 28 | 29-Sep-12 | Diphtheria | Shangla | Village Shalwo, dherai Alpuri, | 0 | 1 | 0 | 0 | 0 | r | 1 | 0 |
| 29 | 28-Sep-12 | Measles | Tank | Alikhel | 0 | 0 | 1 | 0 | 0 | r | 1 | 0 |
| 30 | 29-Sep-12 | Measles | Tank | Maghzai | 1 | 0 | 0 | 0 | 0 | r | 1 | 0 |
| 31 | 24-Sep-12 | Pertussis | Haripur | Village Tofkian, UC Tofkian | 2 | 0 | 0 | 0 | 2 | r | 2 | 0 |
| 32 | 24-Sep-12 | Measles | Haripur | Khanpur city, UC Khanpur | 1 | 0 | 0 | 0 | 0 | r | 1 | 0 |
| 33 | 25-Sep-12 | Typhoid | Haripur | Village Kohala | 0 | 2 | 1 | 0 | 2 | r | 3 | 0 |

| | | | | | | | | | | | | |
|----|-----------|--------------|------------|---|---|---|---|---|---|---|---|---|
| 34 | 25-Sep-12 | Measles | Haripur | Village Darlee, UC Luder mang | 1 | 2 | 1 | 1 | 0 | r | 5 | 0 |
| 35 | 27-Sep-12 | VHF | Haripur | Village Kangra, UC Panian | 0 | 1 | 0 | 0 | 0 | r | 1 | 0 |
| 36 | 27-Sep-12 | Dengue Fever | Haripur | Village Julian, UC Tofkian | 0 | 1 | 0 | 0 | 1 | r | 1 | 1 |
| 37 | 27-Sep-12 | Measles | Haripur | Kangra Colony, UC Panian | 0 | 0 | 1 | 0 | 0 | r | 1 | 0 |
| 38 | 28-Sep-12 | Measles | Haripur | Sabzee Mandi, Haripur city | 1 | 0 | 0 | 0 | 0 | r | 1 | 0 |
| 39 | 29-Sep-12 | Measles | Haripur | Khalabut Township Sector 2 | 1 | 0 | 0 | 0 | 0 | r | 1 | 0 |
| 40 | 29-Sep-12 | Measles | Haripur | Village Alloli, UC Jatti pind | 0 | 1 | 0 | 0 | 0 | r | 1 | 0 |
| 41 | 24-Sep-12 | AWD | Swabi | Qasam Kale, Yarhussain | 0 | 0 | 0 | 1 | 1 | r | 1 | 0 |
| 42 | 25-Sep-12 | AWD | Swabi | Babakhel, Yar Hussain | 0 | 0 | 0 | 1 | 1 | r | 1 | 0 |
| 43 | 26-Sep-12 | AWD | Swabi | Yar Hussain | 0 | 0 | 0 | 1 | 1 | r | 1 | 0 |
| 44 | 28-Sep-12 | AWD | Swabi | BMC Swabi, Baja | 0 | 1 | 0 | 0 | 1 | r | 1 | 0 |
| 45 | 23-Sep-12 | NNT | D. I. Khan | Jangli Ramak | 1 | 0 | 0 | 0 | 0 | r | 1 | 0 |
| 46 | 26-Sep-12 | Measles | D. I. Khan | Paroa | 1 | 1 | 0 | 0 | 0 | r | 2 | 0 |
| 47 | 26-Sep-12 | NNT | D. I. Khan | Mamrez | 0 | 0 | 1 | 0 | 0 | r | 1 | 0 |
| 48 | 27-Sep-12 | Measles | D. I. Khan | Pusha Pul | 1 | 0 | 0 | 0 | 0 | r | 1 | 0 |
| 49 | 27-Sep-12 | Measles | D. I. Khan | Ramak, UC Miran | 0 | 0 | 1 | 0 | 0 | r | 1 | 0 |
| 50 | 27-Sep-12 | Measles | Malakand | Batkhela | 2 | 0 | 0 | 0 | 0 | r | 2 | 0 |
| 51 | 27-Sep-12 | Measles | Malakand | Thana | 1 | 0 | 0 | 0 | 0 | r | 1 | 0 |
| 52 | 27-Sep-12 | Measles | Malakand | Amandara | 1 | 0 | 0 | 0 | 0 | r | 1 | 0 |
| 53 | 27-Sep-12 | Measles | Malakand | Malakand | 1 | 0 | 0 | 0 | 0 | r | 1 | 0 |
| 54 | 24-Sep-12 | Measles | Peshawar | Near Sabzi Mandi Phandu Peshawar | 0 | 0 | 1 | 0 | 1 | r | 1 | 0 |
| 55 | 24-Sep-12 | Measles | Peshawar | Landay Sarak Ikkhel Charsadda Road Peshawar | 2 | 0 | 1 | 0 | 1 | r | 3 | 0 |
| 56 | 24-Sep-12 | Measles | Peshawar | Village Zara Mena Near Warsak Dam Peshawar | 1 | 0 | 0 | 0 | 1 | r | 1 | 0 |
| 57 | 28-Sep-12 | Measles | Peshawar | Village Kamal Khel Kohat | 0 | 0 | 0 | 1 | 1 | r | 1 | 0 |
| 58 | 28-Sep-12 | Measles | Peshawar | Village Palosai Peshawar | 2 | 0 | 1 | 0 | 1 | r | 3 | 0 |

Federal Administered Tribal Areas (FATA):

Figure-12: Two years trend of Other Acute Diarrhoea in FATA



DEWS was started in FATA three agencies (Bajaur, Khyber, Mohmand) since February, 2011 during FATA IDPs crisis. Figure 11 shows 2 years weekly percentage trend of OAD percentage trend. In week 39 OAD 1,529 cases or 10.2% were shared showing 0.1% increase in percentage as compared to previous week.

Figure-13: Percentage of consultations by gender and age wise

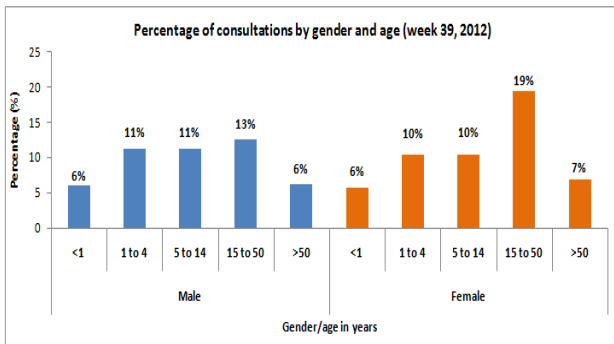
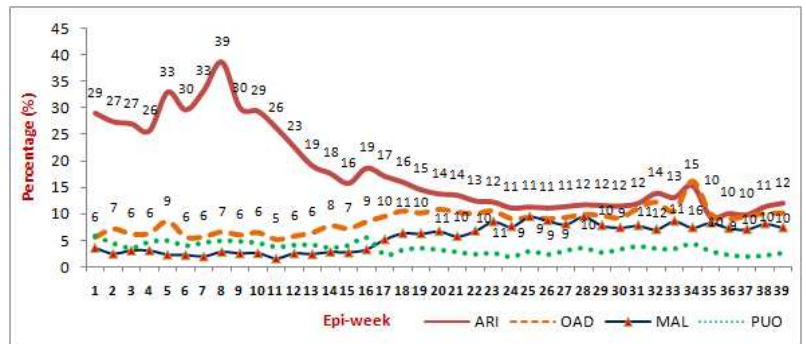
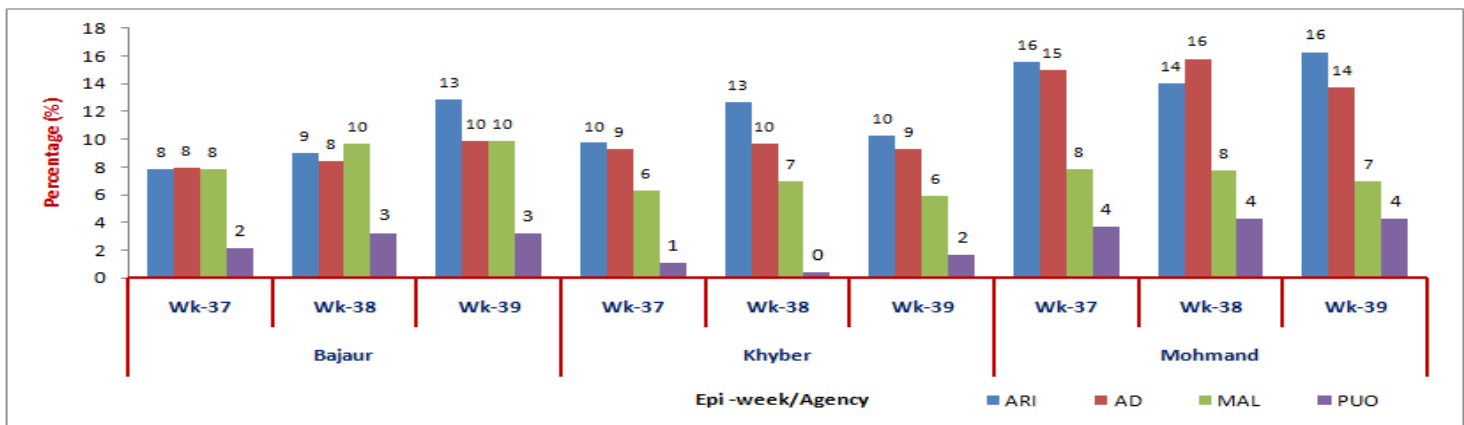


Figure-14: Weekly diseases (ARI, OAD, MAL and PUO) percentage trend



- Figure 12 shows percentage of consultations by gender and age wise in health events in over all diseases, male to female patients' ratio reported was **47%** or **7,133** cases and **53%** or **7,913** cases respectively
- Figure 13 shows weekly percentage trend of ARI, OAD, MAL and PUO from week 1 to 39, 2012.
- This week, 47 health facilities reported from 3 agencies to eDEWS with a total of **15,046** patients' consultations.
- Acute Respiratory Tract Infection (ARI) 1,819 cases reported were showing 1% increase in percentage as compared to week 38 patients' visits and accounted for 12.1% of the total consultations.
- Other Acute Diarrhea (OAD) 1,529 cases or 10.2% were showing 0.1% increase in percentage as compared to week 38 and suspected Malaria (Mal) 1,120 cases or 7.4% were shared.
- Pyrexia of Unknown Origin (PUO) shared 388 cases or 2.6% which shows 0.5% increase in percentage as compared to previous week, suspected Typhoid Fever (TF) 63 cases or 0.4% and Scabies 324 cases or 2.2% were reported.

Figure-15: ARI,OAD, MAL and PUO percentage situation of Federal Administered Treaty Agency (FATA) in last three weeks



The above figure 14 shows ARI, OAD, MAL and PUO percentage situation in FATA three agencies. During week 39, 2012 high percentage of ARI consultations were reported as compared to other diseases. In this week high percentage of Other Acute Diarrhoea and ARI consultations were reported from Mohmand as compared to Khyber and Bajaur agency. In this week OAD 14% or 312 cases, 10% or 520 cases and 9% or 697 cases were shared respectively from Mohmand, Bajaur and Khyber agencies. Similarly ARI 16% or 370 cases, 13% or 678 cases and 10% or 771 cases were shared respectively from Mohmand, Bajaur and Khyber agencies. Pyrexia Unknown Origin (PUO) cases percentage were reported 4% or 96 cases, 3% or 166 cases and 2% or 126 cases respectively from Mohmand, Bajaur and Khyber agencies. Suspected Malaria were shared 10% or 519 cases from Bajaur, 7% or 158 cases from Mohmand and 6% or 443 cases from Khyber agency.

Table-5: Malaria Slides/RDT examination report of FATA agency wise in week 39, 2012

| Agency | Slides / RDT examined | P. Falciparum | P. Vivax | P. Mixed | Total +Ve | Slide Positivity Rate (SPR) | Falciparum Rate (FR) | Vivax Rate | Mixed Rate |
|--------------|-----------------------|---------------|------------|----------|------------|-----------------------------|----------------------|-------------|------------|
| Bajaur | 506 | 18 | 106 | 3 | 127 | 25.1 | 16.5 | 83.5 | 2.4 |
| Khyber | 381 | 0 | 92 | 0 | 92 | 24.1 | 0.0 | 100.0 | 0.0 |
| Mohmand | 135 | 8 | 50 | 0 | 58 | 43.0 | 13.8 | 86.2 | 0.0 |
| Total | 1,022 | 26 | 248 | 3 | 277 | 27.1 | 10.5 | 89.5 | 1.1 |

A total of **1,022** slides were examined for Malaria in this week. Out of which **277** slides were positive and accounted for SPR is **27.1%** including **10.5%** (29 slides) for Falciparum Ratio, **89.5%** (248 slides) for Vivax and **1.1%** (3 slides) for Mixed.

Current week's Alert/Outbreak in FATA:

➤ A total of 2 alerts (1 each for suspected Measles and Cutaneous Leishmaniasis (CL) including 1 outbreak) were reported and responded in this week.

| S. No. | Date Investigated | Suspected Disease | Agency | Location | <5 M | >5 M | <5 F | >5 F | Sample | Positive | Cases | Death |
|--------|-------------------|-------------------|---------------|---|------|------|------|------|--------|----------|-------|-------|
| 1 | 26-Sep-12 | Leishmaniasis | Khyber Agency | Village Karawal, UC Kohi, Tehsil Bara | 3 | 10 | 0 | 12 | 0 | r | 25 | 0 |
| 2 | 28-Sep-12 | Measles | Khyber Agency | Village Amin Jan, UC Pindi Lalma, Tehsil Mulagori | 1 | 0 | 0 | 0 | 0 | r | 1 | 0 |

Figure 16: Total number of alerts including outbreaks situation in KP and FATA through eDEWS System (Week 39, 2012)

