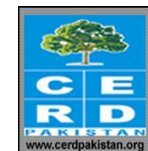


Disease situation in Jalozai IDP's camp, Khyber Pakhtunkhwa Week 33 (August 12th to 18th, 2012)

Highlights:

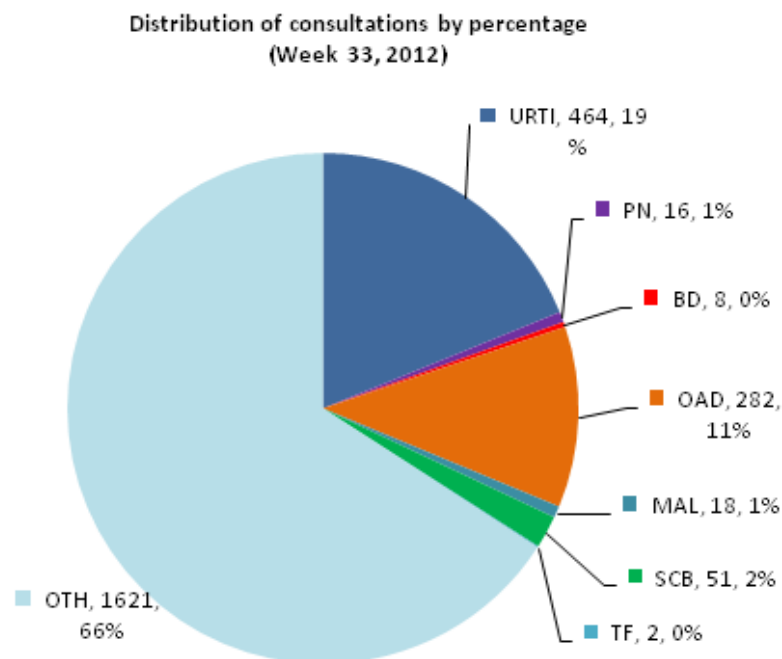
- ❖ **Acute Respiratory tract infections (ARI)** accounted for **19.4% or 480 cases** of the total patients (**2,462** consultations) in all age groups and is showing 1.4% increase in percentage of ARI patient visits as compared to week 32, 2012.
- ❖ **Other Acute Diarrhea (OAD)** accounted for **9.5% or 282 cases** of the total patient consultations in all age groups by showing 2.2% increase in percentage as compared to OAD patient visits in previous week.
- ❖ **Bloody Diarrhea (BD)** shared **0.3% or 8 cases** and also confirmed **Malaria (MAL)** shared **1% or 18 cases** of all patient visits in current week.
- ❖ **Skin Infections (SCB)** reported as **2.1% or 51 cases** of the total patient consultations.
- ❖ No alert was reported in this week



Weekly disease consultations in Jalozai IDPs camp:-

Figure 1: Distribution of consultations by percentage

Table 1: Cases reported from Jalozai IDPs camp



Disease name	Week-33	
	Cases	%
Upper Respiratory Tract Infection (URTI)	464	18.8
Pneumonia (PN)	16	0.6
Bloody Diarrhea (BD)	8	0.3
Other Acute Diarrhea (OAD)	282	11.5
Acute Watery Diarrhea (AWD)	-	-
Confirmed Malaria (MAL)	18	1
Scabies (SCB)	51	2.1
Chronic Viral Hepatitis (CVH)	-	-
Suspected Measles (Meas)	-	-
Acute Flaccid Paralysis	-	-
Cutaneous Leishmaniasis (CL)	-	-
Suspected Typhoid Fever (TF)	2	0.1
Other diseases (OTH)	1,621	65.8
Total consultations	2,462	

A total **2,462** consultations have been reported through DEWS during week 33 (August 12th to 18th, 2012) (table 1). **Six (6) health static units** (Merlin International 4 and CAMP Organization 2) from Jalozai IDPs camp shared daily/weekly disease surveillance data through DEWS.

Major causes for seeking health care percentage trend in Jalozai IDPs camp:-

Figure 2: Weekly disease percentage trend in Jalozai IDPs camp (Week 14 to 33, 2012):

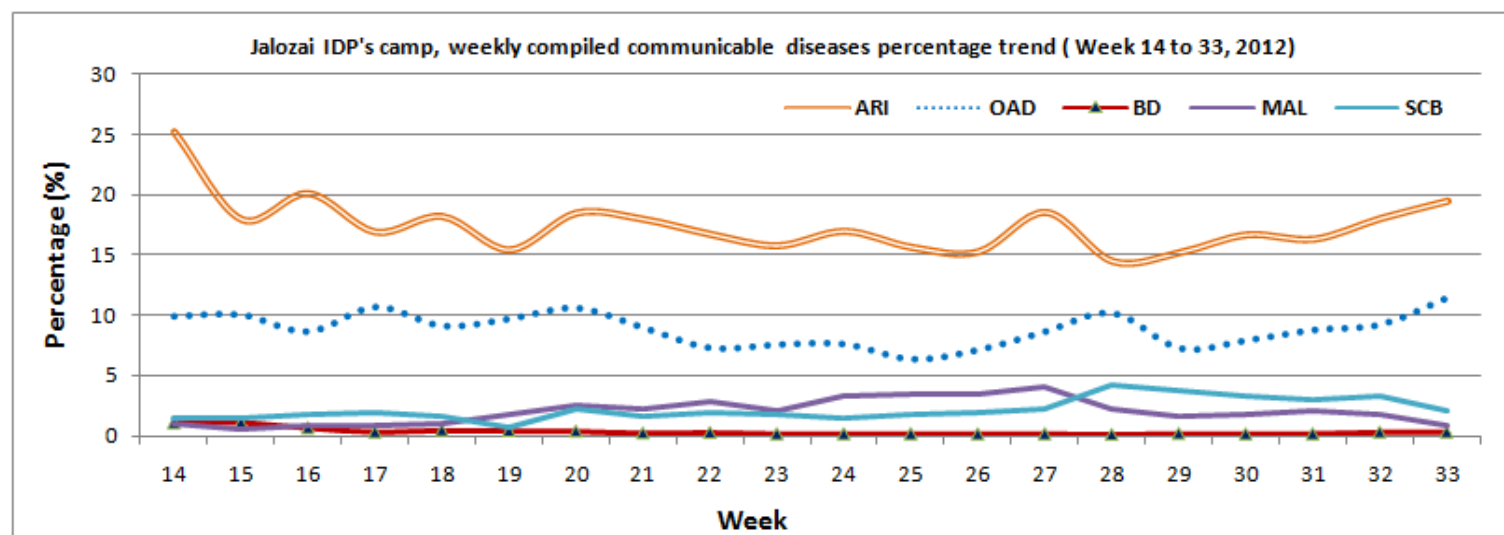


Figure 2 shows percentage trend of major communicable diseases in Jalozai IDPs camp. In this week ARI shared 19.4% or 480 cases is showing 1.4% increase and OAD shared 11.5% or 282 cases is showing 2.2% increase in percentage.

Total consultations reported from all health units in Jalozai IDPs camp:-

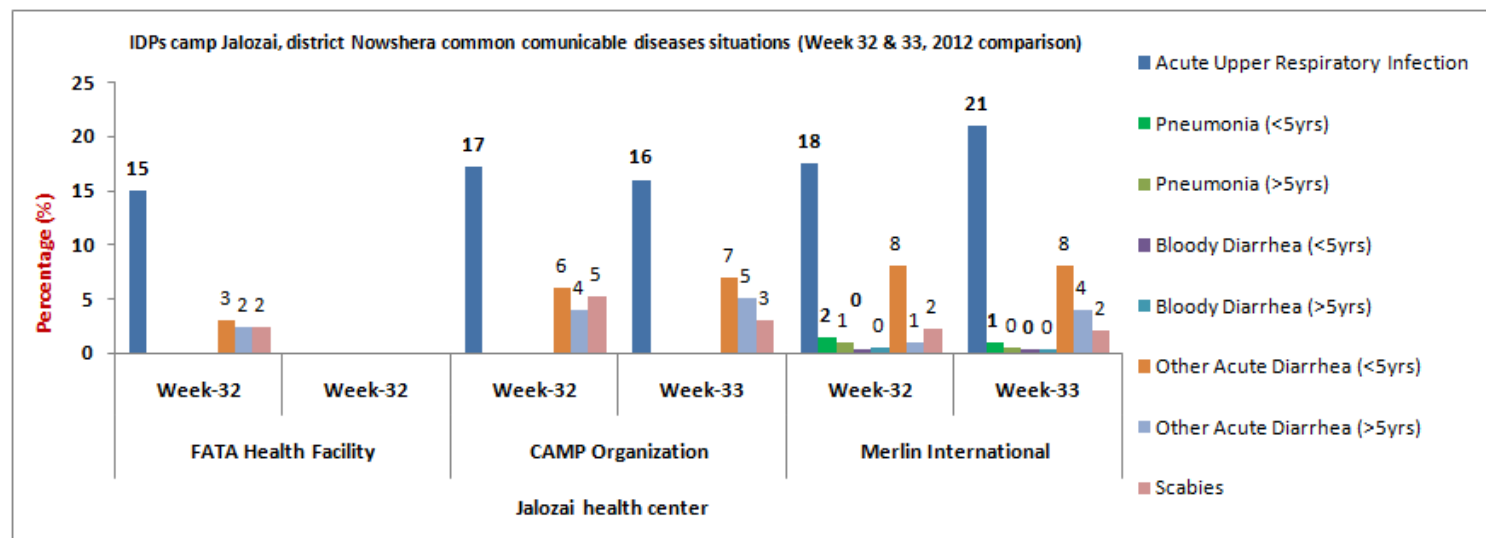
Communicable diseases	CAMP (2 units)				Merlin (4 units)				FATA Health facility (1 unit)			
	Wk-32 (Cases)	%	Wk-33 (Cases)	%	Wk-32 (Cases)	%	Wk-33 (Cases)	%	Wk-32 (Cases)	%	Wk-33 (Cases)	%
Acute Upper Respiratory Infection	195	17.2	160	15.9	258	17.6	304	20.9	98	15	-	-
Pneumonia (<5yrs)	-	-	-	-	22	1.5	10	0.7	-	-	-	-
Pneumonia (>5yrs)	-	-	-	-	14	1	6	0.4	-	-	-	-
Bloody Diarrhea (<5yrs)	-	-	-	-	4	0.3	4	0.3	-	-	-	-
Bloody Diarrhea (>5yrs)	-	-	-	-	6	0.4	4	0.3	-	-	-	-
Other Acute Diarrhea (<5yrs)	69	6	65	6.5	119	8	117	8	20	3	-	-
Other Acute Diarrhea (>5yrs)	41	3.6	49	4.9	36	2.5	51	3.5	15	2.3	-	-
Acute Watery Diarrhea (>5yrs)	-	-	-	-	-	-	-	-	-	-	-	-
Confirmed Malaria	15	1.3	8	<1	14	1	10	<1	-	-	-	-
Suspected Measles (Meas)	-	-	-	-	-	-	-	-	-	-	-	-
Acute Flaccid Paralysis (AFP)	-	-	-	-	-	-	-	-	-	-	-	-
Scabies (SCB)	59	5.2	27	2.7	33	2.3	24	1.6	15	2.3	-	-
Suspected Typhoid Fever (TF)	1	<1	2	0.2	-	-	-	-	-	-	-	-
Chronic Viral Hepatitis (CVH)	-	-	-	-	4	0.3	-	-	-	-	-	-
Other diseases	752	66	693	69	960	65	928	63.6	503	77	-	-
Total Consultations	1,132		1,004		1,466		1,458		651		-	

A comparison of the ARI consultations by health units in Jalozai camp on week 33 (August 12 to 18) shows that high proportion of ARI cases are reported accounted for 19.4% (URTI 18.8% and Pneumonia 0.6%), or 587 cases

followed by Other Acute Diarrhea 11.5% or 282 cases. Bloody diarrhea comprised 0.3% or 8 cases in consolidated data out of total consultations.

Disease trends by percentage in IDPs Jalozai camp:-

Figure 3: Most common communicable diseases situation in Jalozai IDPs camp as percentage of consultations (Week 32 and 33 comparison)



The above figure 3 shows major health causes percentage situation in Jalozai IDPs camp. During week 33 high percentages of OAD and ARI consultations were reported from Merlin health posts as compared to CAMP health facilities units. In this week OAD 11.5% and ARI 20% were shared from Merlin health facilities and also OAD 11.4% and ARI 16% were from CAMP static units. No alert was reported in this week.

Distribution of consultations percentage by age and gender

Figure 4: Age and gender wise segregated disease situation in Jalozai IDPs camp, week 33

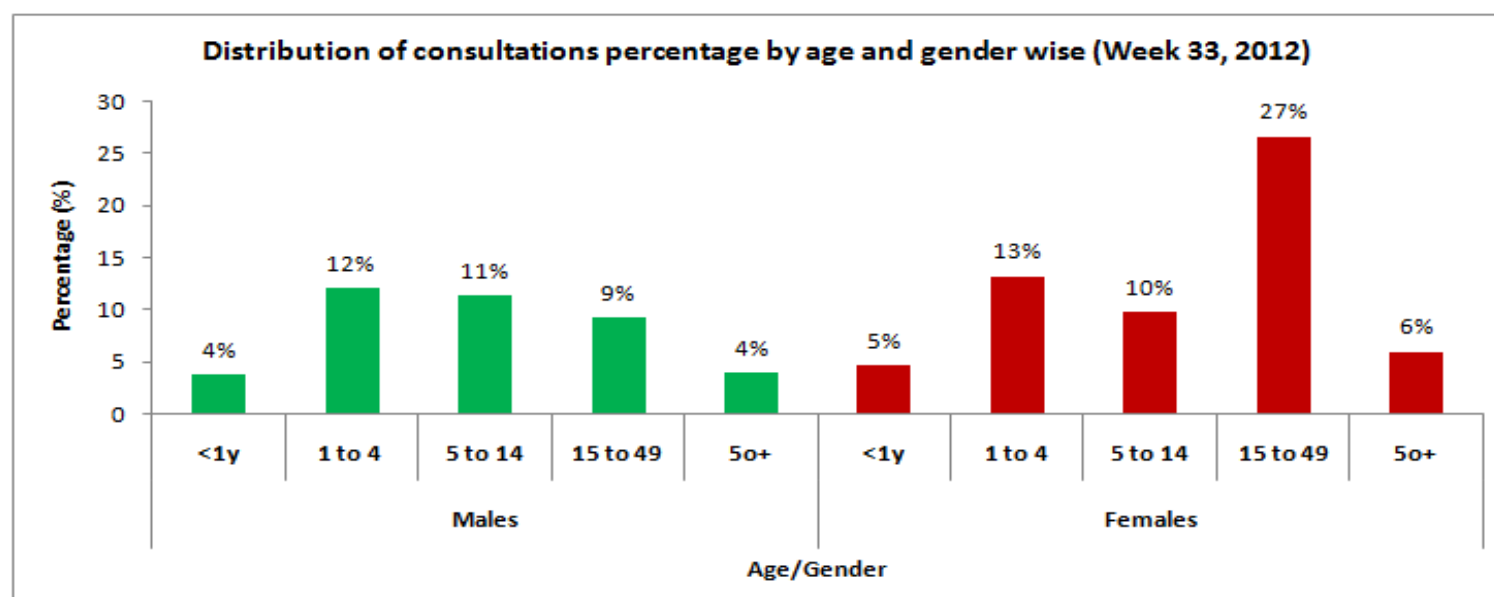


Figure 4 shows comparison of the consultations by gender and age wise in health events in over all diseases, male to female patients' ratio reported was **40% or 982** cases and **60% or 1,480** cases respectively.

Immunization in Jalozai IDPs camp:-

Table 3 (a & b): Immunization (Jalozai IDP's Camp, Nowshera) from 12th to 18th August, 2012

a) Routine vaccination of Jalozai IDPs camp (Week 33):

EPI	Routine Vaccination										OPV U5 yrs	Women	TT1	TT2	TT3	TT4	TT5	Total
	Children	BCG	Polio			PENTA			Measles	Fully Immunized								
			Birth	1	2	3	1	2										
<1 year	28	26	27	26	35	27	26	35	22	33	0	Pregnant	13	26	3	0	0	455
>=1 year	3	0	5	7	20	5	7	20	14	15	0	Non-Pregnant (15-49y)	16	9	6	1	0	
Total	31	26	32	33	55	32	33	55	36	48	0	-	29	35	9	1	0	455

b) Routine vaccination of Jalozai IDPs camp (Consolidated data of all vaccination points in Jalozai IDP camp):

EPI	Routine Vaccination										OPV U5 yrs	Women	TT1	TT2	TT3	TT4	TT5	Total
	Children	BCG	Polio			PENTA			Measles	Fully Immunized								
			Birth	1	2	3	1	2										
<1 year	1,502	969	1,655	1,248	1,122	1,694	1,265	1,128	1,419	861	2,727	Pregnant	1,802	939	130	37	4	86,863
>=1 year	1,316	0	1,290	651	594	1,290	653	595	2,610	516	51,449	Non-Pregnant (15-49y)	5,360	770	798	401	68	
Total	2,818	969	2,945	1,899	1,716	2,984	1,918	1,723	4,029	1,377	54,176	-	7,162	1,709	928	438	72	86,863

Laboratory test conducted in Jalozai IDPs camp:-

Table 4 (a & b): Laboratory test situation in IDPs Jalozai Camp, Nowshera

a) laboratory test situation data in Jalozai IDPs camp (August 12 to 18, 2012):

Test Name	MP (microscopy)	MP (RDT)*	HB%	HBS	HCV	B.GROUP	B.SUGAR	ESR	LEISHMANIASIS	PREGNENCIES	URINE ALBUMIN	URINE SUGAR	URINE R/E	STOOL R/E	BILLIRUBIN	Syphilis	SPUTUM FOR AFB	TOTAL
+Ve	8	18	7	2	1	-	4	-	0	25	0	0	2	2	0	0	0	-
-Ve	34	52	23	24	25	-	31	-	0	13	1	1	2	4	0	25	0	-
Total	42	70	30	26	26	24	35	0	0	38	1	1	4	6	0	25	0	328

* Malaria slides /RDT examined report

Health Centers	Slides/RDT examined	P. Falciparum	P. Vivax	Mixed	Total +ve	Falciparum + Mixed	Slide Positivity Rate (SPR)	Falciparum Rate
Merlin	28	0	10	0	10	0	35.7	0
CAMP	42	0	8	0	8	0	19.0	0
Total	70	0	18	0	18	0	25.7	0

A total of 70 slides were examined for Malaria in this week. Out of total slides examined 18 (26%) were positive; out of which P. Falciparum 0 (0%), P. Vivax 18 (26%) and Mixed 0 (0%) were shared.

b) laboratory test situation data in Jalozai IDPs camp (Consolidated):

Test Name	MP (microscopy)	MP (RDT)*	HB% ++	HBS	HCV	B.GROUP	B.SUGAR	ESR	LEISHMANIASIS	PREGNENCIES	URINE ALBUMIN	URINE SUGAR	URINE R/E	STOOL R/E	BILIRUBIN	Syphilis	SPUTUM FOR AFB	TOTAL
+Ve	388	444	329	41	31	-	101	-	0	511	79	15	256	67	1	6	0	-
-Ve	687	665	904	999	935	-	768	-	28	364	800	874	747	81	690	882	1	-
Total	1,075	1,109	1,233	1,040	966	929	869	14	28	875	879	889	1,003	148	691	888	1	12,610

Nutrition situation in Jalozai IDPs camp:-

Table 5: Nutrition situation in IDPs Jalozai camp Nowshera

➤ Nutrition situation data (Week 33):

CMAM Finding	No of Children screened (6-59 months)		MAM MUAC < 12.5-11.5 cm		SAM MUAC < 11.5cm		Malnutrition at Risk Borderline MUAC ≤13.5-12.5 cm		No Of PLW Screened		Malnourish PLW	
	M	F	M	F	M	F	M	F	P	L	P. MUAC<21	L. MUAC<21
Number of screened	85	93	4	6	2	0	10	23	44	35	6	1
Total	178		10		2		33		79		7	

➤ Nutrition situation data (Consolidated):

CMAM Finding	No of Children screened (6-59 months)		MAM MUAC < 12.5-11.5 cm		SAM MUAC < 11.5cm		Malnutrition at Risk Borderline MUAC ≤13.5-12.5 cm		No Of PLW Screened		Malnourish PLW	
	M	F	M	F	M	F	M	F	P	L	P. MUAC<21	L. MUAC<21
Number of screened	4,109	4,232	349	475	87	119	447	565	1,559	3,040	208	219
Total	8,341		824		206		1,012		4,599		427	

Health Education situation in Jalozai IDPs camp:-

Table 6: Health education situation in IDP's Jalozai camp Nowshera

Data of health education situation (Week 33, 2012)					Data of health education situation (Consolidated)				
Sessions	Number of Sessions	Total participants			Sessions	Number of Sessions	Total participants		
		Males	Females	Total			Males	Females	Total
Total Sessions	422	1,214	1,889	3,103	Total Sessions	9,501	25,849	50,400	77,456

MCH in Jalozai IDPs camp:-

Figure 5: MCH situation in IDP's Jalozai camp Nowshera (August 12 to 18, 2012)

