

## Disease situation in Jalozai IDP's camp, Khyber Pakhtunkhwa Week 49 (December 02<sup>nd</sup> to 08<sup>th</sup>, 2012)

### Highlights:

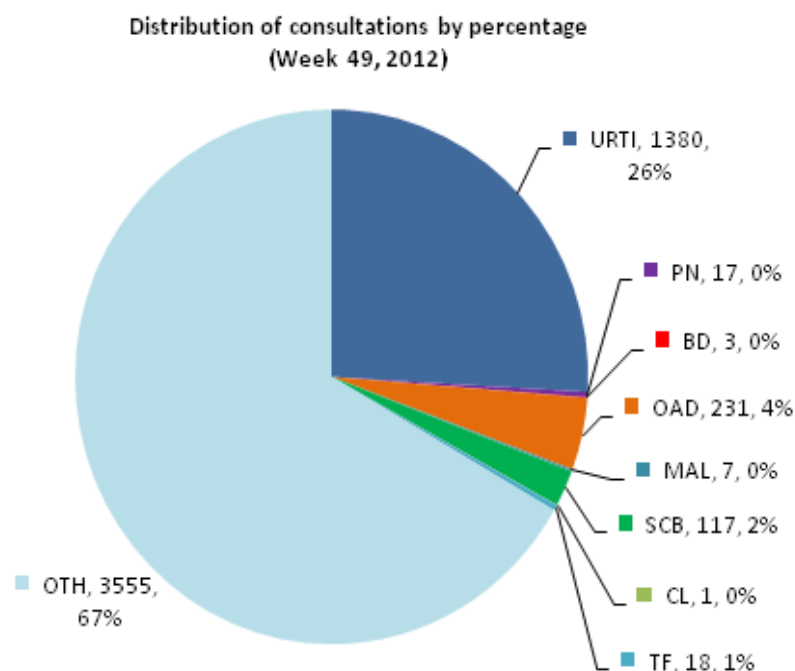
- ❖ **Acute Respiratory tract infections (ARI)** accounted for **26.2% or 1,397 cases** of the total patients (**5,329** consultations) in all age groups and is showing 4% decrease in percentage of ARI patient visits as compared to week 48, 2012.
- ❖ **Other Acute Diarrhea (OAD)** accounted for **4.3% or 231 cases** of the total patient consultations in all age groups by showing 1% decrease in percentage as compared to OAD patient visits in previous week.
- ❖ Confirmed **Malaria (MAL)** shared **0.1% or 7 cases** of all patient visits in current week.
- ❖ **Skin Infections (SCB)** reported as **2.2% or 117 cases** of the total patient consultations.
- ❖ One alert of **Cutaneous Leishmaniasis (CL)** was reported in this week.



### Weekly disease consultations in Jalozai IDPs camp:-

Figure 1: Distribution of consultations by percentage

Table 1: Cases reported from Jalozai IDPs camp



Disease name	Week-49	
	Cases	%
Upper Respiratory Tract Infection (URTI)	1,380	26
Pneumonia (PN)	17	0.3
Bloody Diarrhea (BD)	3	0.1
Other Acute Diarrhea (OAD)	231	4.3
Acute Watery Diarrhea (AWD)	-	-
Confirmed Malaria (MAL)	7	0.1
Scabies (SCB)	117	2.2
Chronic Viral Hepatitis (CVH)	-	-
Suspected Measles (Meas)	-	-
Pyrexia Unknown Origin (PUO)	-	-
Cutaneous Leishmaniasis (CL)	1	<1
Suspected Typhoid Fever (TF)	18	0.3
Other diseases (OTH)	3,555	66.7
<b>Total consultations</b>	<b>5,329</b>	

A total **5,329** consultations have been reported through DEWS during week 49 (December 2 to 8, 2012) (table 1). **Seven (7) health static units** (Merlin International 4, CAMP Organization 2 and FATA health facility 1) from Jalozai IDPs camp shared daily/weekly disease surveillance data through DEWS.

## Major causes for seeking health care percentage trend in Jalozai IDPs camp:-

Figure 2: Weekly disease percentage trend in Jalozai IDPs camp (Week 14 to 49, 2012):

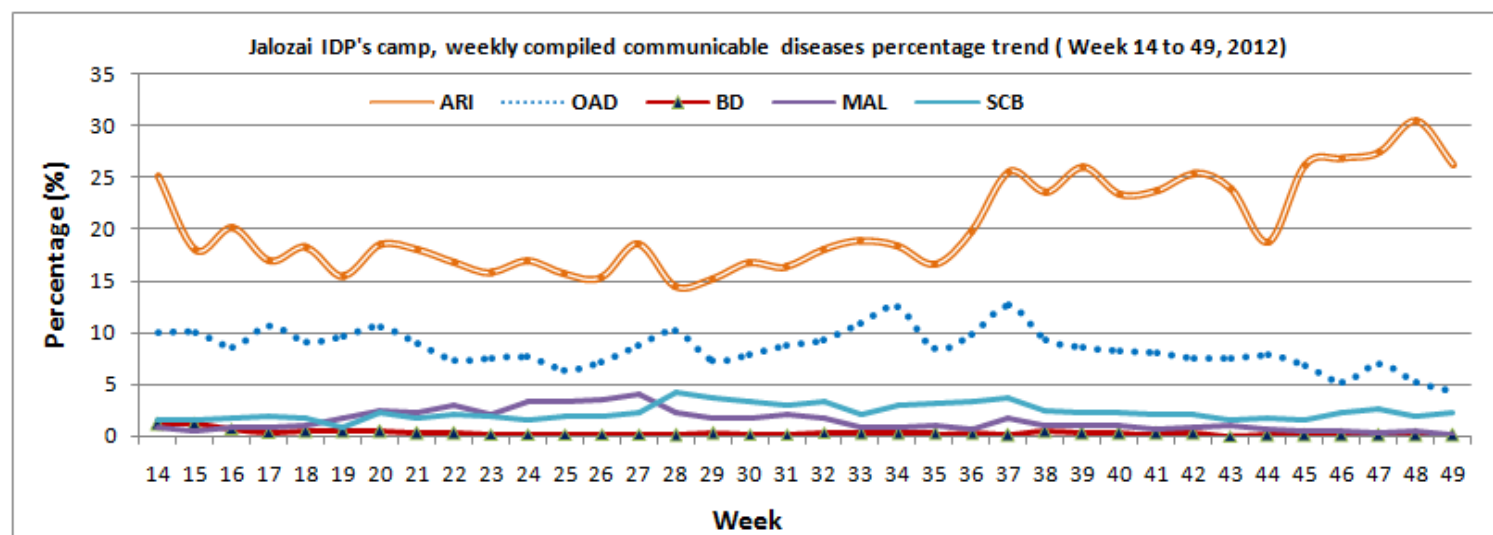


Figure 2 shows percentage trend of major communicable diseases in Jalozai IDPs camp. In this week ARI shared 26.2% or 1,397 cases is showing 4% decrease and OAD shared 4.3% or 231 cases is showing 1% decrease in percentage.

## Total consultations reported from all health units in Jalozai IDPs camp:-

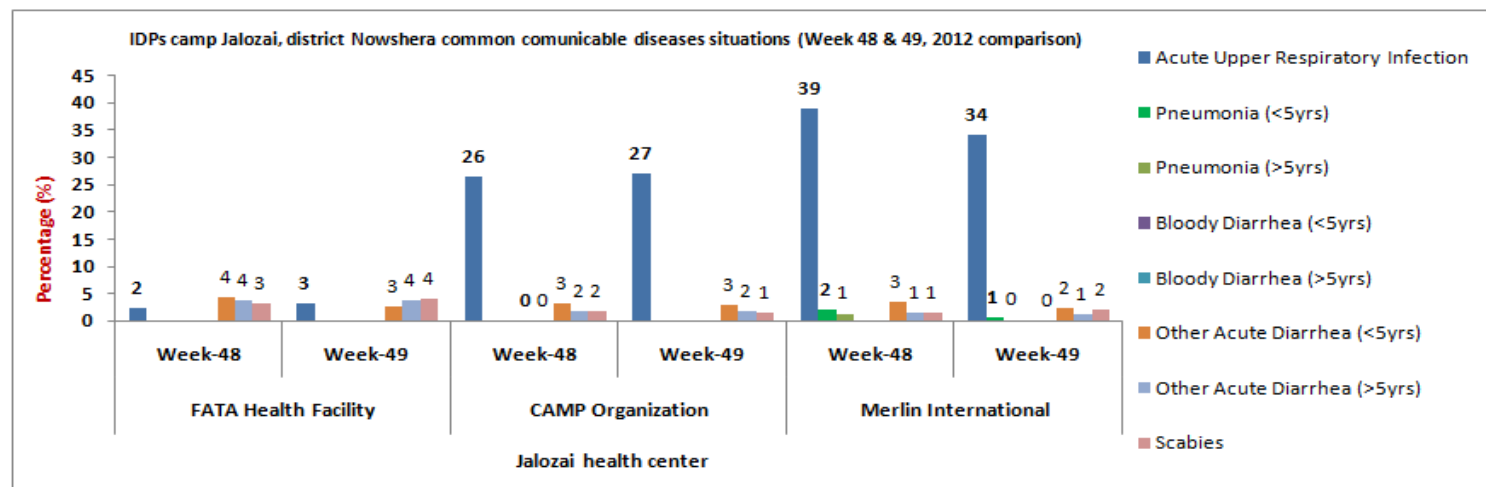
Communicable diseases	CAMP (2 units)				Merlin (4 units)				FATA Health facility (1 unit)			
	Wk-48 (Cases)	%	Wk-49 (Cases)	%	Wk-48 (Cases)	%	Wk-49 (Cases)	%	Wk-48 (Cases)	%	Wk-49 (Cases)	%
Acute Upper Respiratory Infection	493	26.4	493	27	1,147	39	855	34.1	21	2.2	32	3.2
Pneumonia (<5yrs)	-	-	-	-	55	2	13	0.5	-	-	-	-
Pneumonia (>5yrs)	-	-	-	-	38	1.3	4	0.2	-	-	-	-
Bloody Diarrhea (<5yrs)	1	0.1	-	-	1	<1	1	<1	-	-	-	-
Bloody Diarrhea (>5yrs)	2	0.1	-	-	1	<1	2	0.1	-	-	-	-
Other Acute Diarrhea (<5yrs)	58	3.1	53	2.9	98	3.3	55	2.2	40	4.2	27	2.7
Other Acute Diarrhea (>5yrs)	32	1.7	29	1.6	37	1.3	29	1.2	36	3.8	38	3.8
Suspected Measles (Meas)	-	-	-	-	-	-	-	-	-	-	-	-
Confirmed Malaria	6	0.3	2	0.1	3	0.1	5	0.2	-	-	-	-
Cutaneous Leishmaniasis (CL)	2	0.1	-	-	-	-	1	<1	-	-	-	-
Pyrexia Unknown Origin (PUO)	-	-	-	-	-	-	-	-	-	-	-	-
Scabies (SCB)	32	1.7	26	1.4	41	1.4	51	2	30	3.2	40	4
Suspected Typhoid Fever (TF)	12	0.6	17	1	1	<1	1	<1	-	-	-	-
Chronic Viral Hepatitis (CVH)	-	-	-	-	-	-	-	-	-	-	-	-
Other diseases	1,226	66	1,206	66	1,526	52	1,488	59.4	821	86.6	861	86.3
<b>Total Consultations</b>	<b>1,864</b>		<b>1,826</b>		<b>2,948</b>		<b>2,505</b>		<b>948</b>		<b>998</b>	

A comparison of the ARI consultations by health units in Jalozai camp on week 49 (December 2 to 8) shows that high proportion of ARI cases are reported accounted for 26.2% (URTI 26% and Pneumonia 0.3%), or 1,397 cases

followed by Other Acute Diarrhea 4.3% or 231 cases. Confirmed Malaria comprised 0.1% or 7 cases in consolidated data out of total consultations.

### Disease trends by percentage in IDPs Jalozai camp:-

**Figure 3: Most common communicable diseases situation in Jalozai IDPs camp as percentage of consultations (Week 48 and 49 comparison)**



The above figure 3 shows major health causes percentage situation in Jalozai IDPs camp. During week 49 high percentages of ARI consultations were reported from CAMP health units as compared to Merlin health units and FATA health facility. Similarly high percentages of OAD consultations were reported from FATA health unit as compared to CAMP and Merlin health facilities. In this week ARI 35% and OAD 3.4% were shared from CAMP health facilities, ARI 27% and OAD 4.5% were from Merlin health units, also ARI 3.2% and OAD 6.5% were from FATA health center. One alert of Cutaneous Leishmaniasis (CL) was reported from Merlin health facilities in this week.

### Distribution of consultations percentage by age and gender

**Figure 4: Age and gender wise segregated disease situation in Jalozai IDPs camp, week 49**

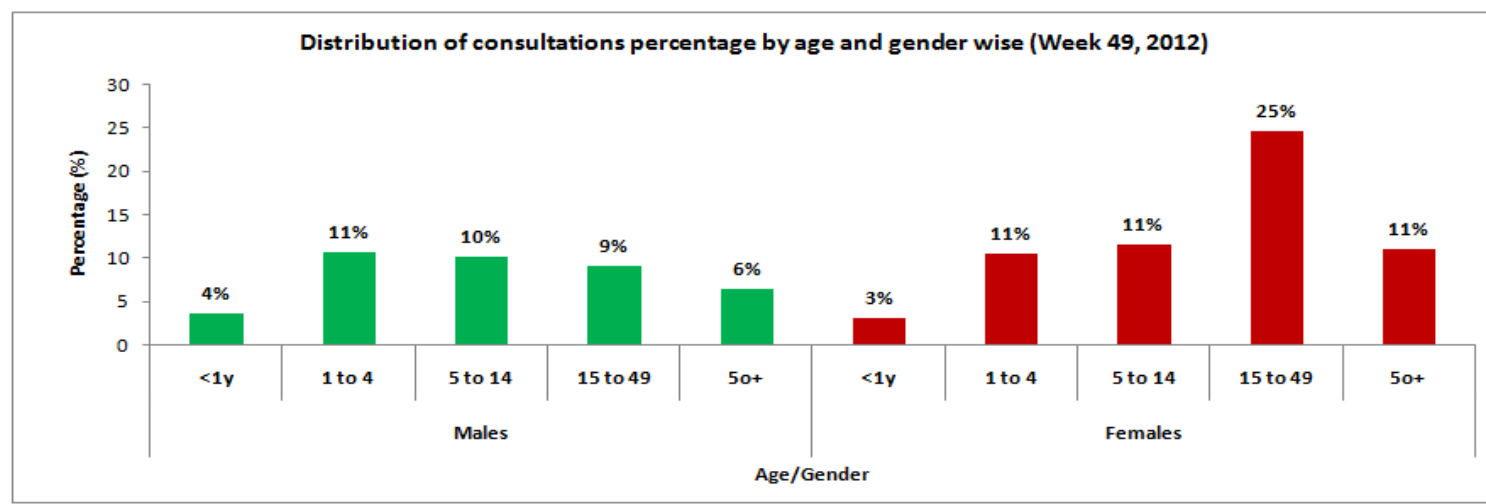


Figure 4 shows comparison of the consultations by gender and age wise in health events in over all diseases, male to female patients' ratio reported was **39.4% or 2,102 cases** and **60.6% or 3,227 cases** respectively.

## Immunization in Jalozai IDPs camp:-

Table 3 (a & b): Immunization (Jalozai IDP's Camp, Nowshera) from 2<sup>nd</sup> to 8<sup>th</sup> December, 2012

### a) Routine vaccination of Jalozai IDPs camp (Week 49):

EPI	Routine Vaccination										OPV U5 yrs (Other than Routine)*	Women	TT1	TT2	TT3	TT4	TT5	Total
	Children	BCG	Polio			PENTA			Measles	Fully Immunized								
<1 year	Birth		1	2	3	1	2	3										
<1 year	83	50	107	82	84	107	82	84	143	75	16	Pregnant	58	46	27	5	2	1,962
>=1 year	9	0	33	23	9	33	23	9	144	40	543	Non-Pregnant (15-49y)	23	9	7	5	1	
<b>Total</b>	<b>92</b>	<b>50</b>	<b>140</b>	<b>105</b>	<b>93</b>	<b>140</b>	<b>105</b>	<b>93</b>	<b>287</b>	<b>115</b>	<b>559</b>	<b>-</b>	<b>81</b>	<b>55</b>	<b>34</b>	<b>10</b>	<b>3</b>	

### b) Routine vaccination of Jalozai IDPs camp (Consolidated data of all vaccination points in Jalozai IDP camp):

EPI	Routine Vaccination										OPV U5 yrs (Other than Routine)*	Women	TT1	TT2	TT3	TT4	TT5	Total
	Children	BCG	Polio			PENTA			Measles	Fully Immunized								
<1 year	Birth		1	2	3	1	2	3										
<1 year	2,491	1,656	2,909	2,231	2,094	2,948	2,256	2,098	2,555	1,670	3,591	Pregnant	2,893	1,700	314	61	8	129,337
>=1 year	1,429	0	1,572	862	827	1,594	863	833	3,452	751	75,338	Non-Pregnant (15-49y)	7,463	1,148	1,099	528	103	
<b>Total</b>	<b>3,920</b>	<b>1,656</b>	<b>4,481</b>	<b>3,093</b>	<b>2,921</b>	<b>4,542</b>	<b>3,119</b>	<b>2,931</b>	<b>6,007</b>	<b>2,421</b>	<b>78,929</b>	<b>-</b>	<b>10,356</b>	<b>2,848</b>	<b>1,413</b>	<b>589</b>	<b>111</b>	

\*OPV dosage received during OPD and not the ones in the routine

## Laboratory test conducted in Jalozai IDPs camp:-

Table 4 (a & b): Laboratory test situation in IDPs Jalozai Camp, Nowshera

### a) laboratory test situation data in Jalozai IDPs camp (December 2 to 8, 2012):

Test Name	MP (microscopy)	MP (RDT)*	HB%	HBS	HCV	B.GROUP	Typhoid	B.SUGAR	ESR	LEISHMANIASIS	PREGNENCIES	URINE ALBUMIN	URINE SUGAR	URINE R/E	STOOL R/E	BILIRUBIN	Syphilis	SPUTUM FOR AFB	TOTAL
<b>+Ve</b>	2	7	15	3	4	-	1	13	-	1	40	4	1	37	4	4	0	0	-
<b>-Ve</b>	35	82	67	82	83	-	9	51	-	0	24	92	95	67	5	92	76	0	-
<b>Total</b>	<b>37</b>	<b>89</b>	<b>82</b>	<b>85</b>	<b>87</b>	<b>0</b>	<b>10</b>	<b>64</b>	<b>0</b>	<b>1</b>	<b>64</b>	<b>96</b>	<b>96</b>	<b>104</b>	<b>9</b>	<b>96</b>	<b>76</b>	<b>0</b>	<b>996</b>

\* Malaria slides /RDT examined report

Health Centers	Slides/RDT examined	P. Falciparum	P. Vivax	Mixed	Total +ve	Falciparum + Mixed	Slide Positivity Rate (SPR)	Falciparum Rate
Merlin	52	0	5	0	5	0	9.6	0
CAMP	37	0	2	0	2	0	5.4	0
<b>Total</b>	<b>89</b>	<b>0</b>	<b>7</b>	<b>0</b>	<b>7</b>	<b>0</b>	<b>7.9</b>	<b>0</b>

A total of 89 slides were examined for Malaria in this week. Out of total slides examined 7 (8%) were positive; out of which P. Falciparum 0 (0%), P. Vivax 7 (8%) and Mixed 0 (0%) were shared.

b) laboratory test situation data in Jalozai IDPs camp (Consolidated):

Test Name	MP (microscopy)	MP (RDT)*	HB% ++	HBS	HCV	B.GROUP	Typhoid	B.SUGAR	ESR	LEISHMANIASIS	PREGNENCIES	URINE ALBUMIN	URINE SUGAR	URINE R/E	STOOL R/E	BILIRUBIN	Syphilis	SPUTUM FOR AFB	TOTAL
<b>+Ve</b>	535	732	497	59	59	-	17	200	-	11	821	151	25	526	94	36	8	0	-
<b>-Ve</b>	1,066	1,491	1,701	1,850	1,800	-	96	1,582	-	68	651	1,557	1,688	1,381	128	1,447	1,640	2	-
<b>Total</b>	<b>1,601</b>	<b>2,223</b>	<b>2,198</b>	<b>1,909</b>	<b>1,859</b>	<b>1,766</b>	<b>113</b>	<b>1,782</b>	<b>24</b>	<b>79</b>	<b>1,472</b>	<b>1,708</b>	<b>1,713</b>	<b>1,907</b>	<b>222</b>	<b>1,483</b>	<b>1,648</b>	<b>2</b>	<b>23,709</b>

Nutrition situation in Jalozai IDPs camp:-

Table 5: Nutrition situation in IDPs Jalozai camp Nowshera

➤ Nutrition situation data (Week 49):

CMAM Finding	No of Children screened (6-59 months)		MAM MUAC < 12.5-11.5 cm		SAM MUAC < 11.5cm		Malnutrition at Risk Borderline MUAC ≤13.5-12.5 cm		No Of PLW Screened		Malnourish PLW	
	M	F	M	F	M	F	M	F	P	L	P. MUAC<21	L. MUAC<21
Gender wise												
Number of screened	77	75	12	22	0	4	14	17	41	13	10	2
<b>Total</b>	<b>152</b>		<b>34</b>		<b>4</b>		<b>31</b>		<b>54</b>		<b>12</b>	

➤ Nutrition situation data (Consolidated):

CMAM Finding	No of Children screened (6-59 months)		MAM MUAC < 12.5-11.5 cm		SAM MUAC < 11.5cm		Malnutrition at Risk Borderline MUAC ≤13.5-12.5 cm		No Of PLW Screened		Malnourish PLW	
	M	F	M	F	M	F	M	F	P	L	P. MUAC<21	L. MUAC<21
Gender wise												
Number of screened	5,562	5,706	498	712	128	177	684	855	2,384	3,583	365	274
<b>Total</b>	<b>11,268</b>		<b>1,210</b>		<b>305</b>		<b>1,539</b>		<b>5,967</b>		<b>639</b>	

## Health Education situation in Jalozai IDPs camp:-

Table 6: Health education situation in IDP's Jalozai camp Nowshera

Data of health education situation (Week 49, 2012)					Data of health education situation (Consolidated)				
Sessions	Number of Sessions	Total participants			Sessions	Number of Sessions	Total participants		
		Males	Females	Total			Males	Females	Total
Total Sessions	710	2,643	4,532	7,175	Total Sessions	18,638	56,484	95,093	151,577

## MCH in Jalozai IDPs camp:-

Figure 5: MCH situation in IDP's Jalozai camp Nowshera (December 2 to 8, 2012)

