

Disease situation in Jalozai IDP's camp, Khyber Pakhtunkhwa Week 47 (November 18th to 24th, 2012)

Highlights:

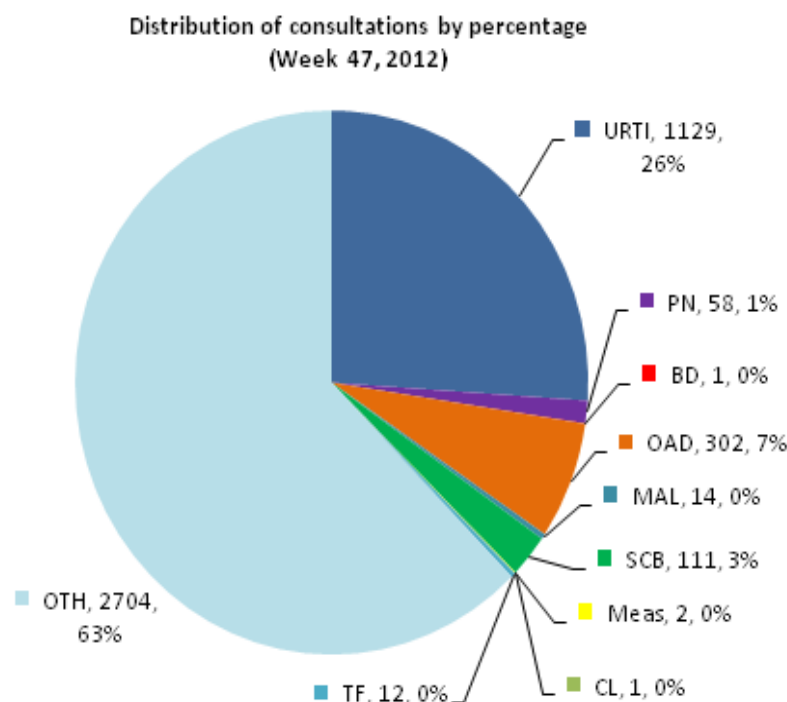
- ❖ **Acute Respiratory tract infections (ARI)** accounted for **27.4% or 1,187 cases** of the total patients (**4,334** consultations) in all age groups and is showing 0.5% increase in percentage of ARI patient visits as compared to week 46, 2012.
- ❖ **Other Acute Diarrhea (OAD)** accounted for **7% or 302 cases** of the total patient consultations in all age groups by showing 2% increase in percentage as compared to OAD patient visits in previous week.
- ❖ Confirmed **Malaria (MAL)** shared **0.3% or 14 cases** of all patient visits in current week.
- ❖ **Skin Infections (SCB)** reported as **2.6% or 111 cases** of the total patient consultations.
- ❖ Total of **3 alerts** including 2 for suspected Measles and 1 for Cutaneous Leishmaniasis (CL) were reported in this week.



Weekly disease consultations in Jalozai IDPs camp:-

Figure 1: Distribution of consultations by percentage

Table 1: Cases reported from Jalozai IDPs camp



Disease name	Week-47	
	Cases	%
Upper Respiratory Tract Infection (URTI)	1,129	26.1
Pneumonia (PN)	58	1.3
Bloody Diarrhea (BD)	1	<1
Other Acute Diarrhea (OAD)	302	7
Acute Watery Diarrhea (AWD)	-	-
Confirmed Malaria (MAL)	14	0.3
Scabies (SCB)	111	2.6
Chronic Viral Hepatitis (CVH)	-	-
Suspected Measles (Meas)	2	<1
Pyrexia Unknown Origin (PUO)	-	-
Cutaneous Leishmaniasis (CL)	1	<1
Suspected Typhoid Fever (TF)	12	0.3
Other diseases (OTH)	2,704	62.4
Total consultations	4,334	

A total **4,334** consultations have been reported through DEWS during week 47 (November 18 to 24, 2012) (table 1). **Seven (7) health static units** (Merlin International 4, CAMP Organization 2 and FATA health facility 1) from Jalozai IDPs camp shared daily/weekly disease surveillance data through DEWS.

Major causes for seeking health care percentage trend in Jalozai IDPs camp:-

Figure 2: Weekly disease percentage trend in Jalozai IDPs camp (Week 14 to 47, 2012):

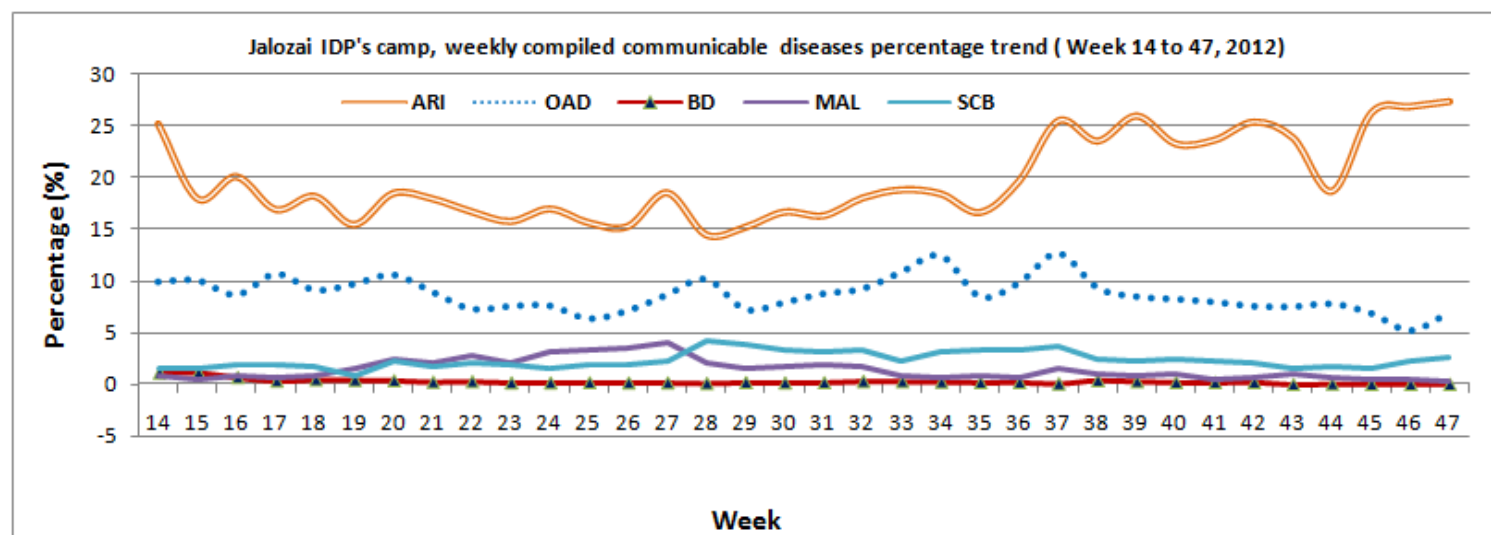


Figure 2 shows percentage trend of major communicable diseases in Jalozai IDPs camp. In this week ARI shared 27.4% or 1,187 cases is showing 0.5% increase and OAD shared 7% or 302 cases is showing 2% increase in percentage.

Total consultations reported from all health units in Jalozai IDPs camp:-

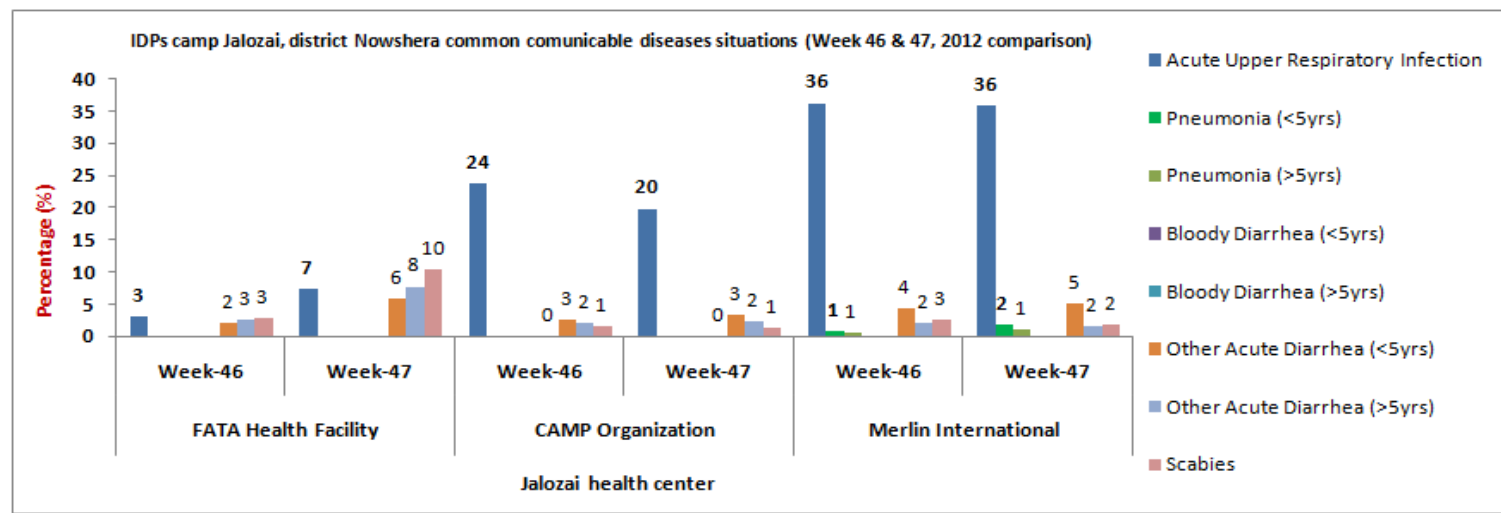
Communicable diseases ⁴	CAMP (2 units)				Merlin (4 units)				FATA Health facility (1 unit)			
	Wk-46 (Cases)	%	Wk-47 (Cases)	%	Wk-46 (Cases)	%	Wk-47 (Cases)	%	Wk-46 (Cases)	%	Wk-47 (Cases)	%
Acute Upper Respiratory Infection	431	24	346	20	847	36.2	746	36	25	3.1	37	7.3
Pneumonia (<5yrs)	-	-	-	-	16	0.7	36	1.7	-	-	-	-
Pneumonia (>5yrs)	-	-	-	-	13	0.6	22	1.1	-	-	-	-
Bloody Diarrhea (<5yrs)	-	-	-	-	-	-	-	-	-	-	-	-
Bloody Diarrhea (>5yrs)	1	0.1	1	0.1	-	-	-	-	-	-	-	-
Other Acute Diarrhea (<5yrs)	45	2.5	56	3.2	99	4.2	104	5	15	2	30	6
Other Acute Diarrhea (>5yrs)	34	2	41	2.3	45	2	32	1.5	20	2.5	39	7.7
Suspected Measles (Meas)	-	-	2	0.1	-	-	-	-	-	-	-	-
Confirmed Malaria	11	0.6	9	0.5	11	0.5	5	0.2	-	-	-	-
Cutaneous Leishmaniasis (CL)	-	-	1	0.1	-	-	-	-	-	-	-	-
Pyrexia Unknown Origin (PUO)	-	-	-	-	3	0.1	-	-	-	-	-	-
Scabies (SCB)	26	1.4	23	1.3	60	2.6	35	1.7	23	3	53	10.4
Suspected Typhoid Fever (TF)	14	0.8	10	0.6	4	0.2	2	0.1	-	-	-	-
Chronic Viral Hepatitis (CVH)	-	-	-	-	-	-	-	-	-	-	-	-
Other diseases	1,246	69	1,257	72	1,244	53	1,097	53	718	89.6	350	69
Total Consultations	1,808		1,746		2,342		2,079		801		509	

A comparison of the ARI consultations by health units in Jalozai camp on week 47 (November 18 to 24) shows that high proportion of ARI cases are reported accounted for 27.4% (URTI 26.1% and Pneumonia 1.3%), or 1,187 cases

followed by Other Acute Diarrhea 7% or 302 cases. Confirmed Malaria comprised 0.3% or 14 cases in consolidated data out of total consultations.

Disease trends by percentage in IDPs Jalozai camp:-

Figure 3: Most common communicable diseases situation in Jalozai IDPs camp as percentage of consultations (Week 46 and 47 comparison)



The above figure 3 shows major health causes percentage situation in Jalozai IDPs camp. During week 47 high percentages of ARI and OAD consultations were reported from Merlin health units as compared to CAMP health units and FATA health facility. In this week ARI 39% and OAD 6.5% were shared from Merlin health facilities, ARI 20% and OAD 5.6% were from CAMP health units, also ARI 7.3% and OAD 13.6% were from FATA health center. Total of 3 alerts including 2 for suspected Measles and 1 for Cutaneous Leishmaniasis (CL) were reported from CAMP health facilities in this week.

Distribution of consultations percentage by age and gender

Figure 4: Age and gender wise segregated disease situation in Jalozai IDPs camp, week 47

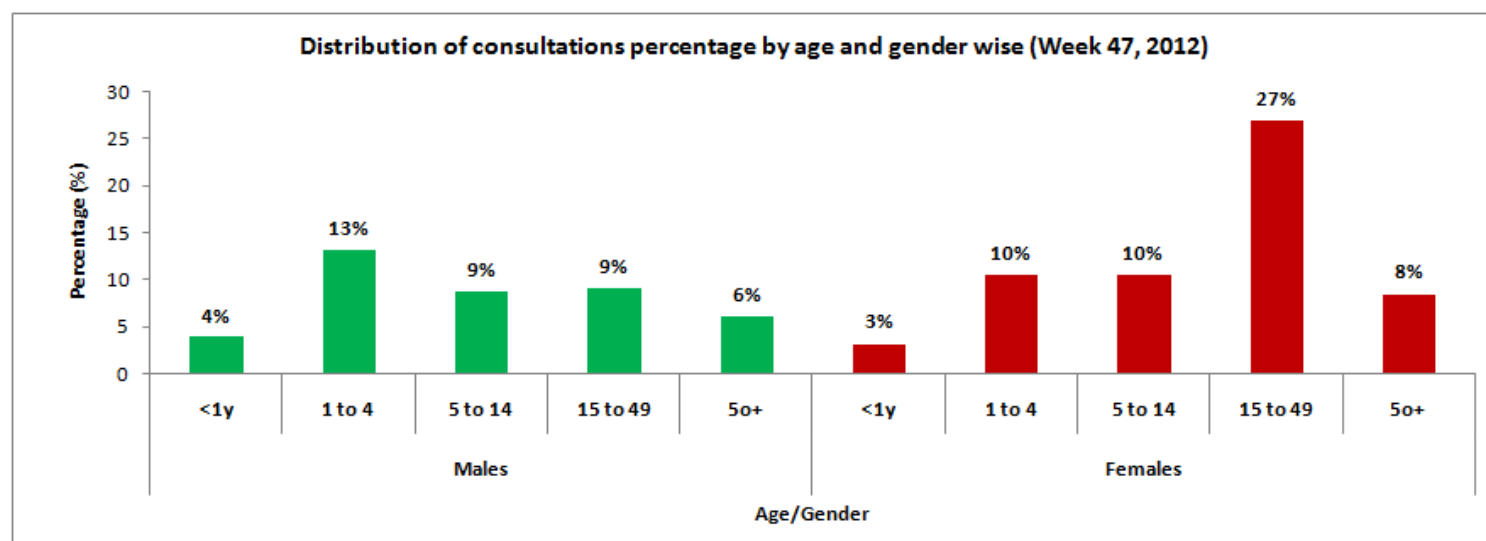


Figure 4 shows comparison of the consultations by gender and age wise in health events in over all diseases, male to female patients' ratio reported was **41% or 1,760 cases** and **59% or 2,574 cases** respectively.

Immunization in Jalozai IDPs camp:-

Table 3 (a & b): Immunization (Jalozai IDP's Camp, Nowshera) from 18th to 24th November, 2012

a) Routine vaccination of Jalozai IDPs camp (Week 47):

EPI	Routine Vaccination										OPV U5 yrs (Other than Routine)*	Women	TT1	TT2	TT3	TT4	TT5	Total
	Children	BCG	Polio			PENTA			Measles	Fully Immunized								
<1 year	Birth		1	2	3	1	2	3										
<1 year	1	18	67	71	65	67	71	65	2	63	44	Pregnant	59	52	26	0	0	2,107
>=1 year	0	0	8	10	16	8	10	16	37	8	1,251	Non-Pregnant (15-49y)	23	27	16	4	2	
Total	1	18	75	81	81	75	81	81	39	71	1,295	-	82	79	42	4	2	

b) Routine vaccination of Jalozai IDPs camp (Consolidated data of all vaccination points in Jalozai IDP camp):

EPI	Routine Vaccination										OPV U5 yrs (Other than Routine)*	Women	TT1	TT2	TT3	TT4	TT5	Total
	Children	BCG	Polio			PENTA			Measles	Fully Immunized								
<1 year	Birth		1	2	3	1	2	3										
<1 year	2,263	1,528	2,704	2,083	1,942	2,743	2,108	1,946	2,309	1,536	3,530	Pregnant	2,748	1,602	274	55	6	124,971
>=1 year	1,415	0	1,531	822	800	1,533	823	806	3,264	699	73,672	Non-Pregnant (15-49y)	7,413	1,129	1,072	515	100	
Total	3,678	1,528	4,235	2,905	2,742	4,276	2,931	2,752	5,573	2,235	77,202	-	10,161	2,731	1,346	570	106	

*OPV dosage received during OPD and not the ones in the routine

Laboratory test conducted in Jalozai IDPs camp:-

Table 4 (a & b): Laboratory test situation in IDPs Jalozai Camp, Nowshera

a) laboratory test situation data in Jalozai IDPs camp (November 18 to 24, 2012):

Test Name	MP (microscopy)	MP (RDT)*	HB%	HBS	HCV	B.GROUP	Typhoid	B.SUGAR	ESR	LEISHMANIASIS	PREGNENCIES	URINE ALBUMIN	URINE SUGAR	URINE R/E	STOOL R/E	BILIRUBIN	Syphilis	SPUTUM FOR AFB	TOTAL
+Ve	9	14	17	0	3	-	1	14	-	2	17	2	1	28	2	2	0	0	-
-Ve	36	69	38	50	47	-	5	49	-	2	14	66	67	52	4	61	42	0	-
Total	45	83	55	50	50	42	6	63	1	4	31	68	68	80	6	63	42	0	757

* Malaria slides /RDT examined report

Health Centers	Slides/RDT examined	P. Falciparum	P. Vivax	Mixed	Total +ve	Falciparum + Mixed	Slide Positivity Rate (SPR)	Falciparum Rate
Merlin	38	0	5	0	5	0.0	13.2	0.0
CAMP	45	0	9	0	9	0.0	20.0	0.0
Total	83	0	14	0	14	0.0	16.9	0.0

A total of 83 slides were examined for Malaria in this week. Out of total slides examined 14 (17%) were positive; out of which P. Falciparum 0 (0%), P. Vivax 14 (17%) and Mixed 0 (0%) were shared.

b) laboratory test situation data in Jalozai IDPs camp (Consolidated):

Test Name	MP (microscopy)	MP (RDT)*	HB% ++	HBS	HCV	B.GROUP	Typhoid	B.SUGAR	ESR	LEISHMANIASIS	PREGNENCIES	URINE ALBUMIN	URINE SUGAR	URINE R/E	STOOL R/E	BILIRUBIN	Syphilis	SPUTUM FOR AFB	TOTAL
+Ve	535	732	497	59	59	-	17	200	-	11	819	151	25	526	94	36	8	0	-
-Ve	1,066	1,491	1,688	1,841	1,791	-	96	1,582	-	68	649	1,555	1,688	1,381	128	1,447	1,640	2	-
Total	1,601	2,223	2,185	1,900	1,850	1,752	113	1,782	24	79	1,468	1,706	1,713	1,907	222	1,483	1,648	2	23,658

Nutrition situation in Jalozai IDPs camp:-

Table 5: Nutrition situation in IDPs Jalozai camp Nowshera

➤ Nutrition situation data (Week 47):

CMAM Finding	No of Children screened (6-59 months)		MAM MUAC < 12.5-11.5 cm		SAM MUAC < 11.5cm		Malnutrition at Risk Borderline MUAC ≤13.5-12.5 cm		No Of PLW Screened		Malnourish PLW	
	M	F	M	F	M	F	M	F	P	L	P. MUAC<21	L. MUAC<21
Number of screened	87	93	14	20	1	5	14	19	39	28	14	8
Total	180		34		6		33		67		22	

➤ Nutrition situation data (Consolidated):

CMAM Finding	No of Children screened (6-59 months)		MAM MUAC < 12.5-11.5 cm		SAM MUAC < 11.5cm		Malnutrition at Risk Borderline MUAC ≤13.5-12.5 cm		No Of PLW Screened		Malnourish PLW	
	M	F	M	F	M	F	M	F	P	L	P. MUAC<21	L. MUAC<21
Number of screened	5,410	5,537	474	676	128	168	661	826	2,283	3,546	339	264
Total	10,947		1,150		296		1,487		5,829		603	

Health Education situation in Jalojai IDPs camp:-

Table 6: Health education situation in IDP's Jalojai camp Nowshera

Data of health education situation (Week 47, 2012)					Data of health education situation (Consolidated)				
Sessions	Number of Sessions	Total participants			Sessions	Number of Sessions	Total participants		
		Males	Females	Total			Males	Females	Total
Total Sessions	362	1,267	2,129	3,396	Total Sessions	17,132	50,718	87,109	137,827

MCH in Jalojai IDPs camp:-

Figure 5: MCH situation in IDP's Jalojai camp Nowshera (November 18 to 24, 2012)

